

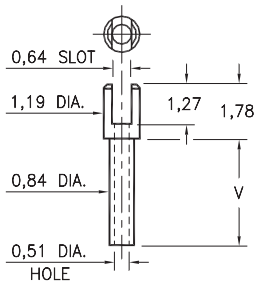
# MALE PCB PINS

## SOLDER TERMINALS SLOTTED

### 2104

2104-X-01-XX-00-00-07-0

Swage mount in 0,91 hole

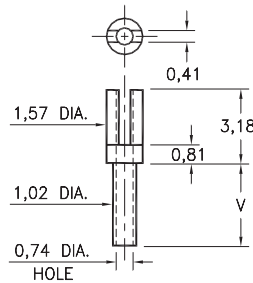


Basic Part Number	Board Thickness	Length V
2104-1	0,79	1,40
2104-2	1,57	2,18
2104-3	2,39	2,97
2104-4	3,18	3,76

### 2112

2112-X-01-XX-00-00-07-0

Swage mount in 1,09 hole

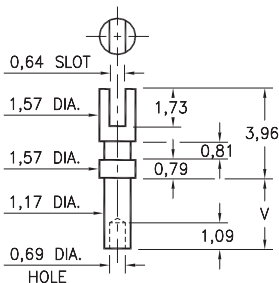


Basic Part Number	Board Thickness	Length V
2112-5	0,41	0,94
2112-1	0,79	1,35
2112-2	1,57	2,13
2112-3	2,39	2,92
2112-4	3,18	3,73

### 2105

2105-X-01-XX-00-00-07-0

Swage mount in 1,32 hole

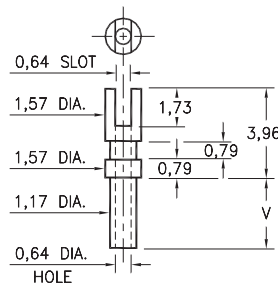


Basic Part Number	Board Thickness	Length V
2105-1	0,79	1,40
2105-2	1,57	2,18
2105-3	2,39	2,97
2105-4	3,18	3,78

### 2103

2103-X-01-XX-00-00-07-0

Swage mount in 1,32 hole

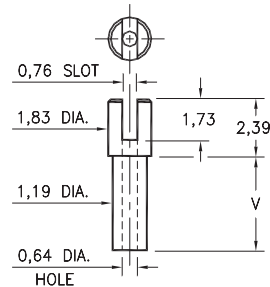


Basic Part Number	Board Thickness	Length V
2103-1	0,79	1,4
2103-2	1,57	2,18
2103-3	2,39	2,97
2103-4	3,18	3,78

### 2106

2106-X-01-XX-00-00-07-0

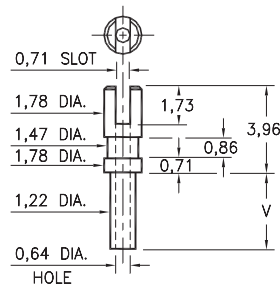
Swage mount in 1,32 hole



### 2107

2107-X-01-XX-00-00-07-0

Swage mount in 1,32 hole

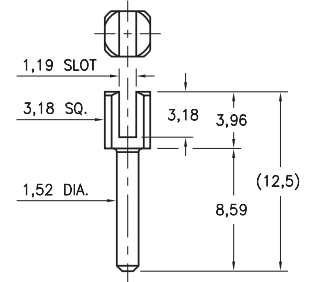


Basic Part Number	Board Thickness	Length V
210X-1	0,79	1,30
210X-2	1,57	2,08
210X-3	2,39	2,87
210X-4	3,18	3,68

### 6620

6620-0-35-XX-00-00-03-0

Solder mount in 1,63 mounting hole



#### SPECIFICATIONS:

**Pin Material:** Brass Alloy 360, 1/2 Hard  
(Swage pins are annealed)

**Dimensions:** Millimeters

**Tolerances On:** Lengths:  $\pm 0,13$   
Diameters:  $\pm 0,051$   
Angles:  $\pm 2^\circ$



ORDER CODE: **XXXX - X - 01 - XX - 00 - 00 - 07 - 0**

BASIC PART #

SPECIFY PIN FINISH:

- 01 5,08 $\mu$ m TIN/LEAD OVER NICKEL
- ◆ 80 5,08 $\mu$ m TIN OVER NICKEL (RoHS)
- ◆ 44 7,62 $\mu$ m SILVER OVER COPPER (RoHS)
- 50 7,62 $\mu$ m ELECTRO-SOLDER  
(60/40 SnPb)

