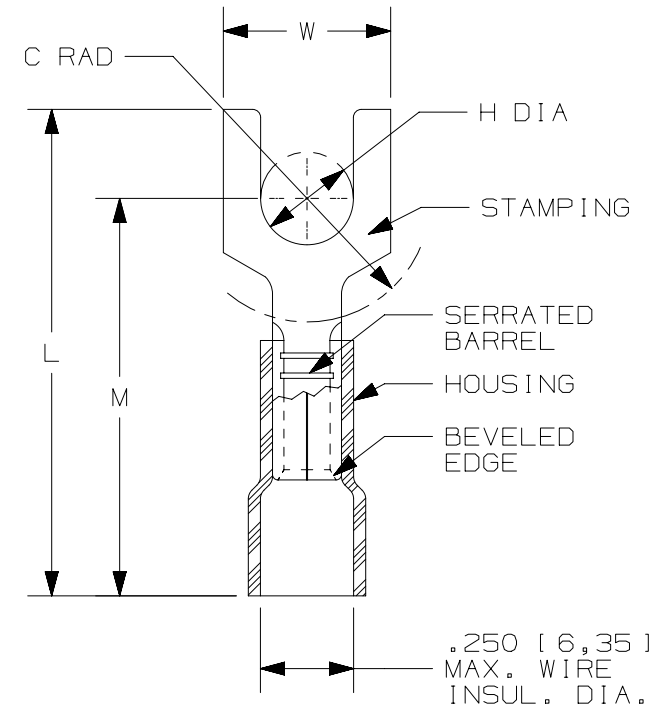


THIS COPY IS PROVIDED ON A RESTRICTED BASIS AND IS NOT TO BE USED IN ANY WAY DETRIMENTAL TO THE INTERESTS OF PANDUIT CORP.

PANDUIT PART #	STUD SIZE		DIMENSIONS in. [mm]				
	ENGLISH	METRIC	L ± .03 [0,8]	W ± .01 [0,3]	C ± .02 [0,5]	M ± .03 [0,8]	H ± .01 [0,3]
PV10-8FX	#8	M4	1.11 [28,19]	.37 [9,40]	.24 [6,10]	.88 [22,35]	.17 [4,32]
PV10-10FX	#10	M5	1.11 [28,19]	.37 [9,40]	.24 [6,10]	.88 [22,35]	.20 [5,08]
PV10-14FX	1/4"	M6	1.22 [30,99]	.50 [12,7]	.32 [8,13]	.97 [24,64]	.27 [6,86]



NOTES:

- USED FOR:
 - A. 12-10 AWG [4,0 - 6,0 mm²] SOLID OR STRANDED COPPER WIRE
 - B. 221°F [105°C] MAX. OPERATING TEMPERATURE
 - C. 600V. MAX. BLDG WIRE (1000 V. MAX. IN SIGNS, FIXTURES & LUMINAIRES)
- INSTALLATION TOOLS PANDUIT APPROVED:
 - A. UL APPROVED: CT-100, CT-600-A W/CT-550CH, CT-1550, CT-1551, CT-2500 W/CT-2550CH
- WIRE STRIP LENGTH: 5/16 ^{+1/32} [7,9 ^{+0,8}]
- MATERIAL:
 - A. STAMPING: .04" [1,02] THK COPPER, TIN PLATED
 - B. HOUSING: VINYL, YELLOW
- SEE www.panduit.com FOR PACKAGE QUANTITIES INDICATED BY PART NUMBER SUFFIX
- DIMENSIONS IN BRACKETS ARE METRIC EQUIVALENT



LISTED
587H
E52164



CERTIFIED
LR31212

TITLE		#12-10 BARREL VINYL INSULATED FORK, .250 [6,35] MAX WIRE INSUL. DIA.	
ITEM REVISION NAME		CUSTOMER DRAWING	
DATASET FILE NAME		N41259BB_08	
UNLESS OTHERWISE SPECIFIED, DIMENSIONAL TOLERANCES ARE: IN [mm]		PANDUIT TM	
.x ± .1 [2,54] .xxx ± .005 [0,127] .xx ± .01 [0,25] ANGLES ± 5°			
DRAWING NUMBER:		SEE NOTES	
DRAWN BY		DRAWING NUMBER: A41259	
DATE		THIRD ANGLE PROJECTION	
CHK		DRAWN BY DAW	
SCALE		DATE 09.13.12	
SHEET		CHK LA	
SIZE		SCALE N.T.S.	
REV		SHEET 1 OF 1	
DATE		SIZE A	
BY			
CHK			
APR			
DESCRIPTION			
ECN			

09	09.13.12	BDK	LCA	VMB	ADDED METRIC EQUIVALENT. CHANGE PACKAGING NOTE. REVISED INSTALLATION TOOLS NOTE. BROUGHT DRAWING TO CURRENT STANDARDS.	A41290
REV	DATE	BY	CHK	APR	DESCRIPTION	ECN

D10100DA/12