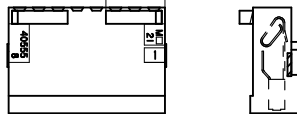


(7.62)
.300



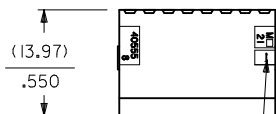
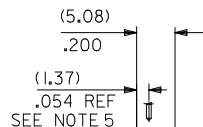
40555-AN
FEED TO WITH RAMP

(7.62)
.300

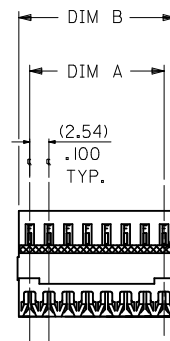
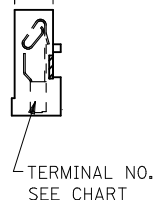


40555-BN
FEED TO WITH RAMP
AND POLARIZING RIBS

40555-N
FEED TO



CIRCUIT 1



COLOR STRIPE
SEE NOTE 6

(.13)
.005
MAX. STRAP REMAINING
AFTER CUTOFF

NOTES:

- MATERIAL: HOUSING: UNFILLED NYLON UL94V-2, MOLDED NATURAL (WHITE)
TERMINAL: SEE LEGEND
- FINISH:
 - (154) OVERALL TIN: (0.00254)/.000100 MIN. OVER NICKEL: (0.00127)/.000050 MIN.
 - (208) SELECT GOLD: (0.00038)/.000015 MIN.,
SELECT TIN: (0.00254)/.000100 MIN.,
OVERALL NICKEL UNDERPLATE: (0.00127)/.000050 MIN.
 - (228) SELECT GOLD: (0.00076)/.000030 MIN.,
SELECT TIN: (0.00254)/.000100 MIN.,
OVERALL NICKEL UNDERPLATE: (0.00127)/.000050 MIN.
 - (909) OVERALL HOT TIN DIPPED. (0.00254)/.000100 MIN.
- PRODUCT SPECIFICATION: PS-7720-001
- PACKAGING: ALL PARTS ARE TO BE BULK PACKED PER PK-40555-001 UNLESS OTHERWISE SPECIFIED IN CHART.
- FOR USE WITH (0.64)/.025 SQUARE OR ROUND PINS. INSERTION DEPTH OF (6.10/7.87)/.240/.310
- COLOR STRIPE TO RUN LENGTH OF RIB AS SHOWN.
- WIRE TERMINATION SPECIFICATION: SMES-7720-0002
- THIS PART CONFORMS TO CLASS B REQUIREMENTS OF COSMETIC SPECIFICATION PS-45499-002.

A-40555- * N * *

HOUSING OPTIONS

BLANK=40555-N
A=40555-AN
B=40555-BN

TERMINAL OPTIONS

F = 40554-F(154), BRASS
 H = 40627-H(154), BRASS
 HA = 40921-H(154), BRASS HUMPBACK
 (SEE SHEET 2)
 HB = 40554-H(154), BRASS
 FA = 40554-F(P909), BRASS
 HE = 40554-H(P909), BRASS
 HF = 41138-H(228), PHOS. BRONZE
 A = 7691-A(154), BRASS
 HG = 41138-H(208), PHOS. BRONZE
 HK = 41138-H(154), PHOS. BRONZE

NO. OF CKTS

WIRE SPECIFICATIONS (INSULATION DIA. (1.47)/.058 MAX.)

| TERMINAL OPTION | COLOR STRIPE | ACCEPTS WIRE: |
|-----------------|--------------|--|
| -A(***) | BROWN | 28 AWG. STRANDED TOPCOATED 28 AWG. STRANDED TINNED 28 AWG. SOLID TINNED 26 AWG. STRANDED TINNED 26 AWG. SOLID TINNED |
| -F(***) | NONE | 24 AWG. STRANDED TOPCOATED |
| -H(***) | GREEN | 24 AWG. STRANDED TOPCOATED 24 AWG. STRANDED TINNED 24 AWG. SOLID TINNED 26 AWG. STRANDED TOPCOATED |

| REV. | SH. | REV. | DESCRIPTION |
|------|------|------|-------------|
| 8 | BK2 | | |
| 7 | BK2 | | |
| 6 | BK2 | | |
| 3 | BK2 | | |
| 4 | BL | | |
| 3 | BL | | |
| 2 | BL | | |
| 1 | BL | | |
| SH. | REV. | BL | |

OBsolete P/Ns
 EC NO: UCP2011-1314
 DRWN:KIPPER 2011/01/04
 CHKD:JBELL
 APPR:FSM/TH 2011/03/09

QUALITY SYMBOLS
 ▽=0
 ▽=0
 ▽=0

GENERAL TOLERANCES (UNLESS SPECIFIED)

| | mm | INCH |
|----------|--------|---------|
| 4 PLACES | ± .005 | ± .0002 |
| 3 PLACES | ± .005 | ± .0002 |
| 2 PLACES | ± .005 | ± .0002 |
| 1 PLACE | ± .005 | ± .0002 |

ANGULAR ±1/2°

DRAFT WHERE APPLICABLE
MUST REMAIN WITHIN DIMENSIONS

DIMENSION STYLE
MM/IN

SCALE

DESIGN UNITS
INCH

THIRD ANGLE PROJECTION

DRAWN BY: RJG DATE: 1985/09/16
 CHECKED BY: EDGLEY DATE: 1985/09/16
 APPROVED BY: LENZ DATE: 1985/09/16

MATERIAL NO.
SEE CHART

DOCUMENT NO.
SDA-40555-*N*

SHEET NO.
1 OF 8

THIS DRAWING CONTAINS INFORMATION THAT IS PROPRIETARY TO MOLEX INCORPORATED AND SHOULD NOT BE USED WITHOUT WRITTEN PERMISSION

| NO OF CKTS | DIM A | DIM B |
|------------|------------------|------------------|
| 2 | (2.54) .100 | (5.44) .214 |
| 3 | (5.08) .200 | (7.98) .314 |
| 4 | (7.62) .300 | (10.52) .414 |
| 5 | (10.16) .400 | (13.06) .514 |
| 6 | (12.70) .500 | (15.60) .614 |
| 7 | (15.24) .600 | (18.14) .714 |
| 8 | (17.78) .700 | (20.68) .814 |
| 9 | (20.30) .800 | (23.22) .914 |
| 10 | (22.86) .900 | (25.76) 1.014 |
| 11 | (25.40) 1.000 | (28.30) 1.114 |
| 12 | (27.94) 1.100 | (30.84) 1.214 |
| 13 | (30.48) 1.200 | (33.38) 1.314 |
| 14 | (33.02) 1.300 | (35.92) 1.414 |
| 15 | (35.56) 1.400 | (38.46) 1.514 |
| 16 | (38.10) 1.500 | (41.00) 1.614 |
| 17 | (40.64) 1.600 | (43.54) 1.714 |
| 18 | (43.18) 1.700 | (46.08) 1.814 |
| 19 | (45.72) 1.800 | (48.62) 1.914 |
| 20 | (48.26) 1.900 | (51.16) 2.014 |
| 21 | (50.80) 2.000 | (53.70) 2.114 |
| 22 | (53.34) 2.100 | (56.24) 2.214 |
| 23 | (55.88) 2.200 | (58.78) 2.314 |
| 24 | (58.42) 2.300 | (61.32) 2.414 |
| 25 | (60.96) 2.400 | (63.86) 2.514 |
| 26 | (63.50) 2.500 | (66.40) 2.614 |
| 27 | (66.04) 2.600 | (68.94) 2.714 |
| 28 | (68.58) 2.700 | (71.48) 2.814 |

| 13 | 12 | 11 | 10 | 9 | 8 | 7 | 6 | 5 | 4 | 3 | 2 | 1 | |
|----|--------------|------------|---------------|----------|------------------|---|---|---|---|---|---|---|---|
| J | ENG. NO. | HOUSING NO | TERMINAL NO. | COLOR ID | EDP ON SHT./COL. | | | | | | | | J |
| | A-40555-NF | 40555-N | 40554-F(154) | NONE | 5 / 1 | | | | | | | | |
| | A-40555-ANF | 40555-AN | 40554-F(154) | NONE | 5 / 2 | | | | | | | | |
| | A-40555-BNF | 40555-BN | 40554-F(154) | NONE | 5 / 3 | | | | | | | | |
| | | | | | / | | | | | | | | |
| | | | | | / | | | | | | | | |
| I | A-40555-NH | 40555-N | 40627-H(154) | GREEN | 5 / 7 | | | | | | | | I |
| | A-40555-ANH | 40555-AN | 40627-H(154) | GREEN | 5 / 8 | | | | | | | | |
| | A-40555-BNH | 40555-BN | 40627-H(154) | GREEN | 5 / 9 | | | | | | | | |
| | | | | | / | | | | | | | | |
| | | | | | / | | | | | | | | |
| H | A-40555-NHA | 40555-N | 40921-H(154) | GREEN | 6 / 1 | | | | | | | | H |
| | A-40555-ANHA | 40555-AN | 40921-H(154) | GREEN | 6 / 2 | | | | | | | | |
| | A-40555-BNHA | 40555-BN | 40921-H(154) | GREEN | 6 / 3 | | | | | | | | |
| | | | | | / | | | | | | | | |
| | | | | | / | | | | | | | | |
| G | A-40555-NFA | 40555-N | 40554-F(P909) | NONE | 6 / 7 | | | | | | | | G |
| | A-40555-ANFA | 40555-AN | 40554-F(P909) | NONE | 6 / 8 | | | | | | | | |
| | A-40555-BNFA | 40555-BN | 40554-F(P909) | NONE | 6 / 9 | | | | | | | | |
| | | | | | / | | | | | | | | |
| | | | | | / | | | | | | | | |
| F | A-40555-NHF | 40555-N | 41138-H(228) | GREEN | 7 / 1 | | | | | | | | F |
| | A-40555-ANHF | 40555-AN | 41138-H(228) | GREEN | 7 / 2 | | | | | | | | |
| | A-40555-BNHF | 40555-BN | 41138-H(228) | GREEN | 7 / 3 | | | | | | | | |
| | | | | | / | | | | | | | | |
| | | | | | / | | | | | | | | |
| E | A-40555-NA | 40555-N | 7691-A(154) | BROWN | 7 / 1 | | | | | | | | E |
| | A-40555-ANA | 40555-AN | 7691-A(154) | BROWN | 7 / 2 | | | | | | | | |
| | A-40555-BNA | 40555-BN | 7691-A(154) | BROWN | 7 / 3 | | | | | | | | |
| | | | | | / | | | | | | | | |
| | | | | | / | | | | | | | | |
| D | A-40555-NHG | 40555-N | 41138-H(208) | GREEN | 8 / 1 | | | | | | | | D |
| | A-40555-ANHG | 40555-AN | 41138-H(208) | GREEN | 8 / 2 | | | | | | | | |
| | A-40555-BNHG | 40555-BN | 41138-H(208) | GREEN | 8 / 3 | | | | | | | | |
| | | | | | / | | | | | | | | |
| | | | | | / | | | | | | | | |
| C | A-40555-NHK | 40555-N | 41138-H(154) | GREEN | 8 / 5 | | | | | | | | C |
| | A-40555-ANHK | 40555-AN | 41138-H(154) | GREEN | 8 / 6 | | | | | | | | |
| | A-40555-BNHK | 40555-BN | 41138-H(154) | GREEN | 8 / 7 | | | | | | | | |
| B | | | | | | | | | | | | | B |
| A | | | | | | | | | | | | | A |

| | | | | | | | | | | | |
|--|---------------------|---------------------------------------|--|--|--|---|--------------|---|--|--|--|
| SEE SHEET 1 EC NO: UCP2011-1314 DRAWN:KIPPER 2011/01/04 CHKD:JBELL APPR:FSMITH 2011/03/09 | QUALITY SYMBOLS | GENERAL TOLERANCES (UNLESS SPECIFIED) | | DIMENSION STYLE | | SCALE | DESIGN UNITS | THIRD ANGLE PROJECTION | | | |
| | | | | MM/IN | | --- | INCH | | | | |
| | | | | DRAWN BY DATE | | CHECKED BY DATE | | TITLE | | | |
| | | | | SAMI EC 1991/10/29 | | EDGLEY 1991/10/29 | | INSULATION DISPLACEMENT CONNECTOR ASSEMBLY .100 CENTERS | | | |
| | | APPROVED BY DATE | | MATERIAL NO. | | DOCUMENT NO. | | SHEET NO. | | | |
| | | LENZ 1991/10/29 | | SEE CHART | | SDA-40555-*N* | | 4 OF 8 | | | |
| | | ANGULAR ±1/2° | | DRAFT WHERE APPLICABLE MUST REMAIN WITHIN DIMENSIONS | | THIS DRAWING CONTAINS INFORMATION THAT IS PROPRIETARY TO MOLEX INCORPORATED AND SHOULD NOT BE USED WITHOUT WRITTEN PERMISSION | | | | | |

| | 13 | 12 | 11 | 10 | 9 | 8 | 7 | 6 | 5 | 4 | 3 | 2 | 1 | |
|---|------------|-------------|-------------|--------------|-------------|--------------|----------|----------|----------|----------|------------|----------|------------|-------------|
| | A-40555-NF | | A-40555-ANF | | A-40555-BNF | | | | | | A-40555-NH | | | |
| J | PART NO. | ENG. NO. | PART NO. | ENG. NO. | PART NO. | ENG. NO. | PART NO. | ENG. NO. | PART NO. | ENG. NO. | PART NO. | ENG. NO. | PART NO. | ENG. NO. |
| | 22-41-8021 | A-40555-2F | OBSELETE | A-40555-A2F | 22-41-8022 | A-40555-B2F | | | | | | | 22-41-8025 | A-40555-2H |
| | 22-41-8031 | A-40555-3F | | A-40555-A3F | OBSELETE | A-40555-B3F | | | | | | | 22-41-8035 | A-40555-3H |
| | 22-41-8041 | A-40555-4F | | A-40555-A4F | OBSELETE | A-40555-B4F | | | | | | | 22-41-8045 | A-40555-4H |
| | 22-41-8051 | A-40555-5F | | A-40555-A5F | OBSELETE | A-40555-B5F | | | | | | | 22-41-8055 | A-40555-5H |
| | 22-41-8061 | A-40555-6F | | A-40555-A6F | OBSELETE | A-40555-B6F | | | | | | | 22-41-8065 | A-40555-6H |
| I | 22-41-8071 | A-40555-7F | | A-40555-A7F | 22-41-8072 | A-40555-B7F | | | | | | | 22-41-8075 | A-40555-7H |
| | 22-41-8081 | A-40555-8F | | A-40555-A8F | 22-41-8082 | A-40555-B8F | | | | | | | 22-41-8085 | A-40555-8H |
| | 22-41-8091 | A-40555-9F | | A-40555-A9F | 22-41-8092 | A-40555-B9F | | | | | | | 22-41-8095 | A-40555-9H |
| | 22-41-8101 | A-40555-10F | | A-40555-A10F | OBSELETE | A-40555-B10F | | | | | | | 22-41-8105 | A-40555-10H |
| | 22-41-8111 | A-40555-11F | | A-40555-A11F | OBSELETE | A-40555-B11F | | | | | | | 22-41-8115 | A-40555-11H |
| | 22-41-8121 | A-40555-12F | | A-40555-A12F | 22-41-8122 | A-40555-B12F | | | | | | | 22-41-8125 | A-40555-12H |
| | | A-40555-13F | | A-40555-A13F | 22-41-8132 | A-40555-B13F | | | | | | | 22-41-8135 | A-40555-13H |
| H | | A-40555-14F | | A-40555-A14F | 22-41-8142 | A-40555-B14F | | | | | | | 22-41-8145 | A-40555-14H |
| | OBSELETE | A-40555-15F | | A-40555-A15F | OBSELETE | A-40555-B15F | | | | | | | OBSELETE | A-40555-15H |
| | | A-40555-16F | | A-40555-A16F | 22-41-8162 | A-40555-B16F | | | | | | | 22-41-8165 | A-40555-16H |
| | | A-40555-17F | | A-40555-A17F | | A-40555-B17F | | | | | | | 22-41-8175 | A-40555-17H |
| | | A-40555-18F | | A-40555-A18F | | A-40555-B18F | | | | | | | 22-41-8185 | A-40555-18H |
| | | A-40555-19F | | A-40555-A19F | | A-40555-B19F | | | | | | | 22-41-8195 | A-40555-19H |
| | | A-40555-20F | | A-40555-A20F | | A-40555-B20F | | | | | | | 22-41-8205 | A-40555-20H |
| G | | A-40555-21F | | A-40555-A21F | | A-40555-B21F | | | | | | | 22-41-8215 | A-40555-21H |
| | | A-40555-22F | | A-40555-A22F | | A-40555-B22F | | | | | | | 22-41-8225 | A-40555-22H |
| | | A-40555-23F | | A-40555-A23F | | A-40555-B23F | | | | | | | 22-41-8235 | A-40555-23H |
| | | A-40555-24F | | A-40555-A24F | | A-40555-B24F | | | | | | | 22-41-8245 | A-40555-24H |
| | | A-40555-25F | | A-40555-A25F | | A-40555-B25F | | | | | | | 22-41-8255 | A-40555-25H |
| | | A-40555-26F | | A-40555-A26F | | A-40555-B26F | | | | | | | 22-41-8265 | A-40555-26H |
| F | | A-40555-27F | | A-40555-A27F | | A-40555-B27F | | | | | | | 22-41-8275 | A-40555-27H |
| | | A-40555-28F | | A-40555-A28F | | A-40555-B28F | | | | | | | 22-41-8285 | A-40555-28H |

| | A-40555-ANH | | A-40555-BNH | | | |
|---|-------------|--------------|-------------|--------------|----------|----------|
| | PART NO. | ENG. NO. | PART NO. | ENG. NO. | PART NO. | ENG. NO. |
| E | OBSELETE | A-40555-A2H | | A-40555-B2H | | |
| | 22-41-8039 | A-40555-A3H | OBSELETE | A-40555-B3H | | |
| | 22-41-8049 | A-40555-A4H | OBSELETE | A-40555-B4H | | |
| | 22-41-8059 | A-40555-A5H | OBSELETE | A-40555-B5H | | |
| | 22-41-8069 | A-40555-A6H | OBSELETE | A-40555-B6H | | |
| D | 22-41-8079 | A-40555-A7H | | A-40555-B7H | | |
| | 22-41-8089 | A-40555-A8H | | A-40555-B8H | | |
| | 22-41-8099 | A-40555-A9H | | A-40555-B9H | | |
| | 22-41-8109 | A-40555-A10H | OBSELETE | A-40555-B10H | | |
| | 22-41-8119 | A-40555-A11H | OBSELETE | A-40555-B11H | | |
| | 22-41-8129 | A-40555-A12H | | A-40555-B12H | | |
| | | A-40555-A13H | | A-40555-B13H | | |
| C | 22-41-8149 | A-40555-A14H | | A-40555-B14H | | |
| | | A-40555-A15H | OBSELETE | A-40555-B15H | | |
| | | A-40555-A16H | | A-40555-B16H | | |
| | | A-40555-A17H | | A-40555-B17H | | |
| | | A-40555-A18H | | A-40555-B18H | | |
| | | A-40555-A19H | | A-40555-B19H | | |
| | | A-40555-A20H | | A-40555-B20H | | |
| B | | A-40555-A21H | | A-40555-B21H | | |
| | 22-41-8229 | A-40555-A22H | | A-40555-B22H | | |
| | | A-40555-A23H | | A-40555-B23H | | |
| | | A-40555-A24H | | A-40555-B24H | | |
| | | A-40555-A25H | | A-40555-B25H | | |
| | | A-40555-A26H | | A-40555-B26H | | |
| | | A-40555-A27H | | A-40555-B27H | | |
| A | | A-40555-A28H | | A-40555-B28H | | |

| | | | | | | | | | | |
|---|---------------------|---------------------------------------|--|--------------------------|--------------------|---|----------------------|------------------------|--|--|
| SEE SHEET 1 EC NO: UCP2010-0587 DRAWN:TBENES 2009/10/23 CHKD:MKIPPER 2009/11/11 APPR:FSMLTH 2009/11/11 | QUALITY SYMBOLS | GENERAL TOLERANCES (UNLESS SPECIFIED) | | DIMENSION STYLE MM/IN | | SCALE --- | DESIGN UNITS INCH | THIRD ANGLE PROJECTION | | |
| | | | | DRAWN BY SAMI EC | DATE 1991/10/30 | TITLE INSULATION DISPLACEMENT CONNECTOR ASSEMBLY .100 CENTERS | | | | |
| | | | | CHECKED BY EDGLEY | DATE 1991/10/30 | MATERIAL NO. LENZ | | | | |
| | | | | APPROVED BY LENZ | DATE 1991/10/30 | DOCUMENT NO. SDA-40555-*N* | | | | |
| DRAFT WHERE APPLICABLE MUST REMAIN WITHIN DIMENSIONS | | SEE CHART | | SHEET NO. 5 OF 8 | | THIS DRAWING CONTAINS INFORMATION THAT IS PROPRIETARY TO MOLEX INCORPORATED AND SHOULD NOT BE USED WITHOUT WRITTEN PERMISSION | | | | |