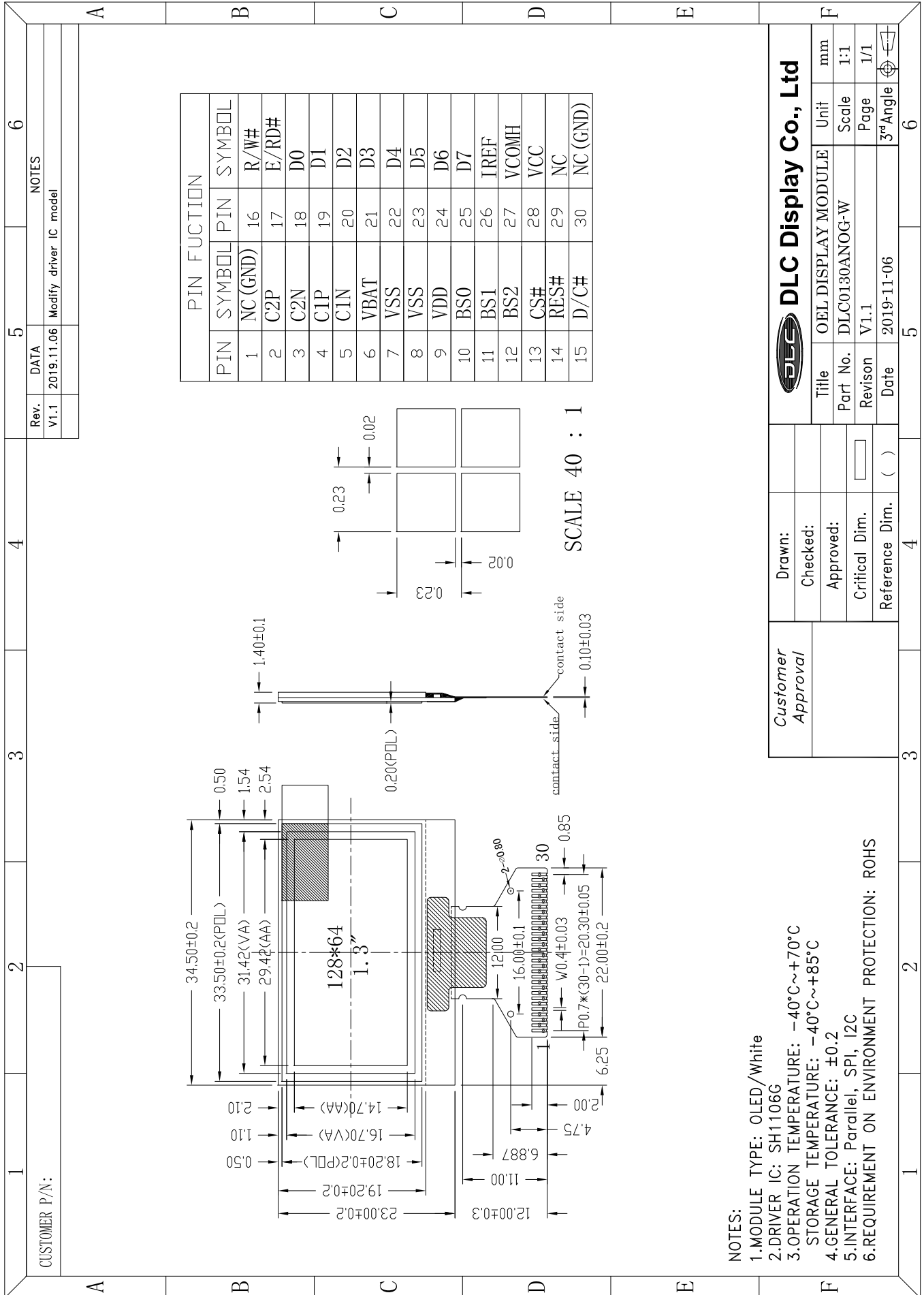


Outline Drawing



NOTES:

1. MODULE TYPE: OLED/White
2. DRIVER IC: SH1106G
3. OPERATION TEMPERATURE: -40°C~+70°C
4. STORAGE TEMPERATURE: -40°C~+85°C
5. GENERAL TOLERANCE: ±0.2
6. INTERFACE: Parallel, SPI, I2C
7. REQUIREMENT ON ENVIRONMENT PROTECTION: ROHS

Customer Approval	Drawn:				
	Checked:				
	Approved:				
	Critical Dim.				
	Reference Dim.	( )			
<b>DLC Display Co., Ltd</b>		Title	OEL DISPLAY MODULE	Unit	mm
		Part No.	DLC0130ANOG-W	Scale	1:1
		Revision	V1.1	Page	1/1
		Date	2019-11-06	3 <sup>rd</sup> Angle	