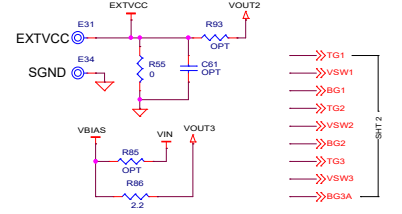
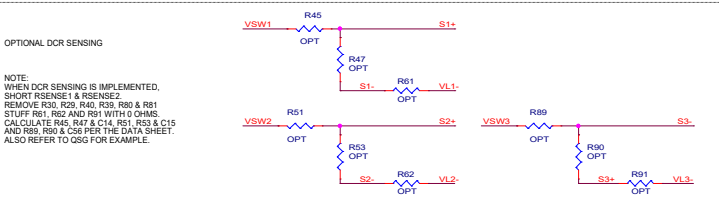
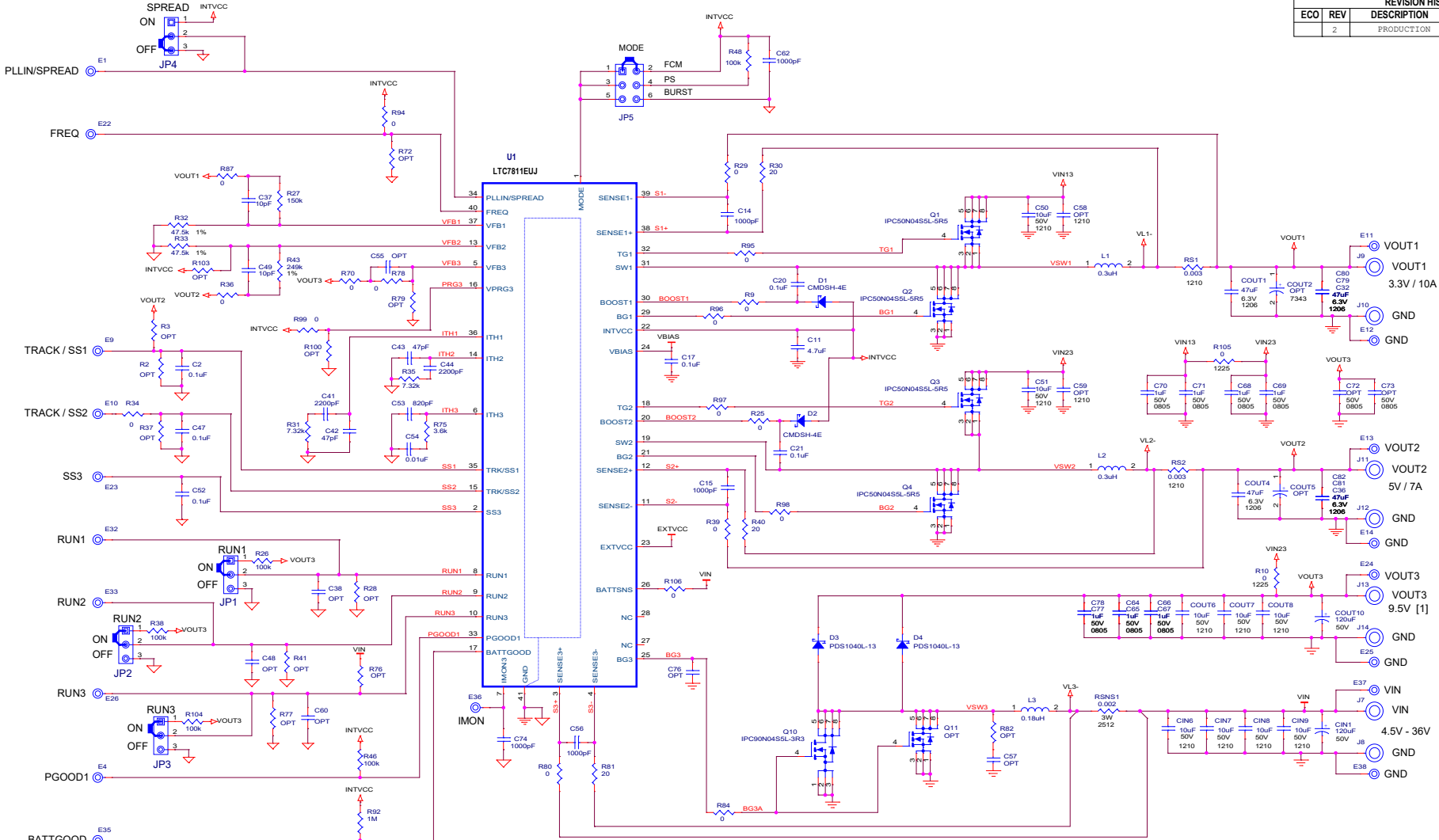
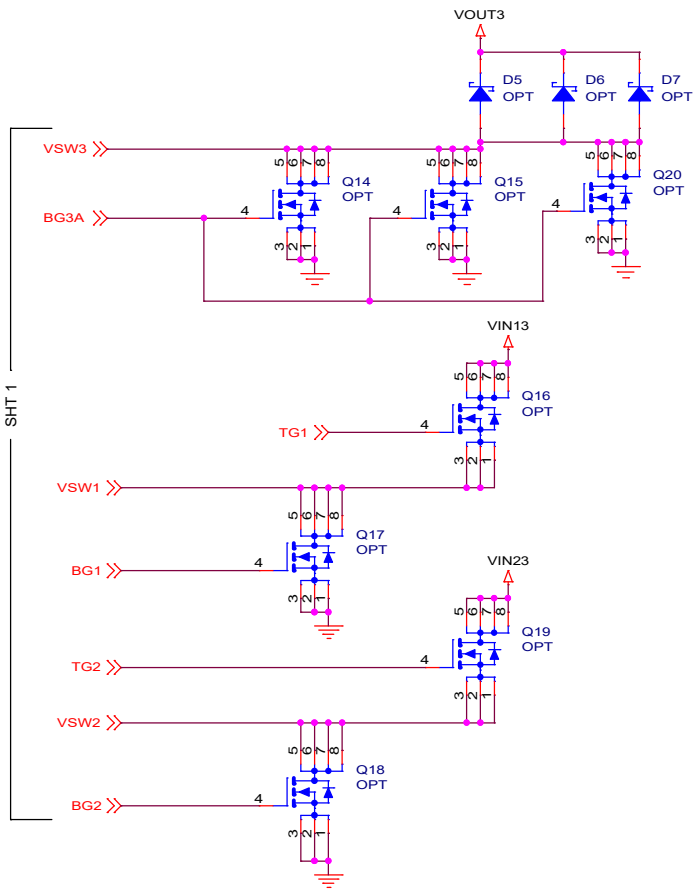


REVISION HISTORY				
ECO	REV	DESCRIPTION	APPROVED	DATE
2		PRODUCTION	JL	11-16-20



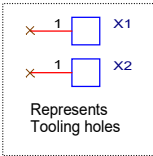
[1] OUTPUT 9.5V ONLY WHEN VIN < 9.5V, OTHERWISE VOUT3 FOLLOWS VIN.

CUSTOMER NOTICE		APPROVALS		 2555 AUGUSTINE DRIVE SANTA CLARA, CA 95054 www.analog.com
ANALOG DEVICES HAS MADE A BEST EFFORT TO DESIGN A CIRCUIT THAT MEETS CUSTOMER-SUPPLIED SPECIFICATIONS; HOWEVER, IT REMAINS THE CUSTOMER'S RESPONSIBILITY TO VERIFY PROPER MEASUREMENT OPERATIONS IN THE ACTUAL APPLICATION. COMPONENT SUBSTITUTION AND POWERED CIRCUIT BOARD LAYOUT MAY SIGNIFICANTLY AFFECT CIRCUIT PERFORMANCE OR RELIABILITY. CONTACT ANALOG DEVICES APPLICATIONS ENGINEERING FOR ASSISTANCE.		PCB DES.	LT	
		APP ENG.	LMG.J	
TITLE: SCHEMATIC LOW IQ HIGH FREQUENCY STEP-UP AND DUAL SYNCHRONOUS STEP-DOWN SUPPLIES				
IC NO. LTC7811-EUJ		SCHEMATIC NO. AND REVISION:		
SKU NO. DC3151A		710-DC3151A_REV02		
SIZE: N/A	DATE: Monday, November 16, 2020	SHEET 1 OF 2		



PCA ADDITIONAL PARTS

MP1	STANDOFF,NYLON,SNAP-ON,0.50"
MP2	STANDOFF,NYLON,SNAP-ON,0.50"
MP3	STANDOFF,NYLON,SNAP-ON,0.50"
MP4	STANDOFF,NYLON,SNAP-ON,0.50"
LB1	BOARD S/N LABEL
STNCL1	TOOL, STENCIL, 700-DC3151A REV02
PCB1	PCB, DC3151A REV02



<p>CUSTOMER NOTICE</p> <p>ANALOG DEVICES HAS MADE A BEST EFFORT TO DESIGN A CIRCUIT THAT MEETS CUSTOMER-SUPPLIED SPECIFICATIONS; HOWEVER, IT REMAINS THE CUSTOMER'S RESPONSIBILITY TO VERIFY PROPER AND RELIABLE OPERATION IN THE ACTUAL APPLICATION. COMPONENT SUBSTITUTION AND PRINTED CIRCUIT BOARD LAYOUT MAY SIGNIFICANTLY AFFECT CIRCUIT PERFORMANCE OR RELIABILITY. CONTACT ANALOG DEVICES APPLICATIONS ENGINEERING FOR ASSISTANCE.</p>	<p>APPROVALS</p>		<p>ANALOG DEVICES AHEAD OF WHAT'S POSSIBLE™</p>	<p>2555 AUGUSTINE DRIVE SANTA CLARA, CA 95054 www.analog.com</p>
	<p>PCB DES. LT</p> <p>APP ENG. LING J.</p>	<p>TITLE: SCHEMATIC</p> <p>LOW IQ HIGH FREQUENCY STEP-UP AND DUAL SYNCHRONOUS STEP-DOWN SUPPLIES</p>		
<p>THIS CIRCUIT IS PROPRIETARY TO ANALOG DEVICES AND SUPPLIED FOR USE WITH ANALOG DEVICES PARTS.</p>	<p>IC NO. LTC7811-EUJ</p> <p>SKU NO. DC3151A</p>		<p>SCHEMATIC NO. AND REVISION: 710-DC3151A_REV02</p>	
	<p>SIZE: N/A</p>	<p>DATE: Monday, November 16, 2020</p>	<p>SHEET 2 OF 2</p>	