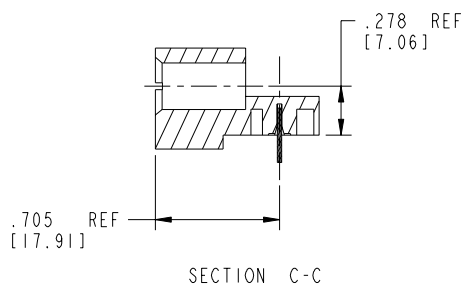
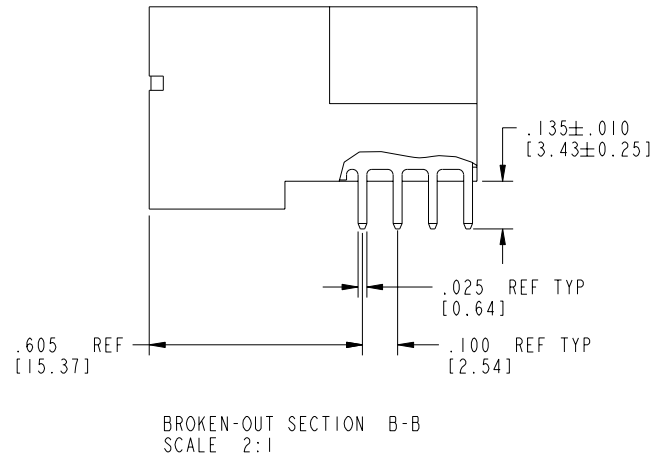
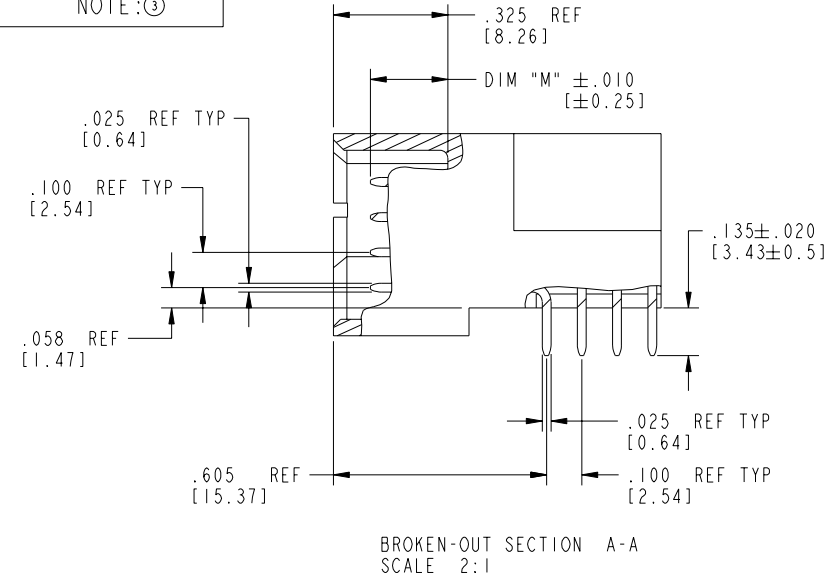


Tous droits strictement réservés. Reproduction ou communication a des tiers interdite sous quelque forme que ce soit sans autorisation écrite du propriétaire. Propriété de c FCI. Droits de reproduction FCI.

All rights strictly reserved. Reproduction or issue to third parties in any form whatever is not permitted without written authority from the proprietor. Property of FCI. Copyright FCI.

PRODUCT NUMBER
51730-031--
NOTE:③



| | | | | | | | | | |
|-------------|----------------|------------|------|---------------------------------------|------------------------|----------|--|------------------------|---------------------------|
| mat'l code | | SEE NOTE 2 | | tolerances unless otherwise specified | | CUSTOMER | | www.fciconnect.com | |
| ltr | ecn no. | dr | date | linear | .XX±.01/0.X±0.3 | COPY | | projection | title |
| D | | | | angles | .XXX±.005/0.XX±0.13 | | | | IP + 24S + IP |
| | | | | dr | .XXX±.0020/0.XXX±0.051 | INCH/MM | | product family | RIGHT ANGLE SOLDER HEADER |
| | | | | enr | 0°±2° | scale | | PwrBlade | code |
| | | | | chr | C. DAILY 09/10/02 | 1:1 | | size | 213 |
| | | | | appd | M. MOSTOLLER 09/10/02 | | | dwg no | sheet |
| | | | | | M. MOSTOLLER 09/10/02 | | | A | 2 of 4 |
| sheet index | revision sheet | | | | | | | | |

cage code 22526

Pro/E

PDM: Rev:D

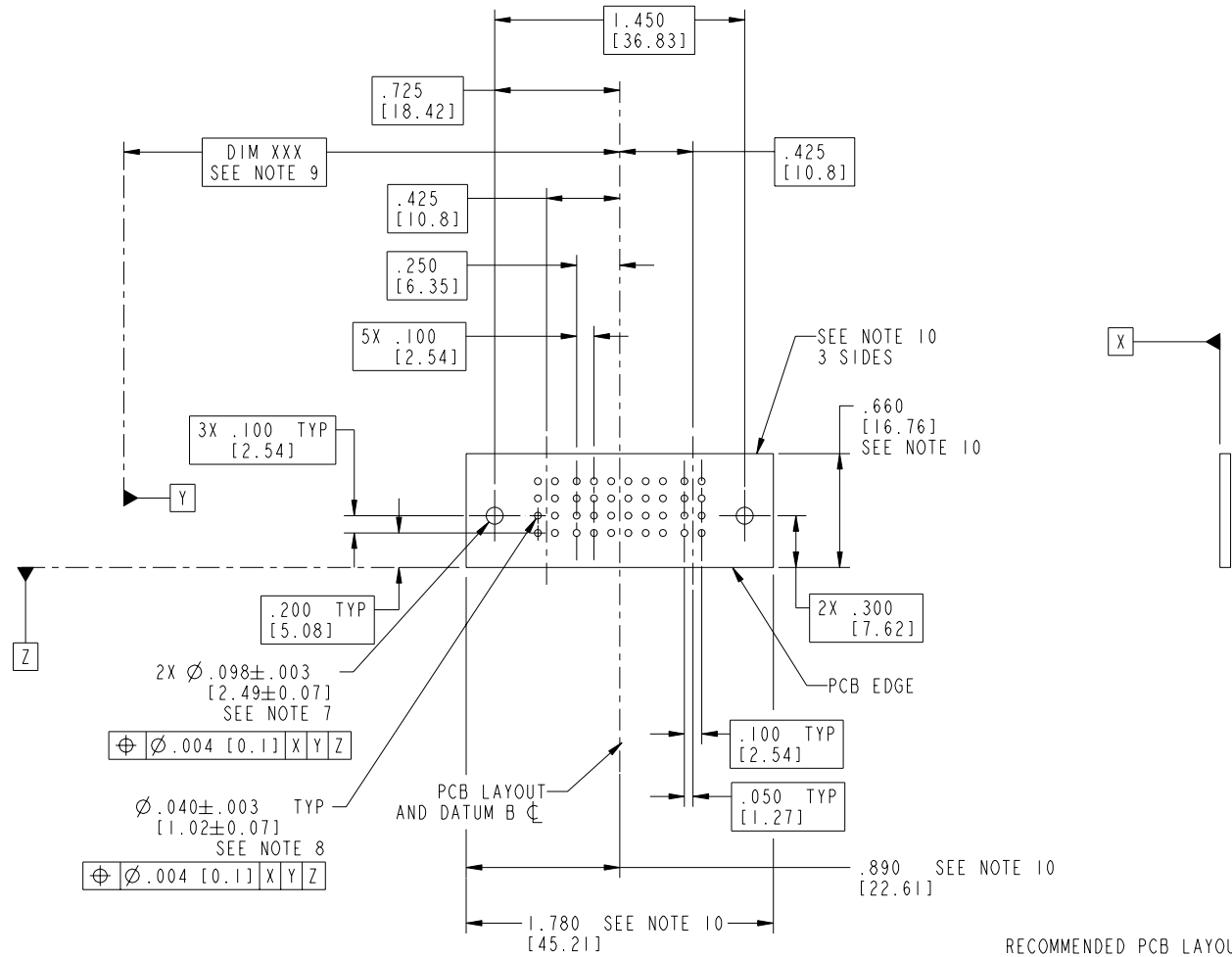
STATUS Released

Printed: Oct 08, 2006

Tous droits strictement réservés. Reproduction ou communication a des tiers interdite sous quelque forme que ce soit sans autorisation écrite du propriétaire. Propriété de c FCI. Droits de reproduction FCI.

All rights strictly reserved. Reproduction or issue to third parties in any form whatever is not permitted without written authority from the proprietor. Property of FCI. Copyright FCI.

PRODUCT NUMBER
51730-031__
NOTE: ③



RECOMMENDED PCB LAYOUT

| | | | | | | | | | |
|-------------|----------------|------------|------|---------------------------------------|------------------------|----------|--|------------------------|---------------------------|
| mat'l code | | SEE NOTE 2 | | tolerances unless otherwise specified | | CUSTOMER | | www.fciconnect.com | |
| ltr | ecn no. | dr | date | linear | .XX±.01/0.X±0.3 | COPY | | projection | title |
| D | | | | | .XXX±.005/0.XX±0.13 | | | | IP + 24S + IP |
| | | | | angles | .XXX±.0020/0.XXX±0.051 | | | | RIGHT ANGLE SOLDER HEADER |
| | | | | dr | 0° ± 2° | | | | product family |
| | | | | enrg | C. DAILY 09/10/02 | | | scale | PwrBlade |
| | | | | chr | M. MOSTOLLER 09/10/02 | | | size | code |
| | | | | appd | M. MOSTOLLER 09/10/02 | | | A | 213 |
| sheet index | revision sheet | | | | | | | 51730-031 | 3 of 4 |

cage code 22526

Pro/E

PDM: Rev:D

STATUS Released

Printed: Oct 08, 2006

Tous droits strictement réservés. Reproduction ou communication a des tiers interdite sous quelque forme que ce soit sans autorisation écrite du propriétaire. Propriété de c FCI. Droits de reproduction FCI.

All rights strictly reserved. Reproduction or issue to third parties in any form whatever is not permitted without written authority from the proprietor. Property of FCI. Copyright FCI.

PRODUCT NUMBER
51730-031__
NOTE:③

NOTES:

1. DIMENSIONS AND TOLERANCES ARE IN ACCORDANCE WITH ASME Y14.5M, 1994 UNLESS OTHERWISE SPECIFIED.

CONNECTOR NOTES:

② HOUSING MATERIAL: UL 94 V-0 GLASS FILLED HIGH-TEMP THERMOPLASTIC
POWER CONTACT MATERIAL: COPPER ALLOY
SIGNAL PIN MATERIAL: COPPER ALLOY

3. PLATING:

51730-031,51730-031LF,PLATING SPEC SEE PRINT:100064183.

④ MANUFACTURER'S NAME, P/N, AND DATE CODE TO APPEAR ON THIS SURFACE.

5. PRODUCT SPECIFICATION GS-12-149.
APPLICATION SPECIFICATION BUS-20-067.


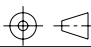

PCB NOTES:

6. ALL HOLE DIAMETERS ARE FINISHED HOLE SIZE.
7. MOUNTING HOLES, WHERE APPLICABLE, ARE UNPLATED.

⑧ $\varnothing .0453 \pm .0010$ [1.151 \pm 0.025] DRILLED HOLES PLATED WITH .0003 [0.008] MIN SnPb OVER .001 [0.03] TO .003 [0.08] Cu PLATING TO ACHIEVE $\varnothing .040 \pm .003$ [1.02 \pm .07] HOLE.

⑨ "DIM XXX" TO BE DETERMINED BY THE CUSTOMER.

⑩ CONNECTOR KEEP-OUT ZONE.

| | | | | | | | | | | | |
|-------------|---------|----------------|------|------------|------------------------|---------------------------------------|--|---|--|---|--|
| mat'l code | | | | SEE NOTE 2 | | tolerances unless otherwise specified | | CUSTOMER | |  www.fciconnect.com | |
| ltr | ecn no. | dr | date | linear | .XX±.01/0.XX±0.3 | COPY | | projection | | title | |
| D | | | | | .XXX±.005/0.XX±0.13 | | |  | | IP + 24S + IP | |
| | | | | angles | XXXX±.0020/0.XXX±0.051 | | |  | | RIGHT ANGLE SOLDER HEADER | |
| | | | | dr | 0°±2° | C. DAILY 09/10/02 | | INCH/MM | | product family | |
| | | | | enrg | | M. MOSTOLLER 09/10/02 | | 1:1 | | PwrBlade | |
| | | | | chr | | M. MOSTOLLER 09/10/02 | | A | | code | |
| | | | | appd | | M. MOSTOLLER 09/10/02 | | size | | 213 | |
| sheet index | | revision sheet | | | | | | scale | | sheet | |
| | | | | | | | | A | | 4 of 4 | |
| | | | | | | | | 51730-031 | | | |

cage code 22526 4