

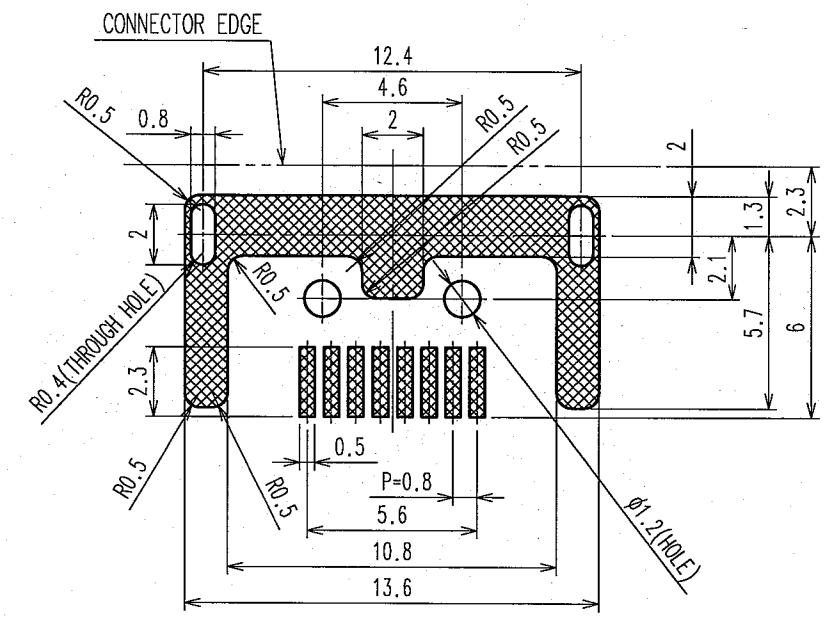
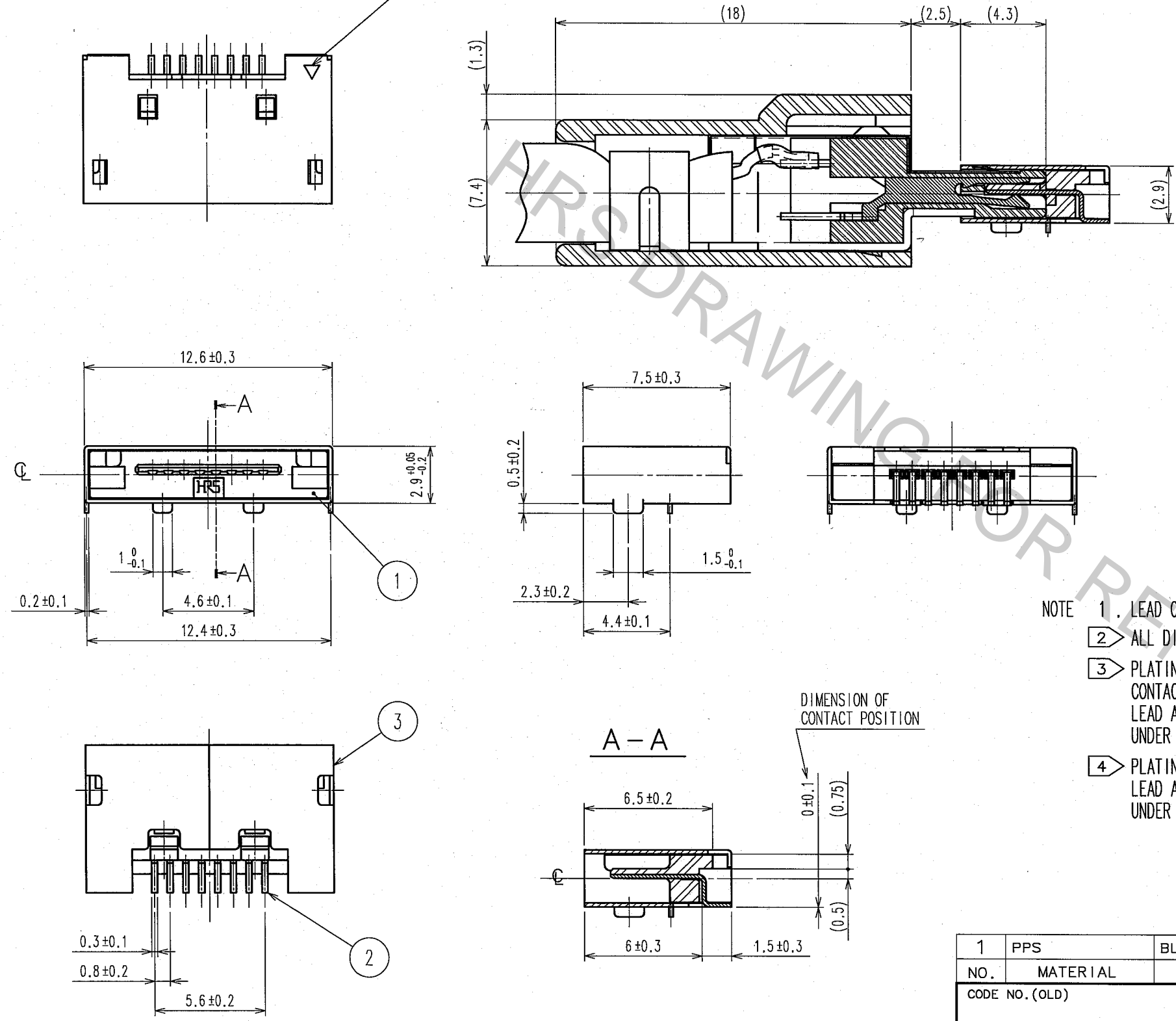
Apr.1.2017 Copyright 2017 HIROSE ELECTRIC CO., LTD. All Rights Reserved.

COUNT	DESCRIPTION OF REVISIONS	BY	CHKD	DATE	COUNT	DESCRIPTION OF REVISIONS	BY	CHKD	DATE

POLARIZING MARK  
▽ MARK SHALL BE  
PROCESSED BY  
CHAMFERING

MATED(4:1)

2 RECOMMENDED PC BOARD PATTERN  
(MOUNTING SIDE)



- NOTE
- 1. LEAD CO-PLANARITY TO BE 0.1 MAX.
  - 2. ALL DIMENSIONS WITHOUT TOLERANCE ARE DIMENSIONS FOR REFERENCE.
  - 3. PLATING  
CONTACT AREA : GOLD 0.2μ m min.  
LEAD AREA : GOLD 0.03μ m min.  
UNDER PLATING : NICKEL 2μ m min.
  - 4. PLATING  
LEAD AREA : GOLD 0.03μ m min.  
UNDER PLATING : NICKEL 0.2μ m min.

1	PPS	BLACK, UL94V-0	3	STAINLESS STEEL	4
2	PHOSPHOR BRONZE		3		
NO. MATERIAL FINISH, REMARKS		NO. MATERIAL FINISH, REMARKS			
CODE NO. (OLD)		DRAWN	DESIGNED	CHECKED	APPROVED
		H. Kikuchi	H. Kikuchi	N. Miyazaki	[Signature]
		06.10.03	06.10.03	06.10.03	06.10.03
DRAWING NO.		PART NO.			
EDC3-045930-02		3260-8S1(55)			
SCALE		CODE NO.			
4 : 1		CL232-0002-7-55			
UNITS		HIROSE ELECTRIC CO., LTD			
mm					

TO