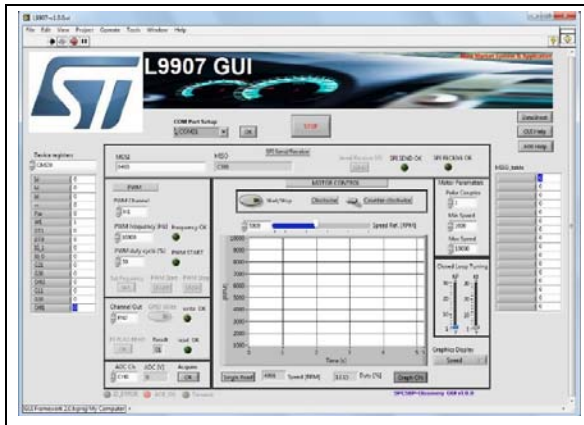


Graphical User Interface (GUI) for EVAL-L9907 evaluation board

Data brief



Description

The STSW-L9907 is the Graphical User Interface (GUI) dedicated to set and control the EVAL-L9907 board (BLDC Motor Driver application boards for L9907) through the SPI protocol, EN, PWM and 6-Step Motor Control.

The STSW-L9907 has been developed by using Labview® and it works with SPC560P-DISP evaluation board programmed with a dedicated Firmware.

Table 1. Device summary

Order codes	Reference
STSW-L9907	STSW-L9907 GUI for EVAL-L9907

Features

- Complete Graphical User Interface (GUI) for EVAL-L9907 evaluation board.

1 Revision history

Table 2. Document revision history

Date	Revision	Changes
18-Oct-2016	1	Initial release.

IMPORTANT NOTICE – PLEASE READ CAREFULLY

STMicroelectronics NV and its subsidiaries ("ST") reserve the right to make changes, corrections, enhancements, modifications, and improvements to ST products and/or to this document at any time without notice. Purchasers should obtain the latest relevant information on ST products before placing orders. ST products are sold pursuant to ST's terms and conditions of sale in place at the time of order acknowledgement.

Purchasers are solely responsible for the choice, selection, and use of ST products and ST assumes no liability for application assistance or the design of Purchasers' products.

No license, express or implied, to any intellectual property right is granted by ST herein.

Resale of ST products with provisions different from the information set forth herein shall void any warranty granted by ST for such product.

ST and the ST logo are trademarks of ST. All other product or service names are the property of their respective owners.

Information in this document supersedes and replaces information previously supplied in any prior versions of this document.

© 2016 STMicroelectronics – All rights reserved

