



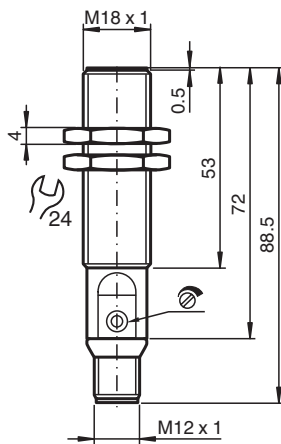
# Capacitive sensor

## CBB8-18GS75-E2-V1

- 8 mm flush
- The switching distance can be set over a wide range with the potentiometer



### Dimensions



### Technical Data

#### General specifications

Switching function		Normally open (NO)
Output type		PNP
Rated operating distance	$s_n$	1 ... 8 mm
Installation		flush
Output polarity		DC

#### Nominal ratings

Operating voltage	$U_B$	10 ... 30 V
Switching frequency	$f$	0 ... 100 Hz
Reverse polarity protection		reverse polarity protected
Short-circuit protection		pulsing
Voltage drop	$U_d$	$\leq 1.5$ V
Temperature drift		max. 20 % at -5 ... 55 °C (23 ... 131 °F)
Operating current	$I_L$	0 ... 100 mA
No-load supply current	$I_0$	$\leq 18$ mA
Time delay before availability	$t_v$	max. 300 ms

#### Indicators/operating means

Release date: 2020-09-02 Date of issue: 2020-09-03 Filename: 237038\_eng.pdf

Refer to "General Notes Relating to Pepperl+Fuchs Product Information".

Pepperl+Fuchs Group  
www.pepperl-fuchs.com

USA: +1 330 486 0001  
fa-info@us.pepperl-fuchs.com

Germany: +49 621 776 1111  
fa-info@de.pepperl-fuchs.com

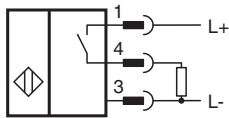
Singapore: +65 6779 9091  
fa-info@sg.pepperl-fuchs.com

**PF** PEPPERL+FUCHS

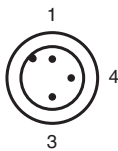
## Technical Data

LED green	Operating display
LED yellow	indication switching state
Potentiometer	sensitivity adjustment
<b>Compliance with standards and directives</b>	
Standard conformity	
Standards	EN 60947-5-2:2007 IEC 60947-5-2:2007
<b>Approvals and certificates</b>	
UL approval	cULus Listed, General Purpose
CCC approval	CCC approval / marking not required for products rated ≤36 V
<b>Ambient conditions</b>	
Ambient temperature	-25 ... 85 °C (-13 ... 185 °F)
<b>Mechanical specifications</b>	
Connection type	Connector M12 x 1 , 3-pin
Housing material	Stainless steel 1.4305 / AISI 303
Sensing face	PBT
Degree of protection	IP67

## Connection





## Connection Assignment




Wire colors in accordance with EN 60947-5-2

1	BN	(brown)
3	BU	(blue)
4	BK	(black)

## Accessories

	<b>BF 18</b>	Mounting flange, 18 mm
	<b>V1-W-2M-PUR</b>	Female cordset, M12, 4-pin, PUR cable

**Accessories**

	<p><b>V1-G-2M-PUR</b></p>	<p>Female cordset, M12, 4-pin, PUR cable</p>
---	---------------------------	--

Release date: 2020-09-02 Date of issue: 2020-09-03 Filename: 237038\_eng.pdf

Refer to "General Notes Relating to Pepperl+Fuchs Product Information".

Pepperl+Fuchs Group  
www.pepperl-fuchs.com

USA: +1 330 486 0001  
fa-info@us.pepperl-fuchs.com

Germany: +49 621 776 1111  
fa-info@de.pepperl-fuchs.com

Singapore: +65 6779 9091  
fa-info@sg.pepperl-fuchs.com