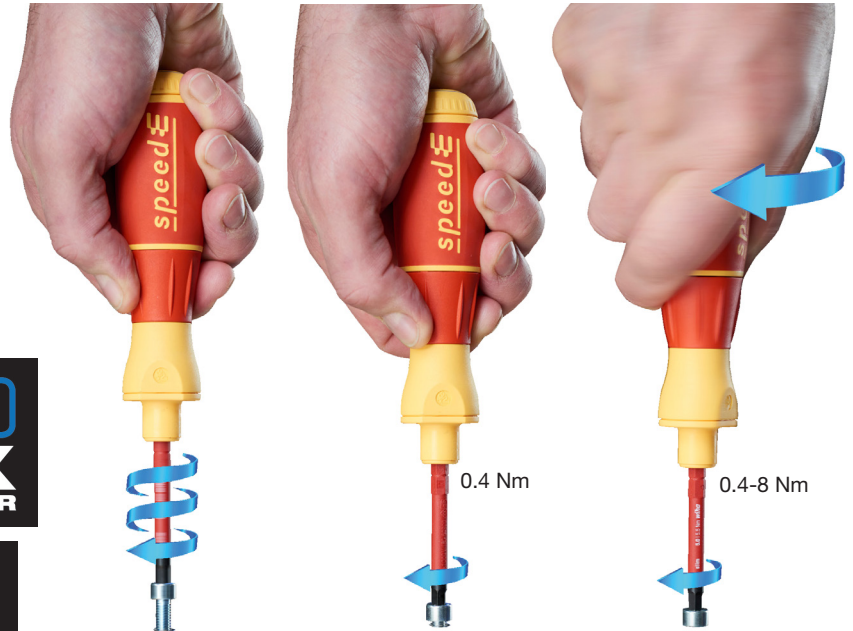
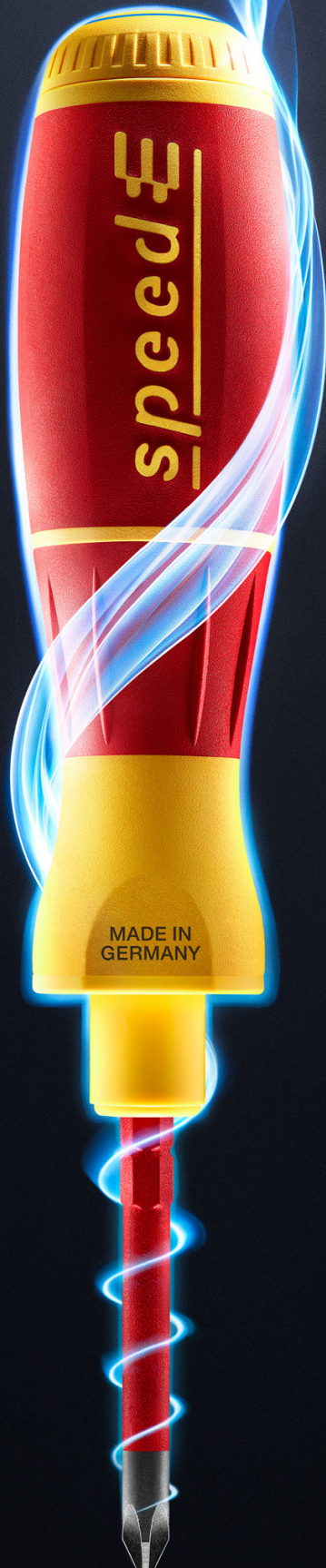


E-SCREWDRIVER speedE® ELECTRIC



- **Protects your material** Electric fastening with a protective function to prevent damage to materials (max. 0.4 Nm = 3.5 in/lbs.)

- **Increases your control** Fixing by hand with full sensitivity

- **Increases your efficiency** Electronic ratchet for rapid fastening without any re-gripping

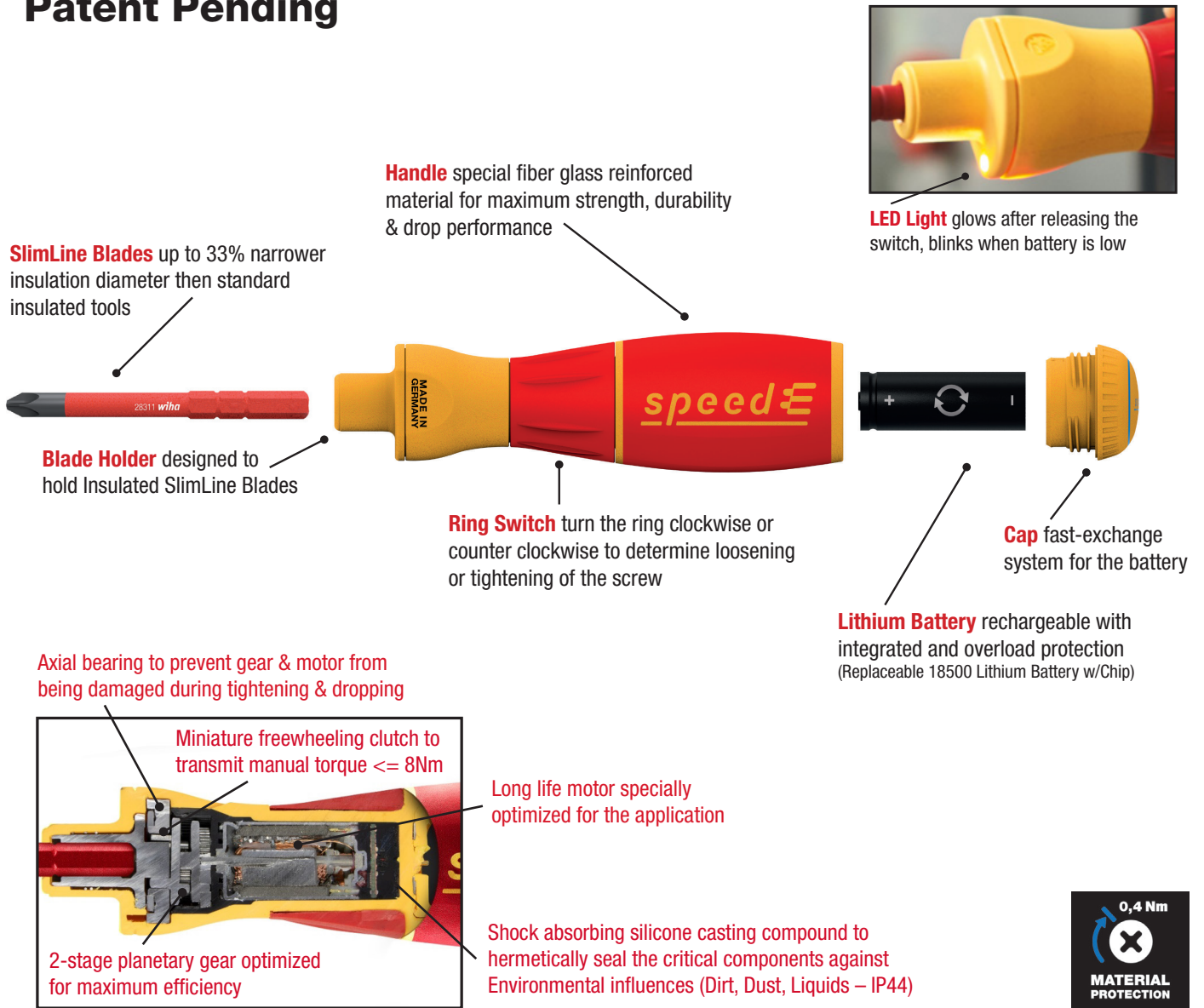
- **Increases your efficiency** 100% compatible with the Wiha slimLine blade system

- **Maximum freedom** of choice Open system with a rechargeable standard battery

- **Offers you full protection** slimLine blades tested at 10,000 V AC & approved for 1,000 V AC

E-SCREWDRIVER speedE® ELECTRIC

Patent Pending



SlimLine Blades up to 33% narrower insulation diameter than standard insulated tools

Blade Holder designed to hold Insulated SlimLine Blades

Handle special fiber glass reinforced material for maximum strength, durability & drop performance

Ring Switch turn the ring clockwise or counter clockwise to determine loosening or tightening of the screw

Cap fast-exchange system for the battery

Lithium Battery rechargeable with integrated and overload protection (Replaceable 18500 Lithium Battery w/Chip)

Axial bearing to prevent gear & motor from being damaged during tightening & dropping

Miniature freewheeling clutch to transmit manual torque $\leq 8\text{Nm}$

2-stage planetary gear optimized for maximum efficiency

Long life motor specially optimized for the application

Shock absorbing silicone casting compound to hermetically seal the critical components against Environmental influences (Dirt, Dust, Liquids – IP44)

LED Light glows after releasing the switch, blinks when battery is low



0.4Nm = 3.5 in/lbs.
8Nm = 70 in/lbs.



E-SCREWDRIVER speedE® ELECTRIC

13 Piece Set



- **Storage Box** L-Boxx mini storage solution for tradesmen and service professional that are always on the move. Perfect for holding the speedE screwdriver and all the speedE accessories.



- **speedE Handle** electric fastening with protective functions to prevent damage to materials. One speed rotation for maximum of 0.4 Nm torque to assist with screw fastening.



- **SlimLine Blades** 1000 Volt Insulated SlimLine blades, 33% narrower insulation diameter than standard insulated tools.

- **Slotted** 3.5, 5.5mm
- ⊕ **Phillips** #1, #2
- ⊖ **Square** #1, #2
- ⊕ **Terminal Xeno** #1, #2



- **Adapter Plug** 110 Volt adapter wall plug included. Easy to use and practical for traveling.

- **Battery Charger & Batteries** Li-Ion battery charges off USB power source. The charger level indicator will light up red when batteries are charging and then green when the batteries are fully charged.



E-SCREWDRIVER speedE® ELECTRIC

speedE that works for you



speedE Electric 13 Piece Set



Packaging
H 2-5/8"
W 10-1/4"
L 6-1/8"

wiha 

Tools that work for you

Wiha Tools, Ltd.


1348 Dundas Circle
Monricello, MN 55362

Tel 800.494.6104
Fax 763.295.6598
Cservice@wihatools.com

www.wihatools.com

32480 13 Pc. speedE Electric Screwdriver With SlimLine Blades

Certified to EN ISO, BS EN, ASME. Set includes speedE electric 0.4 Nm handle, 8 Insulated SlimLine blades, 2 Li-Ion rechargeable batteries & wall plug adapter/charger.

Item No.	speedE Screwdriver: Handle Range 0.4 Nm	
	Insulated SlimLine Blades Include:	
32480	SlimLine Slotted: 3.5, 5.5mm	lbs.
	SlimLine Phillips: #1, #2	2.14
	SlimLine Square: #1, #2	List
	SlimLine Terminal Xeno SI/Ph: #1, #2	\$249.96

1 Year Warranty

Within 30 days of purchase register your speedE at:
USA / MEXICO / SOUTH AMERICA www.wihatools.com/register
CANADA www.wihatools.ca/register