

ITEM	PART#	DESCRIPTION	QTY	UOM
A	22013057	100KKTermHsgW/LRamp W/PoR 5Ckt 2695-05RP	1	PC
B	8500113	KK 100 Crp Term Std 22-30 Awg Tin	5	PC
C	--	PAPER PRINTED PAPER WHITE	1	PC

FROM	TO	DESCRIPTION	COLOR
A1	--	1X22AWG DISC MPPE BK UL11028	BLACK
A2	--	1X22AWG DISC MPPE BK UL11028	BLACK
A3	--	1X22AWG DISC MPPE BK UL11028	BLACK
A4	--	1X22AWG DISC MPPE BK UL11028	BLACK
A5	--	1X22AWG DISC MPPE BK UL11028	BLACK

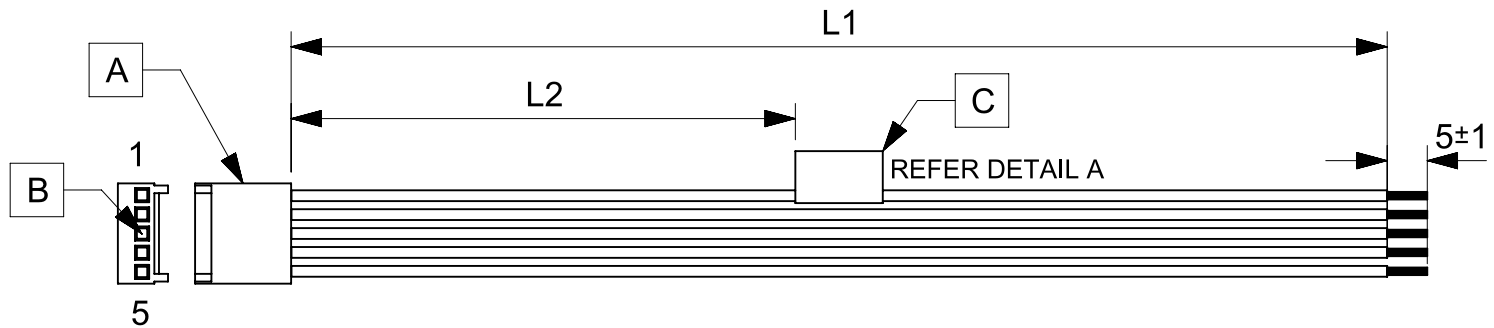


TABLE			
PART NUMBER	L1	L2	TITLE
2177971051	150±8	63 REF	KK 2.54 SR R-S 5CKT 150MM DISC Sn
2177971052	300±10	138 REF	KK 2.54 SR R-S 5CKT 300MM DISC Sn
2177971053	600±10	288 REF	KK 2.54 SR R-S 5CKT 600MM DISC Sn

- NOTES**
1. Connector view shown is from mating side.
 2. Free ends must be stripped, twisted & tinned. The length of tinning is 5±1mm. Tinning dia must be 0.9mm Max.
 3. Label text must be 2mm max. in height with Arial font.
 4. Label must be wrapped in Flag type on a single cable.

MOLEX P/N
MOLEX
BATCH WK/YR
DETAIL A

REVISION			
DATE	REV	DESCRIPTION	CHANGER
11/01/2021	A	INITIAL RELEASE	ARAJU

FUNCTIONAL SYMBOLS $\frac{F}{A} = 0$ $\frac{F}{E} = 0$ $\frac{F}{P} = 0$ DIVISIONAL SYMBOLS	THIS DRAWING CONTAINS INFORMATION THAT IS PROPRIETARY TO MOLEX ELECTRONIC TECHNOLOGIES, LLC AND SHOULD NOT BE USED WITHOUT WRITTEN PERMISSION		CURRENT REV DESC:	
	DIMENSION UNITS	SCALE	EC NO: 652805	
	mm	NTS	DRWN: ARAJU 2021/01/09	
	GENERAL TOLERANCES (UNLESS SPECIFIED)		2021/01/11	
ANGULAR TOL ± °		CHK'D: RDESAI01 2021/01/11		
4 PLACES ±		APPR: RDESAI01 2021/01/11		
3 PLACES ±		INITIAL REVISION:		
2 PLACES ±		DRWN: ARAJU 2021/01/09		
1 PLACE ±		2021/01/11		
0 PLACES ±		APPR: RDESAI01 2021/01/11		
DRAFT WHERE APPLICABLE MUST REMAIN WITHIN DIMENSIONS		THIRD ANGLE PROJECTION	DRAWING	SERIES
			A4-SIZE	217797
		MATERIAL NUMBER		DOC TYPE
		SEE TABLE		PSD
		CUSTOMER		DOC PART
		GENERAL MARKET		000
		SHEET NUMBER		REVISION
		1 OF 1		A

RELEASE STATUS	P1	RELEASE DATE	2021/01/11	10:46:55
----------------	----	--------------	------------	----------