

ITEM	PART#	DESCRIPTION	QTY	UOM
A	2077820002	2ckt Receptacle Assembly for Squba 3.6	1	PC
B	2077770001	Squba 3.6 female terminal 16 AWG	2	PC
C	--	PAPER PRINTED PAPER WHITE	1	PC

FROM	TO	DESCRIPTION	COLOR
A1	--	1X16AWG DISC MPPE BK UL11028 HOOKUP	BLACK
A2	--	1X16AWG DISC MPPE BK UL11028 HOOKUP	BLACK

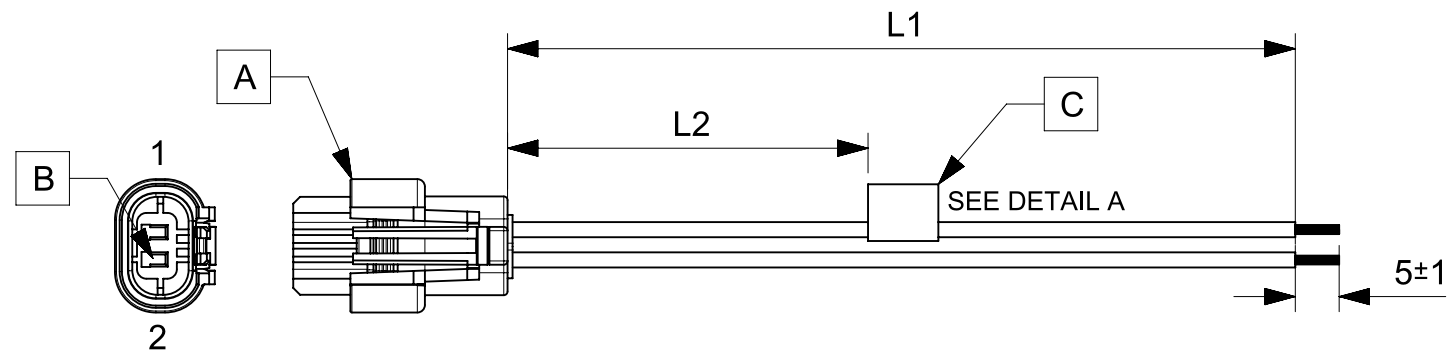


TABLE			
PART NUMBER	L1	L2	TITLE
2166211021	150±8	63 REF	SQUBA3.6 R-S 2CKT 150MM Sn
2166211022	300±10	138 REF	SQUBA3.6 R-S 2CKT 300MM Sn
2166211023	600±10	288 REF	SQUBA3.6 R-S 2CKT 600MM Sn

- NOTES**
1. Connector view shown is from mating side.
 2. Leak test must be ensured for sealed connector.
 3. Free ends must be stripped, twisted & tinned. The length of tinning is 5±1mm. Tinning dia must be 1.9mm Max.
 4. Label text must be 2mm max. in height with Arial font.
 5. Label must be wrapped in Flag type on a single cable.

MOLEX P/N
MOLEX
BATCH WK/YR
DETAIL A

REVISION			
DATE	REV	DESCRIPTION	CHANGER
2020/06/23	A	INITIAL RELEASE	ARAJU
2020/07/16	A1	TINNING DIA UPDATED	ARAJU

FUNCTIONAL SYMBOLS FA = 0 FE = 0 FP = 0	THIS DRAWING CONTAINS INFORMATION THAT IS PROPRIETARY TO MOLEX ELECTRONIC TECHNOLOGIES, LLC AND SHOULD NOT BE USED WITHOUT WRITTEN PERMISSION		CURRENT REV DESC:		molex
	DIMENSION UNITS mm	SCALE NTS	EC NO: 641908 DRWN: ARAJU 2020/07/16 CHK'D: RDESAI01 2020/07/21 APPR: RDESAI01 2020/07/21		
DIVISIONAL SYMBOLS	GENERAL TOLERANCES (UNLESS SPECIFIED)		INITIAL REVISION:		DOCUMENT NUMBER 2166211021
	ANGULAR TOL ± °		DRWN: ARAJU 2020/06/23 APPR: RDESAI01 2020/07/08		
4 PLACES ±		0 PLACES ±		DOC TYPE PSD	
3 PLACES ±		1 PLACE ±		DOC PART 000	
2 PLACES ±		0 PLACES ±		REVISION A1	
1 PLACE ±		DRAFT WHERE APPLICABLE MUST REMAIN WITHIN DIMENSIONS		MATERIAL NUMBER SEE TABLE	
0 PLACES ±		THIRD ANGLE PROJECTION		CUSTOMER GENERAL MARKET	
		DRAWING A4-SIZE		SHEET NUMBER 1 OF 1	
		SERIES 216621			

RELEASE STATUS	P1	RELEASE DATE	2020/07/21	05:32:27
----------------	----	--------------	------------	----------