

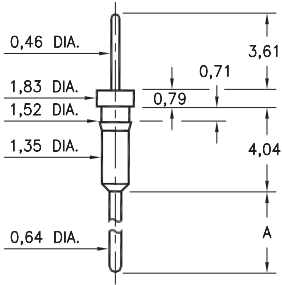
MALE PCB PINS

PRINTED CIRCUIT PINS

3409

3409-X-00-XX-00-00-03-0

Press-fit in 1,45 mounting hole

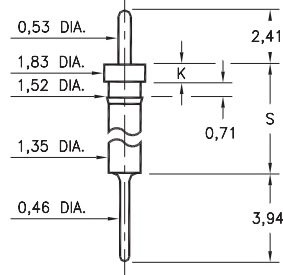


| Basic Part Number | Pin Length A |
|-------------------|--------------|
| 3409-1 | 5,33 |
| 3409-2 | 10,67 |

0315

0315-0-00-XX-00-00-03-0

Press-fit in 1,45 mounting hole
Pin material is Phosphor Bronze 544 (B2)

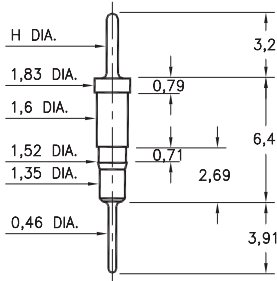


| Basic Part Number | Head Height K | Standoff Height S |
|-------------------|---------------|-------------------|
| 0315-0 | 0,76 | 4,83 |
| 0315-1 | 1,02 | 10,92 |

5503/5509

550X-X-00-XX-00-00-03-0

Press-fit in 1,45 mounting hole

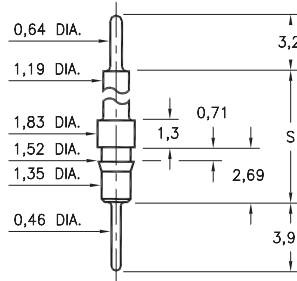


| Basic Part Number | Pin Diameter H |
|-------------------|----------------|
| 5503-0 | 0,64 |
| 5509-0 | 0,46 |

5504/5505

550X-0-00-XX-00-00-03-0

Press-fit in 1,45 mounting hole

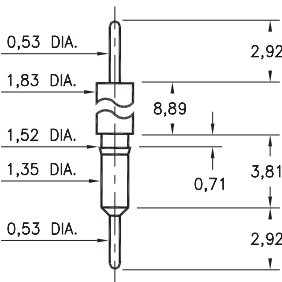


| Basic Part Number | Standoff Height S |
|-------------------|-------------------|
| 5504-0 | 8,41 |
| 5505-0 | 15,39 |

3406

3406-0-00-XX-00-00-03-0

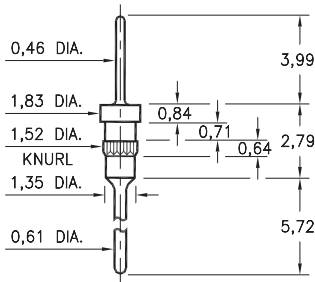
Press-fit in 1,45 mounting hole



5011

5011-0-00-XX-00-00-03-0

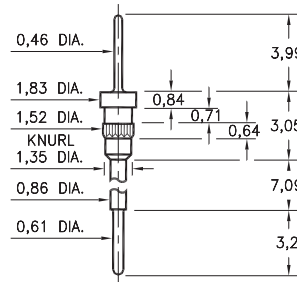
Press-fit in 1,45 mounting hole



5113

5113-0-00-XX-00-00-03-0

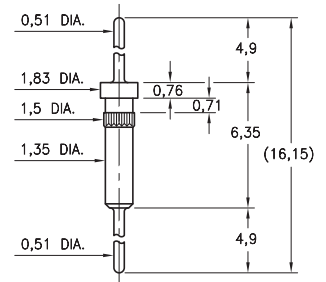
Press-fit in 1,45 mounting hole



3900

3900-0-00-15-00-00-03-0

Press-fit in 1,45 mounting hole



SPECIFICATIONS:

Pin Material: Brass Alloy 360, 1/2 Hard
(Except where noted)

Dimensions: Millimeters

Tolerances On: Lengths: $\pm 0,13$
Diameters: $\pm 0,051$
Angles: $\pm 2^\circ$



ORDER CODE: XXXX - X - 00 - XX - 00 - 00 - 03 - 0

BASIC PART #

SPECIFY PIN FINISH:

- 01 5,08 μ m TIN/LEAD OVER NICKEL
- ◆ 80 5,08 μ m TIN OVER NICKEL (RoHS)
- ◆ 15 0,25 μ m GOLD OVER NICKEL (RoHS)
- ◆ 21 0,51 μ m GOLD OVER NICKEL (RoHS)
- ◆ 34 1,27 μ m GOLD OVER NICKEL (RoHS)

