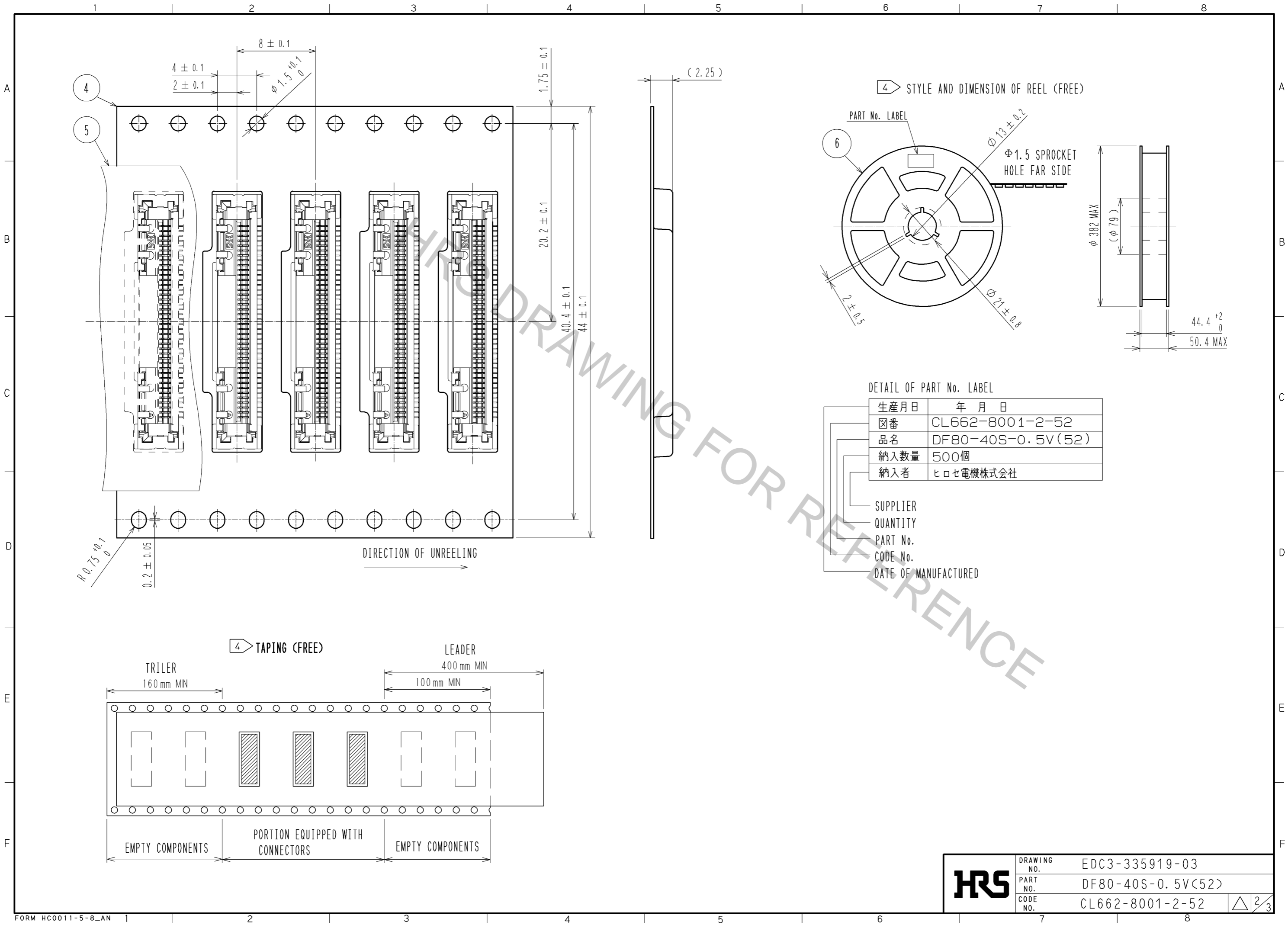


- NOTES
1. LEAD CO-PLANARITY SHALL BE 0.1mmMAX.
  2. PER REEL : 500 COMPONENTS.
  3. THE DIMENSIONS IN PARENTHESES ARE FOR REFERENCE.
  4. REFER TO JIS 0806. (PACKING OF COMPONENTS FOR AUTO HANDRING)

2	LCP	UL94V-0 , BLACK	6	PS	BLACK
1	PHOSPHOR BRONZE	CONTACT AREA : Au PLATING 0.05μmMIN LEAD AREA : Au PLATING 0.05μmMIN UNDER PLATING : Ni PLATING 1μmMIN	5	POLYESTER	CLEAR
			4	PS	CLEAR
			3	PHOSPHOR BRONZE	WHOLE AREA : Sn PLATING 1μmMIN UNDER PLATING : Cu PLATING 0.3μmMIN
NO.	MATERIAL	FINISH , REMARKS	NO.	MATERIAL	FINISH , REMARKS
UNITS mm		SCALE 4 : 1	COUNT 	DESCRIPTION OF REVISIONS	
APPROVED : MH. YAMANE 13.08.31			DESIGNED	DATE	
CHECED : MH. TSUCHIDA 13.08.30			DESIGNED	DATE	
DESIGNED : IO. DENPOUYA 13.08.30			DESIGNED	DATE	
DRAWN : IO. DENPOUYA 13.08.30			DESIGNED	DATE	
<b>HRS</b> HIROSE ELECTRIC CO., LTD.			DRAWING NO.	EDC3-335919-03	
			PART NO.	DF80-40S-0.5V(52)	
			CODE NO.	CL662-8001-2-52	



<b>HRS</b>	DRAWING NO.	EDC3-335919-03
	PART NO.	DF80-40S-0.5V(52)
	CODE NO.	CL662-8001-2-52
		△ 2/3

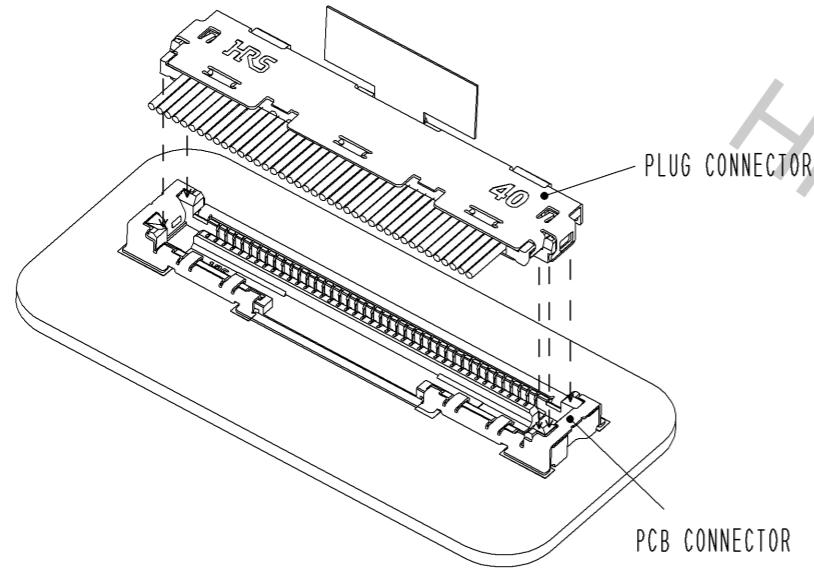
**[ CONNECTOR INSERTION ]**

1. ALIGN THE PLUG CONNECTOR TO THE GUIDES ON PCB CONNECTOR AND INSERT.
2. APPLY EVEN FORCE TO THE PLUG CONNECTOR SURFACE AND FEEL TACTILE CLICK FOR COMPLETE LOCK.

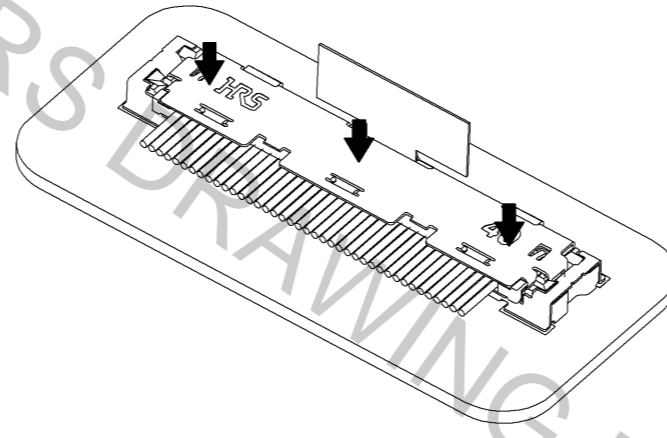
**SUPPLEMENTATION**

TOTAL HEIGHT IS KEPT WITHIN THE HEIGHT OF MATED CONNECTORS BY LAYING DOWN THE PULL TAB AS SHOWN.

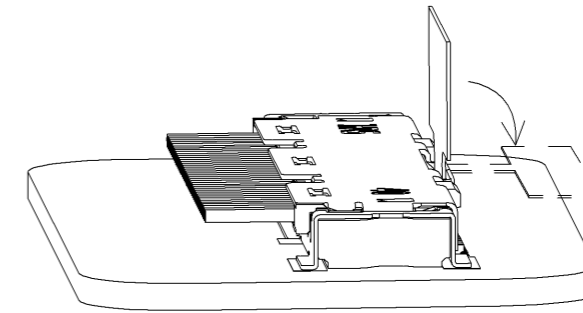
PROCEDURE 1



PROCEDURE 2



SUPPLEMENTATION :  
METHOD OF STORING PULL TAB



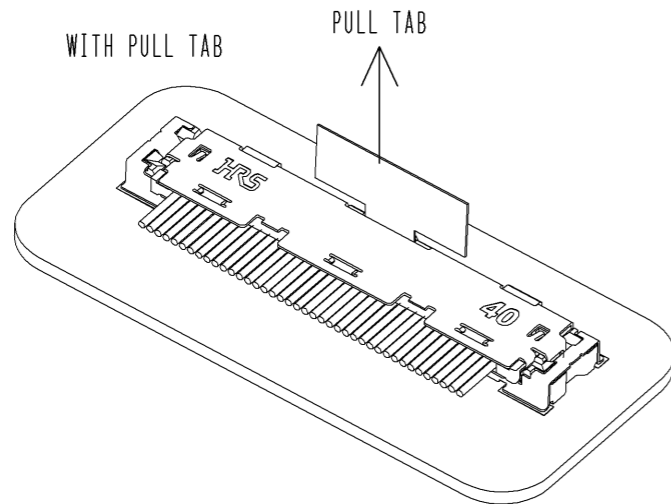
**[ CONNECTOR WITHDRAWAL ]**

**<WITH PULL TAB>**

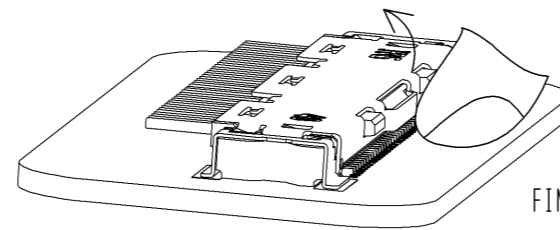
BY PULLING UP THE TAB TO THE DIRECTION INDICATED WITH THE ARROW , PLUG CONNECTOR IS RELEASED.

**<WITHOUT PULL TAB>**

BY HOOKING THE PLUG CONNECTOR AT THE POSITION SHOWN WITH FINGER AND PULLING UP, PLUG CONNECTOR IS RELEASED.



WITHOUT PULL TAB



**HRS**

DRAWING NO.	EDC3-335919-03
PART NO.	DF80-40S-0.5V<52>
CODE NO.	CL662-8001-2-52

△ 3/3