

THIS DRAWING IS UNPUBLISHED.

RELEASED FOR PUBLICATION

ALL RIGHTS RESERVED.

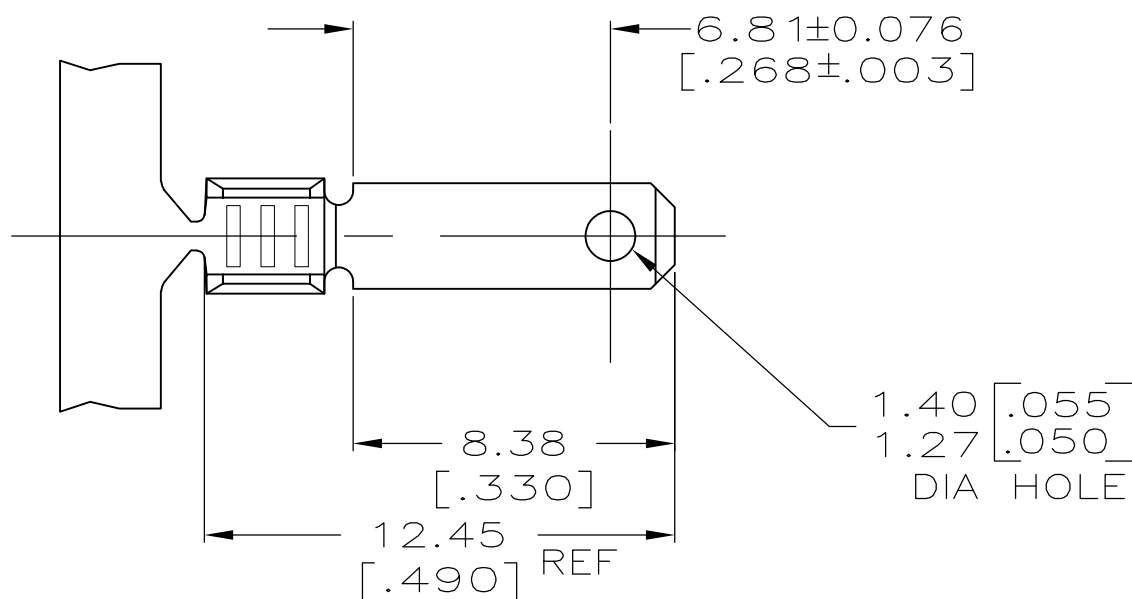
© COPYRIGHT - By -

LOC
AF

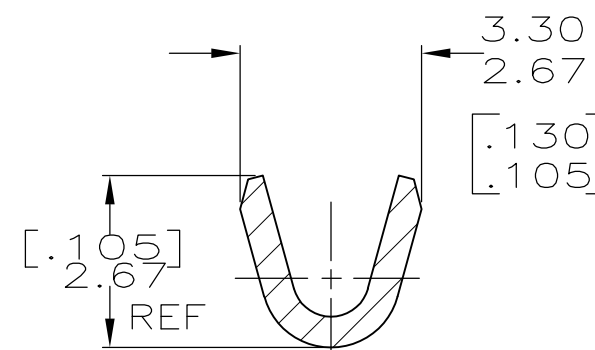
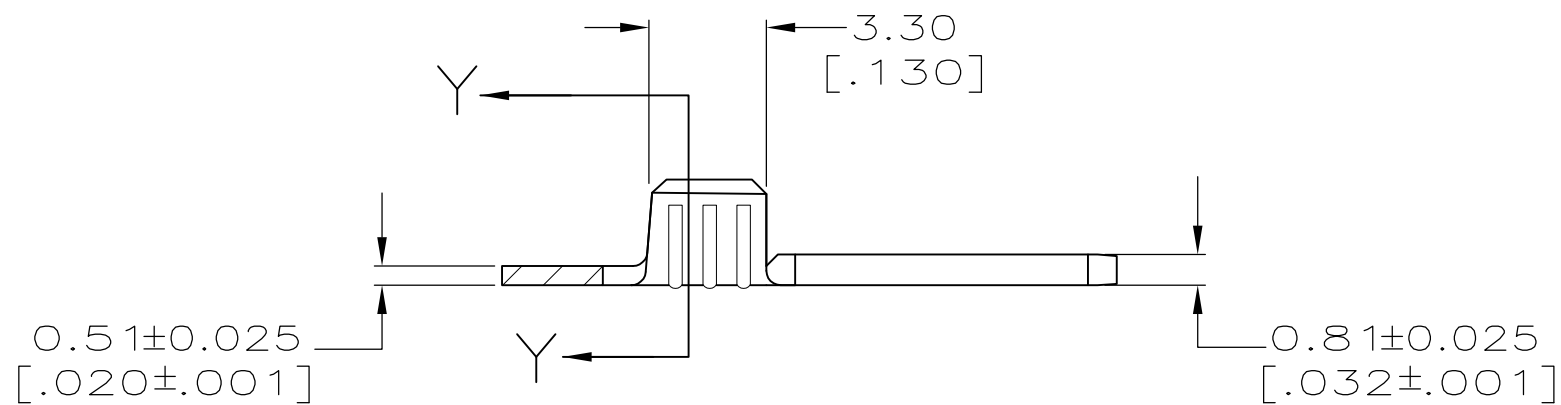
DIST
50

REVISIONS

P	LTR	DESCRIPTION	DATE	DWN	APVD
	E	REVISED PER ECO-11-009587	16JUN11	HMR	PD



1. CONTINUOUS STRIP ON REELS.
2. WIRE SIZE TO BE [#22-#18] AWG.



SECTION Y-Y
SCALE 10:1

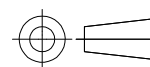
63932-1

PART NO

[#18]	1.55 [.061]
[#20]	1.45 [.057]
[#22]	1.40 [.055]
WIRE SIZE	CRIMP HEIGHT

THIS DRAWING IS A CONTROLLED DOCUMENT.

DIMENSIONS:
mm [INCHES]



TOLERANCES UNLESS OTHERWISE SPECIFIED:

0 PLC	± -
1 PLC	± -
2 PLC	± 0.25 [.010]
3 PLC	± -
4 PLC	± -
ANGLES	± -

MATERIAL
082 PRE-MILLED BRASS

FINISH
TIN

DWN
JR RUTH 8/22/96

CHK
MS FEHER 8/22/96

APVD
P DESANTIS 8/22/96

PRODUCT SPEC

APPLICATION SPEC

WEIGHT -

CUSTOMER DRAWING

STE TE Connectivity

NAME

TAB, FASTON™ 2.79 [.110] SERIES

SIZE

CAGE CODE

DRAWING NO

RESTRICTED TO

A3 00779 C-63932

SCALE 5:1

SHEET 1 OF 1

REV E