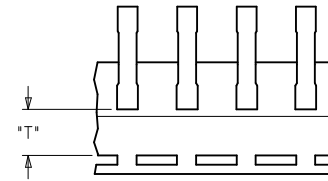
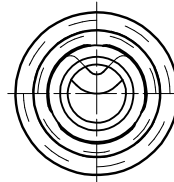
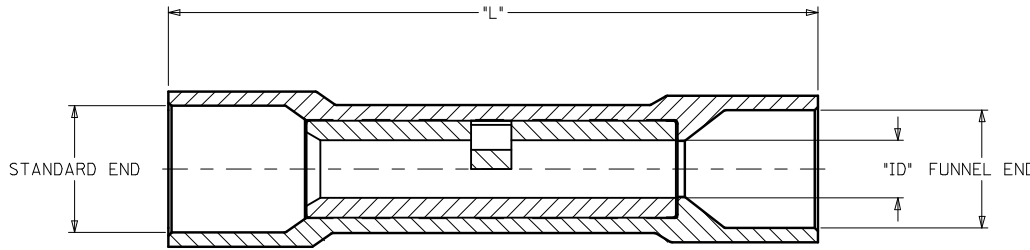


MATERIAL NUMBER	ALTERNATE NUMBER	WIRE SIZE AWG	INSULATION COLOR	CONNECTOR ID	MAX. WIRE INSUL. DIA.		LENTH "L2"	TAPE HEIGHT "T"	DESCRIPTION
					STANDARD END	FUNNEL END			
192020010	AS-932	22-18	LIGHT RED	.061	.161	.147	1.07	----	LOOSE PIECE
192020011	AS-932-DK	22-18	DARK RED	.061	.161	.147	1.07	----	LOOSE PIECE
192020012	AS-932-DKT	22-18	DARK RED	.061	.161	.147	1.07	.480	TAPE MOUNTED
192020026	BS-942	16-14	LIGHT BLUE	.087	.199	.185	1.07	----	LOOSE PIECE
192020030	BS-942T	16-14	LIGHT BLUE	.087	.199	.185	1.07	.480	TAPE MOUNTED
192020027	BS-942-DK	16-14	DARK BLUE	.087	.199	.185	1.07	----	LOOSE PIECE
192020029	BS-942-DKT	16-14	DARK BLUE	.087	.199	.185	1.07	.480	TAPE MOUNTED
192020028	BS-942-DKBT	16-14	DARK BLUE	.087	.199	.185	1.07	.480	TAPE MOUNTED LARGE REEL
192020131	BS-942-B	16-14	BLUE	.087	.199	.185	1.07	----	LOOSE PIECE
192020130	BS-942-BBT (A1)	16-14	BLUE	.087	.199	.185	1.07	.480	TAPE MOUNTED LARGE REEL
192020045	CS-952	12-10	YELLOW	.138	.276	.262	1.15	----	LOOSE PIECE
192020046	CS-952-DK	12-10	DARK YELLOW	.138	.276	.262	1.15	----	LOOSE PIECE
192020047	CS-952-DKT	12-10	DARK YELLOW	.138	.276	.262	1.15	.440	TAPE MOUNTED
192020048	CS-952-DKBT	12-10	DARK YELLOW	.138	.276	.262	1.15	.440	TAPE MOUNTED LARGE REEL
192020141	CS-952 BULK	12-10	YELLOW	.138	.276	.262	1.15	----	BULK PACKED, 2500 PER PACKAGE
192020142	CS-952-DK BULK	12-10	DARK YELLOW	.138	.276	.262	1.15	----	BULK PACKED, 2500 PER PACKAGE

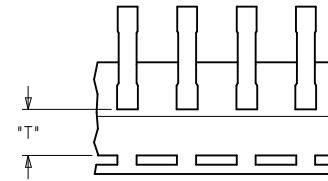
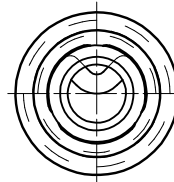
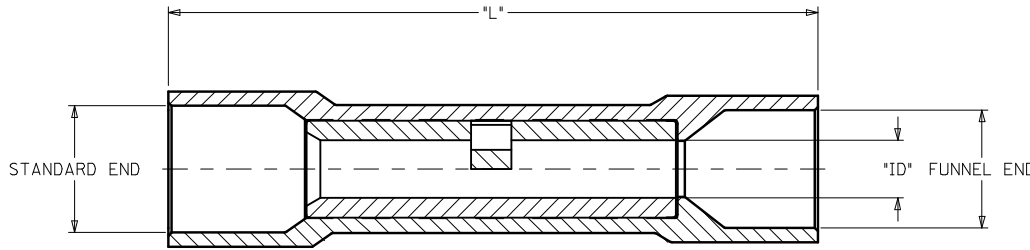


CUSTOMER DRAWING

- NOTES:  
 1. MATERIAL: COPPER.  
 2. PLATING: ELECTRON-TIN.  
 3. INSULATION: 6/6 NYLON  
 4. PARTS ARE ROHS COMPLIANT.

<b>MAT'L NUMBER TYPO</b> EC NO: IPG2017-0325 DRAWN: GROSAS01 2016/09/22 CHKD: JMACNEIL 2016/09/22 APPR: JMACNEIL 2016/10/06 A1	<b>QUALITY SYMBOLS</b> ▽=0 ▽7=0	GENERAL TOLERANCES (UNLESS SPECIFIED)		DIMENSION STYLE IN/MM		SCALE NTS	DESIGN UNITS INCH	THIRD ANGLE PROJECTION		
		4 PLACES ± --- ± ---	mm INCH	DRAWN BY HEB	DATE 2000/07/18	TITLE <b>FUNNEL ENTRY SEAMLESS INSULKRIMP BUTT CONNECTOR</b> <b>molex</b> DOCUMENT NO. SD-19202-001 SHEET NO. 1 OF 1				
		3 PLACES ± --- ± .005		CHECKED BY RWD	DATE 2000/07/18					
		2 PLACES ± 0.13 ± .01		APPROVED BY DATE						
		1 PLACE ± 0.25 ± ---								
0 PLACE ± ±										
		ANGULAR ±1/2° DRAFT WHERE APPLICABLE MUST REMAIN WITHIN DIMENSIONS		MATERIAL NO. SEE CHART						

MATERIAL NUMBER	ALTERNATE NUMBER	WIRE SIZE AWG	INSULATION COLOR	CONNECTOR ID	MAX. WIRE INSUL. DIA.		LENTH "L2"	TAPE HEIGHT "T"	DESCRIPTION
					STANDARD END	FUNNEL END			
192020010	AS-932	22-18	LIGHT RED	.061	.161	.147	1.07	----	LOOSE PIECE
192020011	AS-932-DK	22-18	DARK RED	.061	.161	.147	1.07	----	LOOSE PIECE
192020012	AS-932-DKT	22-18	DARK RED	.061	.161	.147	1.07	.480	TAPE MOUNTED
192020026	BS-942	16-14	LIGHT BLUE	.087	.199	.185	1.07	----	LOOSE PIECE
192020030	BS-942T	16-14	LIGHT BLUE	.087	.199	.185	1.07	.480	TAPE MOUNTED
192020027	BS-942-DK	16-14	DARK BLUE	.087	.199	.185	1.07	----	LOOSE PIECE
192020029	BS-942-DKT	16-14	DARK BLUE	.087	.199	.185	1.07	.480	TAPE MOUNTED
192020028	BS-942-DKBT	16-14	DARK BLUE	.087	.199	.185	1.07	.480	TAPE MOUNTED LARGE REEL
192020131	BS-942-B	16-14	BLUE	.087	.199	.185	1.07	----	LOOSE PIECE
192020130	BS-942-BBT (A1)	16-14	BLUE	.087	.199	.185	1.07	.480	TAPE MOUNTED LARGE REEL
192020045	CS-952	12-10	YELLOW	.138	.276	.262	1.15	----	LOOSE PIECE
192020046	CS-952-DK	12-10	DARK YELLOW	.138	.276	.262	1.15	----	LOOSE PIECE
192020047	CS-952-DKT	12-10	DARK YELLOW	.138	.276	.262	1.15	.440	TAPE MOUNTED
192020048	CS-952-DKBT	12-10	DARK YELLOW	.138	.276	.262	1.15	.440	TAPE MOUNTED LARGE REEL
192020141	CS-952 BULK	12-10	YELLOW	.138	.276	.262	1.15	----	BULK PACKED, 2500 PER PACKAGE
192020142	CS-952-DK BULK	12-10	DARK YELLOW	.138	.276	.262	1.15	----	BULK PACKED, 2500 PER PACKAGE



CUSTOMER DRAWING

- NOTES:  
 1. MATERIAL: COPPER.  
 2. PLATING: ELECTRON-TIN.  
 3. INSULATION: 6/6 NYLON  
 4. PARTS ARE ROHS COMPLIANT.

<b>MAT'L NUMBER TYPO</b> EC NO: IPG2017-0325 DRAWN: GROSAS01 2016/09/22 CHKD: JMACNEIL 2016/09/22 APPR: JMACNEIL 2016/10/06 A1	<b>QUALITY SYMBOLS</b> ▽=0 ▽7=0	GENERAL TOLERANCES (UNLESS SPECIFIED)		DIMENSION STYLE IN/MM		SCALE NTS	DESIGN UNITS INCH	THIRD ANGLE PROJECTION		
		4 PLACES ± --- ± ---	mm INCH	DRAWN BY HEB	DATE 2000/07/18	TITLE FUNNEL ENTRY SEAMLESS INSULKRIMP BUTT CONNECTOR <b>molex</b>				
		3 PLACES ± --- ± .005		CHECKED BY RWD	DATE 2000/07/18					
		2 PLACES ± 0.13 ± .01		APPROVED BY DATE		MATERIAL NO. SEE CHART				
		1 PLACE ± 0.25 ± ---								
0 PLACE ± ±				DOCUMENT NO. SD-19202-001		SHEET NO. 1 OF 1				

ANGULAR ±1/2°  
 DRAFT WHERE APPLICABLE  
 MUST REMAIN WITHIN DIMENSIONS

SIZE B  
 THIS DRAWING CONTAINS INFORMATION THAT IS PROPRIETARY TO MOLEX INCORPORATED AND SHOULD NOT BE USED WITHOUT WRITTEN PERMISSION