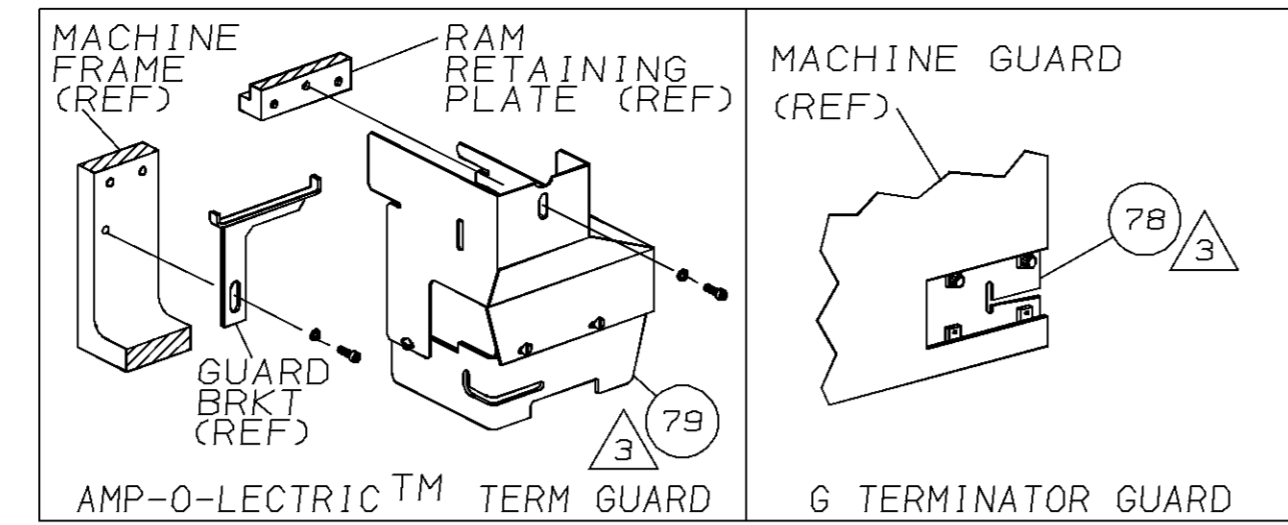


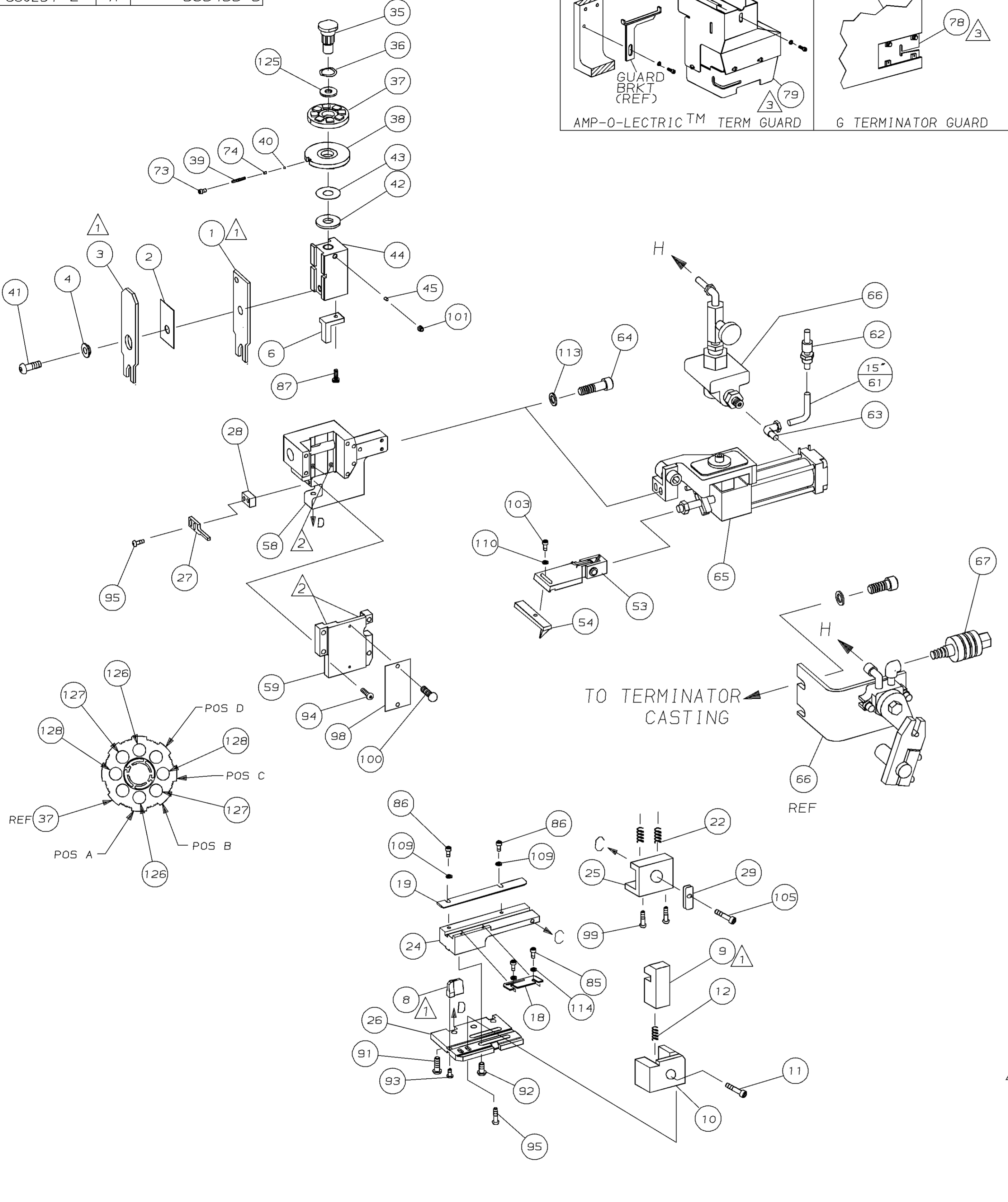
PART NUMBER	REV	FIRST USED
680294-1	A	854400-1
680294-2	A	565435-5



TERMINAL NAME: 2.5mm FLAG CONTACT, SOCKET			
CRIMPING DATA			
PAD LTR	CRIMP HEIGHT	WIRE SIZE	
A	.044 ± .002 [1.11 ± 0.05mm]	0.35mm ² or 22	
B	.042 ± .002 [1.07 ± 0.05mm]	0.25mm ² or (2)26	
C	.041 ± .002 [1.05 ± 0.05mm]	0.20mm ² or (2)28	
D	NOT	USED	
CRIMP	SIZE	TYPE	RANGE
WIRE	.062 [1.57mm]	F	0.20mm ² -0.35mm ²
INSUL	.090 [2.29mm]	F	∅1mm-1.6mm
WIRE STRIP LENGTH	TERM APPL SPEC	FEED	APPL INSTRUCTION
-	NONE	.788	408-8039
			SET UP GAGE LAYOUT
			458638-1 L1527

QTY	REV	U/M	DWG SIZE	PART NO	DESCRIPTION	ITEM NO
-1					LEADMAKER & BENCH MODEL G AIRFEED	
-2					BENCH MODEL K AIRFEED	
1				692655-5	AIR FEED VALVE ASSY	70
REF				24042-2	VALVE, SHUT OFF	67
REF				692655-6	AIR FEED VALVE ASSY	66
1				460277-1	AIR FEED ASSY	65
2				3-21000-9	SCR,SHC 10-32x1.00 AIR ASSY	64
-				983427-6	ELBOW, TUBING 1/8NPT - 1/4 T	63
-				23238-1	QUICK DISCONNECT	62
12.00				27319-4	TUBING, POLY-FLO ∅.25	61
1				467284-1	CAP, RAM	59
1				683742-1	HOUSING	58
1				679904-2	PAWL, FEED	54
1				461062-1	HOLDER, FEED FINGER	53
1				690191-1	PLUG, NYLON	45
1				683741-2	RAM	44
1				690125-1	WASHER, LAMINATED	43
1				1-690124-4	WASHER, RAM	42
1				7-21002-9	BOLT, CRIMPER (5/16-24x1.00)	41
1				23241-6	BALL, STEEL	40
1				690170-1	SPRING, COMPRESSION	39
1				690142-1	DISC, INSULATION	38
1				354777-1	WIRE DISC, PLASTIC	37
1				22480-5	WASHER, SPRING	36
1				690212-1	POST, RAM	35
1				240793-1	LEVER, DRAG RELEASE	29
1				3-690451-2	SPACER, STRIPPER	28
1				240639-1	STRIPPER	27
1				679850-1	PLATE, BASE	26
1				240792-1	DRAG, TERMINAL	25
1				679868-1	PLATE, STRIP GUIDE	24
2				1-22284-0	SPRING, DRAG	22
1				679768-1	GUIDE, STRIP (REAR)	19
1				690438-2	GUIDE, STRIP (FRONT)	18
1				5-22280-0	SPRING, SHEAR	12
1				1-609461-3	STOP, SHEAR	11
1				679829-1	HOLDER, SHEAR	10
1				679835-1	SHEAR, FLOATING	9
1				679887-3	ANVIL	8
1				467499-3	HOLD DOWN, TERMINAL	6
1				1-238009-4	SPACER, BLOCK CRIMPER	4
1				6-456134-0	CRIMPER, INSULATION	3
1				1-455888-2	SPACER, CRIMPER	2
1				3-456403-7	CRIMPER, WIRE	1

QTY	REV	U/M	DWG SIZE	PART NO	DESCRIPTION	ITEM NO
2				3-354779-3	PIN, WIRE DISC (.3155)C	129
2				3-354779-0	PIN, WIRE DISC (.3140)B	127
2				2-354779-5	PIN, WIRE DISC (.3115)A	126
1				986950-1	WASHER, FLAT PRECISION	125
						124
						123
						122
						121
						120
						119
						118
						117
						116
						115
2				21024-2	WASHER, LOCK (NO.4) ST GU PL	114
2				21024-5	WASHER, LOCK (NO.10) SHEAR PL	113
						112
						111
1				21024-4	WASHER, LOCK (NO.8) FEED	110
2				21024-3	WASHER, LOCK (NO.6) ST GU PL	109
						108
						107
1				22353-8	SCR, SHLD (∅.187x.25) DRAG LEVER	105
						104
1				2-22603-0	SCR, SHC (8-32x.38) FEED HOLDER	103
2				2-21006-6	SCR, SKT SET (4-40x.62) DRAG	102
1				21009-2	SCR, SKT SET (1/4-20x.25)RAM	101
2				21017-2	SCR, DRIVE (#2x.19) ID PLATE	100
2				3-21002-0	SCR, BHC (10-32x.88) DRAG	99
1				461264-1	PLATE, IDENTIFICATION	98
						97
						96
2				2-21002-2	SCR, BHC (8-32x.50) STRIPPER	95
4				2-21002-9	SCR, BHC (10-32x.75) CAP	94
1				22733-8	SCR, BHC (8-32x.38 LW) ANVIL	93
4				3-21002-3	SCR, BHC (1/4-20x.50) ST GD PL	92
3				2-22733-8	SCR, BHC (1/4-20x.62) HSG	91
						90
						89
						88
1				2-21000-7	SCR, SHC (8-32x.50) SHEAR DEP	87
2				2-21000-0	SCR, SHC (6-32x.50) STRIP GUIDE	86
2				1-21000-3	SCR, SHC (4-40x.25) F ST GU	85
						84
						83
						82
						81
2				3-21000-8	SCR, SKT CAP (10-32x.88) SH PL	80
1				455750-7	GUARD ASSY	79
-				REF	INSERT, GUARD	78
						77
						76
						75
1				690603-1	SPRING, ASSIST	74
1				23030-1	SCR, SKT CAP (6-32x.25) CP DSC	73
						72
						71



- 1 RECOMMENDED SPARE PARTS.
- 2 GREASE LIGHTLY.
- 3 GUARD MUST BE IN PLACE WHEN OPERATING APPLICATOR IN A BENCH MACHINE.
- 4 SEE DRAWING FOR COMPONENTS
- 5 ITEM 78 REQUIRED FOR BENCH G TERMINATOR ONLY.

QTY REQD PER ASSY	REV	U/M	DWG SIZE	PART NO	DESCRIPTION	ITEM NO
-2	-1	U/M				

QTY REQD PER ASSY	REV	U/M	DWG SIZE	PART NO	DESCRIPTION	ITEM NO
-2	-1	U/M				

LOC A
DIST 66

DIMENSIONS IN INCHES. DO NOT SCALE PRINT. TOLERANCES UNLESS OTHERWISE SPECIFIED:
 2 PLC DEC ± .25
 3 PLC DEC ± .1
 4 PLC DEC ± .05
 ANGLES ± .5
 SURF TEXTURE: REMOVE BURRS, BREAK SHARP EDGES R.015 MAX

MATL - HT TR - FIN -

DR 3-29-96 APP 3-29-96
 M. O'BRINE T. ELBIN
 CHK 3-29-96 REL 7/23/96
 C. ERISMAN B. MORGAN

AMP Incorporated
 Harrisburg, PA 17105-3608

NAME END FEED HDM APPLICATOR MACHINE REF MINI APPL
 SCALE - DWG NO 680294 SHEET 1 OF 1 REV A

THIS DRAWING IS A CONTROLLED DOCUMENT FOR AMP INCORPORATED. IT IS SUBJECT TO CHANGE AND THE CONTROLLING ENGINEERING ORGANIZATION SHOULD BE CONTACTED FOR THE LATEST REVISION.

THIS INFORMATION IS CONFIDENTIAL AND IS DISCLOSED TO YOU ON CONDITION THAT NO FURTHER DISCLOSURE IS MADE BY YOU TO OTHER THAN AMP PERSONNEL WITHOUT WRITTEN AUTHORIZATION FROM AMP INCORPORATED, HARRISBURG, PA.