



# PRODUCT DATASHEET

## Laura series

last update 12/5/2016

### DETAILS

<b>Product Number</b>	CX12568_LAURA-W
<b>Family</b>	Laura
<b>Type</b>	Pack
<b>Color</b>	white
<b>Diameter</b>	21,6 x 21,6 mm
<b>Height</b>	12,9 mm
<b>Style</b>	square
<b>Optic Material</b>	PMMA
<b>Holder Material</b>	
<b>Fastening</b>	tape
<b>Status</b>	production ready
<b>ROHS Compliant</b>	Yes
<b>Date Updated</b>	12/05/2016



### OPTICAL PROPERTIES

LED	Viewing Angle	Light Beam	Efficiency	cd/lm	Connector
LUXEON Rebel	39 deg	Wide	88 %	1.900	-
LUXEON Rebel ES	47 deg	Wide	89 %	-	-

D

C

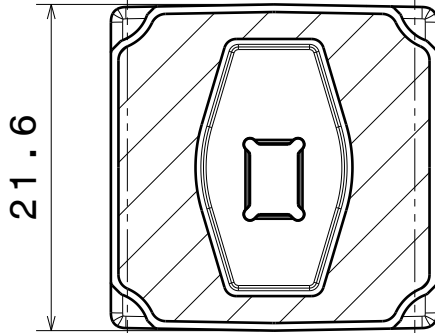
B

A

4

4

Oval-version  
beam direction



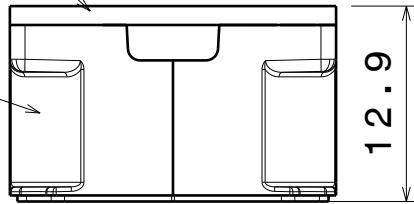
Bottom view

3

3

Optic

Holder



Front view

2

2

Materials  
 lens: PMMA  
 holder: PC White  
 Tape: PU Foam

1

1

This drawing is our property.  
 It can't be reproduced  
 or communicated without  
 our written agreement.



L  
T  
F  
F

e  
e  
i  
i  
N  
n

d

h

DRAWING TITLE

Assy Datasheet Laura-tape series

DRAWN BY

DATE

p

02.08.2010

CHECKED BY

DATE

s

n

22.07.2010

DESIGNED BY

DATE

hh

21.01.2010

SIZE

A4

DRAWING NUMBER

CA11352

REV

1

SCALE

2:1

WEIGHT (g)

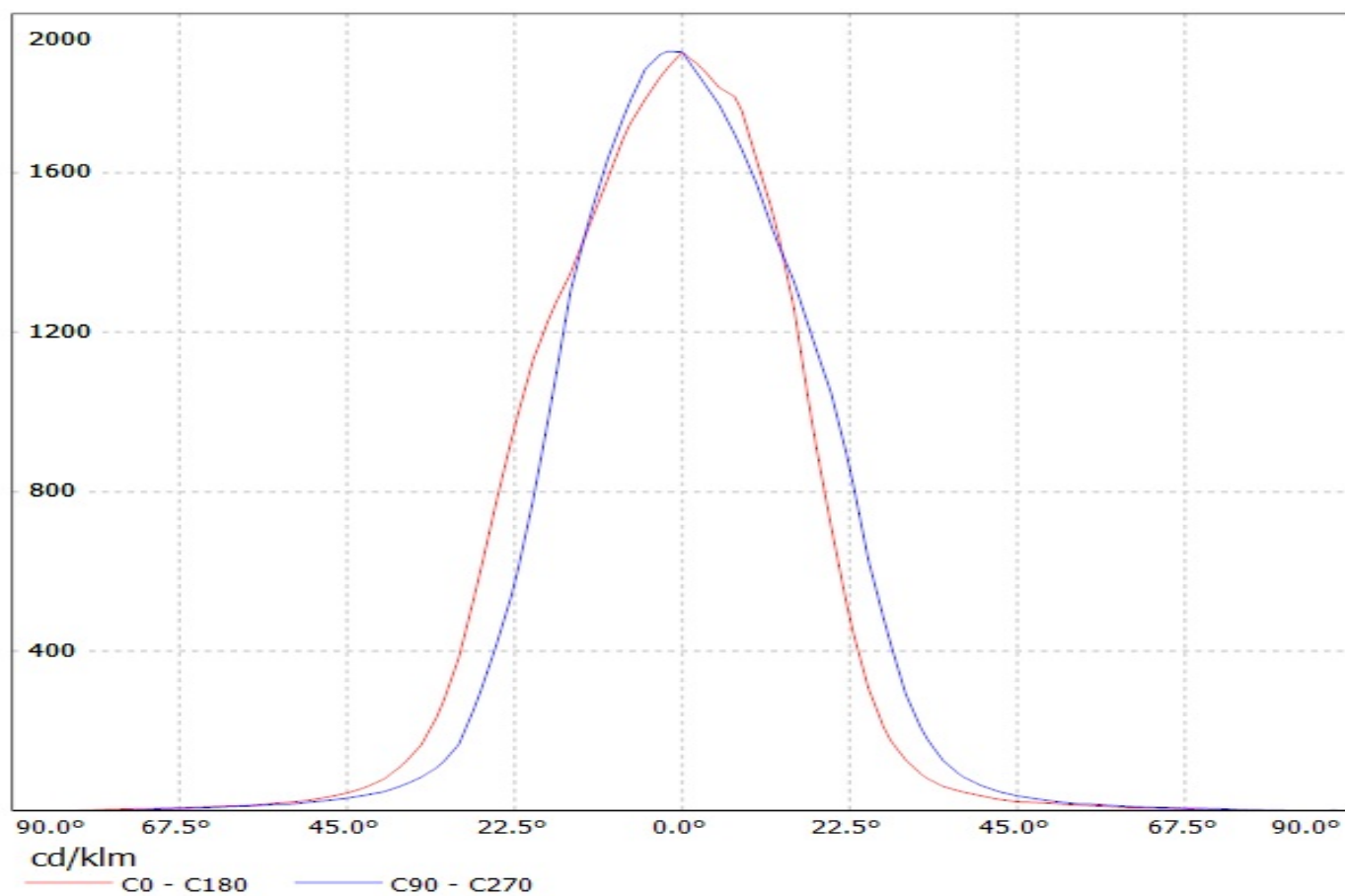
SHEET

1/1

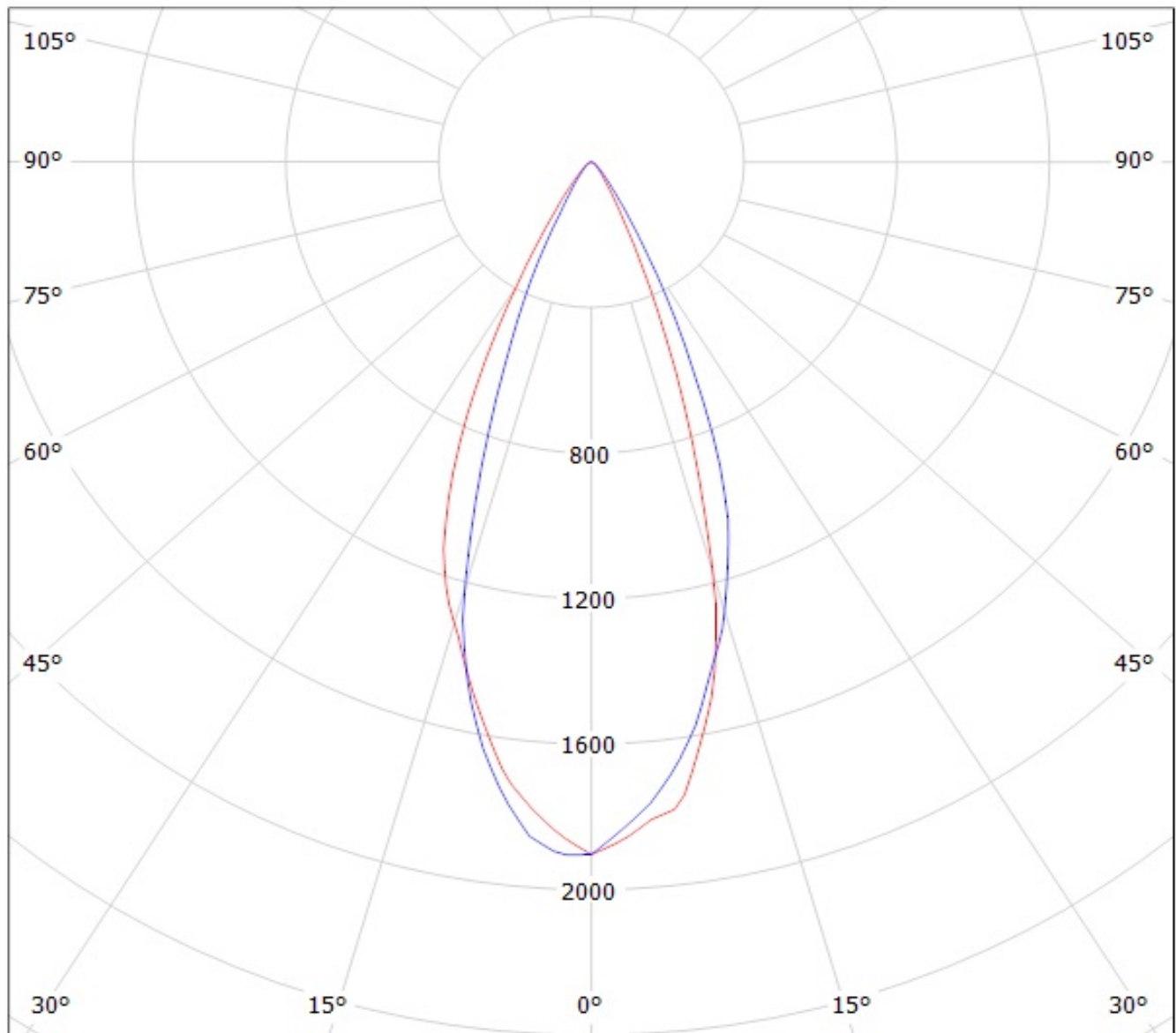
D

A

Luminaire: Ledil Oy CX12568\_Laura-W (Luxeon Rebel 82lm @ 250mA) Efficiency=88%  
Lamps: 1 x Luxeon Rebel 82lm @ 250mA



Luminaire: Ledil Oy CX12568\_Laura-W (Luxeon Rebel 82lm @ 250mA) Efficiency=88%  
Lamps: 1 x Luxeon Rebel 82lm @ 250mA



cd/klm

— C0 - C180

— C90 - C270

**NOTE: The typical divergence will be changed by different color, chip size and chip position tolerance. The typical total divergence is the full angle measured where the luminous intensity is half of the peak value.**