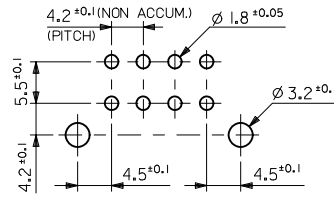
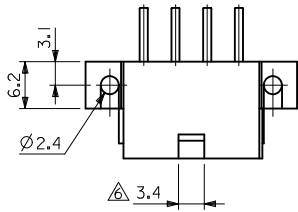


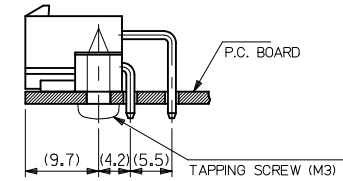
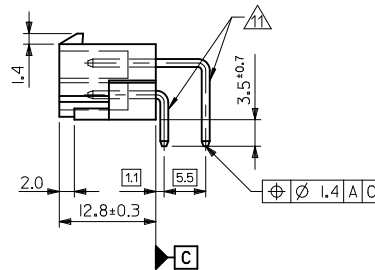
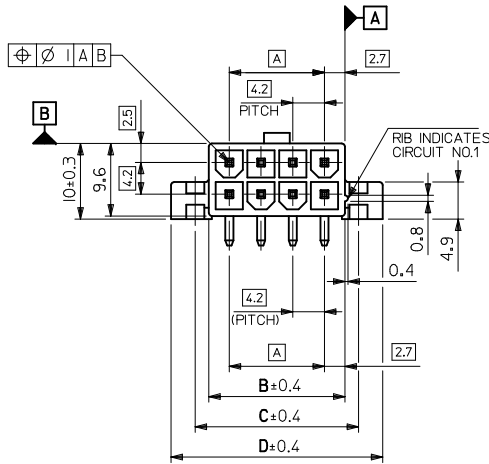
ENG. NO.	HEADER MATERIAL	FINISH OF PIN
5569-NA1-BLM	NYLON 66, UL94V-2, COLOR: BLACK	MATTE TIN 2.54 μm MIN. OVER NICKEL 1.27 μm MIN.

NOTES:

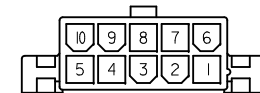
- MATERIAL:
HOUSING MATERIAL: SEE CHART
TERMINAL MATERIAL: BRASS ALLOY
- FINISH: SEE CHART
- PRODUCT SPECIFICATION: PS-5556-001
- PACKAGING SPECIFICATION: TBD
- MATES WITH 5557 SERIES MINIFIT JR RECEPTACLE
- FOR THE 2 CIRCUITS HEADER, THIS DIMENSION IS 4.2 MM
- DISCOLORATION IN THE BANDOLIER CARRIER AREA OF THE PIN IS INHERENT TO THE PLATING PROCESS AND IS DUE TO THE MASKING EFFECT OF THE CARRIER. THIS DISCOLORATION IS IN A NON-FUNCTIONAL AREA OF THE PIN AND WILL NOT AFFECT THE PERFORMANCE OF THE HEADER ASSEMBLY.
- PARTS ARE NOT DESIGNED FOR CURRENT SHARING.
- CONNECTORS ARE NOT TO BE MATED OR UNMATED WHILE CIRCUITS ARE LIVE.
- PART CONFORMS TO CLASS "B" REQUIREMENTS OF COSMETIC SPECIFICATION PS-45499-002.
- FORMING MARKS ON PINS ARE ACCEPTABLE.



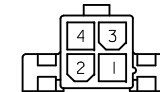
RECOMMENDED PCB HOLE LAYOUT
VIEWED FROM COMPONENT SIDE
1.78 MAX. THICK P.C. BOARD



RECOMMENDED INSTALLATION



10 CKTS.



4 CKTS.

CIRCUIT SIZE LAYOUT
(SCALE 2:1)

32.2	25.8	22.2	16.8	39-31-0109	5569-10A1-BLM	10
19.6	13.2	9.6	4.2	39-31-0049	5569-04A1-BLM	4
D	C	B	A	EDP NO.	ENG. NO.	No. OF CKTS.

CHANGE PLATING EC NO: UCP2012-1560 DRAWN: NGUYEN 2011/10/26 CHKD: JBELL 2011/10/26 APPR: FSMITH 2012/02/02	QUALITY SYMBOLS ▽=0 ▽=0 ▽=0	GENERAL TOLERANCES (UNLESS SPECIFIED)		DIMENSION STYLE MM ONLY		SCALE 2:1	DESIGN UNITS METRIC	THIRD ANGLE PROJECTION	
		mm	INCH	DRAWN BY NGUYEN	DATE 2011/10/25	TITLE MINI FIT JR RIGHT ANGLE HEADER ASSY WITH FLANGES COLORED	MATERIAL NO. SEE TABLE	DOCUMENT NO. SD-5569-NA1-BLM	SHEET NO. 1 OF 1
		4 PLACES	± ---	± ---					
		3 PLACES	± ---	± ---					
		2 PLACES	± 0.2	± ---					
		1 PLACE	± 0.2	± ---					
		ANGULAR ± 3 °							
DRAFT WHERE APPLICABLE MUST REMAIN WITHIN DIMENSIONS		SIZE C		THIS DRAWING CONTAINS INFORMATION THAT IS PROPRIETARY TO MOLEX INCORPORATED AND SHOULD NOT BE USED WITHOUT WRITTEN PERMISSION					