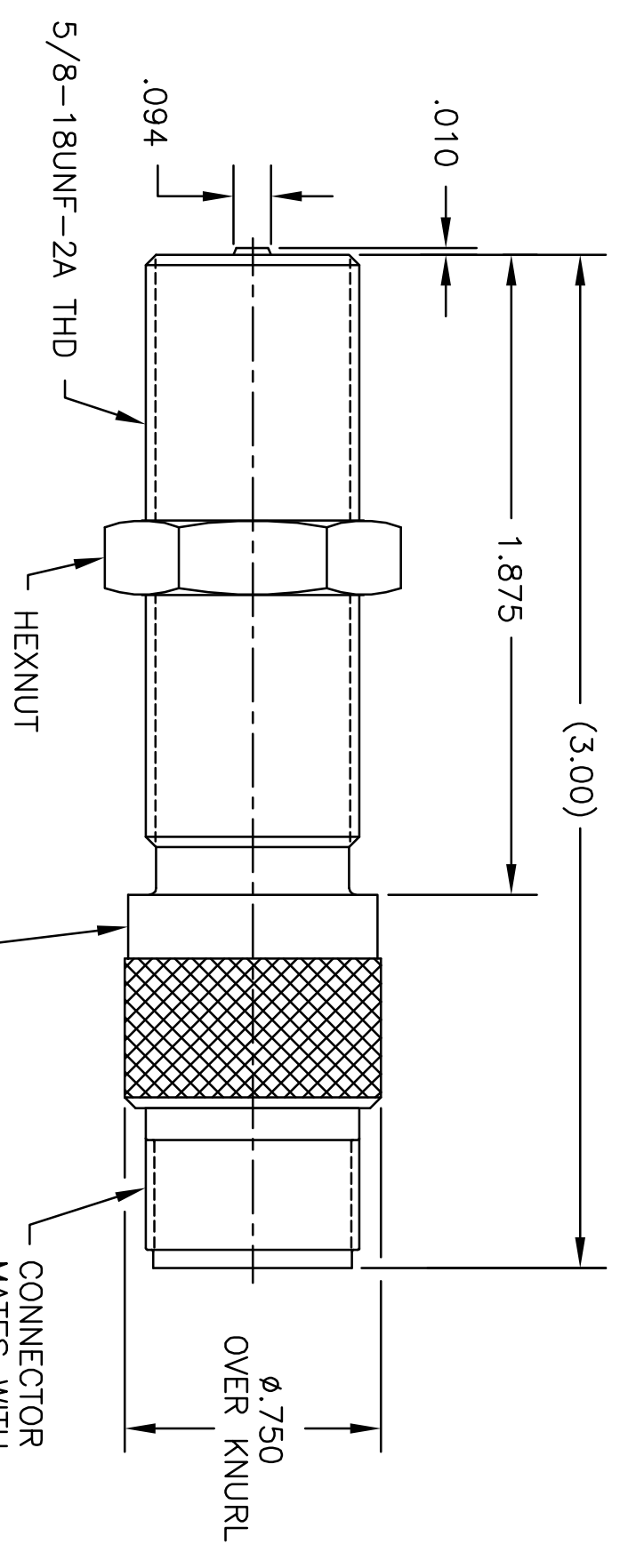


ELECTRICAL CHARACTERISTICS @ 25°C			
PARAMETER	MIN	MAX	UNIT
SUPPLY VOLTAGE	10	30	V
SUPPLY CURRENT	-	24	mA
OUTPUT VOLTAGE LOW	-	600	mV
OUTPUT VOLTAGE HIGH	-	V _{cc}	V
DUTY CYCLE	20	80	%
OPERATING TEMP	-40	80	°C
OPERATING GAP	-	IN	SEE SENSITIVITY CURVES
MAX SINK CURRENT	-	80	mA
FREQUENCY RESPONSE	0	10	KHz
OUTPUT LEAKAGE CURRENT	-	15	nA
REVERSE POLARITY:	30	VDC	V _{cc} = V _{OUT} = 30V
INSTALLATION TORQUE	-	20	FT-LB

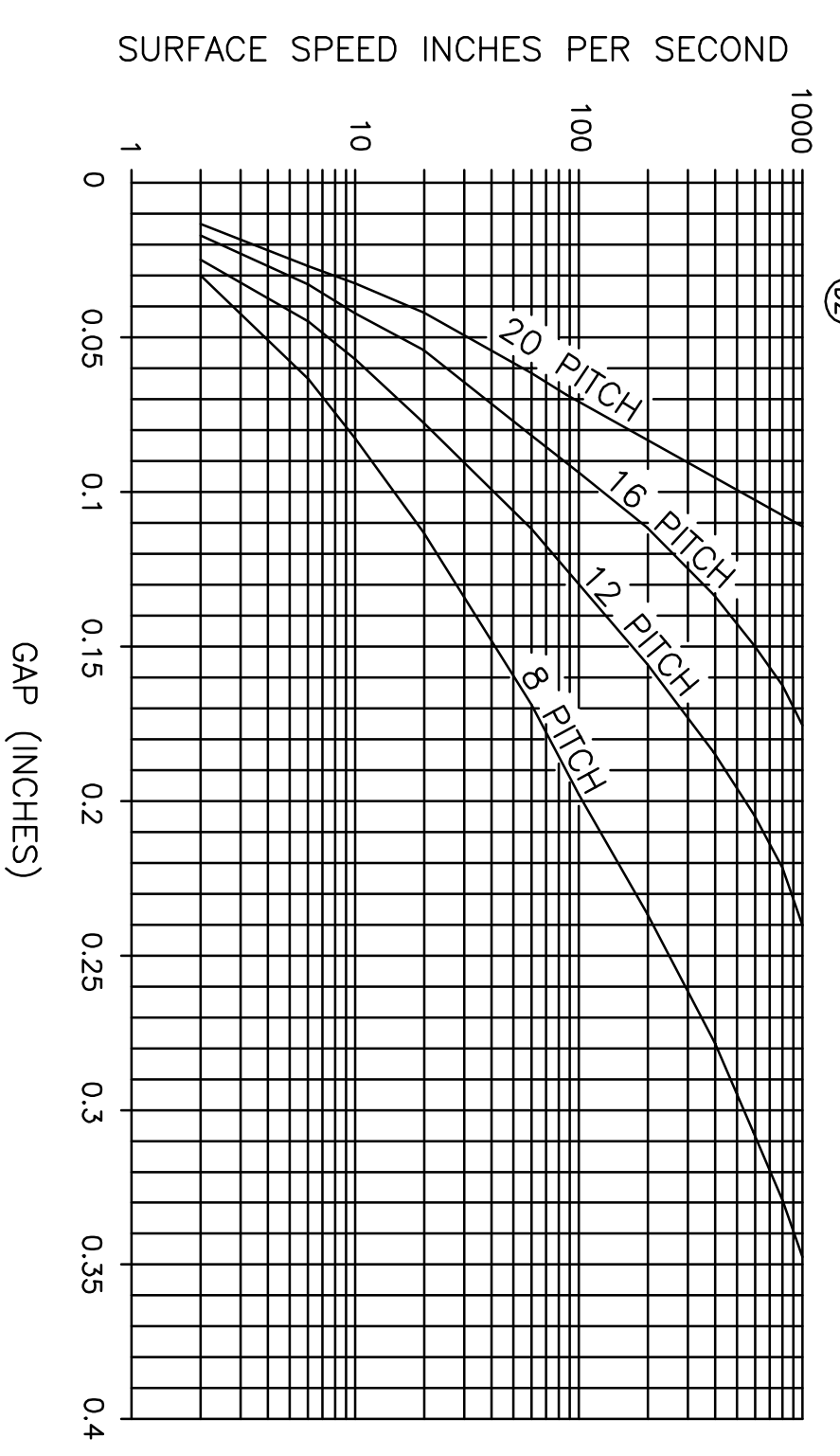
- NOTES:
 1. FINAL TEST 100% & RECORD PER 109486.
 2. FINAL TEST GAP: .110 WITH A 20 PITCH GEAR. (B) (D)

REVISIONS				
ZONE	REV.	DESCRIPTION	DATE	APPROVED
A	1	PRODUCTION RELEASE CNT139251	7/25/95	JJA
B	1	.105 GAP WAS .130 CNT150521	2/9/96	PEP
C	1	DEL PER 109333	5/20/98	QEQ
D1	1	TEST GAP .110 WAS .105 CNT0578	11/10/98	QEQ
D2	1	REVISED SENSITIVITY CURVES		QEQ



PIN A = + SUPPLY
 PIN B = - SUPPLY
 PIN C = OUTPUT

SENSITIVITY CURVES @ ROOM TEMP. (TYPICAL)



MODEL DWG. NO.	58426HV
REV	D
SH	1

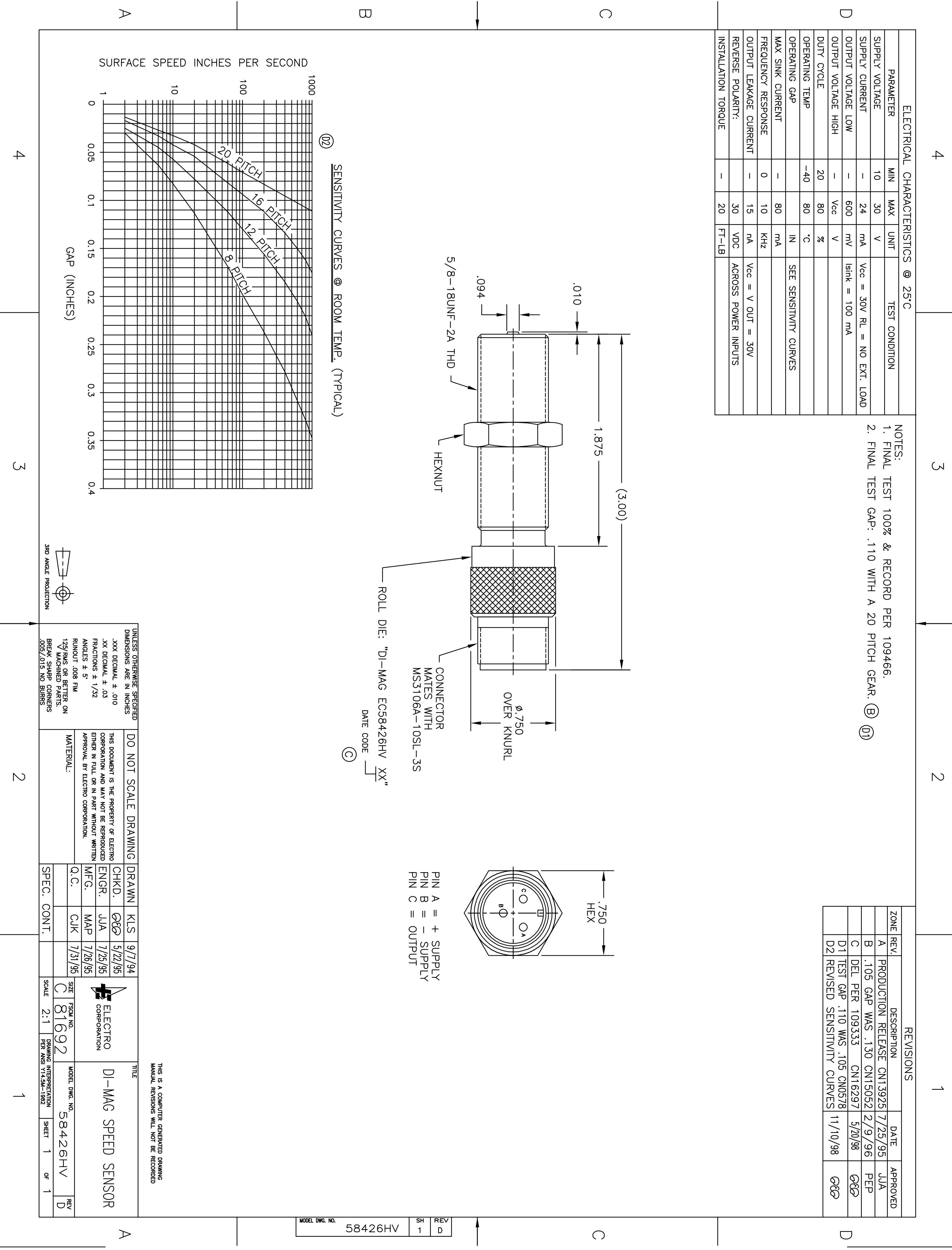
UNLESS OTHERWISE SPECIFIED
 DIMENSIONS ARE IN INCHES
 XX DECIMAL ± .010
 XX FRACTIONS ± .005
 FRACTIONS ± 1/32
 ANGLES ± 5
 ROUNDS TO .008 FIN
 1/2" MACHINED PARTS
 BREAK SHARP CORNERS
 .005/.015 NO BURS

DO NOT SCALE DRAWING	DRAWN	KLS	9/7/94
THIS DOCUMENT IS THE PROPERTY OF ELECTRO CORPORATION AND MAY NOT BE REPRODUCED EITHER IN FULL OR IN PART WITHOUT WRITTEN APPROVAL BY ELECTRO CORPORATION.	CHKD.	QEQ	5/22/95
	ENGR.	JJA	7/29/95
	MFG.	MAP	7/26/95
	Q.C.	CLK	7/31/95
	SPEC. CONT.		

SIZE: FSCM NO. 81692
 SCALE: 2:1
 DRAWING INTERPRETATION PER ANSI Y14.5M-1982

TITLE	DI-MAG SPEED SENSOR
MODEL DWG. NO.	58426HV
SHEET	1 OF 1

THIS IS A COMPUTER GENERATED DRAWING
 MANUAL REVISIONS WILL NOT BE RECORDED



UNCONTROLLED COPY. REVISIONS WILL NOT BE AUTOMATICALLY UPDATED. CONFIRM APPROPRIATE REVISION LEVEL WITH ELECTRO CORPORATION.