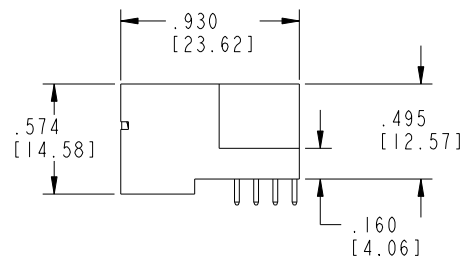
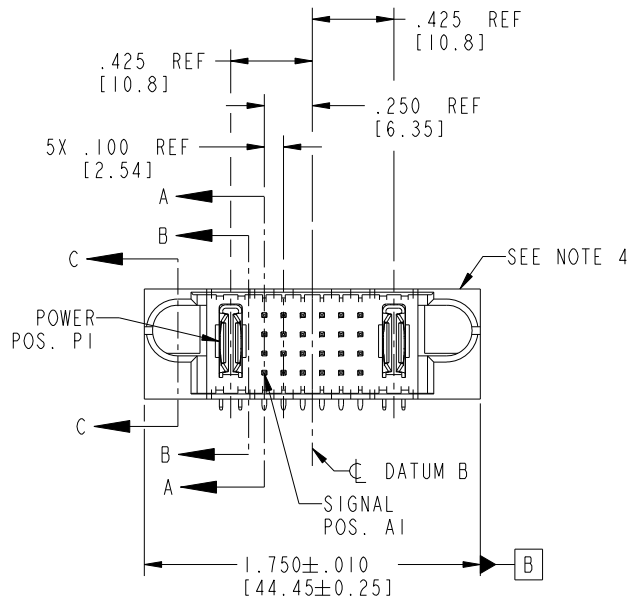
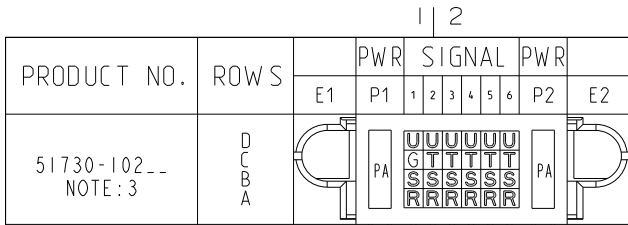


Tous droits strictement réservés. Reproduction ou communication a des tiers interdite sous quelque forme que ce soit sans autorisation écrite du propriétaire. Propriété de c FCI. Droits de reproduction FCI.

All rights strictly reserved. Reproduction or issue to third parties in any form whatever is not permitted without written authority from the proprietor. Property of FCI. Copyright FCI.



CODE	DIM "M" MATING LENGTH	CONTACT TYPE
G	.220 [5.59]	SIGNAL
R	.270 [6.86]	SIGNAL
S	.270 [6.86]	SIGNAL
T	.270 [6.86]	SIGNAL
U	.270 [6.86]	SIGNAL
PA	N/A [N/A]	POWER

mat'l code				SEE NOTE 2		tolerances unless otherwise specified		CUSTOMER		FCI	
ltr	ecn no.	dr	date	linear	.XX±.01/0.X±0.3	projection		COPY		www.fciconnect.com	
A	V04-0880	TAB	09/01/04		.XXX±.005/0.XX±0.13	INCH/MM		title		IP + 24S + IP	
B	DG05-0463	CS	11/14/05	angles	.XXX±.0020/0.XXX±0.051	scale		product family		PwrBlade	
C	DG08-0237	W D	09/01/08		0°±2°	1:1		size		213	
D	DG08-0272	W D	09/25/08	dr	T. BRUNGARD 09/01/04			dwg no		sheet	
				enrg	M. GRAY 09/01/04			A 51730-102		1 of 4	
				chr	M. GRAY 09/01/04						
				appd	M. GRAY 09/01/04						
sheet index	revision sheet	D	D	D	D						
		1	2	3	4						

Pro/E

PDM: Rev:D

STATUS: Released

Printed: Dec 20, 2010

cage code 28536

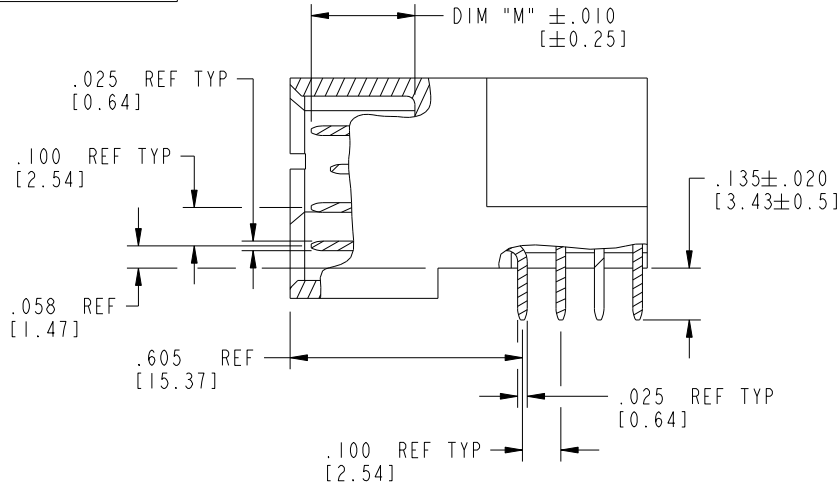
Tous droits strictement réservés. Reproduction ou communication a des tiers interdite sous quelque forme que ce soit sans autorisation écrite du propriétaire. Propriete de c FCI. Droits de reproduction FCI.

All rights strictly reserved. Reproduction or issue to third parties in any form whatever is not permitted without written authority from the proprietor. Property of FCI. Copyright FCI.

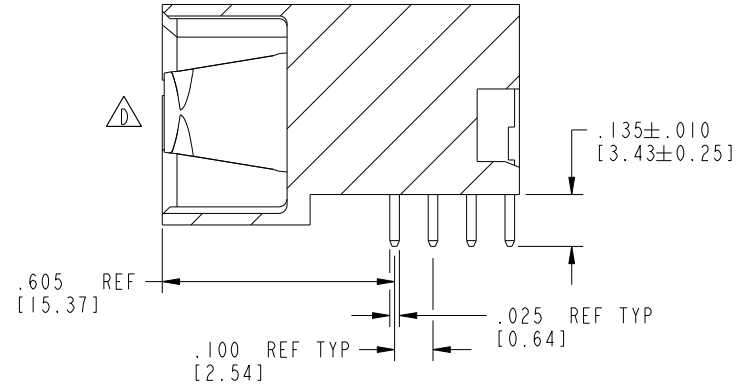


PRODUCT NUMBER

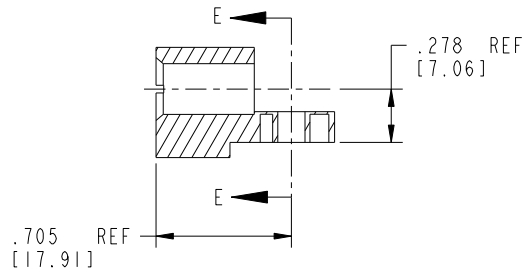
51730-102--
NOTE:3



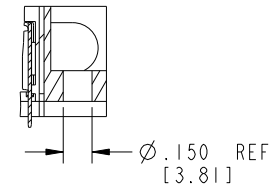
BROKEN-OUT SECTION A-A
SCALE 2:1



SECTION B-B
SCALE 2:1



SECTION C-C



PARTIAL SECTION E-E

mat'l code		SEE NOTE 2		tolerances unless otherwise specified		CUSTOMER		 www.fciconnect.com	
lir	ecn no.	dr	date	linear	.XX±.01/0.X±0.3	COPY		title	
D					.XXY±.005/0.XX±0.13	projection		IP + 24S + IP	
				angles	.XXX±.0020/0.XXX±0.051			RIGHT ANGLE SOLDER HEADER	
					0°±2°			product family	
				dr	T. BRUNGARD 09/01/04	INCH/MM		PwrBlade	
				enr	M. GRAY 09/01/04	scale		code	
				chr	M. GRAY 09/01/04	1:1		213	
				appd	M. GRAY 09/01/04			sheet	
sheet index		revision sheet						2 of 4	
								A 51730-102	

cage code 28516

STAT: Released Printed: Dec 20, 2010

Pro/E

PDM: Rev:D

1 | 2

3 |

4

A

A

B

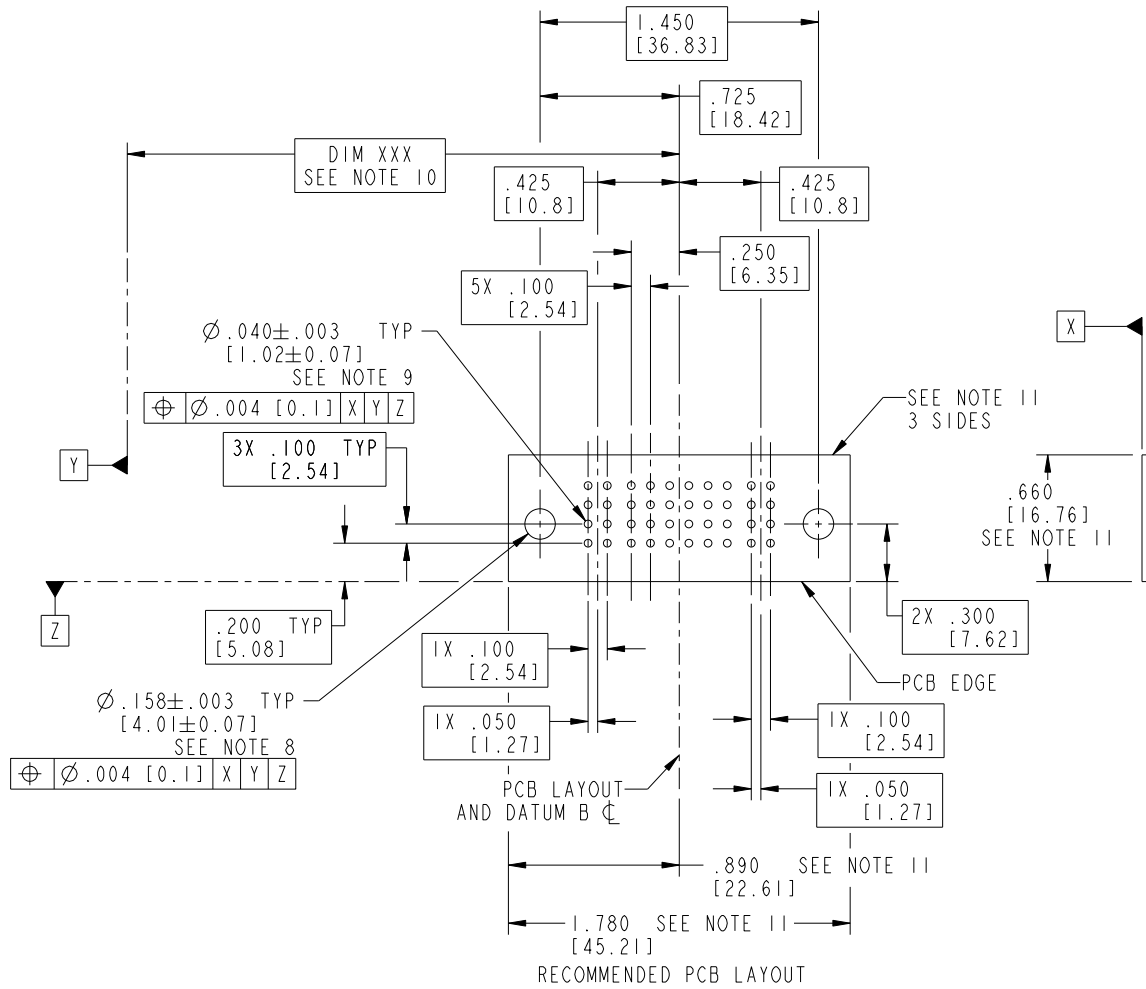
B

Tous droits strictement réservés. Reproduction ou communication a des tiers interdite sous quelque forme que ce soit sans autorisation écrite du propriétaire. Propriété de c FCI. Droits de reproduction FCI.



All rights strictly reserved. Reproduction or issue to third parties in any form whatever is not permitted without written authority from the proprietor. Property of FCI. Copyright FCI.

PRODUCT NUMBER
51730-102--
NOTE:3



mat'l code		SEE NOTE 2		tolerances unless otherwise specified		CUSTOMER		 www.fciconnect.com	
ltr	ecn no.	dr	date	linear	.XX±.01/0.X±0.3	COPY		title	
D				angles	.XXY±.005/0.XX±0.13	projection		IP + 24S + IP	
					.XXX±.002/0.XXX±0.051			RIGHT ANGLE SOLDER HEADER	
				dr	0°±2°	INCH/MM		product family	
				enrg	T. BRUNGARD 09/01/04	scale		PwrBlade	
				chr	M. GRAY 09/01/04	1:1		code	
				appd	M. GRAY 09/01/04			213	
sheet index	revision sheet							size	
								dwg no	
								A 51730-102	
								sheet	
								3 of 4	

Pro/E

PDM: Rev: D

STATUS: Released

Printed: Dec 20, 2010

cage code 28536



1 | 2

3 |

4

PRODUCT NUMBER
51730-102--
NOTE: 3

NOTES:

1. DIMENSIONS AND TOLERANCES ARE IN ACCORDANCE WITH ASME Y14.5M, 1994 UNLESS OTHERWISE SPECIFIED.

CONNECTOR NOTES:

2. HOUSING MATERIAL: UL 94 V-0 GLASS FILLED HIGH-TEMP THERMOPLASTIC
POWER CONTACT MATERIAL: COPPER ALLOY
SIGNAL PIN MATERIAL: COPPER ALLOY

3. SEE ITEM 1 & 2 IN PRINT 10064183 FOR PLATING SPEC OF 51730-102 AND 51730-102LF RESPECTIVELY.

4. MANUFACTURER'S NAME, P/N, AND DATE CODE TO APPEAR ON THIS SURFACE.

5. PRODUCT SPECIFICATION GS-12-149.
APPLICATION SPECIFICATION BUS-20-067.

6. PACKAGED IN TRAYS.

PCB NOTES:

7. ALL HOLE DIAMETERS ARE FINISHED HOLE SIZE.

8. MOUNTING HOLES, WHERE APPLICABLE, ARE UNPLATED.

9. $\varnothing .0453 \pm .0010$ [1.151 \pm 0.025] DRILLED HOLES PLATED WITH .0003 [0.008] MIN SnPb OVER .001 [0.03] TO .003 [0.08] Cu PLATING TO ACHIEVE $\varnothing .040 \pm .003$ [1.02 \pm .07] HOLE.

10. "DIM XXX" TO BE DETERMINED BY THE CUSTOMER.

11. CONNECTOR KEEP-OUT ZONE.

12. A \triangle SYMBOL WILL BE NEXT TO ANY DIMENSION, VIEW, OR NOTE WHICH HAS BEEN MODIFIED WITH THE CURRENT DRAWING REVISION.

mat'l code				SEE NOTE 2		tolerances unless otherwise specified		CUSTOMER		FCI	
ltr	ecn no.	dr	date	linear	.XX \pm .01 / 0.X \pm 0.3	projection	COPY		www.fciconnect.com		
D				angles	.XXX \pm .005 / 0.XX \pm 0.13 .XXX \pm .0020 / 0.XXX \pm 0.051 0° \pm 2°		title		IP + 24S + IP		
				dr	T. BRUNGARD 09/01/04		product family		PwrBlade		
				enrg	M. GRAY 09/01/04	INCH/MM	size	dwg no	213		
				chr	M. GRAY 09/01/04	scale	A	51730-102	sheet		
				appd	M. GRAY 09/01/04	1:1			4 of 4		
sheet index		revision sheet									

A

A

B

B

1 | 2

Pro/E

PDM: Rev:D

STATUS: Released

Printed: Dec 20, 2010

cage code 28556

4