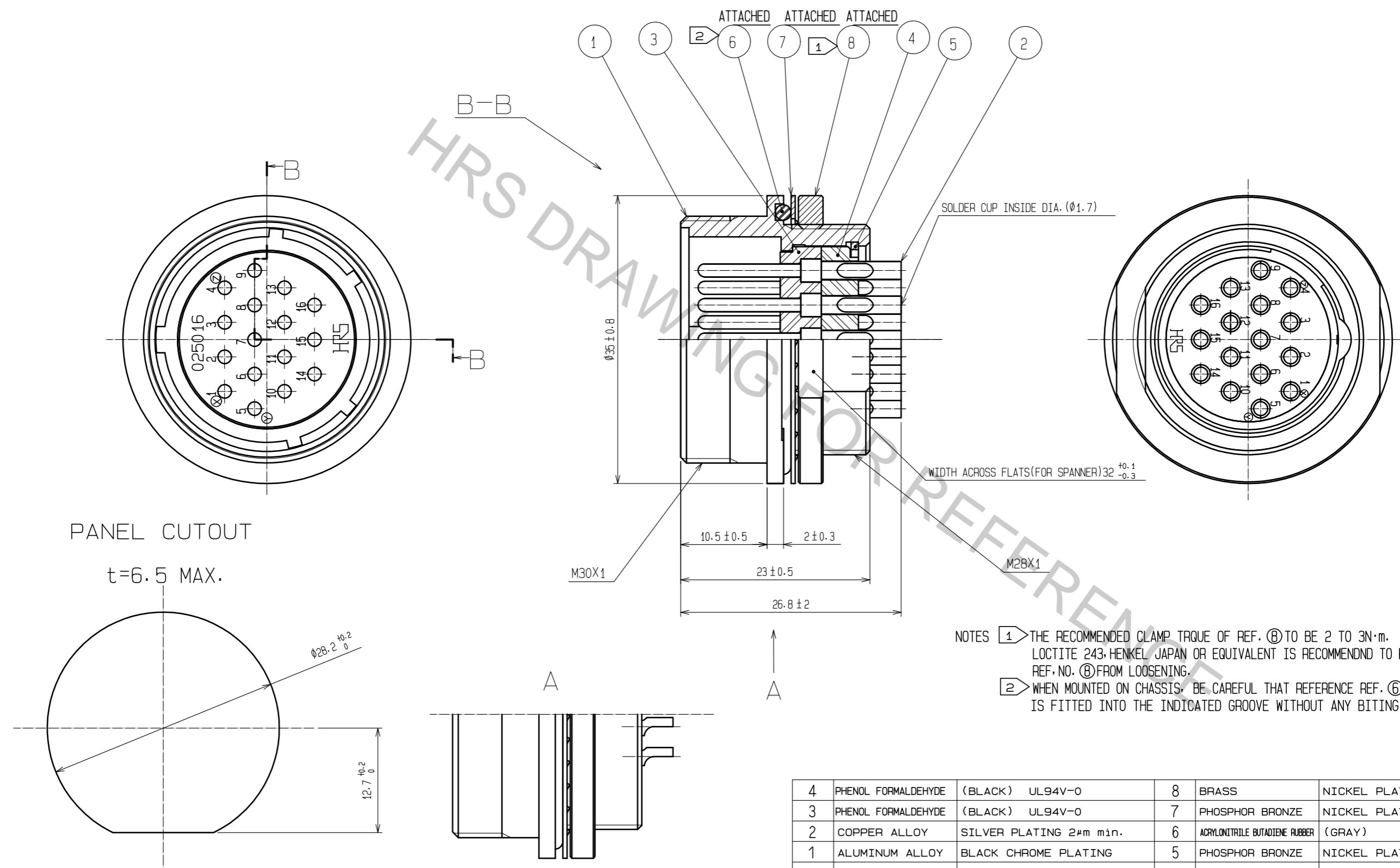


Aug.1.2018 Copyright 2018 HIROSE ELECTRIC CO., LTD. All Rights Reserved.  
 In case that the application demands a high level of reliability, such as automotive,  
 please contact a company representative for further information.



NOTES ① THE RECOMMENDED CLAMP TORQUE OF REF. ⑧ TO BE 2 TO 3N·m.  
 LOCTITE 243, HENKEL JAPAN OR EQUIVALENT IS RECOMMENDD TO PREVENT  
 REF.NO. ⑧ FROM LOOSENING.  
 ② WHEN MOUNTED ON CHASSIS, BE CAREFUL THAT REFERENCE REF. ⑥  
 IS FITTED INTO THE INDICATED GROOVE WITHOUT ANY BITING.

4	PHENOL FORMALDEHYDE	(BLACK) UL94V-0	8	BRASS	NICKEL PLATING	
3	PHENOL FORMALDEHYDE	(BLACK) UL94V-0	7	PHOSPHOR BRONZE	NICKEL PLATING	
2	COPPER ALLOY	SILVER PLATING 2μm min.	6	ACRYLONITRILE BUTADIENE RUBBER	(GRAY)	
1	ALUMINUM ALLOY	BLACK CHROME PLATING	5	PHOSPHOR BRONZE	NICKEL PLATING	
NO.	MATERIAL	FINISH . REMARKS	NO.	MATERIAL	FINISH . REMARKS	
UNITS		SCALE	COUNT	DESCRIPTION OF REVISIONS		
mm		2 : 1	△	DESIGNED	CHECKED	
HIROSE ELECTRIC CO., LTD.		APPROVED	HY. KOBAYASHI	18.02.22	DRAWING NO. EDC-021937-31-00	
		CHECKED	HY. KOBAYASHI	18.02.22		PART NO. JRC25WRG-16P(31)
		DESIGNED	TH. KAMEYA	18.02.22	CODE NO. CL114-1032-3-31	1/1
		DRAWN	TH. KAMEYA	18.02.22		