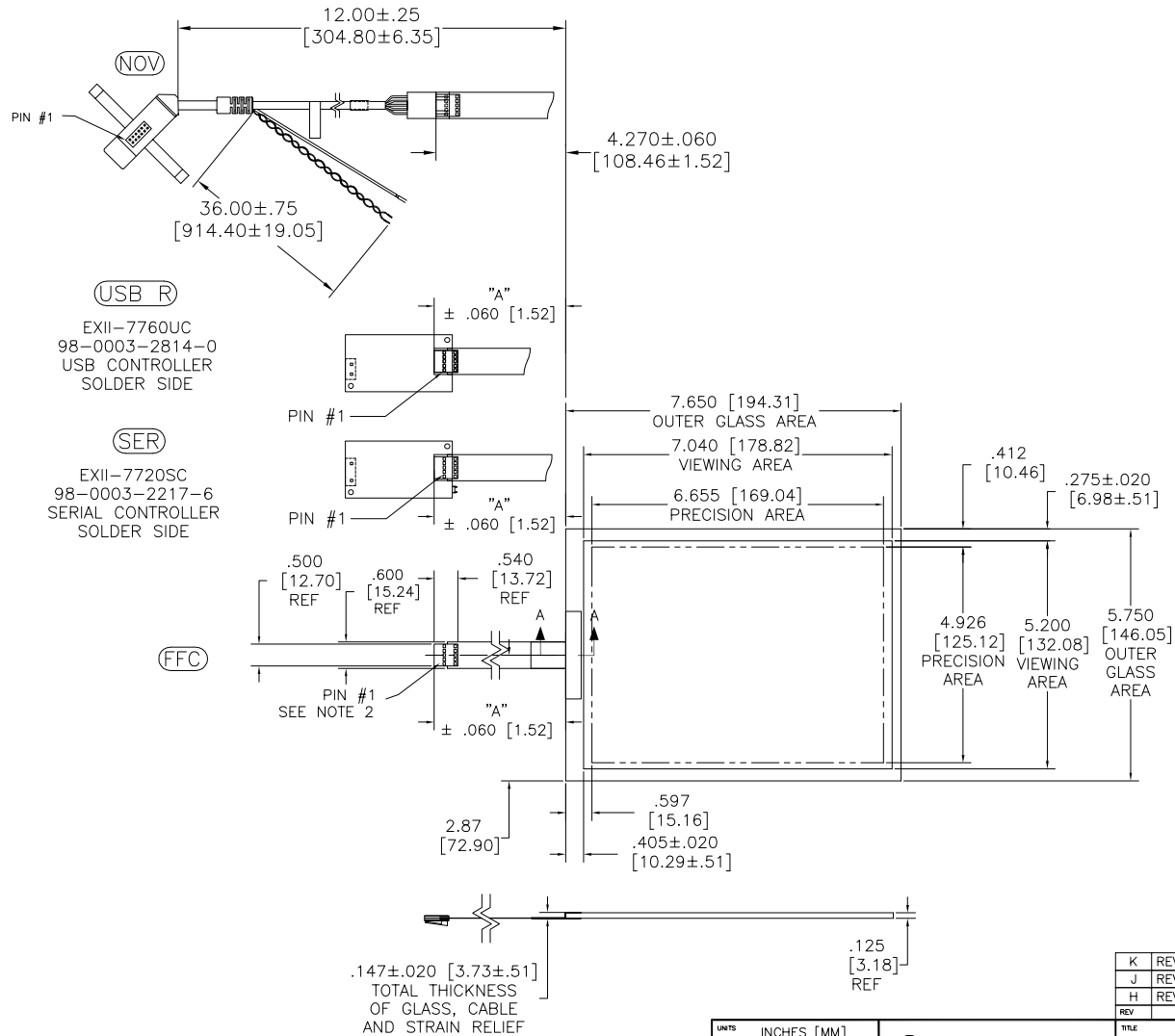


TOP LEVEL NUMBER	US NUMBER	TYPE	DIM "A" (TOTAL GLASS TO CONNECTOR)	A/G FINISH	PROD SPEC
17-8921-203	98-0003-2669-8	FFC	4.27" [108.46]	AG500	23655
17-8921-221	98-0003-2672-2	SER	4.27" [108.46]	AG500	23655
17-8921-206	98-0003-2670-6	NOV	SEE DWG	AG500	23655
N/A	98-0003-3505-3	USB	4.27" [108.46]	AG500	23655

OGA DIAGONAL: 9.57 [243.08]
VA DIAGONAL: 8.75 [222.31]
PA DIAGONAL: 8.28 [210.31]



ESD CLAMSHELL CASE IS USED WITH ALL NOV, USB AND SER TERMINATIONS.



NOTES:

- WEIGHT OF GLASS IN GRAMS: 216 ±10%
- NICOMATIC HOUSING P/N: OLO5
NICOMATIC RECEPTACLES (PINS) MATTE TIN PLATED P/N: 14106-12
HOUSING ORIENTED WITH LATCH DOWN

PINOUT	
1	LR
2	LL
3	SHLD
4	UL
5	UR

UNITS INCHES [MM]

TOLERANCES UNLESS OTHERWISE SPECIFIED

.X ±

.XX ±.03 [.76]

.XXX ±.015 [.38]

ANGLES ±1°

THIRD ANGLE PROJECTION

DO NOT SCALE DRAWING

SCALE 1 = 1

3M 3M TOUCH SYSTEMS
METHUEN, MA
USA

© COPYRIGHT 2004
THIS DOCUMENT IS COPYRIGHTED PROPERTY OF THE 3M COMPANY AND MAY NOT BE REPRODUCED WITHOUT 3M WRITTEN PERMISSION OR USED OR DISCLOSED FOR OTHER THAN 3M AUTHORIZED PURPOSES.

DRAWN AVO 10/11/05

K	REVISED PER CO 036256	4/13	SB
J	REVISED PER CO 033533	11/11	SB
H	REVISED PER CO 033535	9/11	SEB
REV	CHANGE NOTICE	DATE	DRW

TITLE

MARKETING DRAWING
SCT32NN 8.75"

CAD FORMAT AUTOCAD SHEET 1 OF 1

SIZE C DOCUMENT NO. 28710-MKT REV K