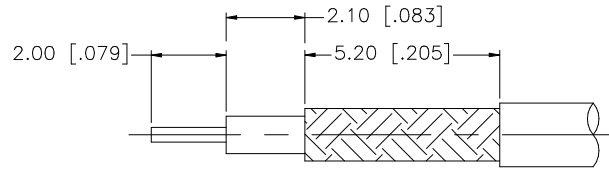
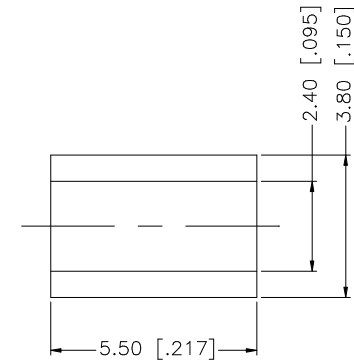
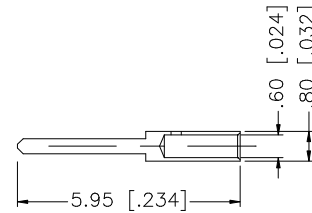
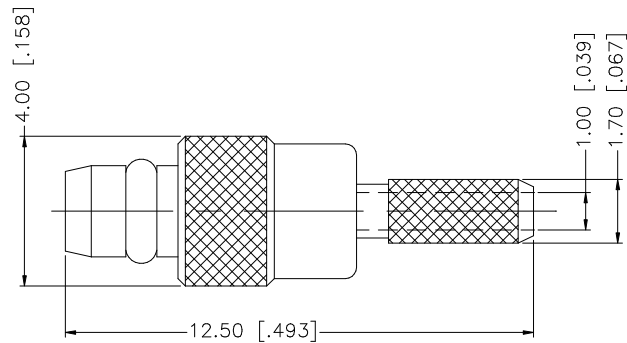


REV.	DATE	DESCRIPTION
NC	05/06/99	INITIAL RELEASE
A	11/06/06	UPDATE DRAWING FORMAT



RECOMMENDED CABLE
STRIPPING DIM'S.



8				
7				
6	FERRULE	COPPER	GOLD	1
5	RETAINER RING	PHOS. BRONZE	GOLD	1
4	BARREL	BRASS	GOLD	1
3	CONTACT PIN	BRASS	GOLD	1
2	INSULATOR	TEFLON	NATURAL	1
1	BODY	BRASS	GOLD	1
	DESCRIPTION	MATERIAL	FINISH	QTY

UNLESS OTHERWISE SPECIFIED DIMENSIONS ARE IN MILLIMETERS. DIMENSIONS IN [] ARE IN INCHES AND FOR CUSTOMER REFERENCE ONLY.

UNLESS OTHERWISE SPECIFIED TOLERANCES FOR MILLIMETERS ARE:
0.5 - 8mm ± 0.20mm
8 - 30mm ± 0.40mm
30 - 120mm ± 0.50mm

UNLESS OTHERWISE SPECIFIED TOLERANCES FOR INCHES ARE:
.020 - .315 = ± 0.007"
.315 - 1.180 = ± 0.015"
1.180 - 4.724 = ± 0.020"

DO NOT SCALE DRAWING

APPROVALS	DATE
DRAWN G.R.S.	11/06/06
CHECKED	
ISSUED	
SHEET 1 OF 1	
CAD FILE	C:/262/262100.DWG

Amphenol Connex

PART DESCRIPTION

MMCX CRIMP PLUG
(FOR RG-178B/U, 196A/U CABLE)

PART NO.

262100

DWG. NO.

262100.DWG

REV. A

SIZE A

SCALE NA