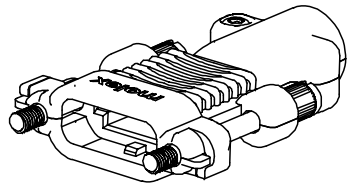
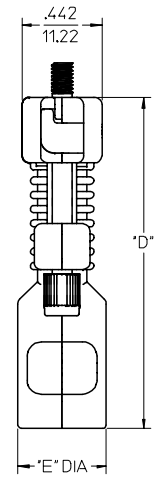
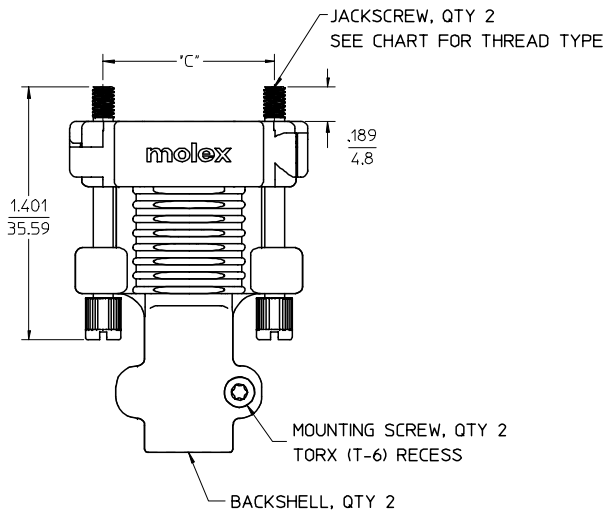
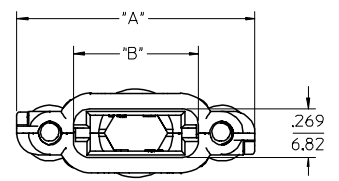


CKT SIZE	"A" DIM	"B" DIM	"C" DIM	"D" DIM	"E" DIM	CABLE OD
18	1.320/33.55	.691/17.56	.950/24.13	1.835/46.62	.490/12.45	.310/7.87
28	1.570/39.90	.941/23.91	1.200/30.48	1.835/46.62	.490/12.45	.335/8.51
38	1.820/46.25	1.191/30.26	1.450/36.83	2.270/57.65	.490/12.45	.355/9.02
48	2.070/52.60	1.441/36.61	1.700/43.18	2.478/62.93	.569/14.45	.440/11.18
72	2.670/67.84	2.041/51.85	2.300/58.42	2.741/69.62	.726/18.45	.635/16.13

- NOTES:
1. MATERIALS:
 BACKSHELL - ZINC ALLOY DIE CAST, FINISH DULL NICKEL PLATING.
 JACKSCREW - STAINLESS STEEL, FINISH PASSIVATE.
 MOUNTING SCREW - STEEL ALLOY, FINISH CLEAR ZINC PLATING.
 2. PLUG CABLE KIT COMPONENTS TO BE BULK PACKAGED PER PK-75115-991.
 3. MOUNTING SCREW APPLICATION TORQUE TO BE MIN. 3 lbf-in AND NOT TO EXCEED 4 lbf-in.
 5. STRAIN RELIEF IS DESIGNED FOR THE CABLE DIAMETER SPECIFIED IN TABLE ON THIS PAGE.
 WHEN USING SMALLER CABLE DIAMETER, USE HEAT SHRINK TUBING TO BUILD UP THE CABLE TO THE SPECIFIED DIAMETER.



18 CKT PLUG CABLE KIT



PLUG CABLE KIT (4-40 JACKSCREW)	PLUG CABLE KIT (M3 JACKSCREW)	CIRCUIT SIZE	NOT TOOLED	
75115-2072	75115-3072	72	X	CONTACT PRODUCT MARKETING
75115-2048	75115-3048	48		
75115-2038	75115-3038	38	X	CONTACT PRODUCT MARKETING
75115-2028	75115-3028	28		
75115-2018	75115-3018	18		

MOD JACKSCREW MATERIAL EC NO: UCP2007-1309 DRWN:MSIBARRA2007/02/27 CHKD:DMORGAN2007/03/05 APPR:SMILLER 2007/03/06	DESCRIPTION REV C	QUALITY SYMBOLS ▽=0 ◻=0	GENERAL TOLERANCES (UNLESS SPECIFIED) 4 PLACES ± --- ± --- 3 PLACES ± --- ±.010 2 PLACES ±0.25 ± --- 1 PLACE ± --- ± --- ANGULAR ±1/2° DRAFT WHERE APPLICABLE MUST REMAIN WITHIN DIMENSIONS	SCALE 2:1 DESIGN UNITS METRIC DIMENSION STYLE IN/MM	THIRD ANGLE PROJECTION REVISE ON CAD ONLY	TITLE SALES DRAWING TDP PLUG CABLE KIT DULL NICKEL FINISH MOLEX INCORPORATED MATERIAL NO. SEE CHART DOCUMENT NO. SD-75115-002 SHEET NO. 1 OF 1	
		DRAWN BY DATE TMCCLELL 02/11/06	CHECKED BY DATE TMCCLELL 02/11/07	APPROVED BY DATE BANAKIS 02/11/07	THIS DRAWING CONTAINS INFORMATION THAT IS PROPRIETARY TO MOLEX INCORPORATED AND SHOULD NOT BE USED WITHOUT WRITTEN PERMISSION		
					DIMENSION STYLE IN/MM		TITLE SALES DRAWING TDP PLUG CABLE KIT DULL NICKEL FINISH
					APPROVED BY DATE BANAKIS 02/11/07		MATERIAL NO. SEE CHART DOCUMENT NO. SD-75115-002 SHEET NO. 1 OF 1