

ITEM	PART#	DESCRIPTION	QTY	UOM
A	1722563105	ULTRA-FIT HSG SR 5ckt Bk	1	PC
B	1722643005	ULTRA-FIT TPA 5ckt Bk	1	PC
C	1722537023	ULTRA-FIT CRIMP TERM 16-18 TIN Pre-P	5	PC
D	--	PAPER PRINTED PAPER WHITE	1	PC

FROM	TO	DESCRIPTION	COLOR
A1	--	1X16AWG DISC SR-PVC BK UL1061 HKUP	BLACK
A2	--	1X16AWG DISC SR-PVC BK UL1061 HKUP	BLACK
A3	--	1X16AWG DISC SR-PVC BK UL1061 HKUP	BLACK
A4	--	1X16AWG DISC SR-PVC BK UL1061 HKUP	BLACK
A5	--	1X16AWG DISC SR-PVC BK UL1061 HKUP	BLACK

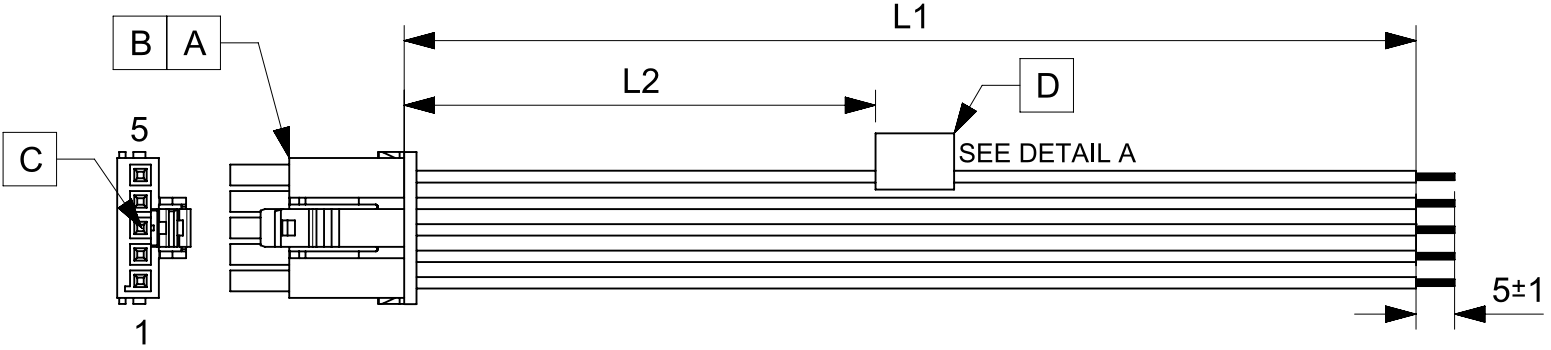


TABLE			
PART NUMBER	L1	L2	TITLE
2174661051	150±8	63 REF	ULTRA-FIT SR R-S 5CKT 150MM DISC Sn
2174661052	300±10	138 REF	ULTRA-FIT SR R-S 5CKT 300MM DISC Sn
2174661053	600±10	288 REF	ULTRA-FIT SR R-S 5CKT 600MM DISC Sn

NOTES

1. Connector view shown is from mating side.
2. Free ends must be stripped, twisted & tinned. The length of tinning is 5±1mm. Tinning dia must be 1.9mm Max.
3. Label text must be 2mm max. in height with Arial font.
4. Label must be wrapped in Flag type on a single cable.

MOLEX P/N
MOLEX
BATCH WK/YR

DETAIL A

REVISION			
DATE	REV	DESCRIPTION	CHANGER
15/01/2021	A	INITIAL RELEASE	ARAJU

THIS DRAWING CONTAINS INFORMATION THAT IS PROPRIETARY TO MOLEX ELECTRONIC TECHNOLOGIES, LLC AND SHOULD NOT BE USED WITHOUT WRITTEN PERMISSION												
FUNCTIONAL SYMBOLS FA = 0 FE = 0 FP = 0	DIMENSION UNITS	SCALE	CURRENT REV DESC:									
	mm	NTS	EC NO: 653686 DRWN: ARAJU 2020/11/16 CHK'D: RDESAI01 2021/01/22 APPR: RDESAI01 2021/01/22									
DIVISIONAL SYMBOLS	GENERAL TOLERANCES (UNLESS SPECIFIED)		INITIAL REVISION:									
	ANGULAR TOL	± °	DRWN: ARAJU 2020/11/16 APPR: RDESAI01 2021/01/22									
4 PLACES	±	DOCUMENT NUMBER										
3 PLACES	±	2174661051										
2 PLACES	±	DRAFT WHERE APPLICABLE MUST REMAIN WITHIN DIMENSIONS			THIRD ANGLE PROJECTION	DRAWING	SERIES	MATERIAL NUMBER	CUSTOMER	DOC TYPE	DOC PART	REVISION
1 PLACE	±				A4-SIZE	217466	SEE TABLE	GENERAL MARKET	PSD	000	A	
0 PLACES	±											
SHEET NUMBER: 1 OF 1												

RELEASE STATUS	P1	RELEASE DATE	2021/01/22	06:05:25
----------------	----	--------------	------------	----------