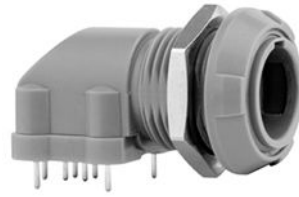


## SUMMARY

### # Wires

Low	5
High	0
Coax	0
Triax	0
Quad	0
Fiber	0
Fluidic	0



*Image is for illustrative purpose only*

### Download

[Request a quote](#)

[Catalog](#)

Series	P
Termination type	Female print PCB
IP rating	50
Cable Ø	0.00 - 0.00 mm
Matching parts	
Status	
Alternative part	

## TECHNICAL DETAILS

### Mechanics

Shell Style/Model	PX*: Elbow receptacle key (G) or keys (A,B,C) with two nuts for printed circuit
Keying	2 keys (alpha=40; Plug: male contacts; Receptacle: female contacts)
Housing Material	PSU (Polysulfone), gray
Cable Fixing	∅ 0 - 0 mm
Variant	A : Blue front nut

### Performance

Configuration	1P.M05 : 5 Low Voltage
Insulator	
Rated Current	7 Amps

### Specifications

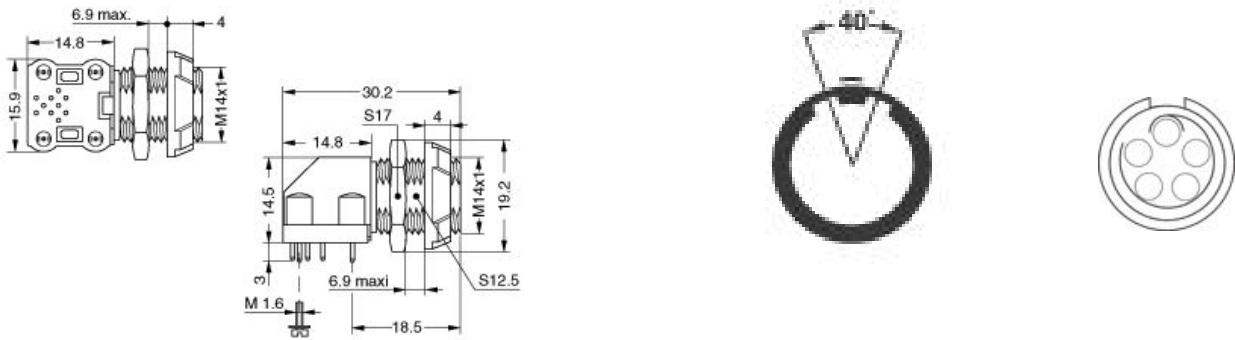
Contact Type: Print (straight)
Max. Matings: 2000
Contact Dia.: 0.9 mm (0.0354in)
R (max): 4.5 mOhm
Test voltage (kV rms) Contact-contact: 1.05
Air clearance min. (mm) or Creepage distance min. (mm): 0.8

## Others

F ret (min): 50 N  
F ret (max): 150 N  
IP Rating: 50

# DRAWINGS

## Draws



## Dimensions

	A	E	L	S1	S2	e
mm.	19.2	6.9 max	30.2	S12.5	S17	M14x1
in.	0,76	0,27	1,19			

# RECOMMENDED BY LEMO

## Tools

None

## Cables