

TABLE 1: DIGIT 6  
CABLE TYPE OPTIONS

1	LEONI STÜDER BETAFLAM (TÜV - 224803)
2	LEONI STÜDER BETAFLAM (TÜV & UL - 224780)

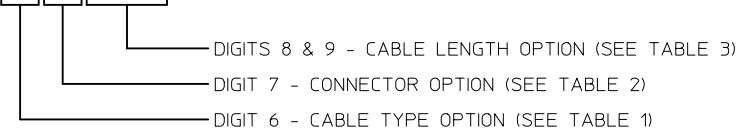
TABLE 2: DIGIT 7  
CONNECTOR TYPE OPTIONS

1	SINGLE ENDED, NEGATIVE (MALE)
2	SINGLE ENDED, POSITIVE (FEMALE)

TABLE 3: DIGITS 8 & 9  
CABLE LENGTH (L) PRE-STRIP LENGTH (B)

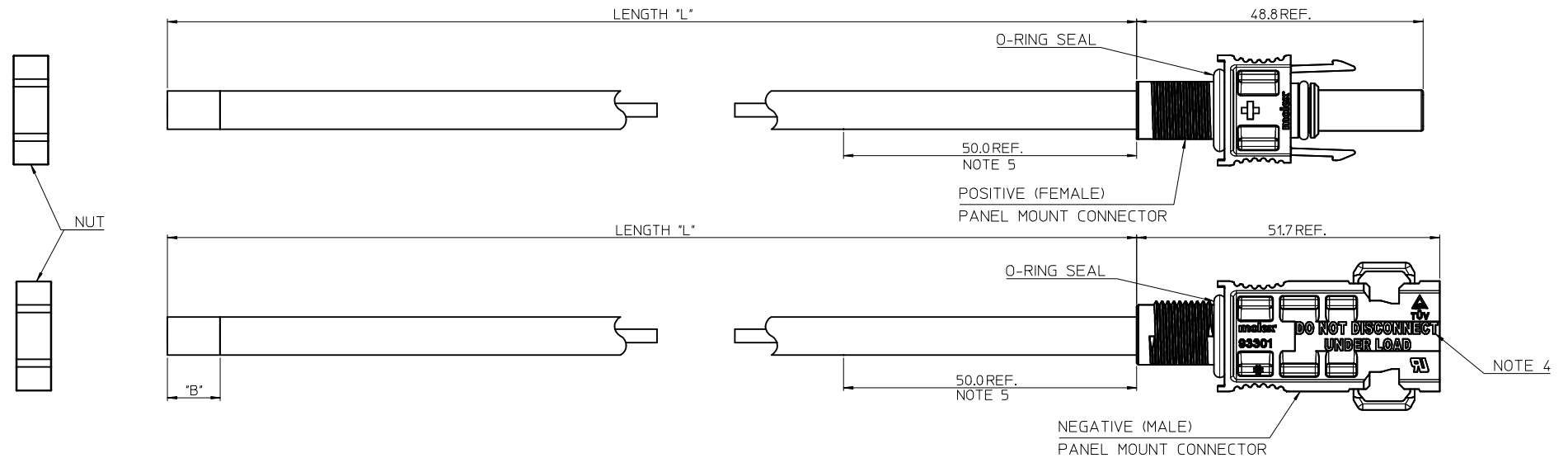
01	0.025m (25mm) +15mm/-0mm	6mm ±1mm
----	--------------------------	----------

93457-XXXX



HOW TO SELECT CABLE ASSEMBLY

1. CHOOSE YOUR PREFERRED CABLE TYPE FROM TABLE 1
2. CHOOSE EITHER POSITIVE OR NEGATIVE PANEL MOUNT DC CONNECTORS FROM TABLE 2
3. CHOOSE YOUR CABLE LENGTH FROM TABLE 3
4. CREATE YOUR PART NUMBER BY SUBSTITUTING THE APPROPRIATE NUMBERS FOR XXXX



- NOTES:
1. SEE TABLE 1 FOR AVAILABLE CABLE TYPES.
  2. CABLE ENDS WILL BE SUPPLIED PARTIALLY PRE-STRIPPED.
  3. ALL CONNECTORS ARE MOLEX DC PANEL MOUNT CONNECTORS (INDUSTRY STANDARD COMPATIBLE). SEE SD-93301-001 FOR CONNECTOR DETAILS.
  4. DISCONNECTION WARNING EMBOSSED ONTO PLASTIC HOUSING OF NEGATIVE (MALE) CONNECTOR.
  5. TO PREVENT DAMAGE TO THE ELECTRICAL CONNECTION AVOID BENDING OF THE CABLE WITHIN THIS DIMENSION OF THE CONNECTOR.
  6. PRODUCT SPECIFICATION: TBC
  7. PACKAGING SPECIFICATION: TBC
  8. MODEL: EM-93457-010

ORIGINAL RELEASE EC NO: IPG2013-1727 DRWN: SMCREEVY 2013/04/19 CHKD: MSHANAHAN 2013/05/09 APPR: STGRIFFIN 2013/05/22	QUALITY SYMBOLS ▽=0 ▽=0	GENERAL TOLERANCES (UNLESS SPECIFIED)		DIMENSION STYLE MM ONLY		SCALE 2:1	DESIGN UNITS METRIC	THIRD ANGLE PROJECTION	
		4 PLACES ± --- ± ---	mm INCH	DRAWN BY SMCREEVY	DATE 2013/04/19	TITLE 4MMSQ SOLAR DC CABLE ASSEMBLY W/ MX PANEL MT CONN			
		3 PLACES ± --- ± ---		CHECKED BY MSHANAHAN	DATE 2013/04/22	molex SD-93457-001			
		2 PLACES ± 0.05 ± ---		APPROVED BY STGRIFFIN	DATE 2013/05/22				
		1 PLACE ± 0.10 ± ---		MATERIAL NO.					
0 PLACE ± --- ± ---		ANGULAR ± .5 °		SEE CHARTS		THIS DRAWING CONTAINS INFORMATION THAT IS PROPRIETARY TO MOLEX INCORPORATED AND SHOULD NOT BE USED WITHOUT WRITTEN PERMISSION			
DRAFT WHERE APPLICABLE MUST REMAIN WITHIN DIMENSIONS									