

© - TE Connectivity. All Rights Reserved.

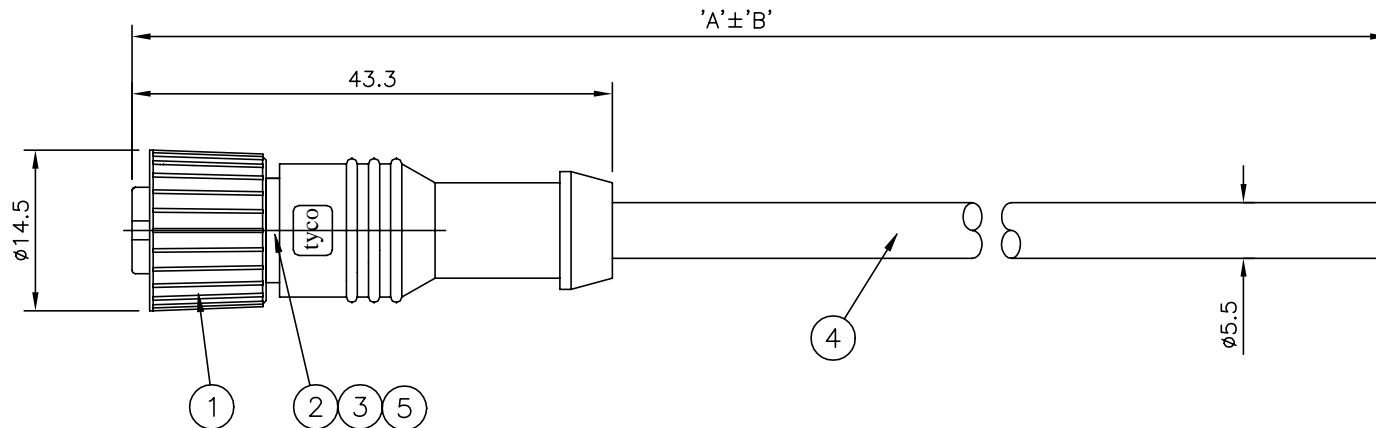
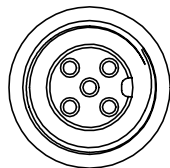
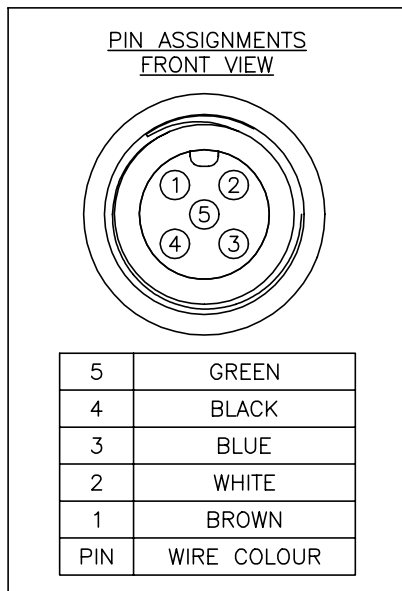
REVISIONS

P	LTR	DESCRIPTION	DATE	DWN	APVD
	C2	REVISED PER ECR-20-010365	02NOV2020	AP	BP

NOTES:

- ELECTRICAL DATA: CONTACT RESISTANCE: 10 mOhm MAX
INSULATION RESISTANCE: 100 MOhm MIN at 500VDC
CURRENT RATING: 5 AMPS
BREAKDOWN VOLTAGE: 500 VAC MIN PER MINUTE
- ENVIRONMENTAL: OPERATING TEMPERATURE: -20°C TO +80°C
SEALING REQUIREMENTS: IP67
- PROD SPEC: 108-3641
- PACKAGING: 107-3334
- FOR TECHNICAL DATA REFER TO YOUR LOCAL TE CONNECTIVITY SALES OFFICE
- ALL DIMENSIONS ARE NOMINAL FOR REFERENCE ONLY UNLESS OTHERWISE STATED

ITEM	DESCRIPTION	MATERIAL	FINISH/COLOUR	QTY
1	SCREW NUT	ZINC DIE CAST	2.5µm NICKEL PLATED	1
2	CONNECTOR BODY	POLYURETHANE	BLACK	1
3	SOCKET CONTACT	BRASS	0.15µm GOLD PLATED OVER NICKEL	5
4	5 CORE CABLE (CORES 22AWG TO UL2464)	PVC JACKET UV RESISTANT	BLACK	1
5	'O' RING	VITON	GREEN	1

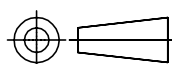


OBSOLETE	500	40 mm	M12 STRAIGHT FEMALE CONNECTOR 0.5m CABLE	1-1838246-1
OBSOLETE	10000	500 mm	M12 STRAIGHT FEMALE CONNECTOR 10.0m CABLE	1838246-5
OBSOLETE	7000	350 mm	M12 STRAIGHT FEMALE CONNECTOR 7.0m CABLE	1838246-4
	5000	250 mm	M12 STRAIGHT FEMALE CONNECTOR 5.0m CABLE	1838246-3
OBSOLETE	3000	150 mm	M12 STRAIGHT FEMALE CONNECTOR 3.0m CABLE	1838246-2
OBSOLETE	2000	100 mm	M12 STRAIGHT FEMALE CONNECTOR 2.0m CABLE	1838246-1

DIM A	TOL 'B'	DESCRIPTION	PART NUMBER
-------	---------	-------------	-------------

THIS DRAWING IS A CONTROLLED DOCUMENT.

DIMENSIONS: mm



TOLERANCES UNLESS OTHERWISE SPECIFIED:

0 PLC	± -
1 PLC	± -
2 PLC	± -
3 PLC	± -
4 PLC	± -
ANGLES	± -

MATERIAL FINISH

DWN 22AUG05

CHK H M RAGHAVENDRA

APVD F.WHEELER-KING 15DEC05

PRODUCT SPEC F.WHEELER-KING

APPLICATION SPEC

WEIGHT

CUSTOMER DRAWING



M12 STRAIGHT FEMALE CONNECTOR 5 POSITION, PVC CABLE

SIZE	CAGE CODE	DRAWING NO	RESTRICTED TO
------	-----------	------------	---------------

A3	00779	C=1838246	-
----	-------	-----------	---

SCALE	SHEET	REV
NTS	1 OF 1	C2