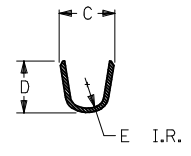
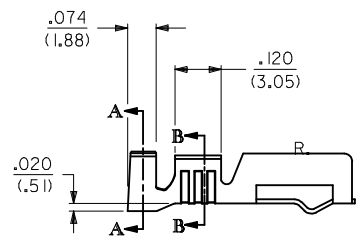
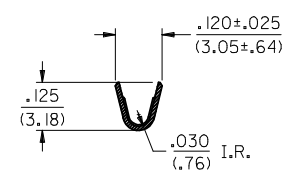


NOTES:

1. THESE TERMINALS ARE FOR USE WITH THE 1461-* SERIES HOUSINGS.
- THE -1* GROUP CRIMPS #18 TO #22 AWG WIRE WITH INSULATION DIAMETERS OF .061/(1.55) TO .102/(2.59).
- THE -2* GROUP CRIMPS #14 TO #16 AWG WIRE WITH AN INSULATION DIAMETER OF .140/(3.56) MAX.
- ⚠ THESE TERMINALS ARE PRODUCED ONLY FOR EXPORT TO JAPAN.
3. CARRIER CUT OFF DIMENSION: .007/(.18) MAX.
4. PRODUCT SPECIFICATION PS 50-36 APPLIES.



SECTION A-A

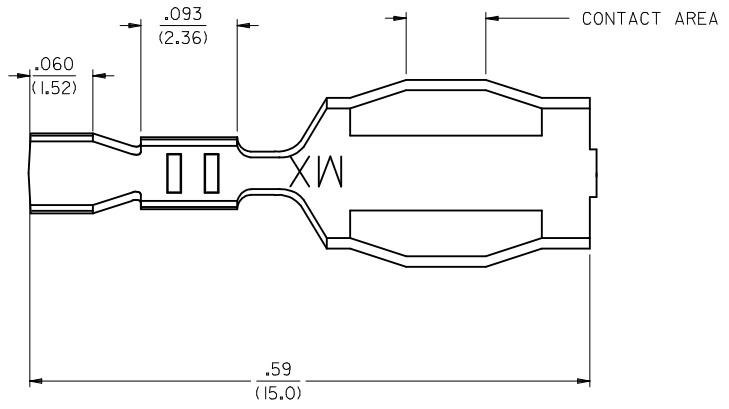


SECTION B-B

MATERIAL:
260 BRASS

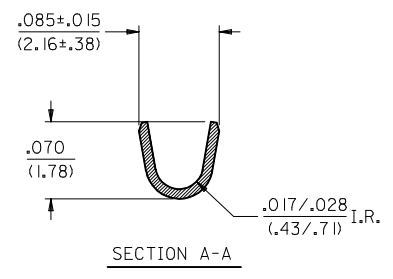
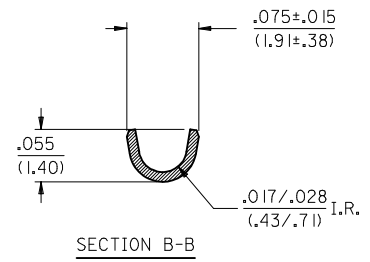
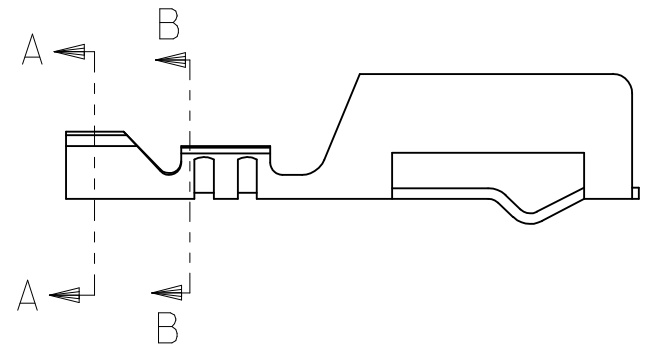
PART NO.	ENG. NO.	DIM. C	DIM. D	DIM. E	FORM	PLATING PER SDES-
05-02-0047	1457-1	.145±.025 (3.68±.64)	.135 (3.43)	.045 (1.14)	CHAIN	88-P901 TIN
05-02-0049	1457-2	.21±.03 (5.3±.8)	.185±.015 (4.70±.38)	.060 (1.52)	CHAIN	88-P901 TIN

REMOVE UNSOLD P/NS EC NO: UCP2017-0023 DRWN: SCHAFFER 2016/07/06 CHKD: APPR: FSMITH 2016/08/12 REV:	QUALITY SYMBOLS	GENERAL TOLERANCES (UNLESS SPECIFIED)	DIMENSION STYLE IN/MM	SCALE 4:1	DESIGN UNITS INCH	THIRD ANGLE PROJECTION
	▽=0	4 PLACES ± --- ± ---	mm INCH	DRAWN BY DATE CD 2011/07/26	TITLE TERMINAL, COMMONING CRIMP molex DOCUMENT NO. SD-1457-* SHEET NO. 1 OF 2	
	▽=0	3 PLACES ± --- ± .010	2 PLACES ± .25 ± .014	CHECKED BY DATE RHR 1991/11/02		
	▽=0	1 PLACE ± .35 ± ---	0 PLACE ± ±	APPROVED BY DATE FSMITH 2016/08/12		
		ANGULAR ±1/2°		MATERIAL NO.		
	DRAFT WHERE APPLICABLE MUST REMAIN WITHIN DIMENSIONS		SIZE C			



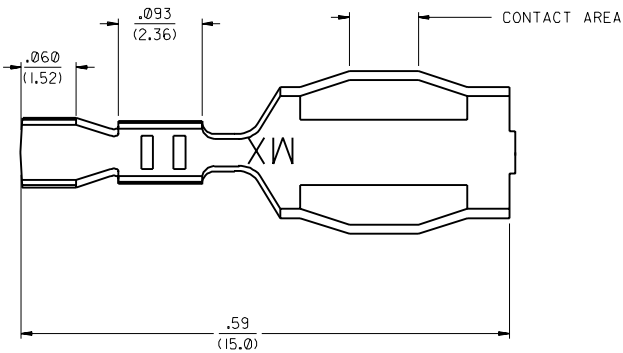
- NOTES:
1. FOR ALL OTHER DIMENSIONS SEE SHEET 1.
 2. THE -6* GROUP CRIMPS #24 TO #30 AWG WIRE WITH AN INSULATION DIAMETER OF .050/(1.27)

5/64 ^C



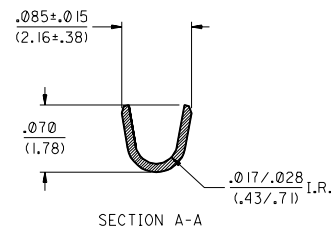
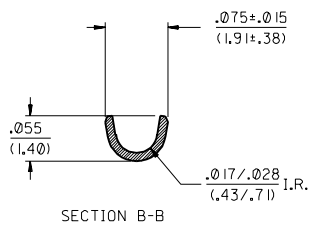
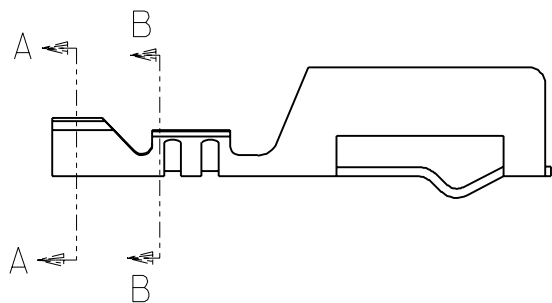
PART NO.	ENG. NO.	FORM	PLATING
05-02-0091	1457-6	CHAIN	TIN PER SDES-88

SEE SHEET 1 EC NO: UCP2017-0023 DRWN: J.SCHAER 2016/07/06 CHKD: APPR: FSMITH 2016/08/12	QUALITY SYMBOLS	GENERAL TOLERANCES (UNLESS SPECIFIED)	DIMENSION STYLE	SCALE	DESIGN UNITS	THIRD ANGLE PROJECTION	
	= 0	mm INCH	IN/MM	4:1	INCH		
	= 0	4 PLACES ± --- ± ---	DRAWN BY DATE	CD 2011/07/26	TITLE		TERMINAL, COMMONING CRIMP
	= 0	3 PLACES ± --- ± .010	CHECKED BY DATE	RHR 1991/11/02	molex		
	2 PLACES ± .25 ± .014	APPROVED BY DATE	FSMITH 2016/08/12	DOCUMENT NO.		SHEET NO.	
	1 PLACE ± .35 ± ---	ANGULAR ±1/2°		SD-1457-*		2 OF 2	
	0 PLACE ± ±	DRAFT WHERE APPLICABLE MUST REMAIN WITHIN DIMENSIONS		THIS DRAWING CONTAINS INFORMATION THAT IS PROPRIETARY TO MOLEX INCORPORATED AND SHOULD NOT BE USED WITHOUT WRITTEN PERMISSION			



NOTES:

1. FOR ALL OTHER DIMENSIONS SEE SHEET I.
2. THE -6* GROUP CRIMPS #24 TO #30 AWG WIRE WITH AN INSULATION DIAMETER OF .050/(1.27)



PART NO.	ENG. NO.	FORM	PLATING
05-02-0091	I457-6	CHAIN	TIN PER
05-02-0092	I457-6L	LOOSE	SDES-88

DIMENSIONS SHOWN METRIC (INCH) UNLESS OTHERWISE SPECIFIED
 TOLERANCES: ANGULAR ± .0005

3 PLACE	± .010	METRIC	---
2 PLACE	± .014	METRIC	± 0.25
1 PLACE	---	METRIC	± 0.36

DRAFT WHERE APPLICABLE MUST REMAIN WITHIN DIMENSIONS

DRWG. BY: AFG CHKD. BY: RHR
 APP'D. BY: GWF SCALE: 4 : 1

TITLE: TERMINAL, COMMONING, CRIMP (I457-6*)
 PART NO.: SEE CHART SD-I457-#
 MOLEX INCORPORATED LITTLE ROCK, ARK. 69532 U.S.A.
 SHEET NO. 3 DATE 02/11/91

REVISIONS: REVISIONS