

4

3

2

1

THIS DRAWING IS UNPUBLISHED.

RELEASED FOR PUBLICATION

© COPYRIGHT

ALL RIGHTS RESERVED.

LOC DIST

REVISIONS

P	LTR	DESCRIPTION	DATE	DWN	APVD

# REPLACED BY OCEAN STYLE APPLICATOR PART NUMBER

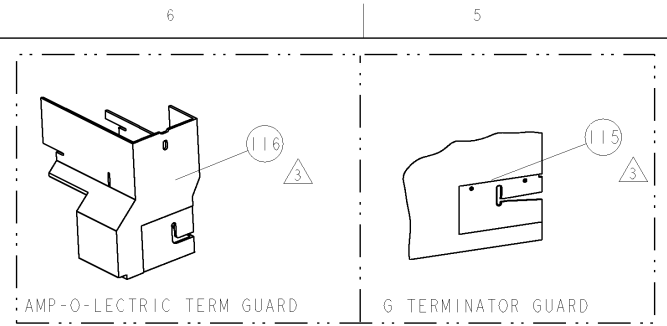
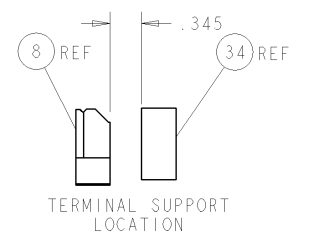
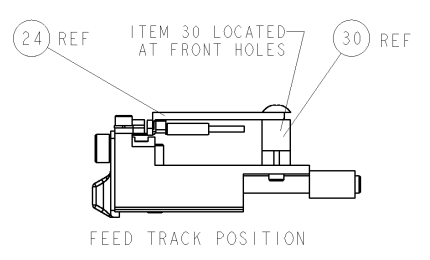
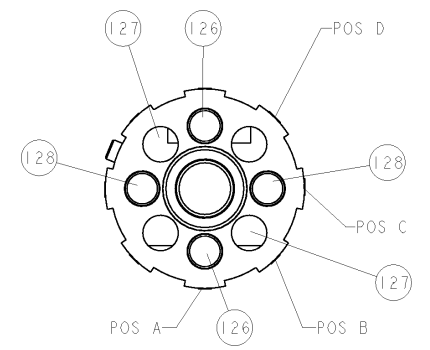
FOR REPLACEMENT PARTS FOR APPLICATOR REFER TO ADDITIONAL PAGE(S). SPARE PARTS KIT (IF LISTED) WILL REMAIN AVAILABLE.

THE REPLACEMENT OCEAN STYLE APPLICATOR HAS THE SAME TERMINATOR/PRESS INTERFACE AS APPLICATOR

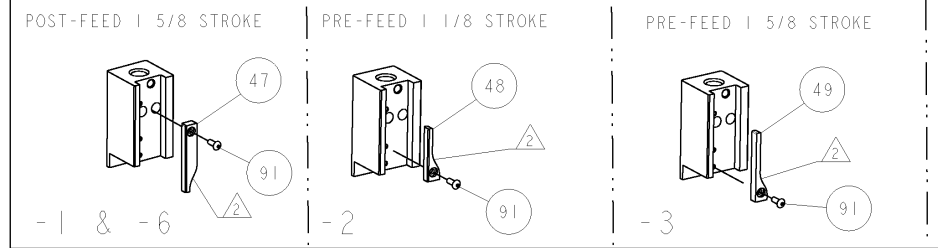
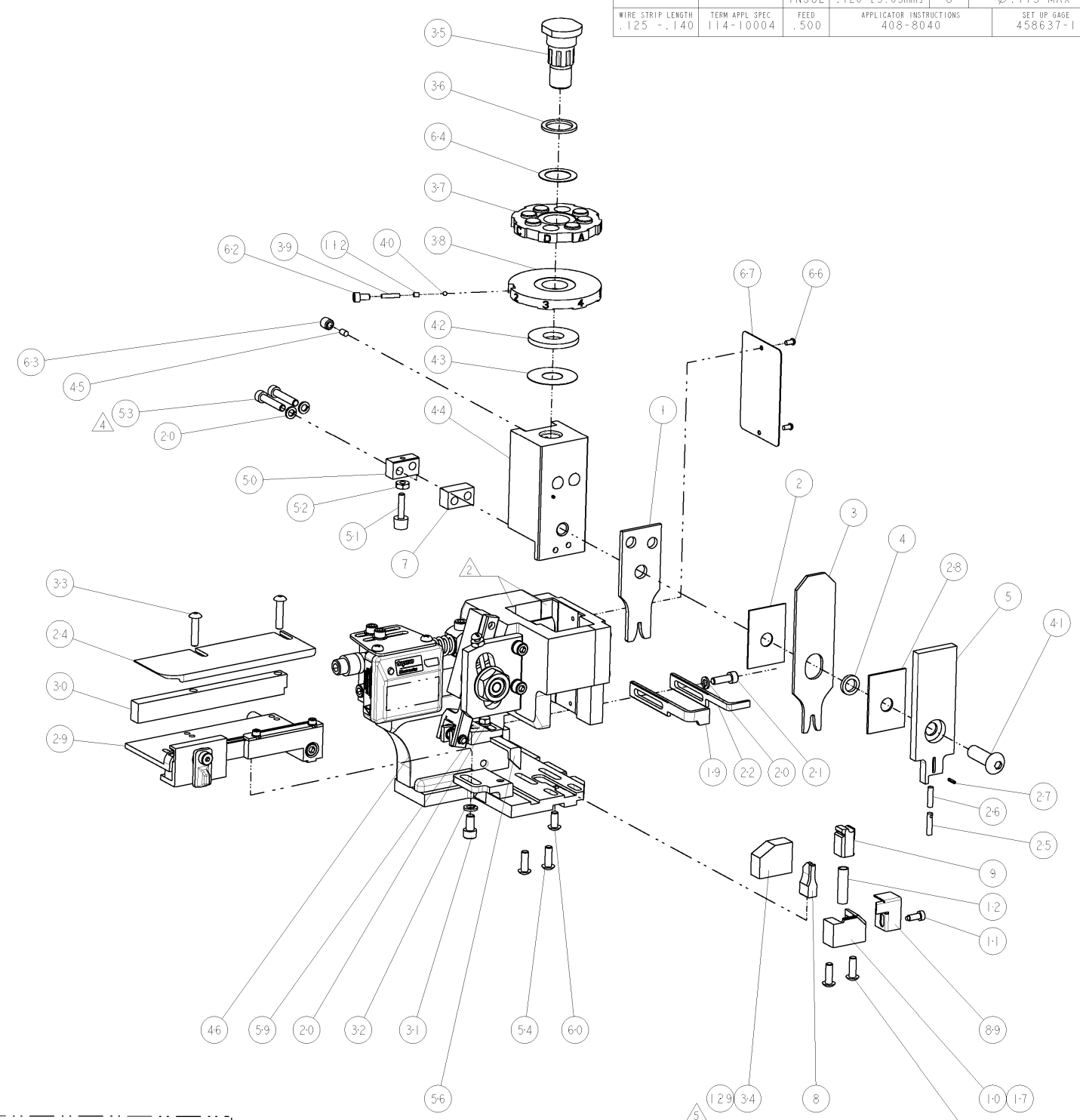
THIS DRAWING IS A CONTROLLED DOCUMENT.		DWN	 TE Connectivity		
DIMENSIONS:		CHK			
TOLERANCES UNLESS OTHERWISE SPECIFIED:		APVD	NAME		
 0 PLC ± 1 PLC ± 2 PLC ± 3 PLC ± 4 PLC ± ANGLES ±		PRODUCT SPEC	RESTRICTED TO		
		APPLICATION SPEC	SIZE	CAGE CODE	DRAWING NO
MATERIAL	FINISH	WEIGHT	A3	C-	
		SCALE	SHEET	OF	REV

PART NUMBER	REV	FIRST USED	POWER UNIT	FEED TYPE	DESCRIPTION
1852314-1	D	122500-1	LEADMAKER	POST FEED	CUTS CARRIER
1852314-2	D	565435-5	BENCH MODEL K	PRE FEED	CUTS CARRIER
1852314-3	D	354500-1	BENCH MODEL G	PRE FEED	CUTS CARRIER
1852314-6	D	122500-1	LEADMAKER	POST FEED	CONTINUOUS CARRIER
7-1852314-7	B	-	-	-	SPARE PARTS

- △ RECOMMENDED SPARE PARTS
- △ GREASE LIGHTLY
- △ GUARD MUST BE IN PLACE WHEN OPERATING APPLICATOR IN A BENCH MACHINE
- △ CUT TO LENGTH AT ASSEMBLY.
- △ USE ITEM 34 FOR PIN TERMINALS AND ITEM 129 FOR SOCKET TERMINALS.



TERMINAL NAME: PIN ASSEMBLY, .062 (TYPE III+)					
SOCKET	PIN	TE TERMINAL - TE CRIMP SPECS			
66598	213603				
-	66597	PAD LTR	CRIMP HEIGHT	WIRE SIZE	
-	-	A	.068±.002[1.73±0.05mm]	14 AWG	
-	-	B	.059±.002[1.50±0.05mm]	16 AWG	
-	-	C	.052±.002[1.32±0.05mm]	18 AWG	
-	-	D	-	-	
-	-	CRIMP	SIZE	TYPE	RANGE
-	-	WIRE	.090 [2.29mm]	F	18-14 AWG
-	-	INSUL	.120 [3.05mm]	O	∅.115 MAX
WIRE STRIP LENGTH	TERM APPL SPEC	FEED	APPLICATOR INSTRUCTIONS		SET UP GAGE
.125 ±.140	114-10004	.500	408-8040		458637-1



REV	QTY	UNIT	DESCRIPTION	DATE	BY	APPV
5	1	1	690786-1	6/29/06		
	2	2	2-354779-2			
	2	2	354779-6			
	2	2	8-354778-7			
	-	-	455749-1			
	-	-	679532-1			
	1	1	690603-1			
	1	1	1-21002-7			
	1	1	318563-1			
	1	1	4088040			
	1	1	217238-1			
	1	1	461264-1			
	2	2	21017-2			
	1	1	986950-1			
	1	1	21009-2			
	1	1	23030-1			
	1	1	22733-8			
	1	1	2-22603-0			
	1	1	458537-2			
	4	4	2-21002-2			
	2	2	3-21000-0			
	1	1	21018-5			
	1	1	811242-2			
	1	1	690753-1			
	-	-	690602-6			
	-	-	690602-5			
	1	1	690501-4			
	1	1	459456-6			
	1	1	690191-1			
	1	1	455673-1			
	1	1	690125-1			
	1	1	690124-1			
	1	1	7-21002-9			
	1	1	23241-6			
	1	1	690170-1			
	1	1	690142-1			
	1	1	354777-1			
	1	1	22480-5			
	1	1	690212-1			
	1	1	690786-2			
	2	2	2-21002-4			
	1	1	21024-5			
	1	1	3-21000-4			
	1	1	1320908-1			
	1	1	1633091-7			
	1	1	1-455888-0			
	1	1	21028-2			
	1	1	1-22278-0			
	1	1	854769-1			
	1	1	1320928-5			
	1	1	690472-2			
	1	1	2-21000-7			
	4	4	21024-4			
	-	-	691353-1			
	1	1	679625-1			
	1	1	3-22280-3			
	1	1	690461-1			
	-	-	690459-1			
	1	1	462006-1			
	1	1	1-1633110-1			
	1	1	6-240641-2			
	1	1	854772-1			
	1	1	2-238011-2			
	1	1	2-456135-4			
	1	1	455888-6			
	1	1	5-456406-5			
-77	-6	-3	-2	-1	U/M	

DIMENSIONS: INCHES		TOLERANCES UNLESS OTHERWISE SPECIFIED:		DRAWN: M. HERR		DATE: 02AUG2006	
0 PLC	+	1 PLC	±0.1	2 PLC	±0.01	3 PLC	±0.001
4 PLC	±0.0001	ANGLES		CHECKED: G. BAILEY		DATE: 03AUG2006	
APPROVED: T. FABIN				DATE: 03AUG2006			
PRODUCT SPEC: 114-10004				NAME: SIDE FEED HDM APPLICATOR			
APPLICATION SPEC: 114-10004				SIZE: A			
MATERIAL: FINISH:				CAGE CODE: 00779			
CUSTOMER DRAWING				DRAWING NO: 1852314			
SCALE: 3:5				SHEET 1 OF 1			

CUSTOMER VIEWABLE ASSEMBLY