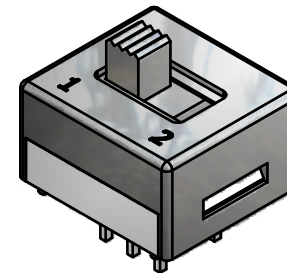
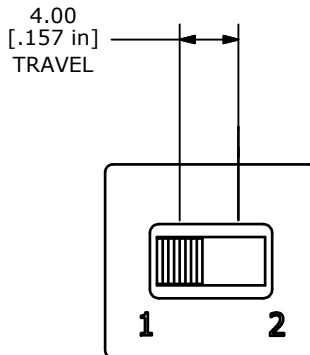
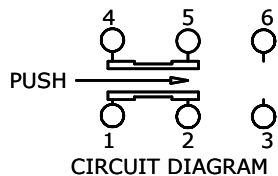


PC MOUNTING

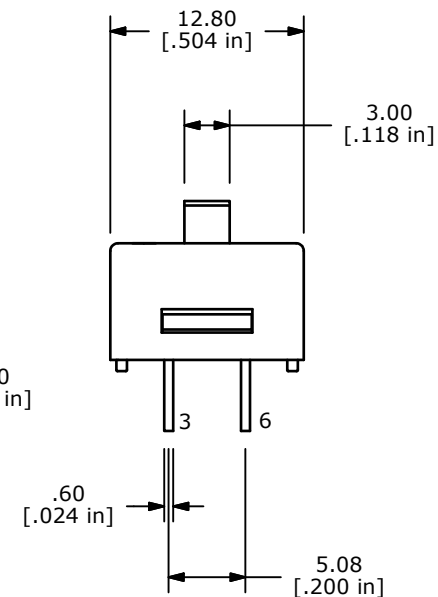
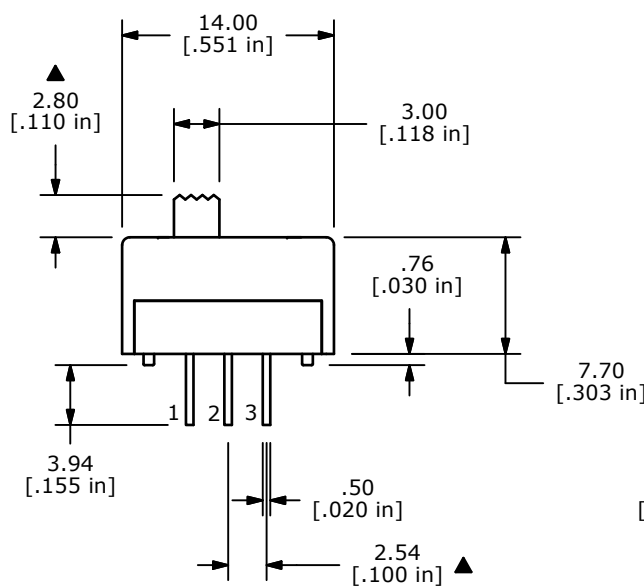


ISOMETRIC

SWITCH FUNCTION		
POS. 1	POS. 2	POS. 3
ON	OFF	ON
2-1,5-4	OPEN	2-3,5-6



CIRCUIT DIAGRAM



NOTE:

1. ALL DIMENSIONS IN MM [INCH]
2. GENERAL TOLERANCE: X.X=±0.4
X.XX=±0.25
3. TERMINAL NUMBERS FOR REF ONLY
- ▲4. PLATING MATERIAL: SILVER
5. RATING: 1A @ 250VAC
3A @ 120VAC (OR 28VDC)
6. CONTACT RESISTANCE: 50 Milli-Ohms MAX.
7. LIFE EXPECTANCY: 20,000 ACTUATIONS
AT FULL LOAD.
8. INSULATION RESISTANCE: 1,000 MEGA-OHM MIN.
9. DIELECTRIC STRENGTH: 1,000 V RMS @SEA LEVEL.
10. OPERATING TEMP.: -40°C to 80°C
11. ▲ DENOTES CRITICAL PARAMETER.
12. 2002/95/EC (ROHS) COMPLIANT



B	20454	REMOVE (E) FROM DRAWING TITLE	2/7/12	BGL
A	18634	RELEASED FOR PRODUCTION	9/18/09	BLR
REV	PCR NO	DESCRIPTION	DATE	BY

TITLE 600DP3S2M2Q				
SCALE 2:1	DATE 9/18/2009	DR BLR	DWG T620308	REV B

THE INFORMATION CONTAINED IN THIS DOCUMENT IS PROPRIETARY TO E-SWITCH AND IS NOT TO BE COPIED OR TRANSFERRED