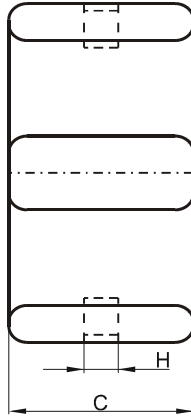
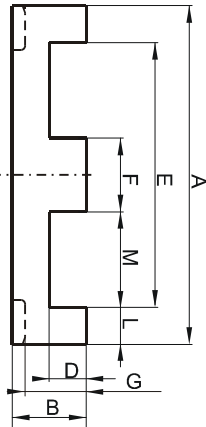


Specification for:

CR42216EC

110 Delta Drive
Pittsburgh, PA 15238
Phone: 412/696-1333
Fax: 412/696-0333
Email: magnetics@spang.com

DIMENSIONS



(mm)	Nominal:	Tol. min.:	Tol. max.:
A	21.8	-0.4	+ 0.4
B	5.7	-0.1	+ 0.1
C	15.8	-0.3	+ 0.3
D	3.2	-0.1	+ 0.1
E	16.8	-0.4	+ 0.4
F	5.0	-0.1	+ 0.1
G	4.68	-0.15	+ 0.15
H	2.8	0.0	+ 0.2
L	2.5 Ref.		
M	5.9 Ref.		
Eff. Parameters			
Ae mm²	Amin mm²	le mm	Ve mm³
76.0	73.1	32.3	2451

INDUCTANCE

AL value (nH)	Test conditions
Nom: 5066 Min.: 3800	10 kHz, < 0.5 mT, 25 °C

MARKING

R EC

CORE LOSSES

P _i max	Test conditions
90 mW/cm ³ (0.22 W/set)	100 kHz, 100 mT, 100 °C
518 mW/cm ³ (1.27 W/set)	100 kHz, 200 mT, 100 °C

NOTE

Spec. modifications	Previous	Revised
2005-06-22	A=21.6±0.26 C=15.6 Min. L=2.54±0.31 M=5.72±0.31 Losses: General R material	A=21.8±0.4 C=15.5 Min. L=2.5 Ref. M=5.9 Ref. Losses: Detail as indicated