

SAFETY ORGANIZATIONS

THIS FILTER HAS BEEN FORMALLY RECOGNIZED, CERTIFIED OR APPROVED BY THE LISTED AGENCY. THEREFORE, ALL TEST/REQUIREMENTS SPECIFIED IN THE LATEST REVISION OF THE FOLLOWING AGENCY STANDARDS HAVE BEEN MET:
 UL RECOGNIZED: UL 1283
 UL LISTED: UL 935
 CSA CERTIFIED: CSA C22.2 No. 8
 VDE APPROVED: EN 60939-2

OPERATING SPECIFICATIONS

LINE CURRENT/VOLTAGE: 2.0 AMP/50°C, 277 VAC 50-60Hz (UL&CSA)
 2.0 AMP/50°C, 277 VDC (UL&CSA)
 2.0 AMP/50°C, 250 VAC 50-60Hz (VDE)
 2.0 AMP/50°C, 250 VDC (VDE)

MAXIMUM LEAKAGE CURRENT, EACH LINE TO GROUND:
 0.28 mA @ 277V 60Hz
 0.21 mA @ 250V 50Hz

OPERATING AMBIENT TEMP. RANGE: -10°C TO +50°C @ RATED CURRENT, I_r.

IN AN AMBIENT, T_a, HIGHER THAN 50°C, THE MAXIMUM OPERATING CURRENT, I_o, IS AS FOLLOWS:

$$I_o = I_r \sqrt{\frac{85 - T_a}{35}}$$

RELIABILITY SPECIFICATIONS:

STORAGE TEMPERATURE: -40°C TO +85°C
 HUMIDITY: 21 DAYS @ 40°C 95% RH.
 CURRENT OVERLOAD TEST: 6 TIMES I_r FOR 8 SECONDS

TEST SPECIFICATIONS:

INDUCTANCE: 0.89 mH NOMINAL (WHITE)
 1.04 mH NOMINAL (BLACK)
 CAPACITANCE: (MEASURED @ 1 kHz, 0.250VAC MAX., 25°C±1°C)
 LINE TO GROUND: 0.0044µF ± 20 %
 LINE TO LINE: 0.33µF ± 20 %
 DISCHARGE RESISTOR: 1 MEGOHM
 L/G AND L/L I.R.
 NO DISCHARGE RESISTOR: 6000MEG OHM (MIN.) 100VDC 20°C AND 50% RH

RECOMMENDED RECEIVING INSPECTION HIPOT:

LINE TO GROUND: 2300 VDC FOR 1 MINUTE
 LINE TO LINE: 1853 VDC FOR 1 MINUTE

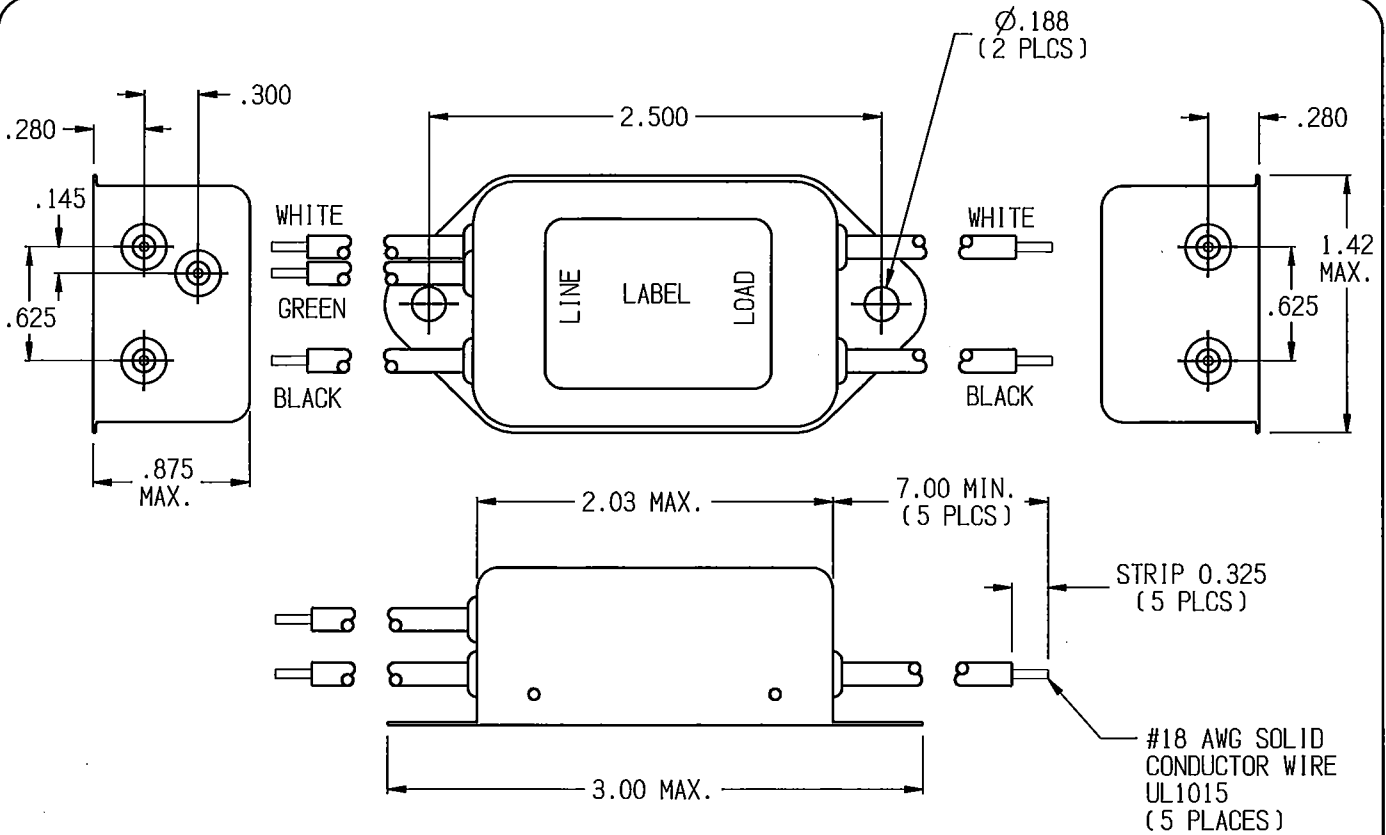
FILTER APPROVAL:

THE BEST WAY TO SELECT AND QUALIFY A FILTER IS FOR YOUR ENGINEERING TO TEST THE UNIT IN YOUR EQUIPMENT.

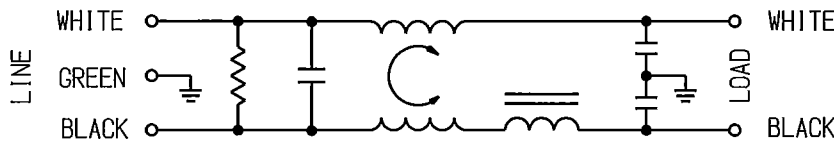
CUSTOMER DRAWING

CATALOG # 2FB3

ECN#	APPRVD	DATE
/	PJO	28FEB12



ELECTRICAL SCHEMATIC



50Ω - 50Ω (MINIMUM) INSERTION LOSS

FREQUENCY MHz	.03	.05	.1	.15	.5	1.0	2.0	5.0	10	20	30	/
COMMON dB	3	7	13	16	28	34	42	45	44	41	41	/
DIFF. dB	6	11	20	25	43	51	56	51	44	40	39	/

PARTS SHALL COMPLY WITH TYCO ELECTRONICS 138-702 SPECIFICATION FOR HAZARDOUS SUBSTANCES

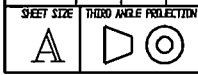
UNLESS OTHERWISE SPECIFIED TOLERANCE TO BE ±0.025 MATERIAL & FINISH: AS SUPPLIED

NOTES:

TE TE Connectivity

RFI FILTER

TYCO ELECTRONICS PART NO. 8-160905-9



THIS INFORMATION IS CONFIDENTIAL AND PROPRIETARY TO TYCO ELECTRONICS CORPORATION AND ITS WORLDWIDE SUBSIDIARIES AND AFFILIATES. IT MAY NOT BE DISCLOSED TO ANYONE OTHER THAN TYCO ELECTRONICS PERSONNEL, WITHOUT WRITTEN AUTHORIZATION FROM TYCO ELECTRONICS CORPORATION, WARRENSBURG, PENNSYLVANIA USA.

SCALE: 1:1	DATE: 24MAY11	DRAWING NUMBER: 2FB3	REV. 3
DRW. BY: LJD	DRG: PJO		