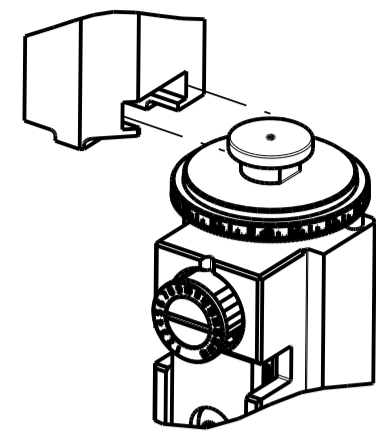


| PART NUMBER | REVISION | DESCRIPTION                            | FEED TYPE  |
|-------------|----------|--|------------|
| 2266101-1   | F        | FINE CRIMP HEIGHT ADJUST               | MECHANICAL |
| 2266101-2   | F        | FINE CRIMP HEIGHT ADJUST               | PNEUMATIC  |
| 5-2266101-1 | F        | SEAL STRIPPER CRIMPER TERMINATING UNIT | MECHANICAL |
| 5-2266101-2 | F        | SEAL STRIPPER CRIMPER TERMINATING UNIT | PNEUMATIC  |
| 7-2266101-1 | F        | MECHANICAL AND CRIMP TOOLING KIT       | MECHANICAL |
| 7-2266101-2 | F        | PNEUMATIC AND CRIMP TOOLING KIT        | PNEUMATIC  |
| 7-2266101-7 | B        | CRIMP TOOLING KIT                      | -          |
| 7-2266101-8 | B        | APPLICATOR CONVERSION KIT              | -          |

ATLANTIC VERSION TERMINATOR INTERFACE ADAPTER



| APPLICATOR DATA |                |      |
|-----------------|----------------|------|
| CRIMP           | SIZE           | TYPE |
| WIRE            | 2.29 mm [.090] | F    |
| INSUL           | 2.79 mm [.110] | O    |

| APPLICATOR CONVERSION KITS |                           |
|----------------------------|---------------------------|
| PART NUMBER                | INSULATION DIAMETER RANGE |
| 7-2266100-8                | Ø3.05-3.81mm [.120-.150]  |
| 7-2266101-8                | Ø2.67-3.02mm [.105-.119]  |
| 7-2266102-8                | Ø2.26-2.64mm [.089-.104]  |
| 7-2266103-8                | Ø1.93-2.24mm [.076-.088]  |
| 7-2266104-8                | Ø1.60-1.91mm [.063-.075]  |

| TERMINAL DATA: DEUTSCH TERMINAL            |                              | TE CRIMP SPECIFICATION |  |
|--|------------------------------|------------------------|--|
| TERMINAL NAME: STAMPED CONTACT PIN SIZE 16 |                              |                        |  |
| WIRE STRIP LENGTH                          | INSULATION DIAMETER RANGE    |                        |  |
| 3.81-5.09 mm [.150-.200 IN]                | Ø2.67-3.02 mm [.105-.119 IN] |                        |  |
| TERMINAL APPLICATION SPECIFICATION         | 114-151000                   |                        |  |

| TERMINAL DATA: DEUTSCH TERMINAL               |                              | TE CRIMP SPECIFICATION |  |
|---|------------------------------|------------------------|--|
| TERMINAL NAME: STAMPED CONTACT SOCKET SIZE 16 |                              |                        |  |
| WIRE STRIP LENGTH                             | INSULATION DIAMETER RANGE    |                        |  |
| 3.81-5.09 mm [.150-.200 IN]                   | Ø2.67-3.02 mm [.105-.119 IN] |                        |  |
| TERMINAL APPLICATION SPECIFICATION            | 114-151000                   |                        |  |

| TERMINALS APPLIED |                  |             |                  |
|-------------------|------------------|-------------|------------------|
| TE TERMINAL       | DEUTSCH TERMINAL | TE TERMINAL | DEUTSCH TERMINAL |
| 286505-1          | 1060-14-0122     | 286505-2    | 1060-14-0144     |
| 286505-3          | 1060-14-0177     | 285505-5    | 1060-14-1077     |
| 286505-6          | 1060-14-1088     | 286503-1    | 1060-16-0122     |
| 286503-2          | 1060-16-0144     | 286503-3    | 1060-16-0177     |
| 286503-7          | 1060-16-0722     | 286503-8    | 1060-16-0744     |
| 286503-9          | 1060-16-0777     | 1-286503-1  | 1060-16-0977     |
| 1-286503-2        | 1060-16-0988     | 1-286503-4  | AT60-14-0122     |
| 1-286503-5        | AT60-16-0144     |             | AT60-16-0122     |

| TERMINALS APPLIED |                  |             |                  |
|-------------------|------------------|-------------|------------------|
| TE TERMINAL       | DEUTSCH TERMINAL | TE TERMINAL | DEUTSCH TERMINAL |
| 286506-1          | 1062-14-0122     | 286506-2    | 1062-14-0144     |
| 286506-3          | 1062-14-0177     | 286506-7    | AT62-14-0122     |
| 286506-5          | 1062-14-1077     | 286506-6    | 1062-14-1088     |
| 286504-1          | 1062-16-0122     | 286504-2    | 1062-16-0144     |
| 286504-3          | 1062-16-0177     | 286504-7    | 1062-16-0722     |
| 286504-8          | 1062-16-0744     | 286504-9    | 1062-16-0777     |
| 1-286504-1        | 1062-16-0977     | 1-286504-2  | 1062-16-0988     |
| 1-286504-5        | AT62-16-0122     | 1-286504-6  | AT62-16-0144     |

| WIRE SIZE | CRIMP HEIGHT mm [INCH]              | CRIMP HEIGHT REFERENCE SETTING |
|-----------|-------------------------------------|--------------------------------|
| 14 AWG    | 1.40+0.03/-0.05 [.055+ .001/- .002] | 5.2                            |
| 2.00mm2   | 1.40+0.03/-0.05 [.055+ .001/- .002] | 5.4                            |
| 1.50mm2   | 1.35+0.03/-0.05 [.053+ .001/- .002] | 5.7                            |
| 16 AWG    | 1.27+0.03/-0.05 [.050+ .001/- .002] | 6.5                            |
| 1.00mm2   | 1.27+0.03/-0.05 [.050+ .001/- .002] | 6.6                            |
| 18 AWG    | 1.24+0.03/-0.05 [.049+ .001/- .002] | 6.9                            |
| 0.75mm2   | 1.22+0.03/-0.05 [.048+ .001/- .002] | 7.1                            |

**\*WARNING**  
ON INSTALLATION, SET WIRE DISC TO CRIMP HEIGHT REFERENCE SETTING FOR LARGEST WIRE SIZE. CRIMP HEIGHT REFERENCE SETTINGS GREATER THAN THE VALUE SHOWN MAY CAUSE DAMAGE TO THE CRIMP TOOLING. REFER TO THE INSTRUCTION SHEET FOR PROPER SETUP AND ADJUSTMENTS.

- 1 RECOMMENDED SPARE PARTS
- 2 REFER TO SUPPLIED INSTRUCTION SHEET FOR CLEANING, LUBRICATION AND STORAGE OF APPLICATOR.
- 3 APPLY PART NUMBER 1-23419-5 LOCTITE TO THREADS OF ITEM 180. APPLY PART NUMBER 2-23419-6 LOCTITE TO THREADS OF ITEM 242.
- 4 CRIMP HEIGHT REFERENCE SETTING WAS THE SETTING USED WHEN THE APPLICATOR WAS QUALIFIED AT THE FACTORY. ADJUSTMENT MAY BE NECESSARY WHEN RUNNING APPLICATOR IN THE FIELD.
- 5 TERMINAL LUBRICANT IS RECOMMENDED.
- 6 UNLESS SPECIFIED OTHERWISE TORQUE VALUES SHALL BE USED PER DOCUMENT, 101-35000.
- 7 SEE APPROPRIATE APPLICATOR LOG SHEETS FOR APPLIED TERMINALS AND WIRE RANGE.

| LOC | DIST | REVISIONS |               |           |        |
|-----|------|-----------|---------------|-----------|--------|
| A   | 66   | REV       | DATE          | BY        | APPV   |
|     |      | D         | ECR-19-006162 | 16APR2019 | LG TE  |
|     |      | E         | ECR-20-011333 | 11AUG2020 | JWC GB |
|     |      | F         | ECR-20-011820 | 20AUG2020 | MEH TE |
|     |      | F1        | ECR-21-001299 | 02FEB2021 | JWC GB |

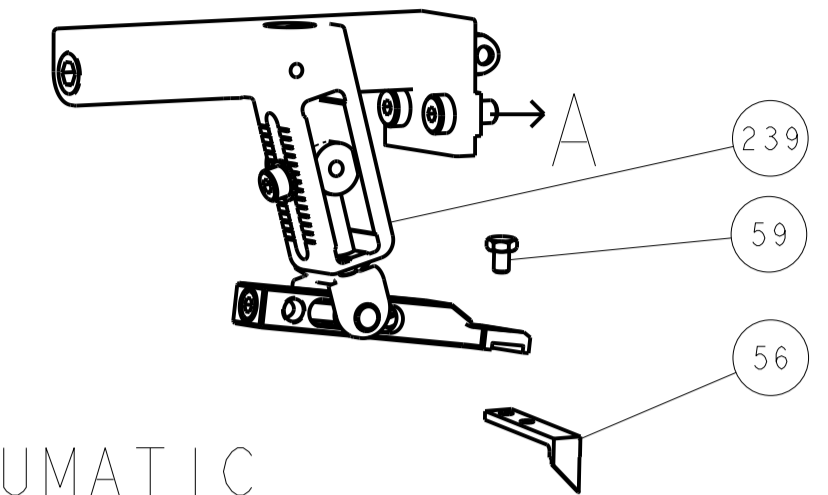
|   |   |     |     |     |     |     |     |             |                                     |     |
|---|---|-----|-----|-----|-----|-----|-----|-------------|-------------------------------------|-----|
| - | - | -   | -   | 1   | 1   | -   | -   | 1803515-3   | RAM ASSEMBLY, SF ATLANTIC           | 293 |
| - | - | -   | -   | 1   | 1   | -   | -   | 2-1803583-1 | APPLICATOR BASIC ASSEMBLY, SF       | 292 |
| - | - | 1   | -   | 1   | -   | 1   | -   | 2119641-1   | FEED CAM, AIR FEED                  | 248 |
| - | - | 1   | 1   | 1   | 1   | 1   | 1   | 2119082-9   | CAM, SNAIL, INSULATION ADJUSTMENT   | 244 |
| - | - | 1   | 1   | 1   | 1   | 1   | 1   | 2079764-1   | WASHER, WAVE SPRING, CREST-TO-CREST | 243 |
| - | - | 1   | 1   | 1   | 1   | 1   | 1   | 2119083-1   | RETAINER, INSULATION DIAL           | 242 |
| - | - | 1   | 1   | 1   | 1   | 1   | 1   | 7-18023-7   | SCR, SKT HD CAP M3 X 4.0            | 241 |
| - | - | -   | 1   | -   | 1   | -   | 1   | 2119580-1   | MECHANICAL FEED ASSEMBLY            | 239 |
| - | - | 1   | -   | 1   | -   | 1   | -   | 2844940-1   | AIR FEED MODULE                     | 238 |
| - | - | -   | -   | 1   | 1   | -   | -   | 4-1722335-3 | STRIPPER, SIDE FEED                 | 182 |
| - | - | -   | -   | 1   | 1   | -   | -   | 1-5018030-0 | NUT, HEX, REG, RoHS, M3.5           | 181 |
| - | - | -   | -   | 1   | 1   | -   | -   | 2-1752354-0 | STANDOFF, HOLD-DOWN                 | 180 |
| - | - | -   | -   | 1   | 1   | -   | -   | 9931111-1   | PIN, SLOTTED SPRING 3.0 X 20.0      | 177 |
| - | - | -   | -   | 1   | 1   | -   | -   | 5-22280-0   | SPRING, COMPRESSION                 | 176 |
| - | - | -   | -   | 1   | 1   | -   | -   | 1752353-3   | GUIDE PIN, HOLDDOWN                 | 175 |
| - | - | -   | -   | 1   | 1   | -   | -   | 1901680-2   | GUIDE PIN, HOLDDOWN                 | 174 |
| - | - | REF | REF | REF | REF | REF | REF | 994970-2    | COUNTER, MAGNETIC                   | 164 |
| - | - | 1   | 1   | 1   | 1   | 1   | 1   | 2119955-1   | ASSY, LUBRICATOR, SIDE FEED         | 113 |
| - | - | 1   | 1   | 1   | 1   | 1   | 1   | 2844908-1   | SCREW, LOCKING                      | 99  |
| - | - | 1   | 1   | 1   | 1   | 1   | 1   | 2844907-1   | POST, LOCKING                       | 98  |
| 1 | - | 1   | 1   | 1   | 1   | 1   | 1   | 455888-8    | SPACER, CRIMPER                     | 82  |
| 1 | - | -   | -   | -   | -   | -   | -   | 2266101     | PRINT, APPLICATOR LOG SHEET         | 72  |
| - | - | 1   | 1   | 1   | 1   | 1   | 1   | 1803607-3   | DOCUMENTATION PACKAGE               | 71  |
| - | - | 2   | 2   | 2   | 2   | 2   | 2   | 2119791-9   | DEPRESSOR, WIRE                     | 70  |
| - | - | 1   | 1   | 1   | 1   | 1   | 1   | 2119740-1   | TAG, IDENTIFICATION                 | 67  |
| - | - | 2   | 2   | 2   | 2   | 2   | 2   | 2168078-1   | SCREW, DRIVE, RH, RoHS, 2 x .188    | 66  |
| - | - | 1   | 1   | 1   | 1   | 1   | 1   | 2168083-2   | SCR, SKT HD CAP, RoHS, M4 X 8.0     | 60  |
| - | - | 1   | 1   | 1   | 1   | 1   | 1   | 5-18022-5   | SCR, HEX HD CAP, M4 X 6.0           | 59  |
| - | - | 1   | 1   | 1   | 1   | 1   | 1   | 1338685-1   | PAWL, FEED                          | 56  |
| - | - | 4   | 4   | 4   | 4   | 4   | 4   | 2168083-3   | SCR, SKT HD CAP, RoHS, M4 X 12.0    | 54  |
| - | - | 2   | 2   | 2   | 2   | 2   | 2   | 2168083-3   | SCR, SKT HD CAP, RoHS, M4 X 12.0    | 53  |
| - | - | 1   | 1   | 1   | 1   | 1   | 1   | 1803382-6   | HOLD DOWN, SPRING LOADED            | 50  |
| - | - | 1   | 2   | 1   | 2   | 1   | 2   | 18023-9     | SCR, SKT HD CAP M4 X 6.0            | 49  |
| - | - | -   | -   | -   | -   | -   | -   | 2119652-1   | FEED CAM, PRE FEED                  | 48  |
| - | - | -   | -   | -   | -   | -   | -   | 2119653-1   | FEED CAM, POST FEED                 | 47  |
| - | - | 1   | 1   | -   | -   | 1   | 1   | 1803583-9   | APPLICATOR BASIC ASSEMBLY, SF       | 46  |
| - | - | 1   | 1   | -   | -   | 1   | 1   | 1803515-1   | RAM ASSEMBLY, SF ATLANTIC           | 44  |
| - | - | 1   | 1   | 1   | 1   | 1   | 1   | 1803602-1   | SCR, BHSC, RoHS (M8 X 25)           | 41  |
| - | - | 1   | 1   | 1   | 1   | 1   | 1   | 1752356-1   | SUPPORT, TERMINAL                   | 34  |
| - | - | 2   | 2   | 2   | 2   | 2   | 2   | 2079383-5   | SCR, BHSC, RoHS (M4 X 20)           | 33  |
| - | - | 2   | 2   | 2   | 2   | 2   | 2   | 2-2844962-8 | SPACER, CYLINDRICAL, STRIP GUIDE    | 30  |
| - | - | 1   | 1   | 1   | 1   | 1   | 1   | 2844992-1   | ASSEMBLY, STRIP GUIDE               | 29  |
| - | - | 1   | 1   | 1   | 1   | 1   | 1   | 1320928-2   | STRIP GUIDE                         | 24  |
| - | - | 1   | 1   | -   | -   | 1   | 1   | 2168083-2   | SCR, SKT HD CAP, RoHS, M4 X 8.0     | 21  |
| - | - | 2   | 2   | 1   | 1   | 2   | 2   | 1-18028-2   | WASHER, FLAT, REG M4                | 20  |
| - | - | 1   | 1   | -   | -   | 1   | 1   | 2119533-1   | STRIPPER, SIDE FEED                 | 19  |
| - | - | 1   | 1   | 1   | 1   | 1   | 1   | 2119806-1   | INSERT, SHEAR                       | 13  |
| - | - | 1   | 1   | 1   | 1   | 1   | 1   | 3-22280-3   | SPRING, COMPRESSION                 | 12  |
| - | - | 1   | 1   | 1   | 1   | 1   | 1   | 1-356885-4  | STOP, SHEAR                         | 11  |
| - | - | 1   | 1   | 1   | 1   | 1   | 1   | 2119805-1   | SHEAR HOLDER, FRONT                 | 10  |
| - | - | 1   | 1   | 1   | 1   | 1   | 1   | 1803095-1   | FLOATING SHEAR, FRONT               | 9   |
| 1 | 1 | 2   | 2   | 1   | 1   | 1   | 1   | 1803293-2   | ANVIL, COMBINATION DEUTSCH STYLE    | 8   |
| - | - | 1   | 1   | 1   | 1   | 1   | 1   | 3-240641-9  | SPACER                              | 7   |
| - | - | -   | -   | -   | -   | -   | -   | -           | -                                   | 6   |
| - | - | 1   | 1   | 1   | 1   | 1   | 1   | 2119757-8   | DEPRESSOR, SHEAR                    | 5   |
| - | - | 1   | 1   | 1   | 1   | 1   | 1   | 238011-9    | BLOCK, CRIMPER SPACER               | 4   |
| 1 | 1 | 2   | 2   | 1   | 1   | 1   | 1   | 1803019-4   | CRIMPER, INSULATION O               | 3   |
| 1 | - | 1   | 1   | 1   | 1   | 1   | 1   | 455888-3    | SPACER, CRIMPER                     | 2   |
| - | - | 1   | 2   | 2   | 1   | 1   | 1   | 2-1633713-6 | CRIMPER, WIRE PREMIUM               | 1   |

ATLANTIC VERSION  
Shown on sheets 1 of 4 & 2 of 4  
(Pacific version shown on sheets 3 of 4 & 4 of 4)

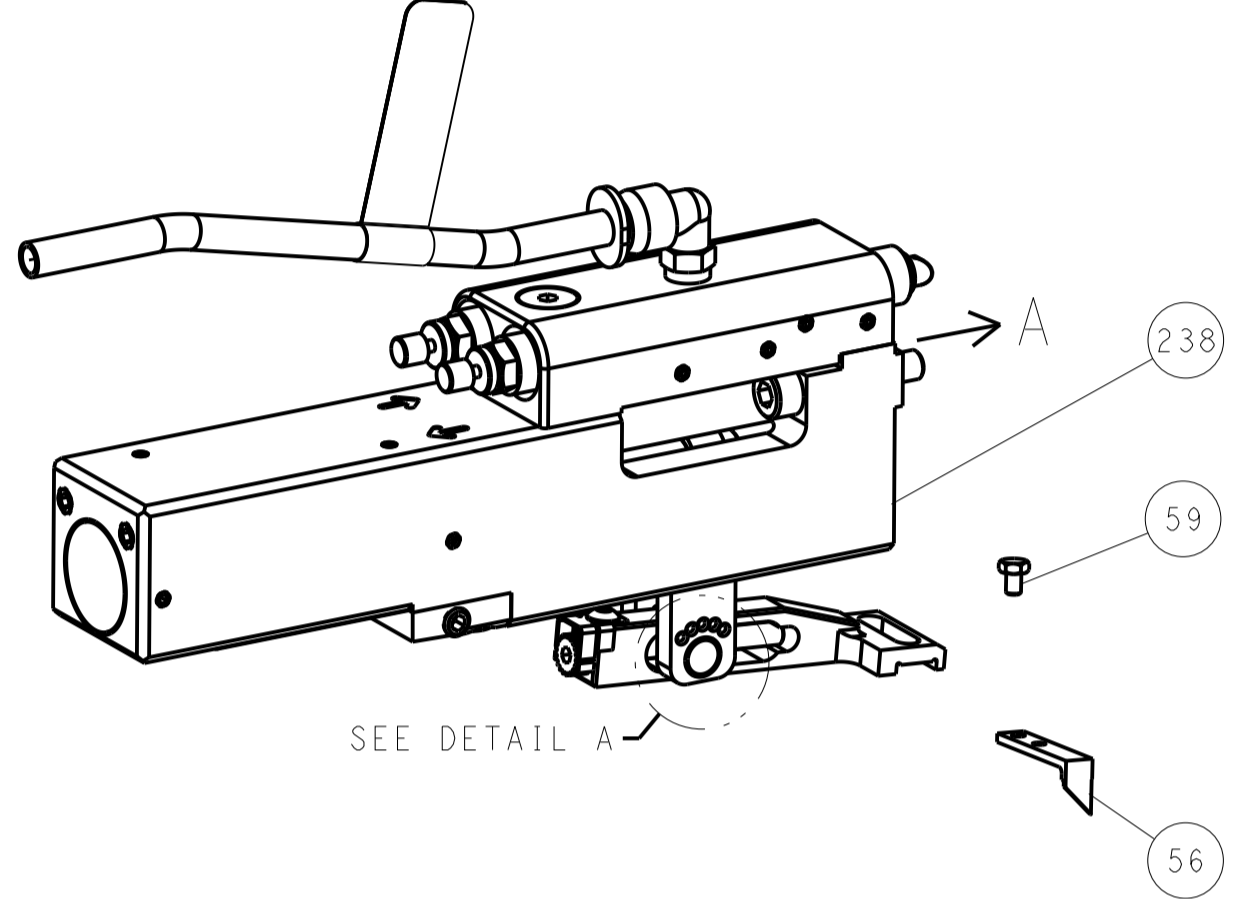
|                       |   |   |  |
|-----------------------|---|---|--|
| DIMENSIONS:<br>mm<br> | TOLERANCES UNLESS OTHERWISE SPECIFIED:<br>0 PLC ±<br>1 PLC ±<br>2 PLC ±<br>3 PLC ±<br>4 PLC ±<br>ANGLES ± | DWG: R. KNEPPER 03-Oct-13<br>CHK: G. BAILEY 03-Oct-13<br>APVD: M. CLIFFORD 03-Oct-13<br>PRODUCT SPEC<br>APPLICATION SPEC<br>WEIGHT<br>SCALE: 1:2<br>SHEET 1 OF 4<br>REV: F1 | TE Connectivity<br>Harrisburg, PA 17105-3608<br>Ocean Side Feed<br>Applicator<br>SIZE: A1<br>CAGE CODE: 00779<br>DRAWING NO: 2266101 |
|-----------------------|---|---|--|

| LOC |    | DIST |     | REVISIONS   |      |     |      |
|-----|----|------|-----|-------------|------|-----|------|
| A   | 66 | P    | LTM | DESCRIPTION | DATE | OWN | APVD |
|     |    | -    |     | SEE SHEET 1 | -    | -   | -    |

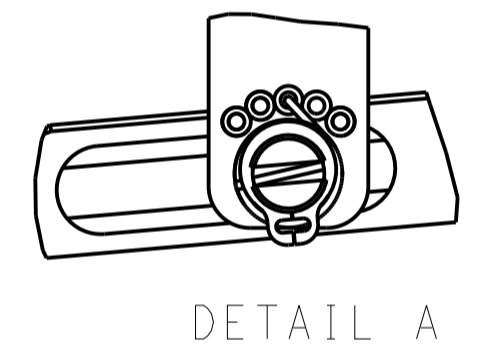
# FEED TYPE MECHANICAL



## PNEUMATIC

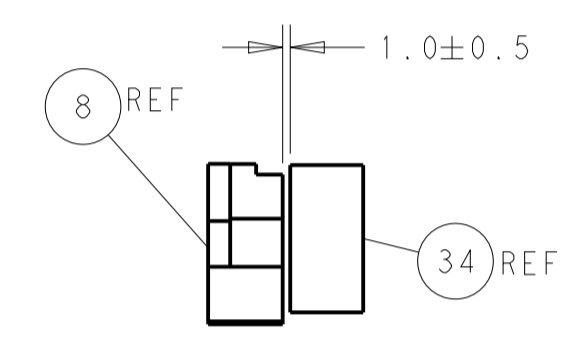
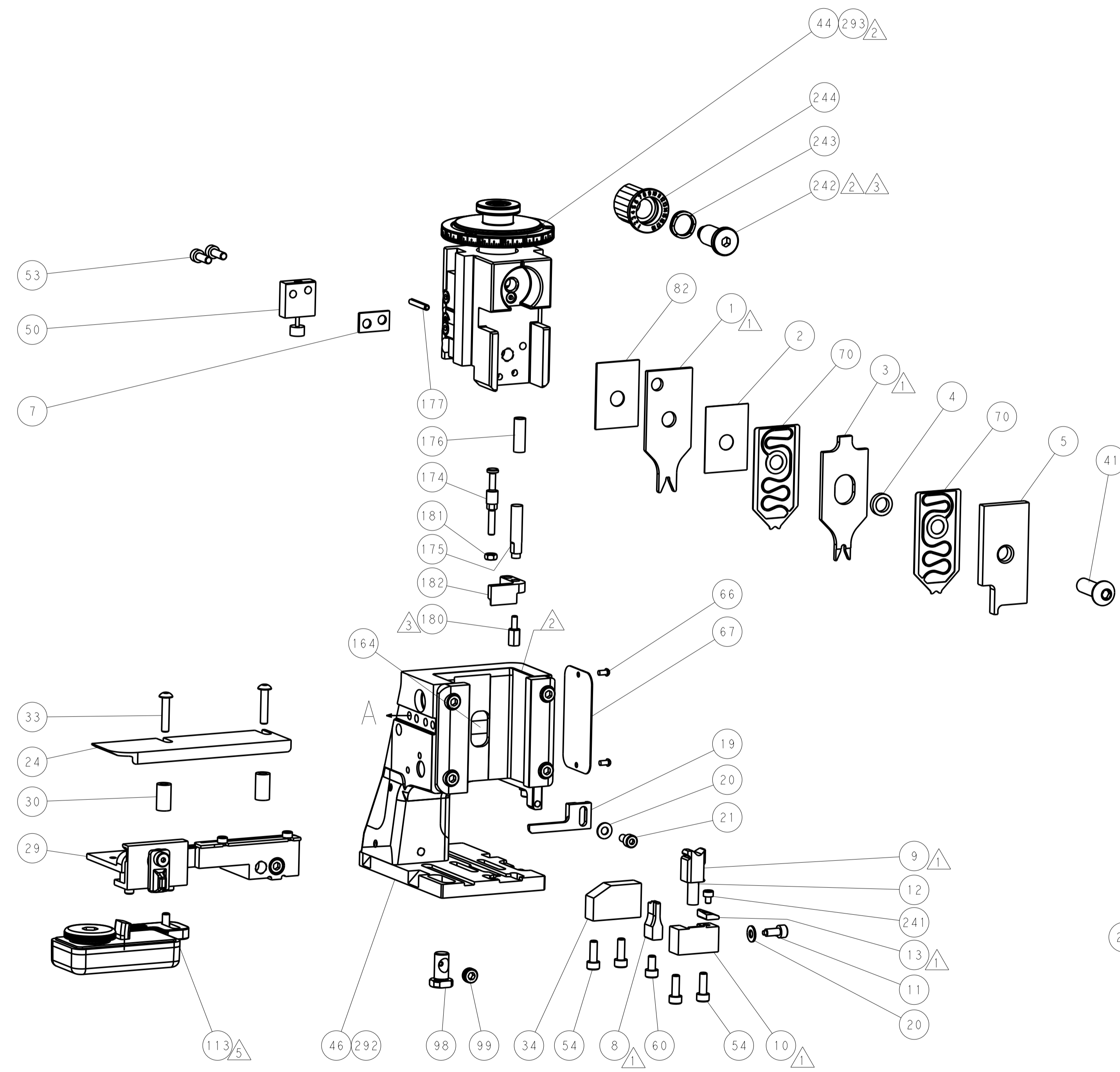
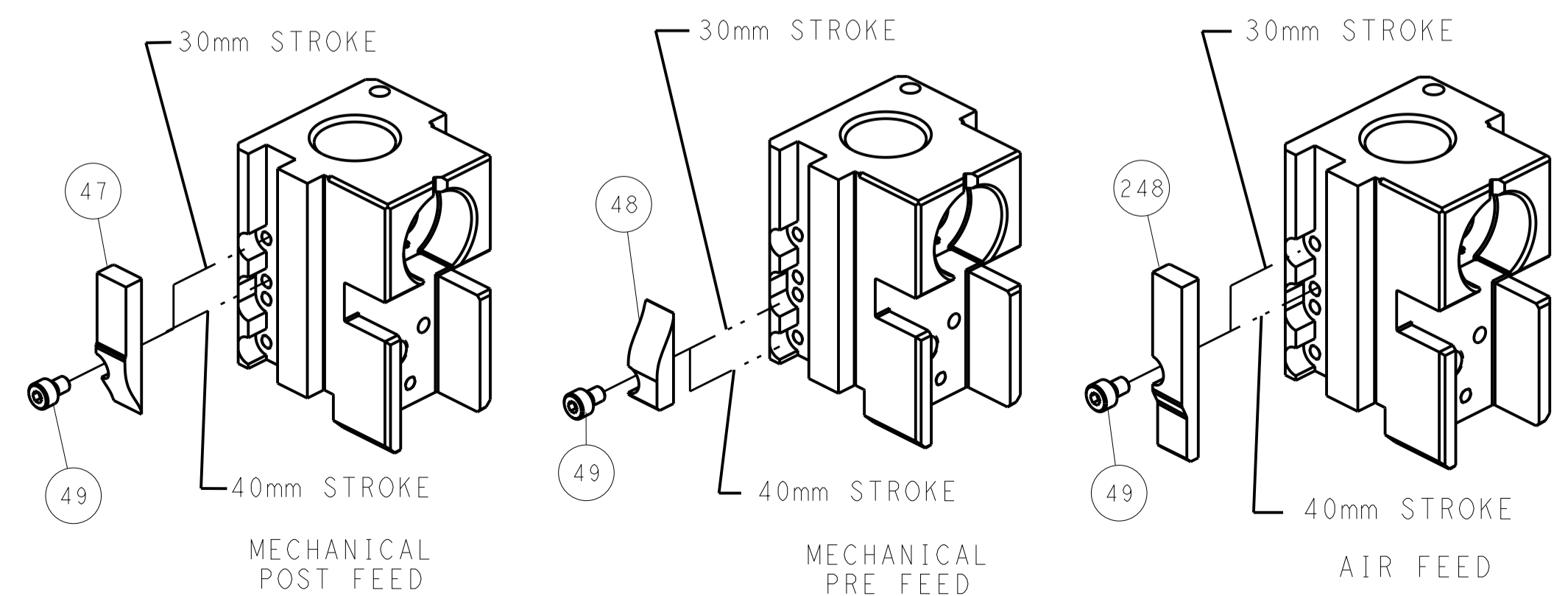


### FEED SPRING SETTING POSITION (SHOWN FROM REAR SIDE)

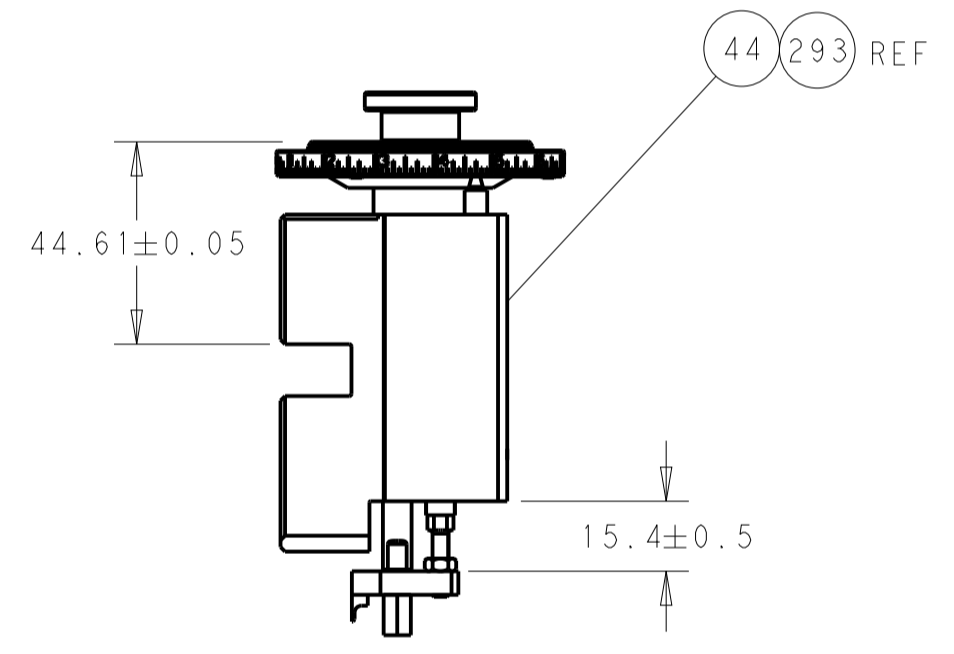


DETAIL A

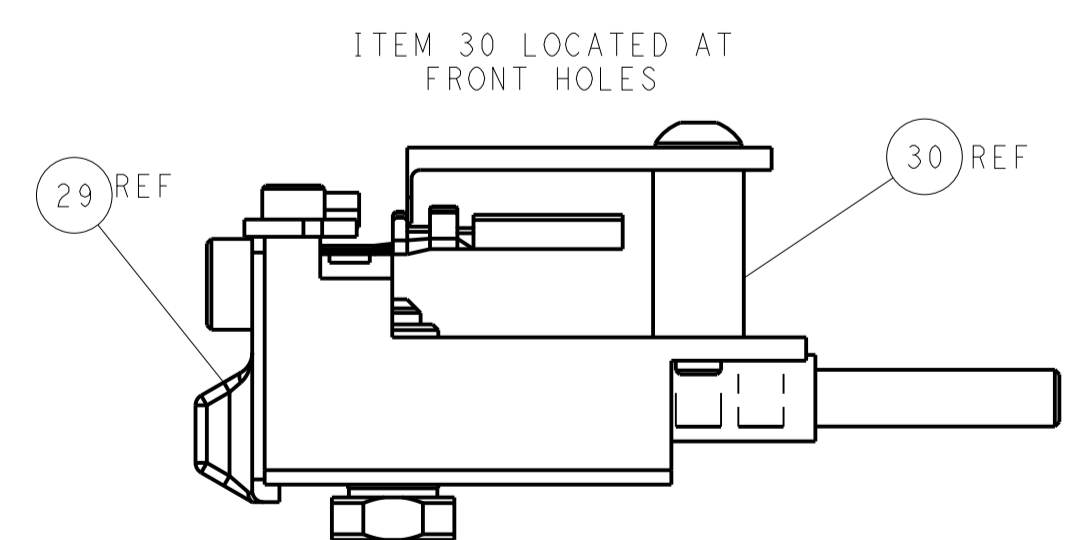
## CAM POSITIONS



TERMINAL SUPPORT LOCATION



RAM SET-UP



FEED TRACK POSITION GUIDE BY INSULATION BARREL

**ATLANTIC VERSION**  
 Shown on sheets 1 of 4 & 2 of 4  
 (Pacific version shown on sheets 3 of 4 & 4 of 4)

|             |        |  |  |                            |  |                 |                               |
|-------------|--------|--|--|----------------------------|--|-----------------|-------------------------------|
| DIMENSIONS: |        | TOLERANCES UNLESS OTHERWISE SPECIFIED: |  | DWN R. KNEPPER 03-Oct-13   |  | TE Connectivity |                               |
| mm          | 0 PLC  | ±                                      |  | CHK G. BAILEY 03-Oct-13    | Harrisburg, PA 17105-3608              |                 |                               |
|             | 1 PLC  | ±                                      |  | APVD M. CLIFFORD 03-Oct-13 | NAME                                   |                 |                               |
|             | 2 PLC  | ±                                      |  |                            | Ocean Side Feed                        |                 |                               |
|             | 3 PLC  | ±                                      |  |                            | Applicator                             |                 |                               |
|             | 4 PLC  | ±                                      |  |                            | SIZE CAGE CODE DRAWING NO              |                 | RESTRICTED TO                 |
|             | ANGLES | ±                                      |  |                            | A1 00779 ©=2266101                     |                 |                               |
| MATERIAL    | FINISH | WEIGHT                                 |  |                            | Customer Accessible Production Drawing |                 | SCALE 1:2 SHEET 2 OF 4 REV F1 |

| PART NUMBER | REVISION | DESCRIPTION               | FEED TYPE  |
|-------------|----------|---------------------------|------------|
| 2-2266101-1 | F        | FINE CRIMP HEIGHT ADJUST  | MECHANICAL |
| 2-2266101-2 | F        | FINE CRIMP HEIGHT ADJUST  | PNEUMATIC  |
| 7-2266101-7 | B        | CRIMP TOOLING KIT         | -          |
| 7-2266101-8 | B        | APPLICATOR CONVERSION KIT | -          |

PACIFIC VERSION TERMINATOR  
INTERFACE ADAPTER



| APPLICATOR DATA |                |      |
|-----------------|----------------|------|
| CRIMP           | SIZE           | TYPE |
| WIRE            | 2.29 mm [.090] | F    |
| INSUL           | 2.79 mm [.110] | O    |

| APPLICATOR CONVERSION KITS |                           |
|----------------------------|---------------------------|
| PART NUMBER                | INSULATION DIAMETER RANGE |
| 7-2266100-8                | Ø 3.05-3.81mm [.120-.150] |
| 7-2266101-8                | Ø 2.67-3.02mm [.105-.119] |
| 7-2266102-8                | Ø 2.26-2.64mm [.089-.104] |
| 7-2266103-8                | Ø 1.93-2.24mm [.076-.088] |
| 7-2266104-8                | Ø 1.60-1.91mm [.063-.075] |

| TERMINAL DATA: DEUTSCH TERMINAL            |            | TE CRIMP SPECIFICATION        |   |
|--|------------|-------------------------------|---|
| TERMINAL NAME: STAMPED CONTACT PIN SIZE 16 |            |                               |   |
| WIRE STRIP LENGTH                          |            | INSULATION DIAMETER RANGE     |   |
| 3.81-5.09 mm [.150-.200 IN]                |            | Ø 2.67-3.02 mm [.105-.119 IN] |   |
| TERMINAL APPLICATION SPECIFICATION         | 114-151000 | -                             | - |

| TERMINAL DATA: DEUTSCH TERMINAL               |            | TE CRIMP SPECIFICATION        |   |
|---|------------|-------------------------------|---|
| TERMINAL NAME: STAMPED CONTACT SOCKET SIZE 16 |            |                               |   |
| WIRE STRIP LENGTH                             |            | INSULATION DIAMETER RANGE     |   |
| 3.81-5.09 mm [.150-.200 IN]                   |            | Ø 2.67-3.02 mm [.105-.119 IN] |   |
| TERMINAL APPLICATION SPECIFICATION            | 114-151000 | -                             | - |

| TERMINALS APPLIED |                  |             |                  |
|-------------------|------------------|-------------|------------------|
| TE TERMINAL       | DEUTSCH TERMINAL | TE TERMINAL | DEUTSCH TERMINAL |
| 286505-1          | 1060-14-0122     | 286505-2    | 1060-14-0144     |
| 286505-3          | 1060-14-0177     | 285505-5    | 1060-14-1077     |
| 286505-6          | 1060-14-1088     | 286503-1    | 1060-16-0122     |
| 286503-2          | 1060-16-0144     | 286503-3    | 1060-16-0177     |
| 286503-7          | 1060-16-0722     | 286503-8    | 1060-16-0744     |
| 286503-9          | 1060-16-0777     | 1-286503-1  | 1060-16-0977     |
| 1-286503-2        | 1060-16-0988     | 1-286503-4  | AT60-14-0122     |
| 1-286503-5        | AT60-16-0144     |             | AT60-16-0122     |

| TERMINALS APPLIED |                  |             |                  |
|-------------------|------------------|-------------|------------------|
| TE TERMINAL       | DEUTSCH TERMINAL | TE TERMINAL | DEUTSCH TERMINAL |
| 286506-1          | 1062-14-0122     | 286506-2    | 1062-14-0144     |
| 286506-3          | 1062-14-0177     | 286506-7    | AT62-14-0122     |
| 286506-5          | 1062-14-1077     | 286506-6    | 1062-14-1088     |
| 286504-1          | 1062-16-0122     | 286504-2    | 1062-16-0144     |
| 286504-3          | 1062-16-0177     | 286504-7    | 1062-16-0722     |
| 286504-8          | 1062-16-0744     | 286504-9    | 1062-16-0777     |
| 1-286504-1        | 1062-16-0977     | 1-286504-2  | 1062-16-0988     |
| 1-286504-5        | AT62-16-0122     | 1-286504-6  | AT62-16-0144     |

| WIRE SIZE | CRIMP HEIGHT mm [INCH]             | CRIMP HEIGHT REFERENCE SETTING |
|-----------|------------------------------------|--------------------------------|
| 14 AWG    | 1.40+0.03/-0.05 [.055+.001/- .002] | 5.2                            |
| 2.00mm2   | 1.40+0.03/-0.05 [.055+.001/- .002] | 5.4                            |
| 1.50mm2   | 1.35+0.03/-0.05 [.053+.001/- .002] | 5.7                            |
| 16 AWG    | 1.27+0.03/-0.05 [.050+.001/- .002] | 6.5                            |
| 1.00mm2   | 1.27+0.03/-0.05 [.050+.001/- .002] | 6.6                            |
| 18 AWG    | 1.24+0.03/-0.05 [.049+.001/- .002] | 6.9                            |
| 0.75mm2   | 1.22+0.03/-0.05 [.048+.001/- .002] | 7.1                            |

**\*WARNING**  
ON INSTALLATION, SET WIRE DISC TO CRIMP HEIGHT REFERENCE SETTING FOR LARGEST WIRE SIZE. CRIMP HEIGHT REFERENCE SETTINGS GREATER THAN THE VALUE SHOWN MAY CAUSE DAMAGE TO THE CRIMP TOOLING. REFER TO THE INSTRUCTION SHEET FOR PROPER SETUP AND ADJUSTMENTS.

- RECOMMENDED SPARE PARTS
- REFER TO SUPPLIED INSTRUCTION SHEET FOR CLEANING, LUBRICATION AND STORAGE OF APPLICATOR.
- APPLY PART NUMBER 2-23419-6 LOCTITE TO THREADS OF ITEM 242.
- CRIMP HEIGHT REFERENCE SETTING WAS THE SETTING USED WHEN THE APPLICATOR WAS QUALIFIED AT THE FACTORY. ADJUSTMENT MAY BE NECESSARY WHEN RUNNING APPLICATOR IN THE FIELD.
- TERMINAL LUBRICANT IS RECOMMENDED.
- UNLESS SPECIFIED OTHERWISE TORQUE VALUES SHALL BE USED PER DOCUMENT, 101-35000.
- SEE APPROPRIATE APPLICATOR LOG SHEETS FOR APPLIED TERMINALS AND WIRE RANGE.

| LOC | DIST | REV | DATE | BY | APPV |
|-----|------|-----|------|----|------|
| A   | 66   | -   | -    | -  | -    |

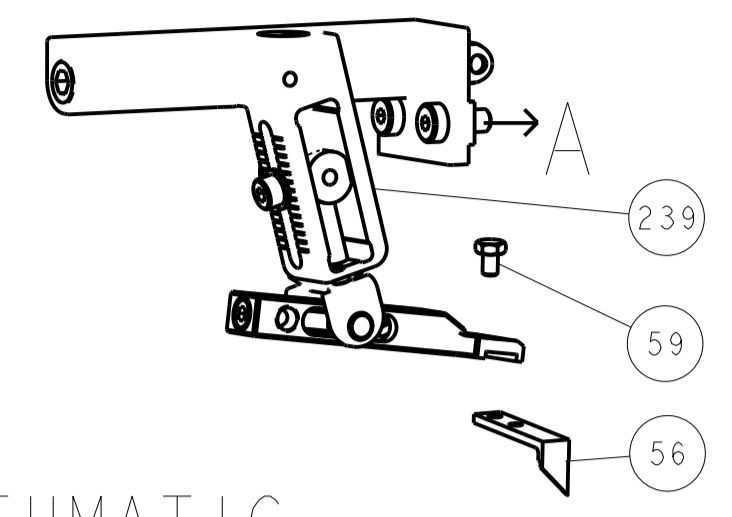
| QTY | REF | DESCRIPTION | DATE | BY          | APPV                                |     |
|-----|-----|-------------|------|-------------|-------------------------------------|-----|
| -   | -   | 1           | 1    | 2119082-9   | CAM, SNAIL, INSULATION ADJUSTMENT   | 244 |
| -   | -   | 1           | 1    | 2079764-1   | WASHER, WAVE SPRING, CREST-TO-CREST | 243 |
| -   | -   | 1           | 1    | 2119083-1   | RETAINER, INSULATION DIAL           | 242 |
| -   | -   | 1           | 1    | 7-18023-7   | SCR, SKT HD CAP M3 X 4.0            | 241 |
| -   | -   | -           | 1    | 2119580-1   | MECHANICAL FEED ASSEMBLY            | 239 |
| -   | -   | 1           | -    | 2844940-1   | AIR FEED MODULE                     | 238 |
| -   | -   | REF         | REF  | 994970-2    | COUNTER, MAGNETIC                   | 164 |
| -   | -   | 1           | -    | 2119641-2   | FEED CAM, AIR FEED                  | 151 |
| -   | -   | 1           | 1    | 2168083-8   | SCR, SKT HD CAP, RoHS, M4 X 16      | 144 |
| -   | -   | 4           | 4    | 2168083-9   | SCR, SKT HD CAP, RoHS, M4 X 20      | 143 |
| -   | -   | -           | 1    | 2119653-2   | FEED CAM, POST FEED                 | 142 |
| -   | -   | 1           | 1    | 1-1803583-0 | APPLICATOR BASIC ASSEMBLY, SF       | 141 |
| -   | -   | 1           | 1    | 1803516-1   | RAM ASSEMBLY, SF PACIFIC            | 140 |
| -   | -   | 1           | 1    | 2119955-1   | ASSY, LUBRICATOR, SIDE FEED         | 113 |
| -   | -   | 1           | 1    | 2844908-1   | SCREW, LOCKING                      | 99  |
| -   | -   | 1           | 1    | 2844907-1   | POST, LOCKING                       | 98  |
| 1   | -   | 1           | 1    | 455888-8    | SPACER, CRIMPER                     | 82  |
| 1   | -   | -           | -    | 2266101     | PRINT, APPLICATOR LOG SHEET         | 72  |
| -   | -   | 1           | 1    | 1803607-3   | DOCUMENTATION PACKAGE               | 71  |
| -   | -   | 2           | 2    | 2119791-9   | DEPRESSOR, WIRE                     | 70  |
| -   | -   | 1           | 1    | 2119740-1   | TAG, IDENTIFICATION                 | 67  |
| -   | -   | 2           | 2    | 2168078-1   | SCREW, DRIVE, RH, RoHS, 2 x .188    | 66  |
| -   | -   | 1           | 1    | 5-18022-5   | SCR, HEX HD CAP, M4 X 6.0           | 59  |
| -   | -   | 1           | 1    | 1338685-1   | PAWL, FEED                          | 56  |
| -   | -   | 2           | 2    | 2168083-3   | SCR, SKT HD CAP, RoHS, M4 X 12.0    | 53  |
| -   | -   | 1           | 1    | 1803382-6   | HOLD DOWN, SPRING LOADED            | 50  |
| -   | -   | 1           | 2    | 18023-9     | SCR, SKT HD CAP M4 X 6.0            | 49  |
| -   | -   | -           | 1    | 2119652-1   | FEED CAM, PRE FEED                  | 48  |
| -   | -   | 1           | 1    | 1803602-1   | SCR, BHSC, RoHS (M8 X 25)           | 41  |
| -   | -   | 1           | 1    | 1752356-1   | SUPPORT, TERMINAL                   | 34  |
| -   | -   | 2           | 2    | 2079383-5   | SCR, BHSC, RoHS (M4 X 20)           | 33  |
| -   | -   | 2           | 2    | 2-2844962-8 | SPACER, CYLINDRICAL, STRIP GUIDE    | 30  |
| -   | -   | 1           | 1    | 2844992-1   | ASSEMBLY, STRIP GUIDE               | 29  |
| -   | -   | 1           | 1    | 1320928-2   | STRIP GUIDE                         | 24  |
| -   | -   | 1           | 1    | 2168083-2   | SCR, SKT HD CAP, RoHS, M4 X 8.0     | 21  |
| -   | -   | 2           | 2    | 1-18028-2   | WASHER, FLAT, REG M4                | 20  |
| -   | -   | 1           | 1    | 2119533-1   | STRIPPER, SIDE FEED                 | 19  |
| -   | -   | 1           | 1    | 2119806-1   | INSERT, SHEAR                       | 13  |
| -   | -   | 1           | 1    | 3-22280-3   | SPRING, COMPRESSION                 | 12  |
| -   | -   | 1           | 1    | 1-356885-4  | STOP, SHEAR                         | 11  |
| -   | -   | 1           | 1    | 2119805-1   | SHEAR HOLDER, FRONT                 | 10  |
| -   | -   | 1           | 1    | 1803095-1   | FLOATING SHEAR, FRONT               | 9   |
| 1   | 1   | 1           | 1    | 1803293-2   | ANVIL, COMBINATION DEUTSCH STYLE    | 8   |
| -   | -   | 1           | 1    | 3-240641-9  | SPACER                              | 7   |
| -   | -   | -           | -    | -           | -                                   | 6   |
| -   | -   | 1           | 1    | 2119757-8   | DEPRESSOR, SHEAR                    | 5   |
| -   | -   | 1           | 1    | 238011-9    | BLOCK, CRIMPER SPACER               | 4   |
| 1   | 1   | 1           | 1    | 1803019-4   | CRIMPER, INSULATION O               | 3   |
| 1   | -   | 1           | 1    | 455888-3    | SPACER, CRIMPER                     | 2   |
| -   | -   | 1           | 1    | 2-1633713-6 | CRIMPER, WIRE PREMIUM               | 1   |

PACIFIC VERSION  
Shown on sheets 3 of 4 & 4 of 4  
(Atlantic version shown on sheets 1 of 4 & 2 of 4)

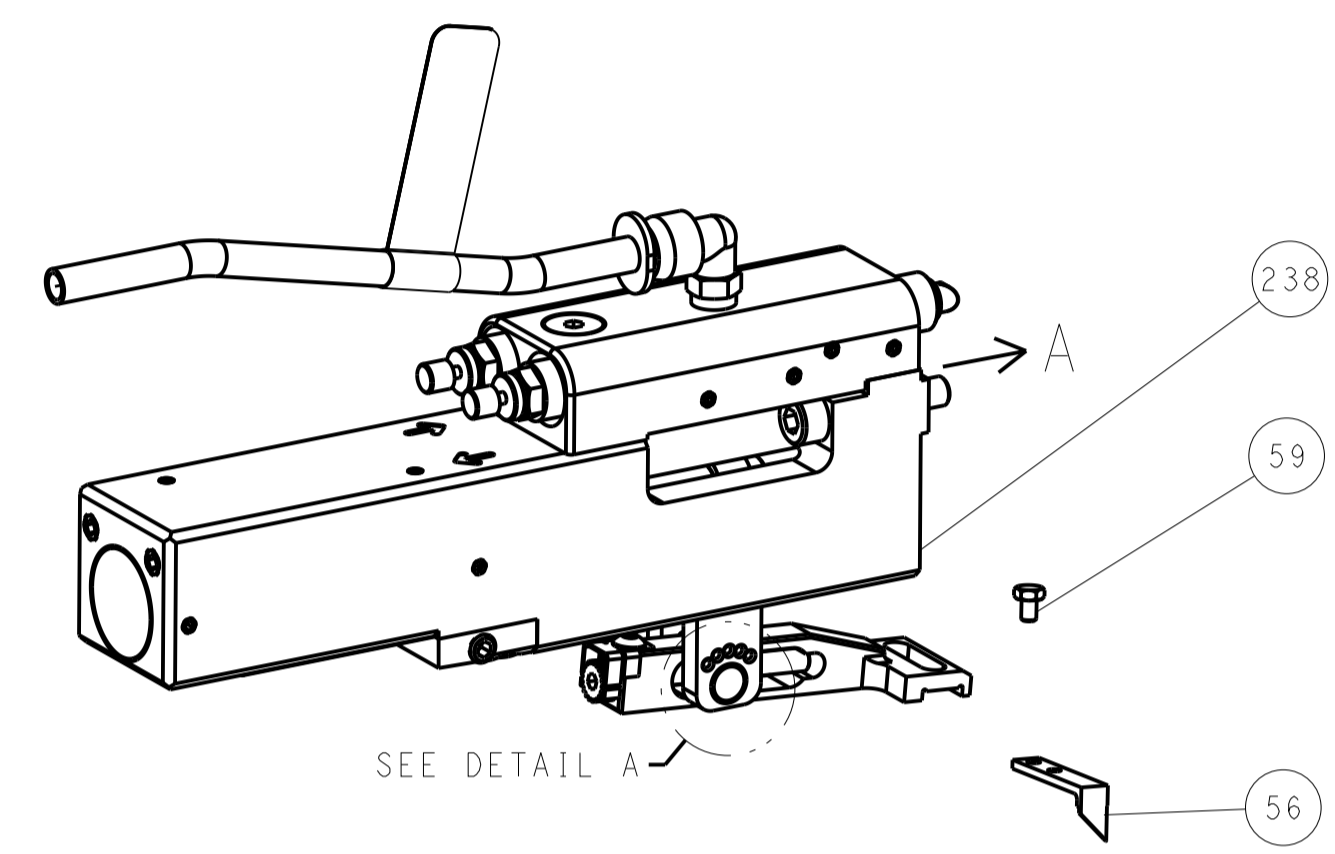
|                |   |  |   |                             |   |                          |   |                            |   |                                  |                  |
|----------------|---|--|---|-----------------------------|---|--------------------------|---|----------------------------|---|----------------------------------|------------------|
| DIMENSIONS: mm |   | TOLERANCES UNLESS OTHERWISE SPECIFIED: |   | DRAWN: R. KNEPPER 03-Oct-13 |   | CHK: G. BAILEY 03-Oct-13 |   | APV: M. CLIFFORD 03-Oct-13 |   | NAME: Ocean Side Feed Applicator |                  |
| 0 PLC          | ± | 1 PLC                                  | ± | 2 PLC                       | ± | 3 PLC                    | ± | 4 PLC                      | ± | SIZE: A1                         | CAGE CODE: 00779 |
| MATERIAL: -    |   | FINISH: -                              |   | WEIGHT: -                   |   | SCALE: 1:2               |   | SHEET: 3 OF 4              |   | REV: F1                          |                  |

| LOC |  | DIST |  | REVISIONS |             |    |      |
|-----|--|------|--|-----------|-------------|----|------|
| A   |  | 66   |  | REV       | DATE        | BY | APPV |
|     |  |      |  | 1         | SEE SHEET 1 |    |      |

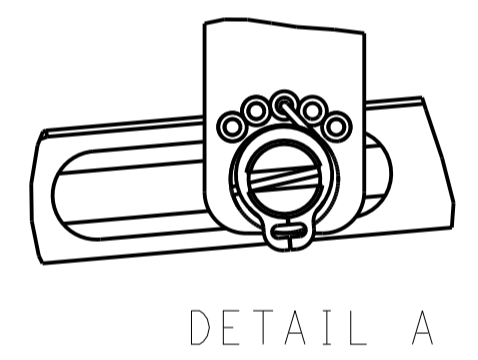
# FEED TYPE MECHANICAL



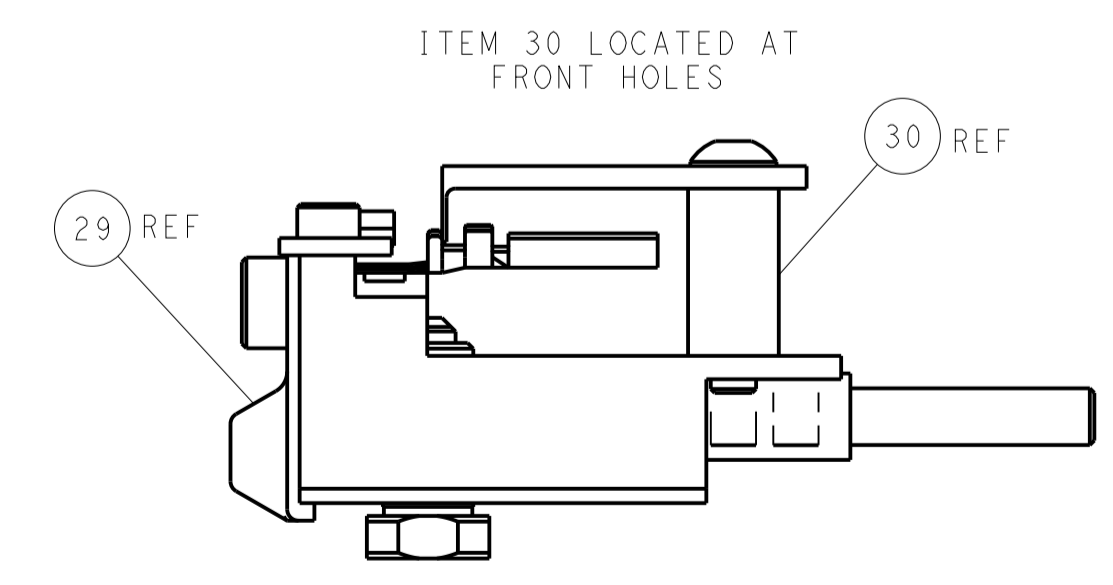
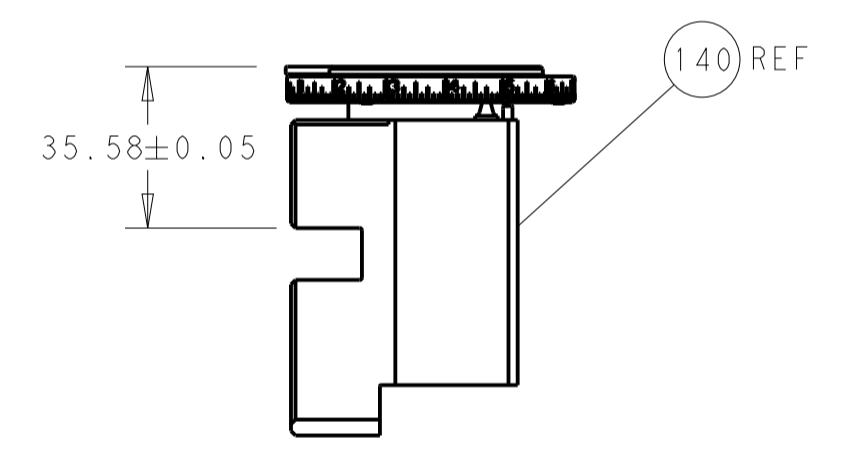
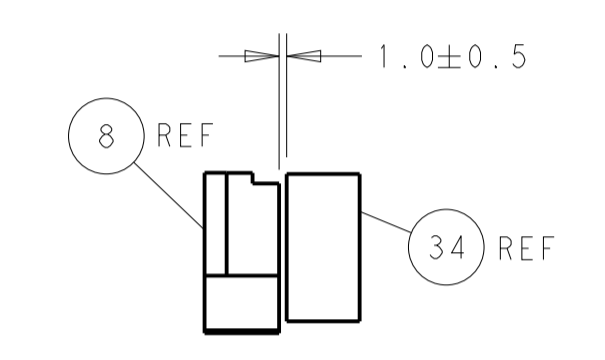
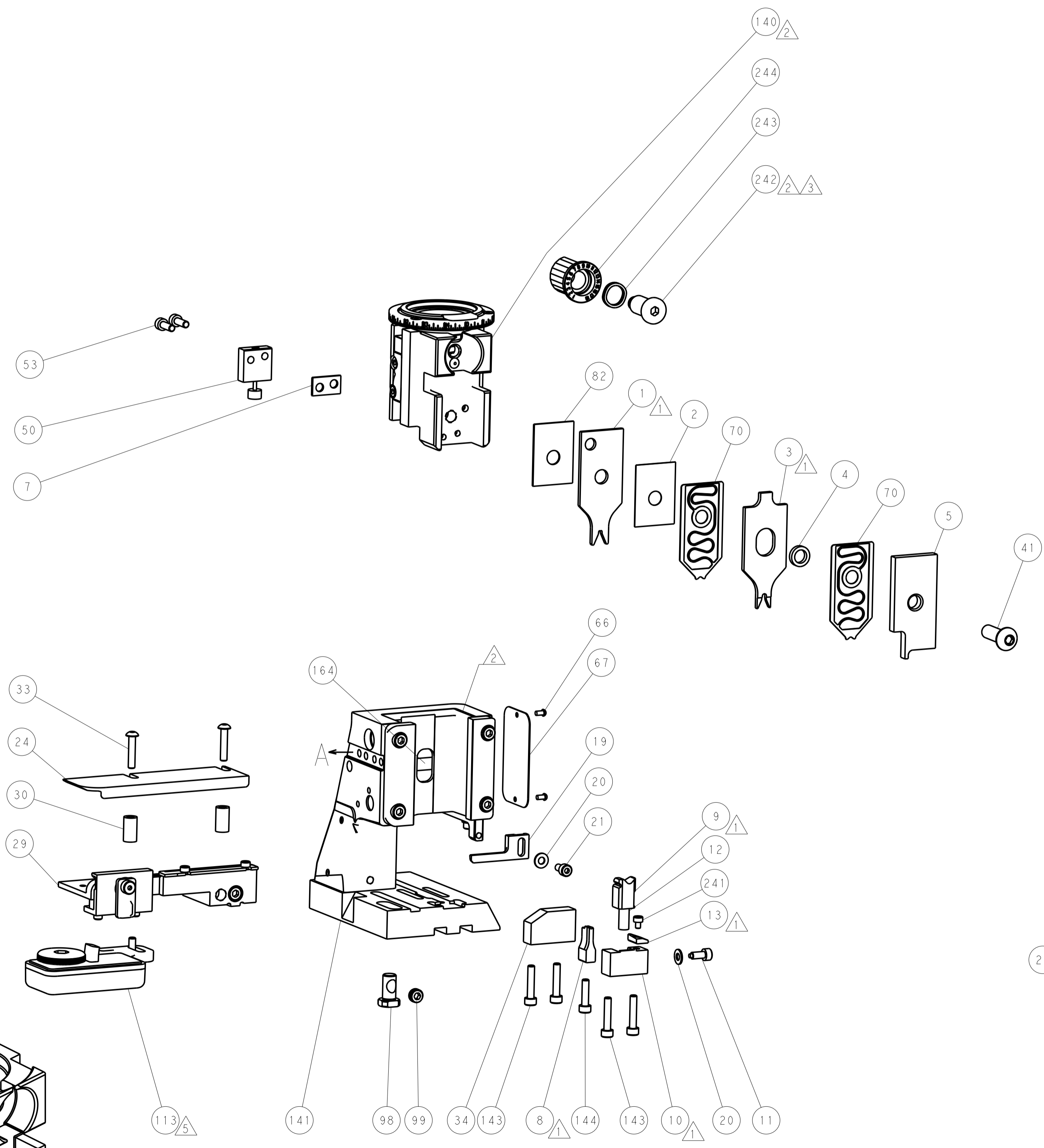
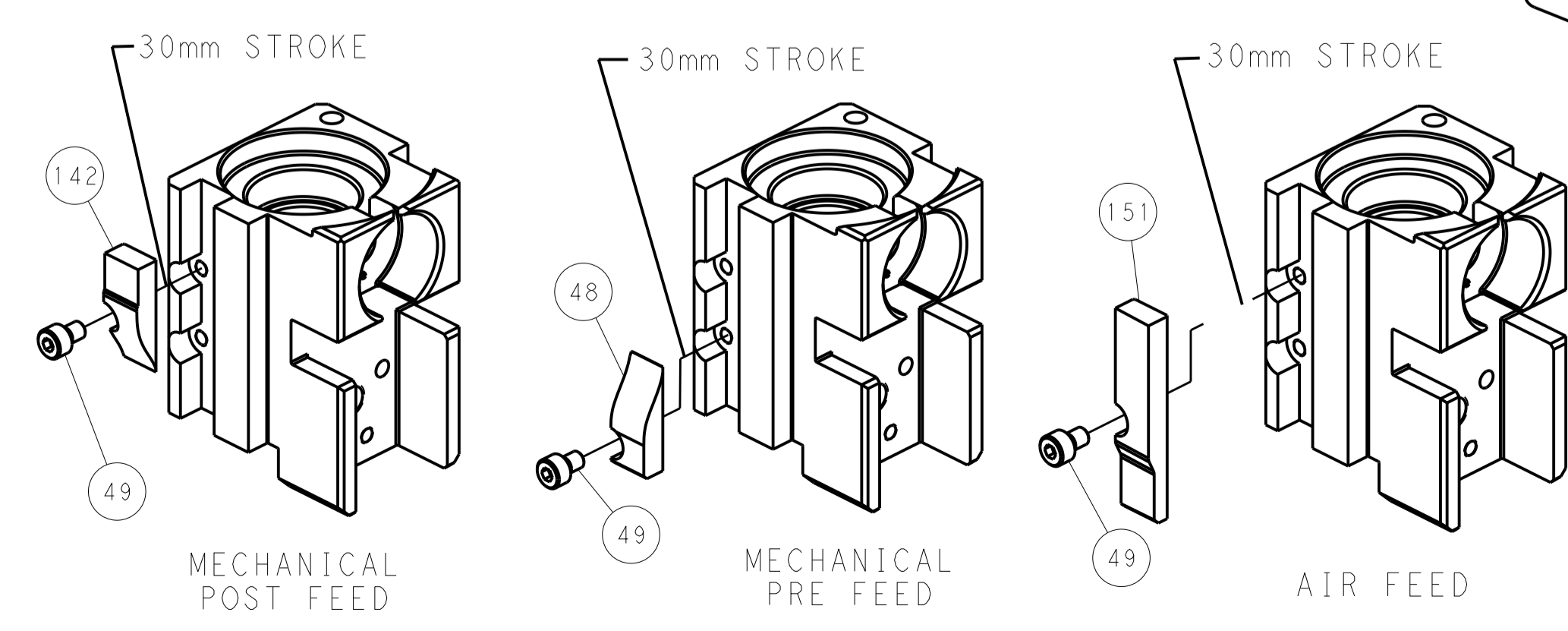
## PNEUMATIC



## FEED SPRING SETTING POSITION (SHOWN FROM REAR SIDE)



# CAM POSITIONS



**PACIFIC VERSION**  
 Shown on sheets 3 of 4 & 4 of 4  
 (Atlantic version shown on sheets 1 of 4 & 2 of 4)

|             |  |  |  |  |  |                                  |  |
|-------------|--|--|--|--|--|----------------------------------|--|
| DIMENSIONS: |  | TOLERANCES UNLESS OTHERWISE SPECIFIED: |  | DWG: R. KNEPPER 03-Oct-13              |  | TE Connectivity                  |  |
| mm          |  | 0 PLC ±                                |  | CHK: G. BAILEY 03-Oct-13               |  | Harrisburg, PA 17105-3608        |  |
| Ø           |  | 1 PLC ±                                |  | APPV: M. CLIFFORD 03-Oct-13            |  | NAME: Ocean Side Feed Applicator |  |
| FINISH:     |  | 2 PLC ±                                |  | PRODUCT SPEC:                          |  | SIZE: CAGE CODE: DRAWING NO:     |  |
| MATERIAL:   |  | 3 PLC ±                                |  | APPLICATION SPEC:                      |  | RESTRICTED TO:                   |  |
|             |  | 4 PLC ±                                |  | WEIGHT:                                |  | A   00779   C=2266101            |  |
|             |  | ANGLES:                                |  | Customer Accessible Production Drawing |  | SCALE: 1:2 SHEET 4 OF 4 REV: 1   |  |