



NO: NT-080 **PRODUCT:** NB-Series HMI Software
DATE: July 2013 **TYPE:** Modification Notice

NB-Designer V1.234 Update Now Available for Download

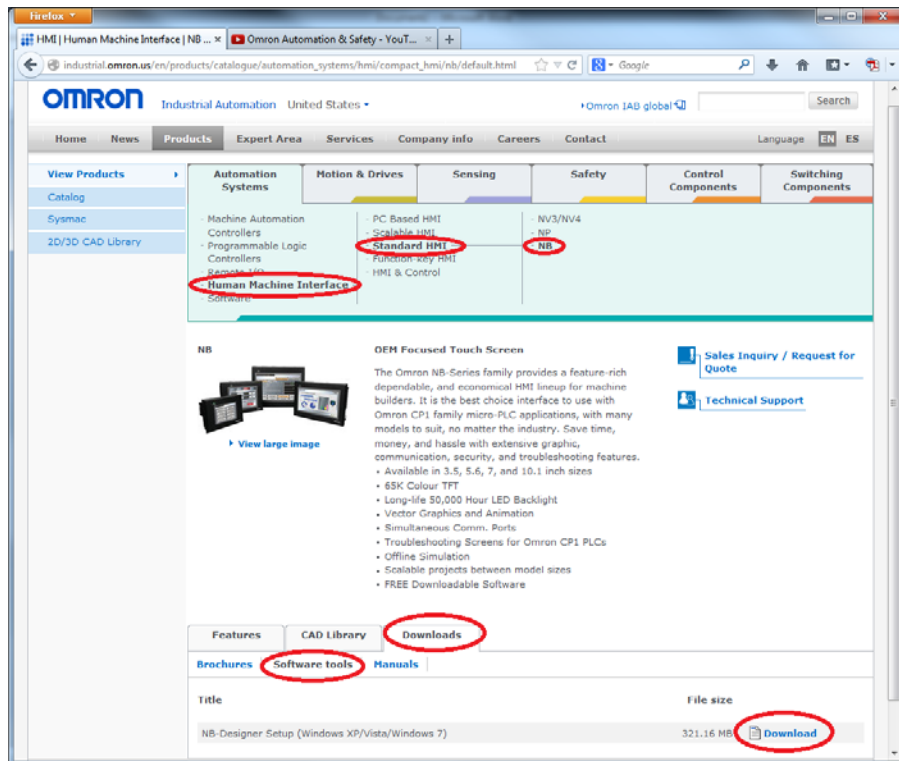
Omron's latest touchscreen Human Machine Interface (HMI) is the NB-Series programmable terminal. These high-functionality and competitively priced units give our distributors and sales teams the perfect HMI pairing with Omron's renowned CP1 Micro PLC line for simple applications.

The NB-Designer software for NB-Series HMIs is downloadable directly from the omron247.com website. This latest version of the no-charge software has been updated with significantly improved English labeling and manuals. Omron encourages all users of previous versions to update.



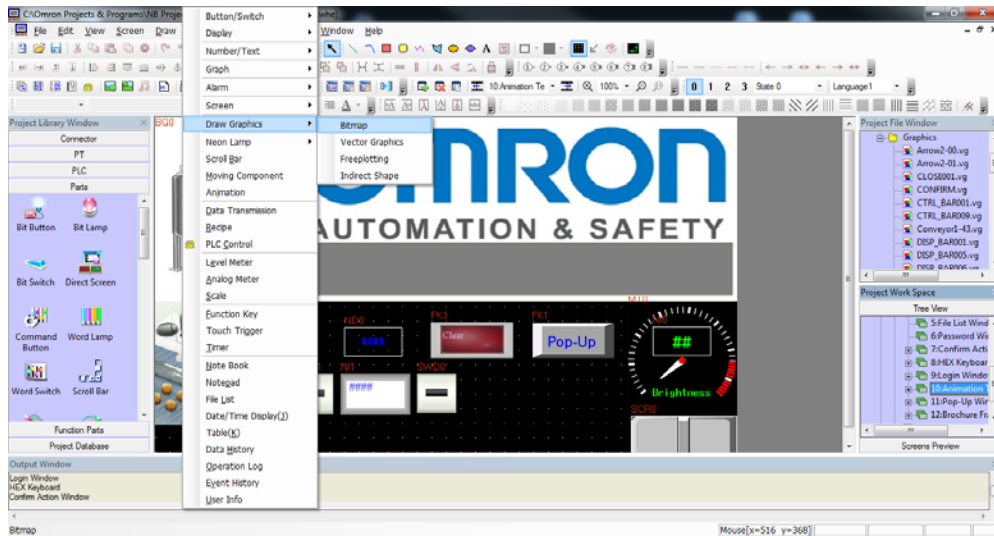
Where to Download?

NB-Designer can be downloaded directly from the **Standard HMI – NB** product section of the Pan-American website.



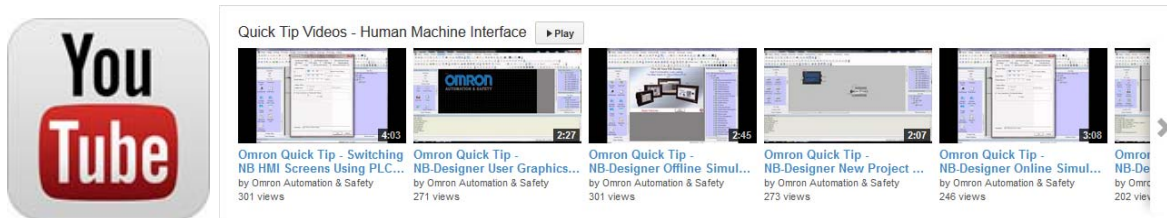
What's New?

Citing customer feedback, English labels and prompts have been significantly improved for more intuitive operation. These improvements have also been made to the manuals, automatically installed with the software (available in the *Help* menu).



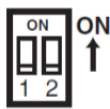
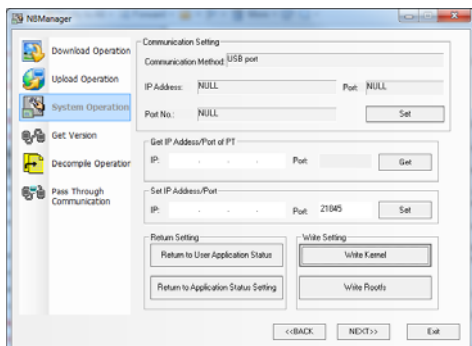
New to NB-Designer?

Omron Automation & Safety publishes *Quick Tip Videos* to our public YouTube Channel: www.youtube.com/user/OmronAutomationTech. These Quick Tip Videos are meant to supplement the product manuals as a first line of self-support tools for new users. Using the [Quick Tip Videos - Human Machine Interface](#) Playlist, learn how to get started with a new NB-Designer project, add custom graphics, and more. New *Quick Tip Videos* are being added continuously. We encourage you to share these videos directly with customers.



Updating NB HMI Firmware

To use some of the new functions of NB-Designer V1.22 and higher, it may be necessary to update the NB HMI firmware. Set the DIP switches on the back of the NB HMI to *Download Mode*, and then use NBManager to Write Kernel and Write Rootfs. Compile the project then re-download.



SW1	SW2	Operating modes
ON	ON	System Setting Mode
OFF	ON	Calibrate Mode
ON	OFF	Downloader Mode
OFF	OFF	User Project Mode