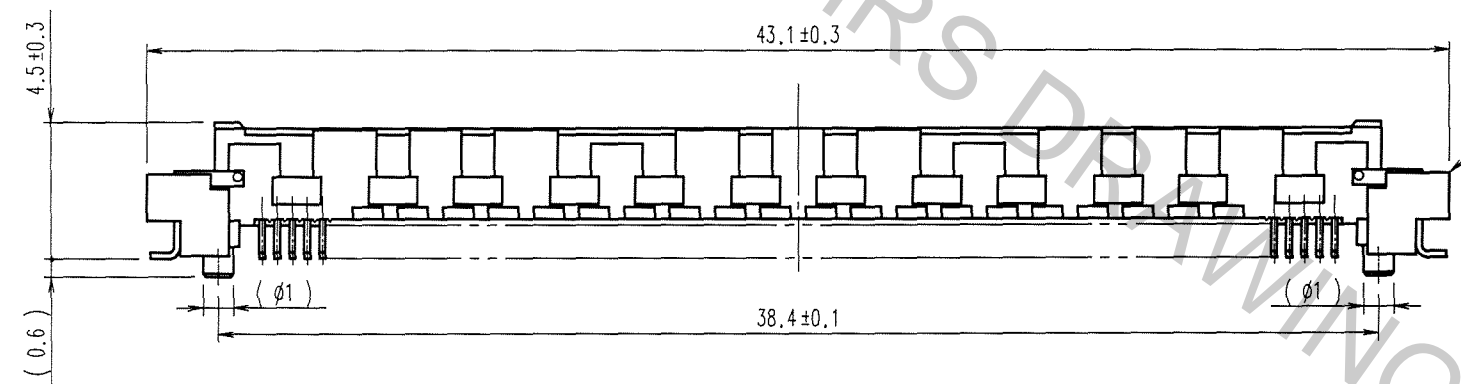
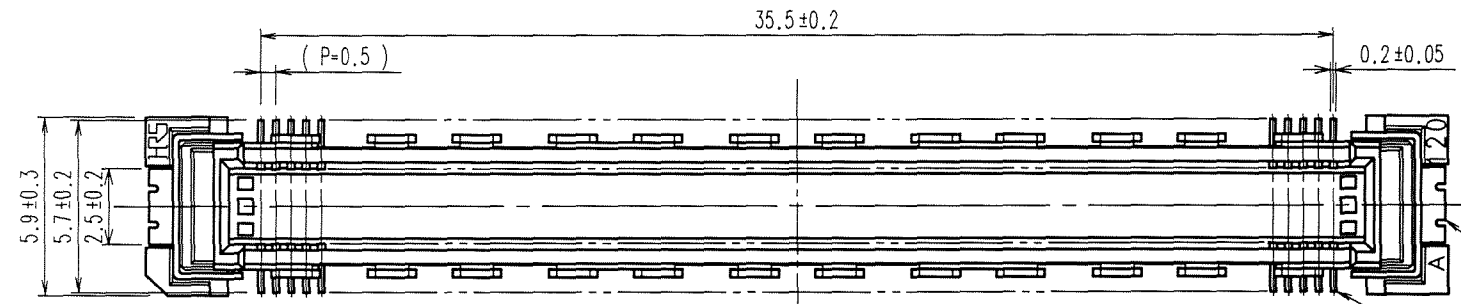
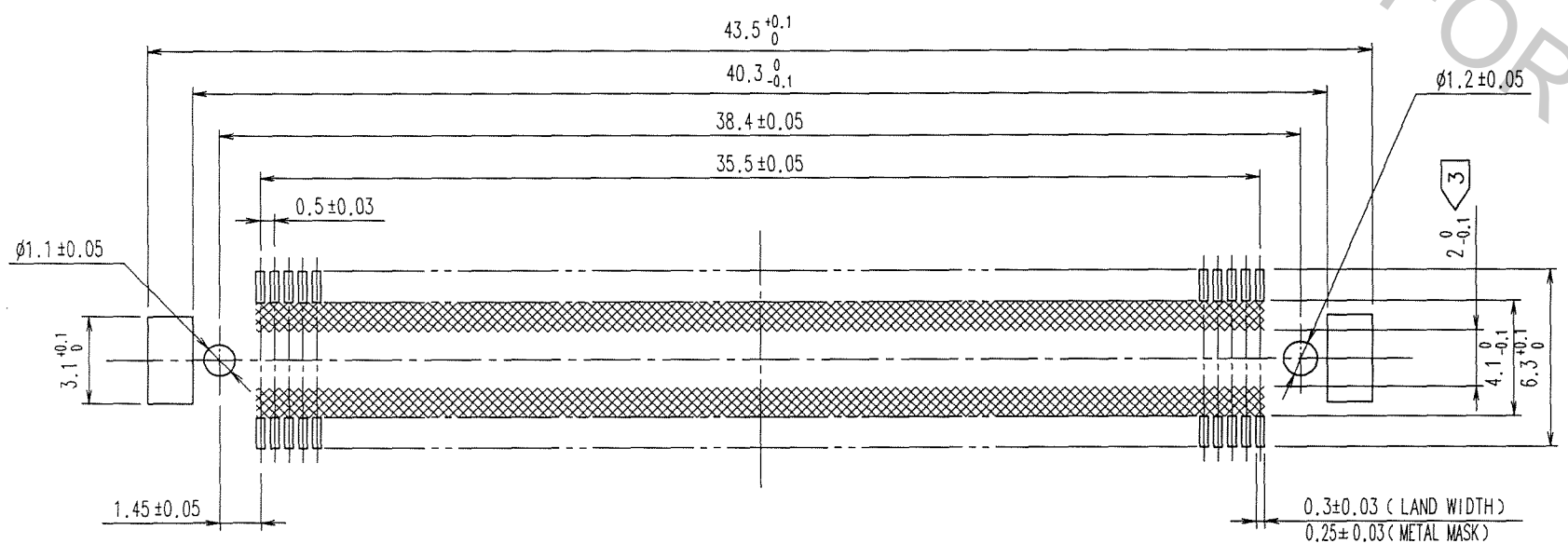


Apr.1.2017 Copyright 2017 HIROSE ELECTRIC CO., LTD. All Rights Reserved.

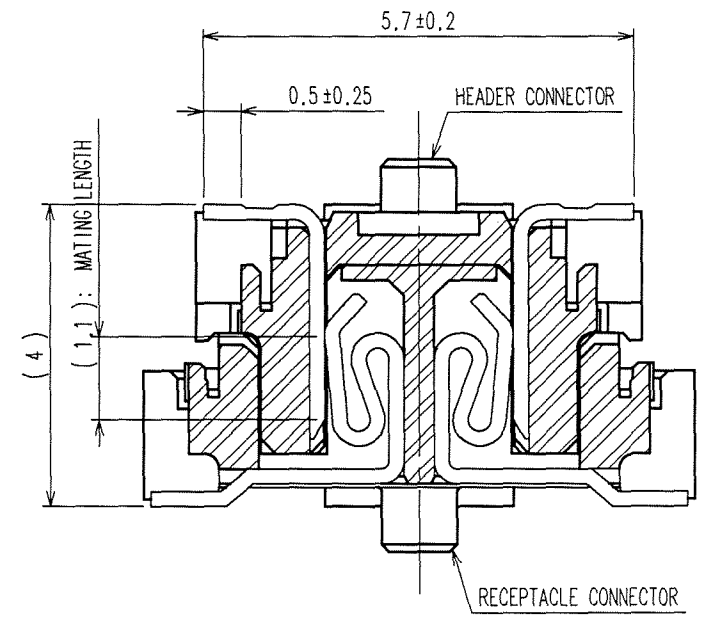
COUNT	DESCRIPTION OF REVISIONS	BY	CHKD	DATE	COUNT	DESCRIPTION OF REVISIONS	BY	CHKD	DATE



RECOMMENDED LAND PATTERN



CROSS-CUT SECTION (10:1)



NOTES

- SMT LEAD-COPLANARITY: 0.1 MAX.
- THIS PRODUCT HAS NO POLARITY TO MOUNT ON THE RECOMMENDED LAND PATTERN.
- NO PATTERN SHALL BE DESIGNED IN THIS AREA , TO PREVENT CONTACTS FROM BEING TOUCHED WITH PATTERN.
- THE DIMENSIONS IN PARENTHESES ARE FOR REFERENCE.

TO

1	LCP	BEIGE	UL94V-0	3	PHOSPHOR BRONZE	TIN-PLATING
NO.	MATERIAL	FINISH, REMARKS		NO.	MATERIAL	FINISH, REMARKS
CODE NO. (OLD)	CL			2	PHOSPHOR BRONZE	CONTACT AREA : GOLD 0.1μ m min. LEAD AREA : TIN-PLATING 1μ m min. UNDER PLATING : NICKEL 1μ m min.
DRAWN	DESIGNED	CHECKED	APPROVED	RELEASED		
K.DOI	M. Doi	X. Oyama	H. Okawa			
06.04.17	06.04.17	06.04.18	06.04.18			
SCALE	DRAWING NO.		PART NO.			
4 : 1	EDC3-151970-25		FX10A-144P-SV1(71)			
UNITS	HRS HIROSE ELECTRIC CO., LTD		CODE NO.			
mm			CL570-0143-0-71		1/1	