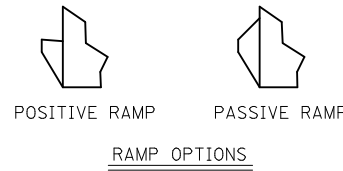
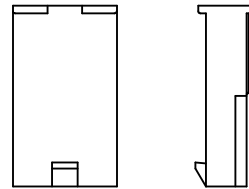
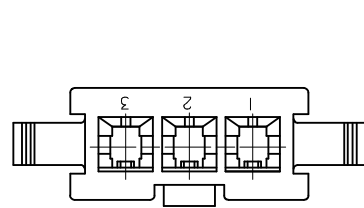
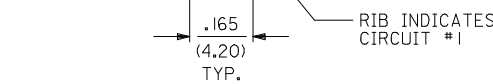
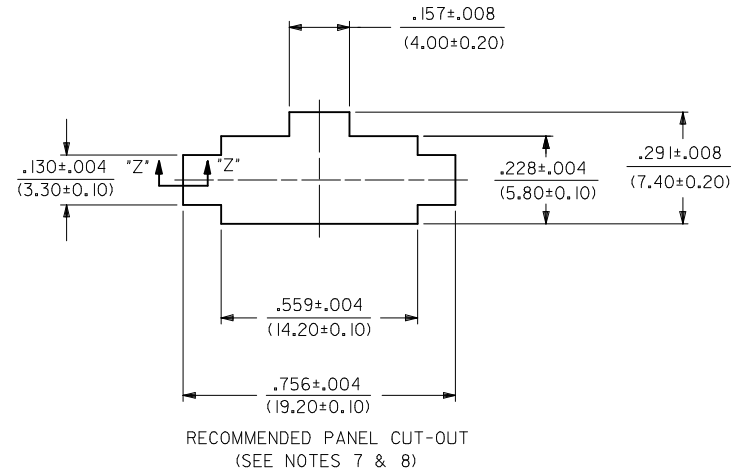
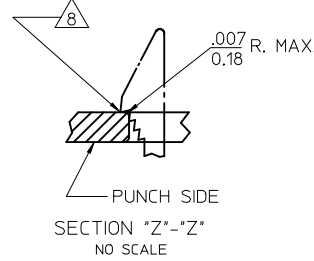
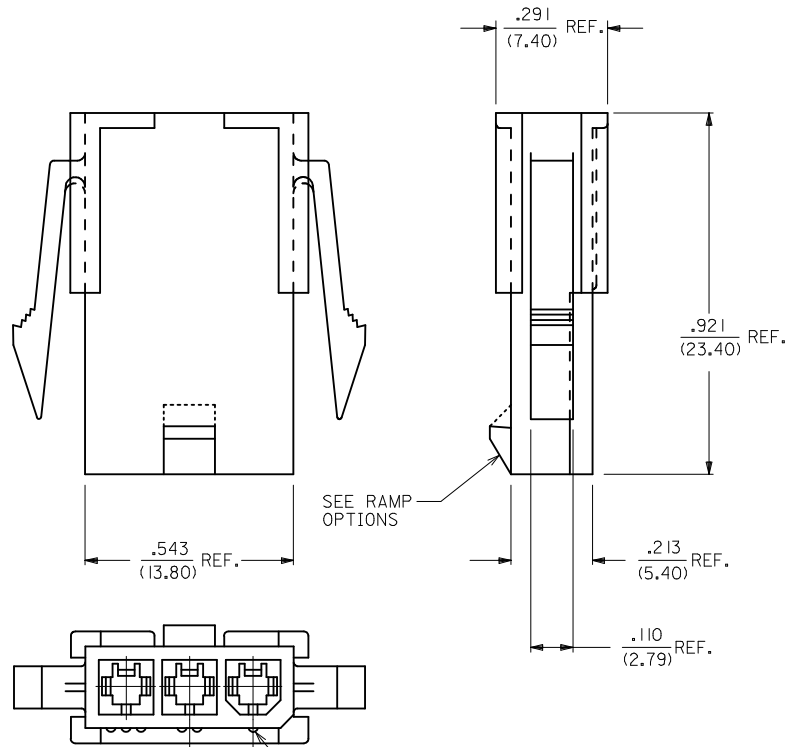


PART NO.	ENG. NO.	CKT. NO.	MOUNT OPTION	MAT'L.	RAMP OPTION
50-29-1663	5559-03P3-225	3	3	225	POSITIVE
50-36-1893	5559-03P2-225	3	2	225	POSITIVE



5559-03P3-***
WITHOUT MOUNTING EARS



LEGEND

5559-03P*-225

- MATERIAL
- MOUNTING & RAMP OPTION (SEE NOTE 9)
- PLUG
- CIRCUIT SIZE
- BASE NUMBER

NOTES:

- MATERIAL:
"225" = NYLON 6, UL94V-0, IEC 60335-1, 4TH EDITION GLOW WIRE CAPABLE, COLOR: BLACK.
- FINISH: NOT APPLICABLE
- PRODUCT SPECIFICATION: PS-5556-001
- PACKAGING: BULK
- THIS PART MATES WITH MOLEX RECEPTACLE #5557-03R2-225.
- THIS PART IS FOR USE WITH MOLEX MALE TERMINAL NO. 5558-*
- PANEL MOUNT VERSION IS FOR USE WITH .031/.079 (0.80/2.00) THICK PANELS.
- PANEL SHOULD BE PUNCHED IN THE DIRECTION OF CONNECTOR INSERTION.
- MOUNTING & RAMP OPTION: 2 = WITH EARS, WITH POSITIVE RAMP
3 = WITHOUT EARS, WITH POSITIVE RAMP
4 = WITH EARS, WITH PASSIVE RAMP
5 = WITHOUT EARS, WITH PASSIVE RAMP
- CONNECTORS ARE NOT TO BE MATED OR UNMATED WHILE CIRCUITS ARE LIVE.
- WIRES ARE TO BE DRESSED IN SUCH A MANNER TO ALLOW THE TERMINALS TO FLOAT FREELY IN THE POCKET.
- PART CONFORMS TO CLASS 'B' REQUIREMENTS OF COSMETIC SPECIFICATION PS-45499-002 WITH THE EXCEPTION OF DISCOLORATION. FLASH AND SINK MEET CLASS 'C' REQUIREMENTS.

REV	DESCRIPTION	QUALITY SYMBOLS	GENERAL TOLERANCES (UNLESS SPECIFIED)		DIMENSION STYLE		SCALE	DESIGN UNITS	THIRD ANGLE PROJECTION	
			mm	INCH	IN/MM	DATE				
A1	ADD SECTION Z-Z EC NO: UCP2013-4208 DRAWN: NGUYEN 2014/01/03 CHKD: BELL 2014/01/03 APPR: FSMITH 2014/05/16	▽=0 ▽=0 ▽=0	4 PLACES ± ---	± ---	DRAWN BY GAVERRILL	DATE 2008/07/23	4:1	METRIC	MINI-FIT JR. SERIES, 3 CKT. PLUG	
			3 PLACES ± ---	± .010	CHECKED BY SSOUSEK	DATE 2008/07/23				
			2 PLACES ± 0.25	± .015	APPROVED BY FSMITH	DATE 2014/05/16			molex	
			1 PLACE ± 0.38	± ---						
			0 PLACE ± ---	± ---					SD-5559-225	
			ANGULAR ±1/2°		MATERIAL NO.		DOCUMENT NO.		SHEET NO.	
			DRAFT WHERE APPLICABLE MUST REMAIN WITHIN DIMENSIONS		SEE CHART				1 OF 1	
			THIS DRAWING CONTAINS INFORMATION THAT IS PROPRIETARY TO MOLEX INCORPORATED AND SHOULD NOT BE USED WITHOUT WRITTEN PERMISSION							