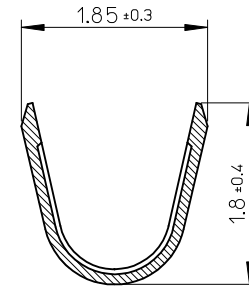
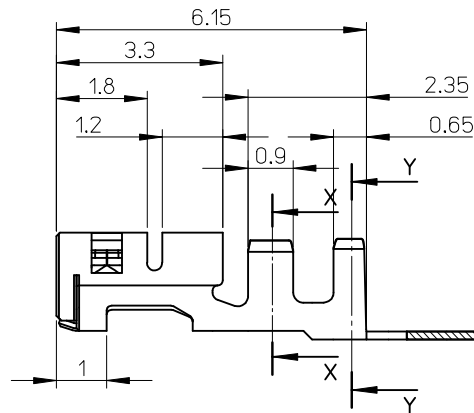
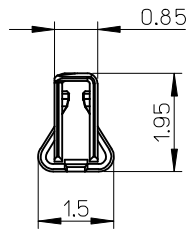
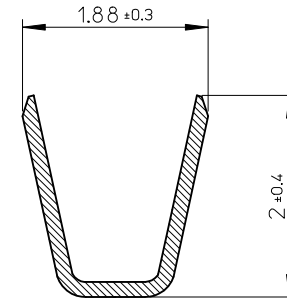


NOTES

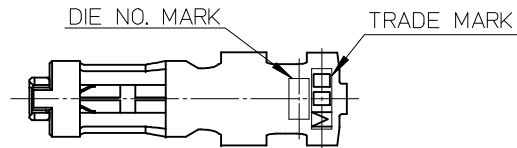
1. 使用材料: 銅合金、錫メッキ(t=0.15)
MATERIAL: COPPER ALLOY, PRE-TINNED (t=0.15)
2. 適合ハウジング: 505151シリーズ
APPLICABLE HOUSING: 505151 SERIES
3. ELV及RoHS適合
ELV AND ROHS COMPLIANT
4. アプリケーション仕様書(コネクタ取扱説明書): AS-505151-001/-002
APPLICATION SPECIFICATION (CONNECTOR MANUAL):
5. 製品仕様書: PS-505151-001
PRODUCT SPECIFICATION:
6. 圧着視覚教材(品質要領書): ATS-57427-0000
CRIMPING VISUAL AID:



SECTION X-X
SCALE 20:1



SECTION Y-Y
SCALE 20:1



5051538000	CHAIN
MATERIAL NO.	FORM

RELEASED EC NO: J2015-0035 DRWN: MIKEDA01 2014/06/30 CHKD: KASAKAWA 2014/07/11 APPR: NUKITA 2014/07/15	GENERAL TOLERANCES (UNLESS SPECIFIED)		DIMENSION STYLE MM ONLY		SCALE 10:1	DESIGN UNITS METRIC	THIRD ANGLE PROJECTION
	10 UNDER	± 0.2	DRAWN BY MIKEDA01	DATE 2014/03/03	TITLE 2.0MM PITCH W/B CONN. REC TERMINAL molex DOCUMENT NO. SD-505153-001 SHEET NO. 1 OF 1		
	10 OVER 30 UNDER	± 0.25	CHECKED BY KASAKAWA	DATE 2014/03/04			
	30 OVER	± 0.3	APPROVED BY NUKITA	DATE 2014/03/28			
DESCRIPTION	ANGULAR ± 3 °	DRAFT WHERE APPLICABLE MUST REMAIN WITHIN DIMENSIONS		MATERIAL NO. SEE CHART			

WIRE RANGE
AWG: #22, #24

INSULATION RANGE
Ø1.5 MAX.