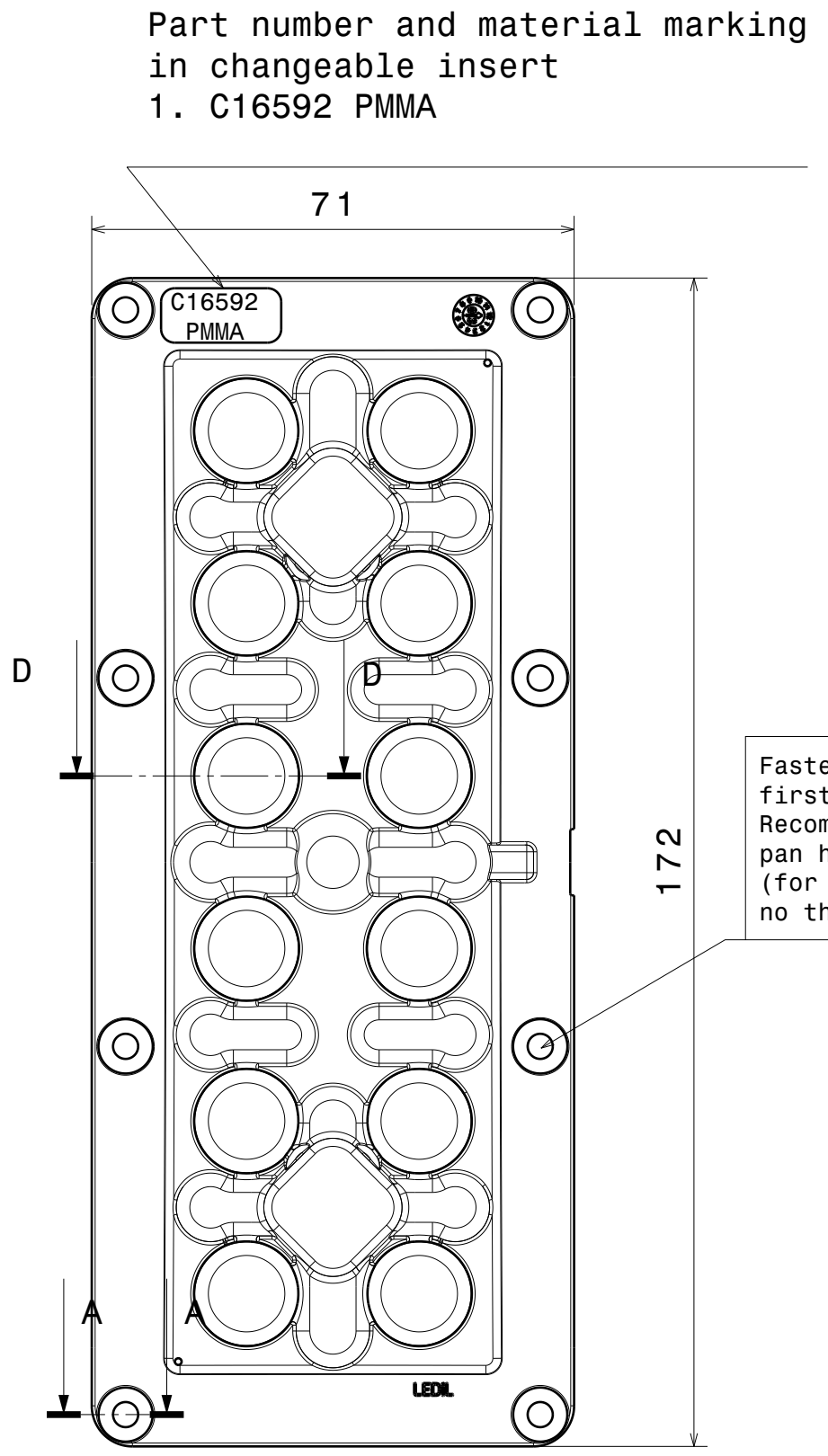
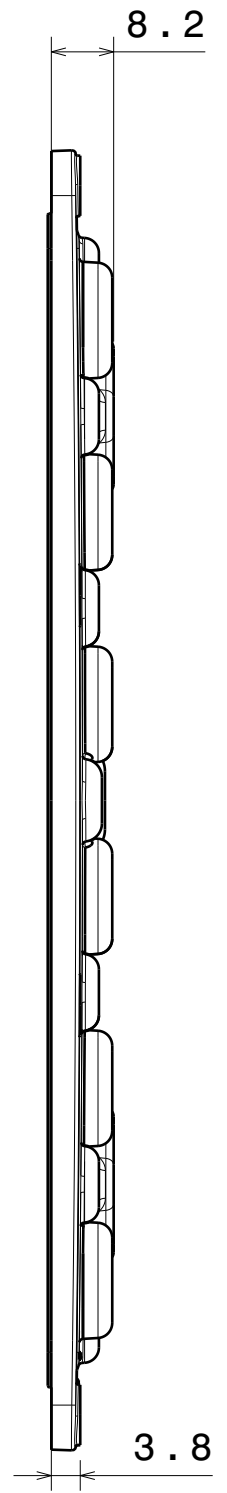


Isometric view  
Scale: 1:1

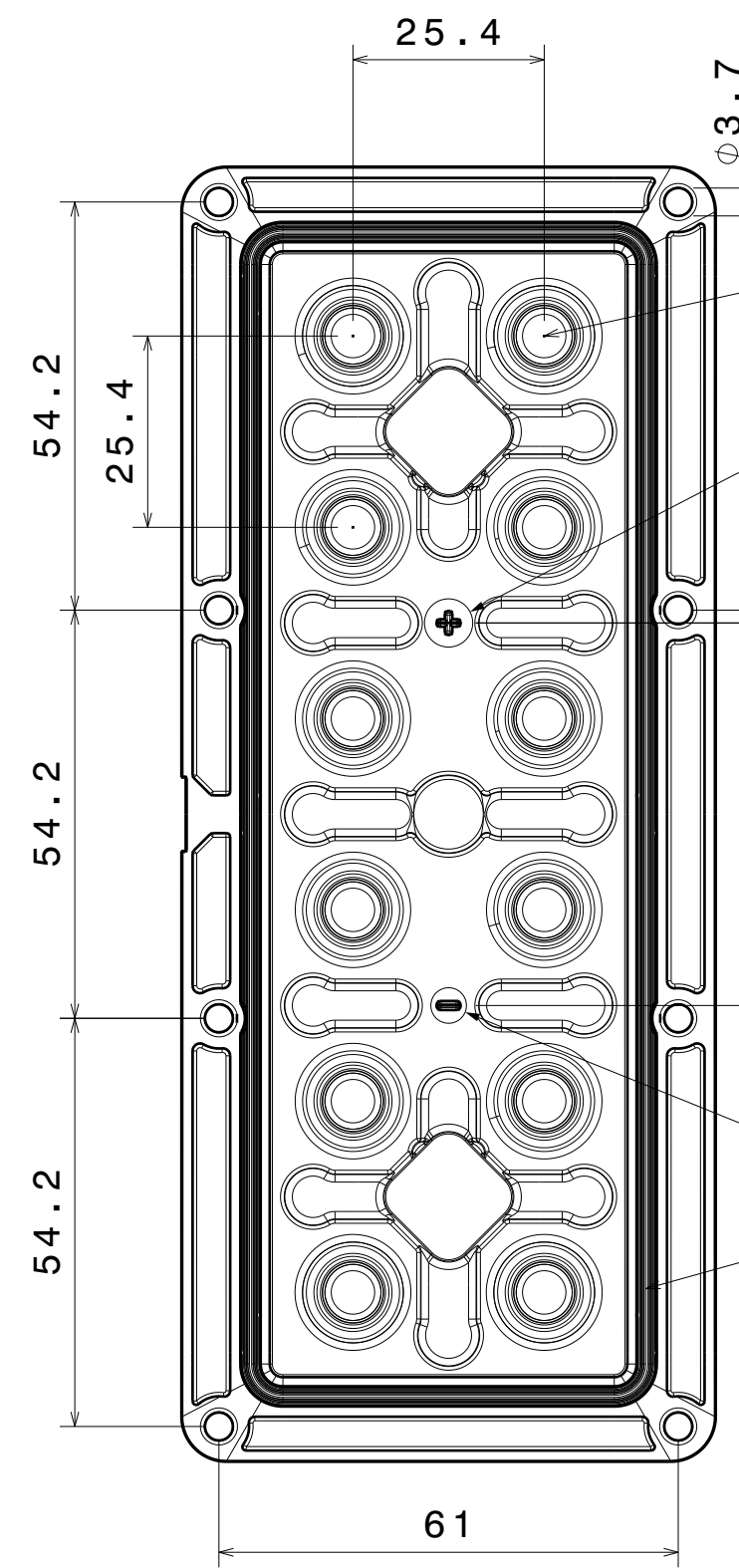


Part number and material marking  
in changeable insert  
1. C16592 PMMA

Fasten middle screws  
first.  
Recommended torque with  
pan head screw: 0.6Nm  
(for 1.6mm thick PCB,  
no thermal pad)

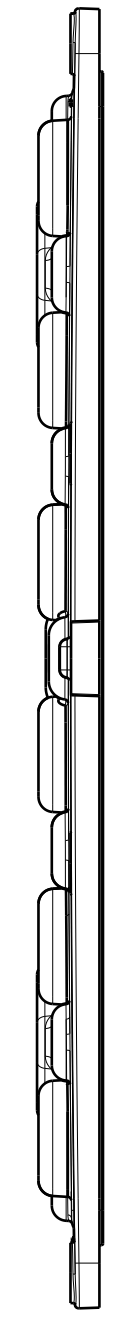


Left view  
Scale: 1:1



Wiring:  
PCB is fully sealed between  
the lens with silicone seal  
and the heatsink. Wiring  
needs to be done through the  
PCB and heat sink to  
maintain high IP rating.

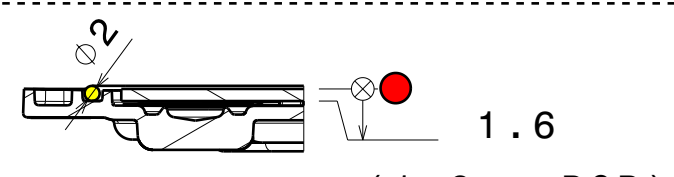
Rear view  
Scale: 1:1



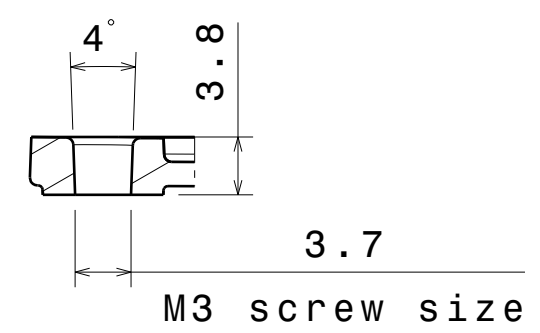
Right view  
Scale: 1:1

Front view  
Scale: 1:1

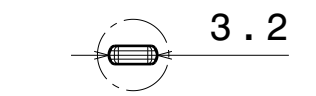
Silicone seal is tested to work in LEDiL test assemblies. Customer is recommended to test the sealing in the end product due many variables, such as heat sink surface and possible chemical traces



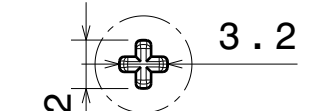
Section view D-D  
Scale: 1:1



Section view A-A  
Scale: 2:1



Detail C  
Scale: 2:1



Detail B  
Scale: 2:1

**Notes**

1	PCB or heatsink level.
2	LED location.
3	Ensure LED fitting from a product specific 3D model available from <a href="http://www.ledil.com">www.ledil.com</a> .
4	See installation details in page 2.

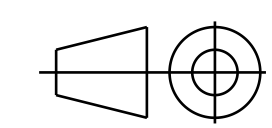
PART	TYPE	MATERIAL	COLOR / COATING
CS16593_HB-IP-2X6-G2-WWW	HB-IP-2X6-WWW	PMMA 8N, Silicone seal	

**MECHANICAL DRAWING**

PRODUCT  
**CS16593\_HB-IP-2X6-G2-WWW**

Tolerances if not otherwise shown  
According to DIN ISO 2768-1  
Linear measures: Up to 30mm  
class M, otherwise class C.  
According to DIN ISO 2768-2  
Form and position: class L

FIRST ANGLE PROJECTION:



**LEDiL**<sup>®</sup>

This drawing is the property of LEDiL Oy. It may not be reproduced, copied or communicated without a written agreement with LEDiL Oy.

SCALE	1:1	WEIGHT	35 g	A2	SHEET 1/1
-------	-----	--------	------	----	-----------