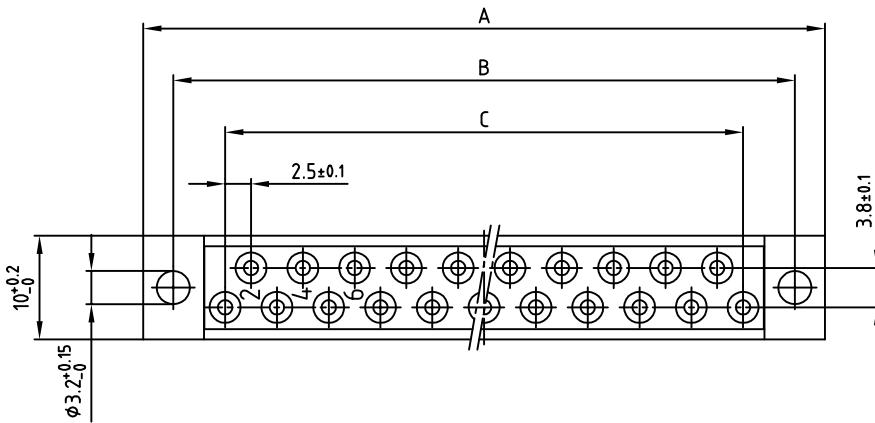
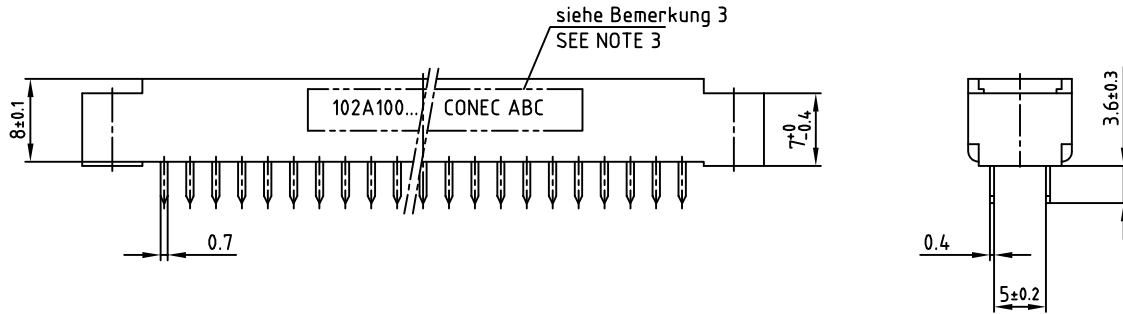
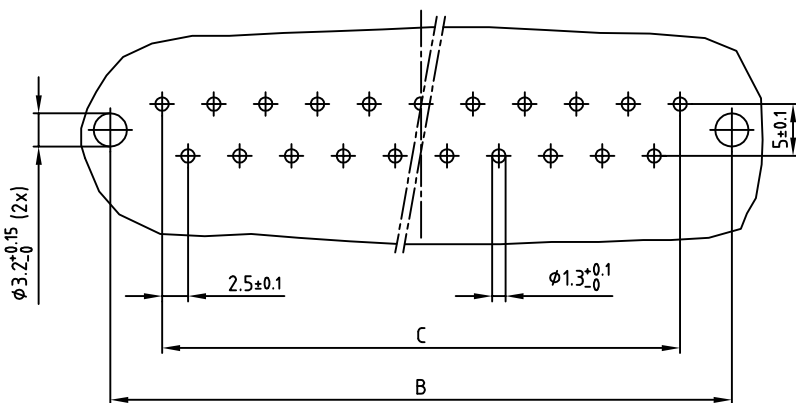


used for: DIN 41617

| Part-NO. | POS. | A -0.3 | B ± 0.1 | C ± 0.1 |
|------------|------|----------|-------------|-------------|
| 102A10059X | 13 | 45.8 | 40 | 12x2.5=30 |
| 102A10079X | 21 | 65.8 | 60 | 20x2.5=50 |
| 102A10099X | 31 | 90.8 | 85 | 30x2.5=75 |



Leiterplattenbohrbild
P.C.B.-HOLE DRILLINGS (b)



- Bemerkung: (b)
1. Isolierkörper: PC GF UL 94 V-1, grau (c)
 2. Kontakte: Cu-Legierung
Veredelung: min. Au über min. Ni
 3. Bedruckung: [Art.-Nr. CONEC ABC]

- NOTES:
1. INSULATOR: PC GF UL 94 V-1, GREY (c)
 2. CONTACTS: COPPER ALLOY
PLATING: GOLD FLASH over NICKEL
 3. CONNECTOR IS PART MARKED: [PART-NO. CONEC ABC]

Directive 2002/95/EC RoHS compliant

THIS DRAWING MAY NOT BE COPIED OR REPRODUCED IN ANY WAY, AND MAY NOT BE PASSED ON TO A THIRD PARTY, WITHOUT WRITTEN PERMISSION. OWNERSHIP AND COPYRIGHT OF CONEC GMBH DO NOT ALTER CAD DRAWING BY HAND

| rev. | description | date | name |
|-------|-------------|------------|------|
| 2 x c | Ä4154 | 09.11.2011 | K.H. |
| 2 x b | Ä3723 | 18.08.2010 | K.H. |
| a | Original | | |

| tolerance | | dim. in mm | |
|-----------|-----------|--------------|--|
| 2004 | date | name | |
| drawn | 09.03. | Lehmenkühler | |
| appd. | 09.03. | Mickenbecker | |
| norm | DIN 41617 | | |

| | | |
|-----------|--|-----------------------|
| scale: | 2:1 | |
| material: | SEE NOTES | |
| title: | FEMALE CONNECTOR 13-31pos. Version "D" with straight solder pins | |
| dwg no: | 10K1A008 | DIN-A 3 sh: 1/1 |
| part no: | SEE TABLE | |