

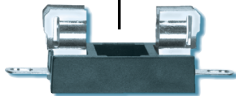
## 647 Series Molded Fuse Holder For 5×20mm Fuses



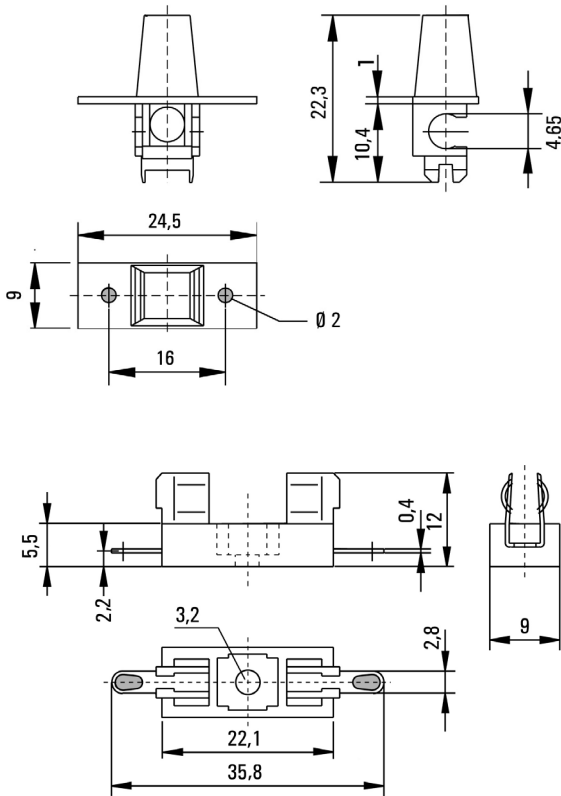
**640 Adapter  
(Optional Adapter)**



**647 Series Holder**



### Dimensions



### Product Characteristics

<b>Compatible Fuse Sizes</b>	5×20mm
<b>Materials</b>	<b>Holder:</b> Black Thermoplastic, UL94 V-0 Polyamide PA 6.6
	<b>Adapter:</b> Polyester PBT, UL94 V-0
	<b>Metal Parts:</b> Tin plated copper alloy
<b>Electrical Data (23°C)</b>	<b>Rated Voltage:</b> 250V
	<b>Max. Current/Power:</b> 6.3A/2.5W 6.3A/1.6W (with No. 640)
<b>Mounting</b>	$\varnothing$ 3mm screw hole Hand adapter can be optionally used with Holder No. 646 and 647
<b>Terminals</b>	Solderable or 2.8mm quick connect - fits 0.5mm tabs
<b>Minimum Cross Section</b>	Conducting path - 2.5mm <sup>2</sup>
<b>Unit Weight</b>	1.7g (Holder), 1.0g (Adapter)

### Ordering Information

Ordering PN	Description
647 0000 1001	647 5×20mm 250V Cable Type Fuse Block
640 0000 1003	Adapter - Black
640 0000 1403	Adapter - Brown
640 0000 1503	Adapter - White
640 0000 1603	Adapter - Yellow
640 0000 1703	Adapter - Green
640 0000 1903	Adapter - Blue
640 0000 1101	Adapter - Purple
640 0000 1201	Adapter - Orange
640 0000 1801	Adapter - Red

### Additional Information



Datasheet



Resources



Samples