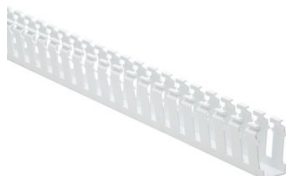


Specification Sheet

Part Number: 181-12007



Slotted-Wall Wiring Duct, 1" x 2", Non-Adhesive, PVC, White, 30 ft/carton

Article Number	181-12007
Type	SL1X2
Color	White (WH)
Features & Benefits	<ul style="list-style-type: none">• Strong fingers prevent unwanted breaking.• Fingers are easily deflected outward, allowing ready positioning of the wires within the slotted wall duct.• Restricted opening design in the finger of the duct helps keep wires in place.• Restricted opening prevents unintended removal of wires and permits any individual wire to be traced without disconnection.
Quantity Per	box

Product Description

Pro-Duct slotted wall wiring duct features break-away fingers which provide additional access for wire leads. Each section of the duct is provided with two score lines. The upper score line is used to break away fingers when a greater opening is required. The lower score line allows the sidewall to be smoothly cut for joints and Ts.

Short Description	Slotted-Wall Wiring Duct, 1" x 2", Non-Adhesive, PVC, White, 30 ft/carton
Global Part Name	SL1X2-PVC-WH
Technical Description	Non-Adhesive
Length L (Imperial)	6.0
Length L (Metric)	1.83
Width W (Imperial)	1.0
Width W (Metric)	25.4
Height H (Imperial)	2.07
Height H (Metric)	52.60
Mounting Hole Centers (Imperial)	4.0
Material	Polyvinylchloride (PVC)
Material Shortcut	PVC
Flammability	Self-Extinguishing
Halogen free	No
Operating Temperature (Metric)	+122°F (+50°C)

Reach Complaint(Article 33)

No

ROHS Complaint

Yes

Certification/Specification WEB

EN 50085-2-3_1A EN 50085-1:2005 + A1:2013 UL CSA

UL Recognized (US)

Yes

Package Quantity(Imperial)

30

Package Quantity (Metric)

9.14

Customs Number

3925900000