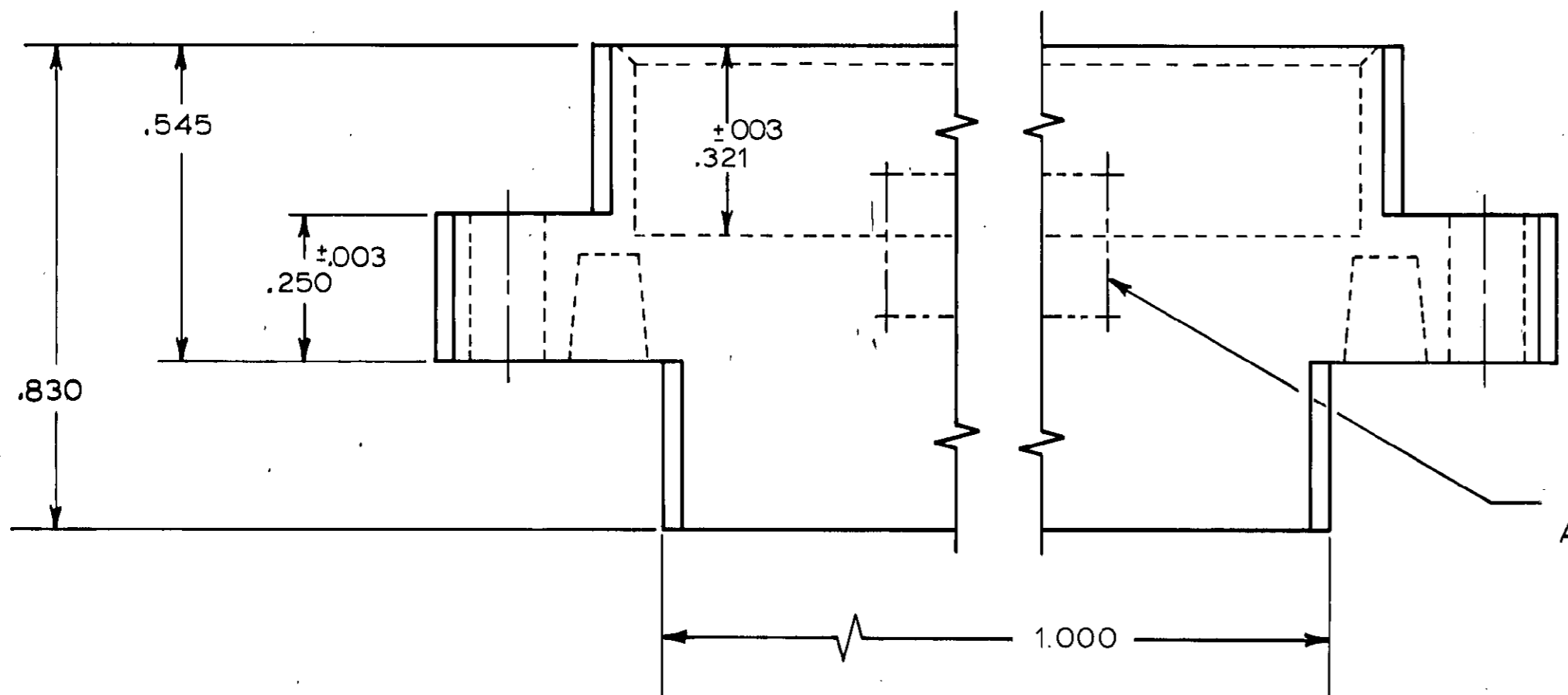
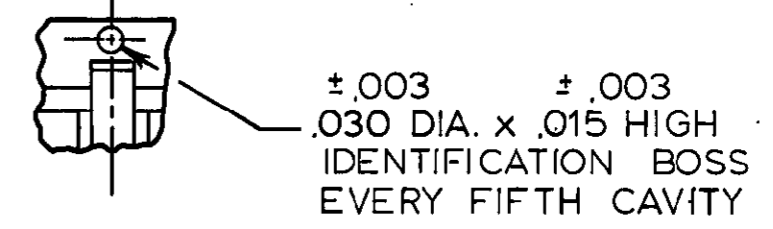
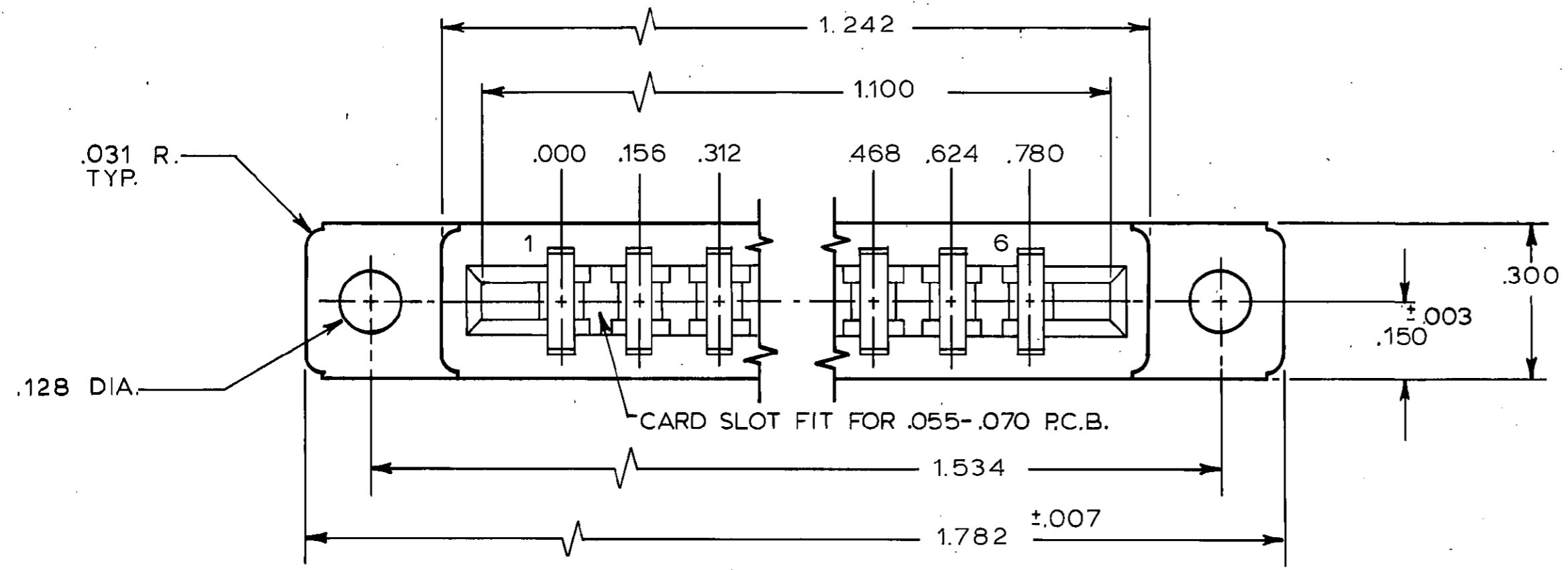
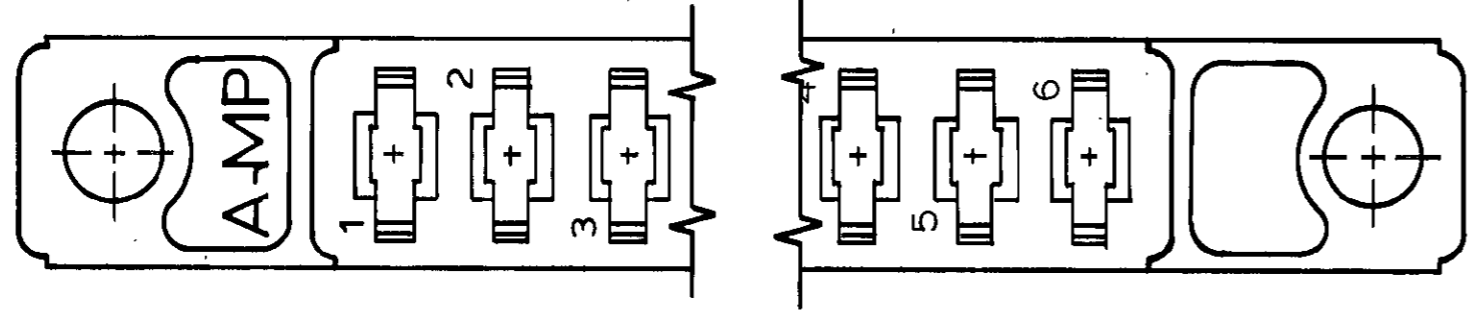


THIS DRAWING IS UNPUBLISHED. RELEASED FOR PUBLICATION NOVEMBER 8, 1967.  
 © COPYRIGHT 1967 BY AMP INCORPORATED, HARRISBURG, PA. ALL INTERNATIONAL RIGHTS RESERVED. AMP PRODUCTS MAY BE COVERED BY U.S. AND FOREIGN PATENTS AND/OR PATENTS PENDING.

REVISIONS						
P	F	ZONE	LTR	DESCRIPTION	DATE	APPROVED
			F1	REDWN/AD0314	SR 5/4/84	HWR
			G	REVISED PER 0010-1301-94	11/3/94	SC
			H	REV PER EC 0G3C-233-01	08OCT01	MM



MARKED "A-MP", PART NO., AND DATE CODE



1. USE ON CONTACT KEYING PLUG NO. 583283-1
2. USE CONTACT NO. 583259
3. GLASS FILLED NYLON, COLOR: BLACK, OR GLASS FILLED POLYESTER, COLOR: BLACK.

583297-1		AS SHOWN	
CODE IDENT	DWG. SIZE	PART NO OR IDENTIFYING NO	NOMENCLATURE OR DESCRIPTION
REVISION OF EACH ASSY NO (WHEN BLANK, USE DWG REVISION)			
QTY REQD PER ASSY		PARTS LIST	
UNLESS OTHERWISE SPECIFIED DIMENSIONS ARE IN INCHES. TOLERANCES ON: DECIMALS ±.005 ANGLES ±		<b>AMP</b>   AMP INCORPORATED Harrisburg, Pa. 17105 NAME: <b>HOUSING, MODIFIED FORK 6 POS., .156 CENTERS.</b>	
MATERIAL	CONTRACT NO	DR	CHK
FINISH	DRSN APPD	APPD	APPD
	OTHER APPD	SIZE	FSCM NO
		DRAWING NO	
		SCALE 4:1	SHEET 1 OF 1