

8		7		6		5		4		3		2		1	
THIS DRAWING IS UNPUBLISHED. RELEASED FOR PUBLICATION 2007															
COPYRIGHT 2007 BY TYCO ELECTRONICS CORPORATION. ALL RIGHTS RESERVED.															
PART NUMBER	REV	FIRST USED	POWER UNIT	FEED TYPE											
567408-2	G	-	BENCH MODEL G	AIR FEED											

- △ RECOMMENDED SPARE PARTS.
- △ GREASE LIGHTLY.
- △ LUBRICATE DAILY USING NO. 20 MACHINE OIL.
- △ AFTER ASSEMBLY OF APPLICATOR, PROPER SPRING PRESSURE (ITEM 34) CAN BE OBTAINED BY TIGHTENING SET SCREW (ITEM 105) UNTIL CONTACT IS MADE WITH SPACER (ITEM 32) THEN TIGHTEN AN ADDITIONAL 5 1/2 - 6 REVOLUTIONS.
- △ GUARD MUST BE IN PLACE WHEN OPERATING APPLICATOR IN A BENCH MACHINE.

TERMINAL NAME: .250 SERIES FLAG POS LOK-EX RECEPTACLE					
-	175057	AMP TERMINAL - AMP CRIMP SPECS			
-	-	PAD LTR	CRIMP HEIGHT	WIRE SIZE	Ø SOLDER
-	-	A	.069±.002	12	-
-	-	B	.059±.002	14	-
-	-	C	.053±.002	16	-
-	-	D	.049±.002	18	-
-	-	CRIMP	SIZE	TYPE	RANGE
-	-	WIRE	.160	TAB LOC	18-12
-	-	INSUL	.180	O	.110-.209
WIRE STRIP LENGTH	TERM APPL SPEC	FEED	APPL INSTRUCTIONS	SET UP GAGE	LAYOUT
.197-.236	114-5122	.144	409-9037		L1815

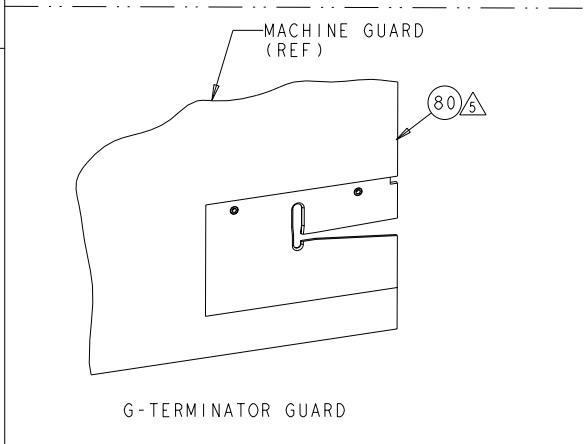
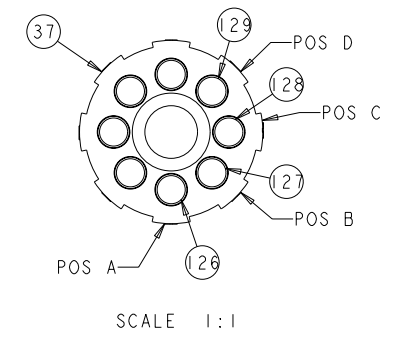
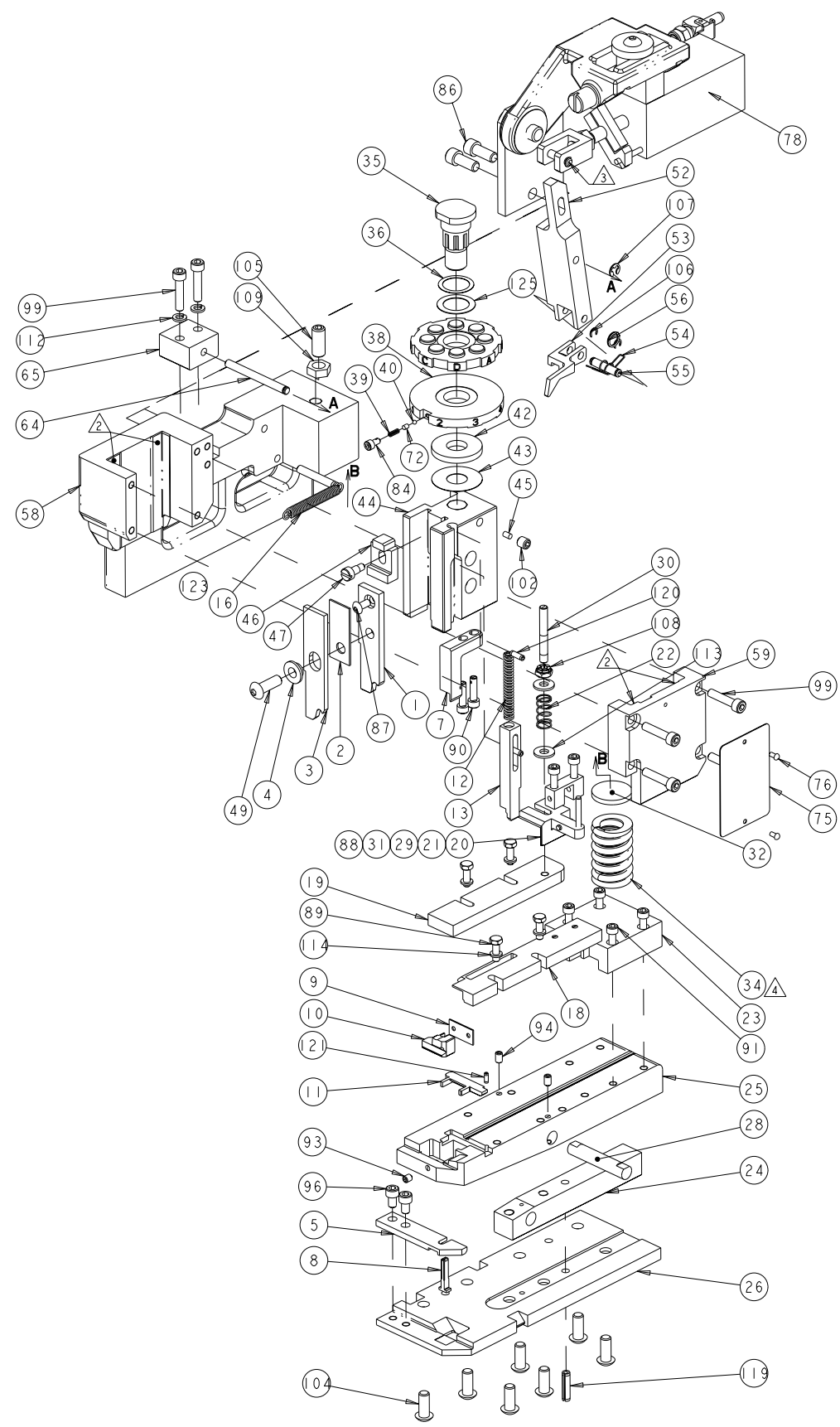
LOC	DIST	REVISIONS			
A	66	F	LYN	DATE	BY
		F	ECR-07-006533	27MAR2007	BW TE
		G	ECR-09-004568	24FEB2009	BW TE

2	-	3-354779-4	PIN, WIRE DISC (MARKED)	129
2	-	2-354779-6	PIN, WIRE DISC (MARKED)	128
2	-	1-354779-4	PIN, WIRE DISC (MARKED)	127
2	-	9-354778-5	PIN, WIRE DISC (MARKED)	126
1	-	986950-1	WASHER, FLAT PRECISION	125
1	-	3-22183-9	PIN, GROOVED, TYPE 67	123
1	-	3-21028-2	PIN, SLOTTED SPRING .094 X .250	121
2	-	4-21028-9	PIN, SLOTTED SPRING .125 X .375	120
1	-	21029-5	PIN, SLOTTED SPRING .188 X .750	119
4	-	21024-4	WASHER, SPRG LOCK, REG NO 8	114
2	-	21899-2	WASHER, FLAT	113
2	-	21024-5	WASHER, SPRG LOCK, REG NO 10	112
1	-	1-22202-7	NUT, HEX, JAM 5/16-24/UNF	109
1	-	21022-3	NUT, HEX, SELF-LOCKING, THIN, 10-32	108
1	-	1-21986-2	RING, RETAIN, EXTERN, 3/16 E-RING	107
2	-	21045-3	RING, RETAIN, EXTERN, 3/16 CRESCENT	106
1	-	8-21007-5	SCR, SET, CUP POINT 5/16-24 X .750	105
7	-	2-22733-8	SCR, BHSC, SELF-LOCKING, 1/4-20 X .625	104
1	-	21009-2	SCR, SET, SELF LOCKING 1/4-20 X .250	102
6	-	3-21000-8	SCR, SKT HD CAP 10-32 X .875	99
2	-	7-21000-6	SCR, SKT HD CAP 10-32 X .312	96
2	-	4-21006-0	SCR, SET, CUP POINT 8-32 X .250	94
1	-	21061-9	SCR, SET, CONE POINT 8-32 X .250	93
4	-	2-21000-9	SCR, SKT HD CAP 8-32 X .750	91
2	-	1-23030-1	SCR, SKT HD CAP, S-LOCK, 8-32 X .625	90
4	-	2-22603-3	SCR, HEX HD CAP, IN	89
2	-	2-21000-8	SCR, SKT HD CAP 8-32 X .625	88

1	-	2-21002-1	SCR, BTN SKT HD CAP 8-32 X .375	87
2	-	21001-3	SCR, SKT HD CAP 1/4-20 X .625	86
1	-	23030-1	SCR, SKT HD CAP, S-LOCK, 6-32 X .25	84
REF	..	679532-1	INSERT, GUARD	80
1	-	462622-2	AIR FEED ASSEMBLY	78
2	-	21017-2	SCREW, DRIVE	76
1	-	461264-1	PLATE, IDENTIFICATION	75
1	-	690603-1	SPRING ASSIST AMP-O-MATOR APPLICATOR	72
1	-	456987-1	BLOCK, PIVOT	65
1	-	457058-1	PIN, PIVOT	64
1	-	318528-2	CAP, RAM	59
1	-	457079-1	HOUSING, MACHINING	58
1	-	25745-1	RING, SPLIT	56
1	-	240624-1	PIN, FEED FINGER	55
1	-	691499-1	SPRING-FEED FINGER	54
1	-	454568-3	FINGER, FEED	53
1	-	457057-1	PIVOT ARM	52
1	-	3-21002-5	SCR, BTN SKT HD CAP 1/4-20 X .750	49
1	-	22353-8	SCR, SHLD, SLOT HD, 3/16 DIA	47
1	-	690578-1	INSULATION ADJUST BLOCK	46
1	-	690191-1	PLUG, NYLON	45
1	-	454574-1	RAM	44
1	-	690125-1	SHIM SUB-ASSY	43
1	-	1-690124-1	WASHER, RAM (.150)	42
1	-	23241-6	BALL, STEEL	40
1	-	690170-1	SPRING, COMPRESSION	39
1	-	690142-1	DISC, INSULATION	38
1	-	354777-1	WIRE DISC, ASSEMBLY	37
1	-	22480-5	WASHER, WAVE SPRING	36
1	-	690212-1	POST, RAM	35
1	-	3-23846-5	SPRING, DIE	34
1	-	690573-1	SPACER, SPRING	32
1	-	454569-2	MOUNT, DRAG	31
1	-	1-22354-8	STUD, THREADED	30
1	-	21030-2	PIN, DOWEL .1250 X .500	29
1	-	690582-1	PIN, HINGE	28
1	-	684905-1	PLATE, BASE	26
1	-	454579-5	BAR, HINGE	25
1	-	690571-1	STABILIZER	24
1	-	690585-2	BLOCK, SPRING PRESSURE	23
1	-	22282-5	SPRING, COMPRESSION	22
1	-	21030-6	PIN, DOWEL .1250 X 1.000	21
1	-	454570-1	DRAG, STOCK	20
1	-	454573-1	GUIDE, STRIP, REAR	19
1	-	318739-7	GUIDE, FRONT STRIP	18
1	-	2-22287-6	SPRING, EXTENSION	16
1	-	1-692134-8	TERMINAL POSITIONER	13
1	-	5-22280-5	SPRING, COMPRESSION	12
1	-	454712-7	PLATE, REAR SHEAR	11
1	-	454709-1	ANVIL, INSERT	10
1	-	690569-1	PLATE, SHEAR, FRONT	9
1	-	691523-3	ANVIL	8
1	-	454575-9	BLADE, SHEAR	7
1	-	684906-1	ANVIL RETAINING	5
1	-	690574-1	SPACER, TUBULAR	4
1	-	690588-1	CRIMPER, INSULATION PREMIUM	3
1	-	681153-1	SPACER, CRIMPER	2
1	-	690587-1	CRIMPER, WIRE	1

DIMENSIONS:		TOLERANCES UNLESS OTHERWISE SPECIFIED:		DRAWN BY: G. WEAVER 07FEB2007		CHECKED BY: T. ELBIN 07FEB2007		APPROVED BY: T. ELBIN 07FEB2007		NAME: Tyco Electronics Harrisburg, PA 17105-3608	
IN		0 PLC ±.010		1 PLC ±.015		2 PLC ±.020		3 PLC ±.030		4 PLC ±.040	
MATERIAL:		FINISH:		APPLICATION SPEC:		WEIGHT:		SCALE: 1:1		SHEET 1 OF 2	
CUSTOMER DRAWING		SCALE: 1:1		SHEET 1 OF 2		REV G		PART NO		DESCRIPTION	
A 00779		C=567408-2		APPLICATOR, HINGE BAR, .250 FLAG POS LOK-EX RECEPTACLE		ITEM NO					

LOC		DIST		REVISIONS				
A	66	F	LYN	DESCRIPTION	DATE	DWN	APFD	
		-	-	SEE SHEET 1	-	-	-	



DIMENSIONS:		TOLERANCES UNLESS OTHERWISE SPECIFIED:		DWN G. WEAVER 07FEB2007		TycO Electronics	
IN		0 PLC ±.0005		CHK T. ELBIN 07FEB2007		Harrisburg, PA 17105-3608	
Ø		1 PLC ±.0010		APFD T. ELBIN 07FEB2007		NAME	
H		2 PLC ±.0015		APPLICATION SPEC		APPLICATOR, HINGE BAR,	
L		3 PLC ±.0020		WEIGHT		.250 FLAG POS LOK-EX RECEPTACLE	
R		4 PLC ±.0025		CUSTOMER DRAWING		SIZE CAGE CODE DRAWING NO	
S		ANGLES ±.0005		SCALE 3:5		A 00779 C=567408-2	
T		FINISH		SHEET 2 OF 2		RESTRICTED TO	
U				REV G			

CUSTOMER VIEWABLE ASSEMBLY