

**MATERIAL (INSULATOR / CONTACT)**  
(SEE MATERIAL TABLE)

**PLATING**

ALL PLATINGS HAVE .000050" MIN NICKEL UNDERPLATE CONTACT SURFACE TERMINATION

B = .000010" GOLD .000100" PURE TIN, MATTE  
 C = .000030" GOLD .000100" PURE TIN, MATTE  
 G = .000010" GOLD .000005" GOLD  
 E = .000100" PURE TIN, MATTE OVERALL  
 S = .000010" GOLD OVERALL  
 M = .000030" GOLD .000010" GOLD OVERALL

**MATERIAL TABLE**

LETTER CODE	INSULATOR / CONTACT	OPERATING TEMP.	PROCESSING TEMP.	MODIFICATION NUMBER
P	BLACK PBT / PHOSPHOR BRONZE	-65°C TO +125°C	WAVE/MANUAL SOLDERING	OMIT
G	BLACK PA9T / PHOSPHOR BRONZE	-65°C TO +150°C	260°C MAX FOR 10 SECS	OMIT
L	WHITE PA9T / PHOSPHOR BRONZE	-65°C TO +150°C	260°C MAX FOR 10 SECS	OMIT
*A	GREEN PPS / BERYLLIUM COPPER	-65°C TO +200°C	260°C MAX FOR 20 SECS	OMIT
*A	BROWN PPS / BERYLLIUM COPPER	-65°C TO +200°C	260°C MAX FOR 20 SECS	M500
*Y	TAN PEEK / BERYLLIUM COPPER	-65°C TO +250°C	260°C MAX FOR 20 SECS	OMIT

\* AVAILABLE WITH OVERALL GOLD PLATING ('M') ONLY

**PART NUMBER CODING**

C S N - M

**MODIFICATION**

OMIT = STANDARD, EXAMPLE: 'AMC22SBAN'  
 M500 = BROWN PPS  
 (MATERIAL CODE 'A' ONLY)

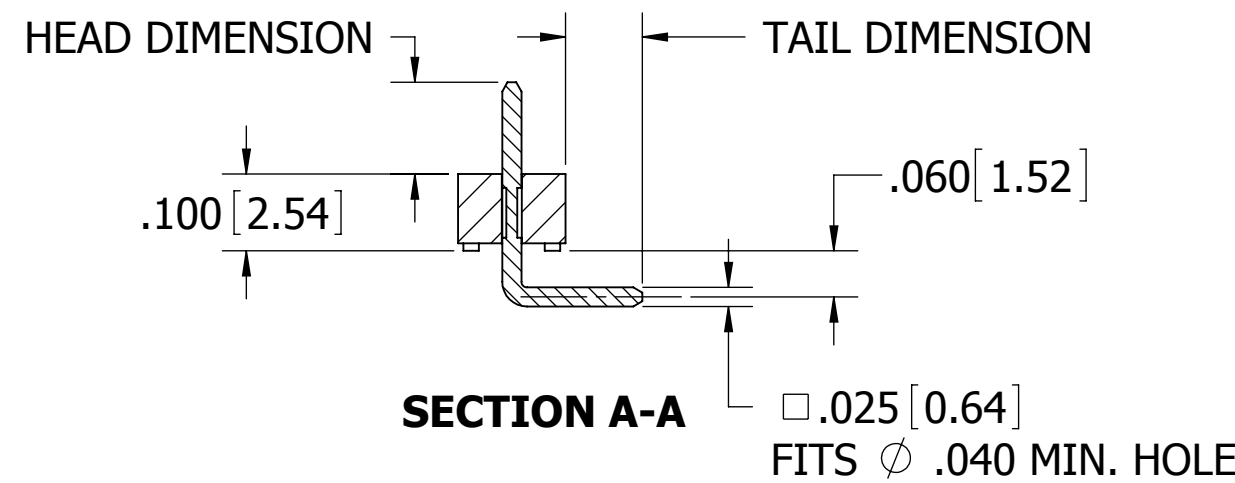
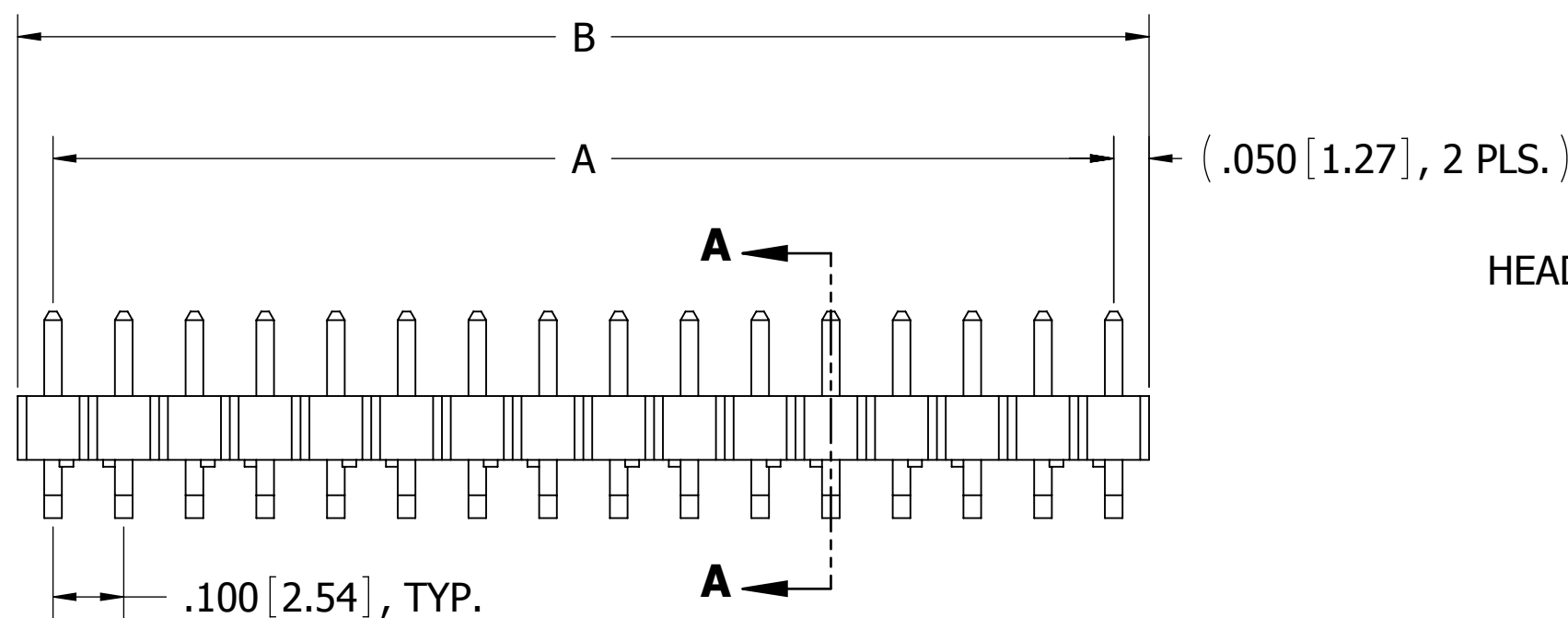
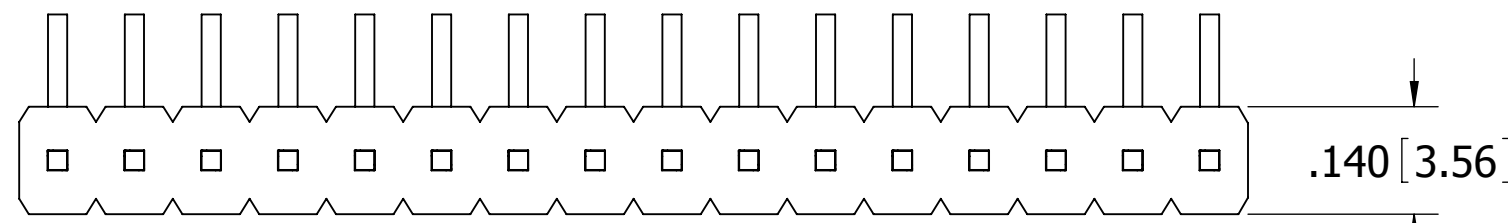
**TERMINATION TYPE**

**NUMBER OF POSITIONS PER ROW**  
(01 THRU 36)

REVISIONS				
REV.	ECO. NO	DESCRIPTION	DATE	BY
B	2078	UPDATE TEMPERATURE TO 150°C FOR 'G' MTL, CORRECT NOTE 6 & 7, ADD NEW TERMINATION TYPES BH, BI, BJ, GE, GF, COMBINED 'P' MTL IN P/N CODING (DWG 10907 OBSOLETE)	11/12/2009	JH
C	2442	UPDATE PROCESSING TIME FOR 'G' MTL, VOLTAGE RATING, REMOVE OPERATING TEMP FOR 'P' MTL & MOISTURE NOTE	9/9/2011	JH
D	2935	ADD HIGH TEMP MATERIALS	4/16/2014	JHSU
E	3165	UPDATE BOM FOR P MATERIAL CODE ON PRODUCTION DWG	2/27/2015	MG

TERMINATION TYPE RIGHT ANGLE BEND		
CODE	HEAD DIMENSION ±.008[0.20]	TAIL DIMENSION ±.025[0.64]
BA	.230[5.84]	.100[2.54]
BB	.230[5.84]	.200[5.08]
BC	.230[5.84]	.300[7.62]
BD	.230[5.84]	.400[10.16]
BE	.230[5.84]	.500[12.70]
BF	.230[5.84]	.600[15.24]
BG	.230[5.84]	.700[17.78]
BH	.230[5.84]	.800[20.32]
BI	.230[5.84]	.900[22.86]
BJ	.230[5.84]	1.000[25.40]
GA	.318[8.08]	.100[2.54]
GB	.318[8.08]	.200[5.08]
GC	.318[8.08]	.300[7.62]
GD	.318[8.08]	.400[10.16]
GE	.318[8.08]	.600[15.24]
GF	.318[8.08]	.800[20.32]
DA	.120[3.05]	.120[3.05]

PART NUMBER	A		B	
	INCH ±.008	MM ±0.20	INCH A.020	MM A0.51
_C01S_ _N	N/A	N/A	.100	2.54
_C02S_ _N	.100	2.54	.200	5.08
_C03S_ _N	.200	5.08	.300	7.62
_C04S_ _N	.300	7.62	.400	10.16
_C05S_ _N	.400	10.16	.500	12.70
_C06S_ _N	.500	12.70	.600	15.24
_C07S_ _N	.600	15.24	.700	17.78
_C08S_ _N	.700	17.78	.800	20.32
_C09S_ _N	.800	20.32	.900	22.86
_C10S_ _N	.900	22.86	1.000	25.40
_C11S_ _N	1.000	25.40	1.100	27.94
_C12S_ _N	1.100	27.94	1.200	30.48
_C13S_ _N	1.200	30.48	1.300	33.02
_C14S_ _N	1.300	33.02	1.400	35.56
_C15S_ _N	1.400	35.56	1.500	38.10
_C16S_ _N	1.500	38.10	1.600	40.64
_C17S_ _N	1.600	40.64	1.700	43.18
_C18S_ _N	1.700	43.18	1.800	45.72
_C19S_ _N	1.800	45.72	1.900	48.26
_C20S_ _N	1.900	48.26	2.000	50.80
_C21S_ _N	2.000	50.80	2.100	53.34
_C22S_ _N	2.100	53.34	2.200	55.88
_C23S_ _N	2.200	55.88	2.300	58.42
_C24S_ _N	2.300	58.42	2.400	60.96
_C25S_ _N	2.400	60.96	2.500	63.50
_C26S_ _N	2.500	63.50	2.600	66.04
_C27S_ _N	2.600	66.04	2.700	68.58
_C28S_ _N	2.700	68.58	2.800	71.12
_C29S_ _N	2.800	71.12	2.900	73.66
_C30S_ _N	2.900	73.66	3.000	76.20
_C31S_ _N	3.000	76.20	3.100	78.74
_C32S_ _N	3.100	78.74	3.200	81.28
_C33S_ _N	3.200	81.28	3.300	83.82
_C34S_ _N	3.300	83.82	3.400	86.36
_C35S_ _N	3.400	86.36	3.500	88.90
_C36S_ _N	3.500	88.90	3.600	91.44



**RIGHT ANGLE BEND**  
 C S N - M500

**NOTES:**

1. INSULATOR MATERIAL: SEE PART NUMBER CODING
2. CONTACT MATERIAL: SEE PART NUMBER CODING
3. PLATING: SEE PART NUMBER CODING
4. OPERATING TEMPERATURE: SEE MATERIAL TABLE
5. PROCESSING TEMPERATURE: SEE MATERIAL TABLE
6. UL FLAMMABILITY: 94V-0
7. DIELECTRIC WITHSTANDING VOLTAGE: 1800 VAC
8. CURRENT RATING: 3 AMPS
9. CONTACT RESISTANCE : 30 MILLIOHMS MAX
10. INSULATION RESISTANCE: 5000 MEGA OHMS MIN
11. MODIFICATION: SEE PART NUMBER CODING

**CUSTOMER COPY**



UNLESS OTHERWISE SPECIFIED:  
 DIMENSIONS ARE IN INCHES [MM]

TOLERANCES:  
 ANGULAR: ± 1°  
 DECIMALS  
 .XX = ± .02 [.5]  
 .XXX = ± .005 [.13]  
 .XXXX = ± .0005 [.013]

DRAWN	DATE	NAME
	9/9/2011	JH
THE INFORMATION HEREIN CONTAINS PROPRIETARY INFORMATION OF SULLINS ELECTRONICS AND IS NOT TO BE REPRODUCED, USED OR DISCLOSED TO OTHERS FOR ANY PURPOSE EXCEPT AS SPECIFICALLY AUTHORIZED IN WRITING BY AN OFFICER OF SULLINS ELECTRONICS.		

TITLE HEADER, .100 CC, RA			
PART NUMBER _C_ _S_ _N - (M500)			
SIZE C	CAGE CODE 54453	DWG. NO. C10909	REV E
SCALE: 4:1		SHEET 1 OF 1	