

# I.167 p | Tapered handles

with protection, Duroplast

METRIC

RoHS

PF

PA

+230 °F  
-4 °F

## MATERIAL

Phenolic based (PF) Duroplast body, polyamide based (PA) technopolymer flange, black colour, glossy finish.

## STANDARD EXECUTION

Zinc-plated steel threaded stud, chamfered flat end according to UNI 947 : ISO 4753 (see Technical data on page A-10).



# I.126 | Shaped handles

Duroplast

METRIC

RoHS

PF

+230 °F  
-4 °F

## MATERIAL

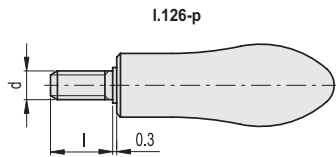
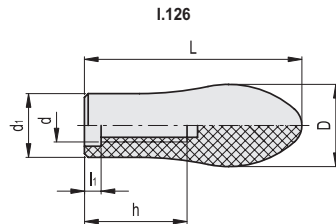
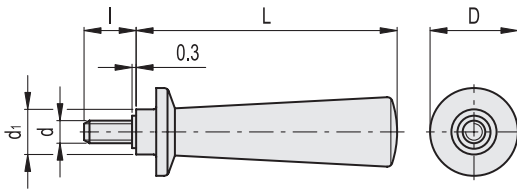
Phenolic based (PF) Duroplast, black colour, glossy finish.

## STANDARD EXECUTIONS

- **I.126:** threaded blind hole.
- **I.126-p:** zinc-plated steel threaded stud, chamfered flat end UNI 947 : ISO 4753 (see Technical data on page A-10).



Conversion Table	
1 mm = 0,039 inch	
L	
mm	inch
65	2.56
75	2.95
80	3.15
90	3.54
95	3.74
104	4.09
110	4.33



		METRIC					
Code	Description	D	L	d6g	d1	l	⚖
20306	I.167/103 p-M8x16	35	104	M8	18	16	90
20311	I.167/103 p-M8x25	35	104	M8	18	25	94

		METRIC						
Code	Description	D	L	d	d1	h	l1	⚖
18201	I.126/75-M8	28	75	M8	22	30	7.5	40
18202	I.126/75-M10	28	75	M10	22	40	7.5	38
18401	I.126/95-M12	33	95	M12	25	58	8	67
18501	I.126/110-M14	37	110	M14	28	70	4	109

		METRIC					
Code	Description	D	L	d6g	d1	l	⚖
18211	I.126/75 p-M8x25	28	75	M8	22	25	63
18411	I.126/95 p-M10x30	33	95	M10	25	30	107
18511	I.126/110 p-M12x30	37	110	M12	28	30	158

- 1
- 2
- 3
- 4
- 5
- 6
- 7
- 8
- 9
- 10
- 11
- 12
- 13
- 14
- 15
- 16
- 17
- 18

Fixed & Revolving handles