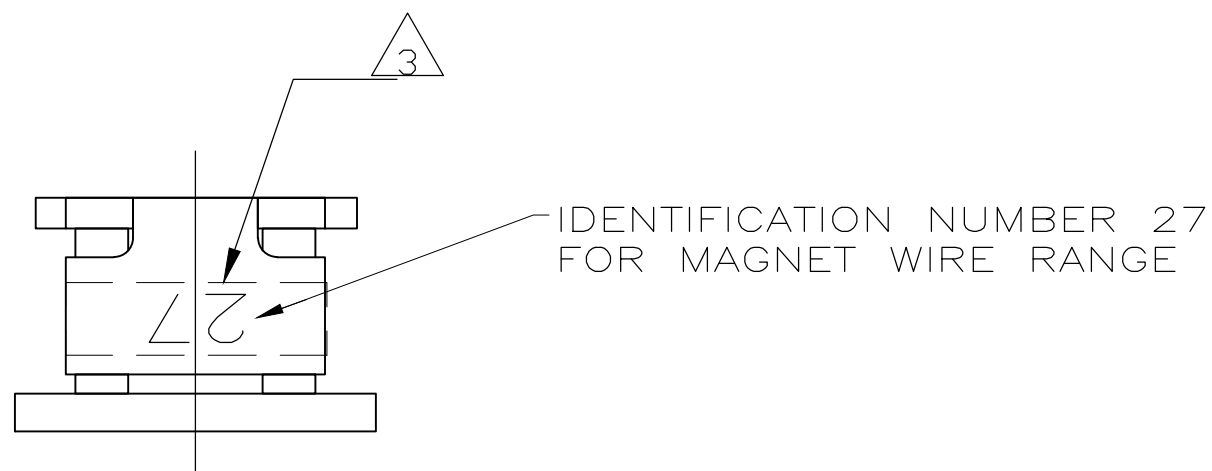
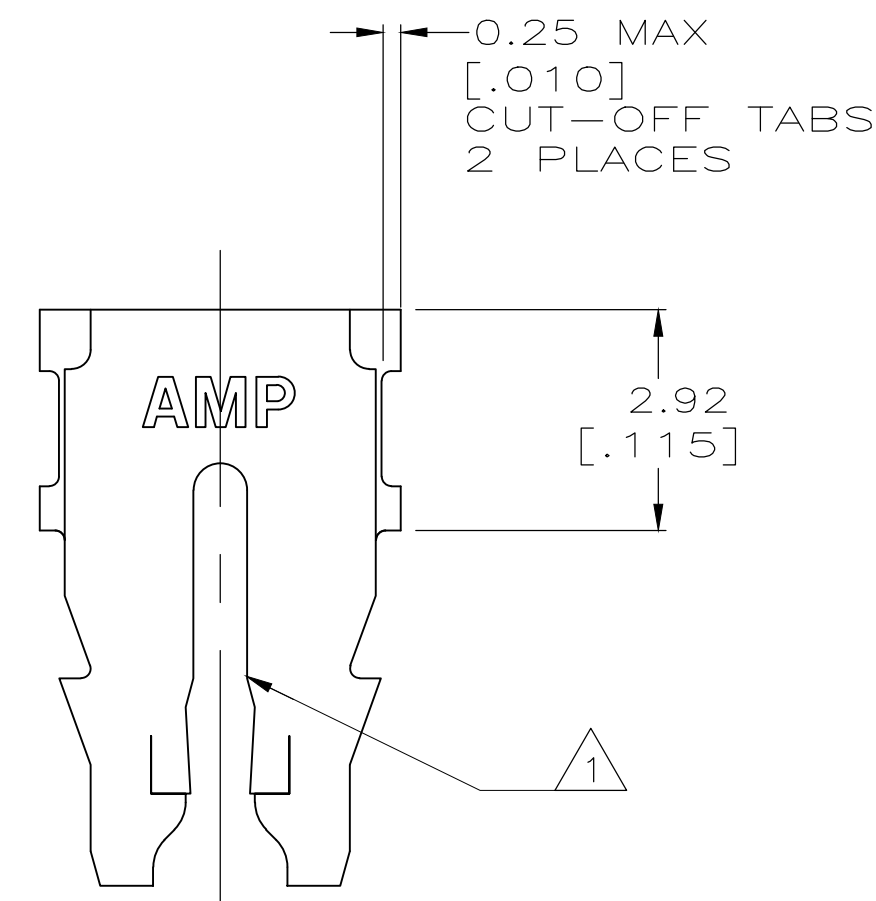
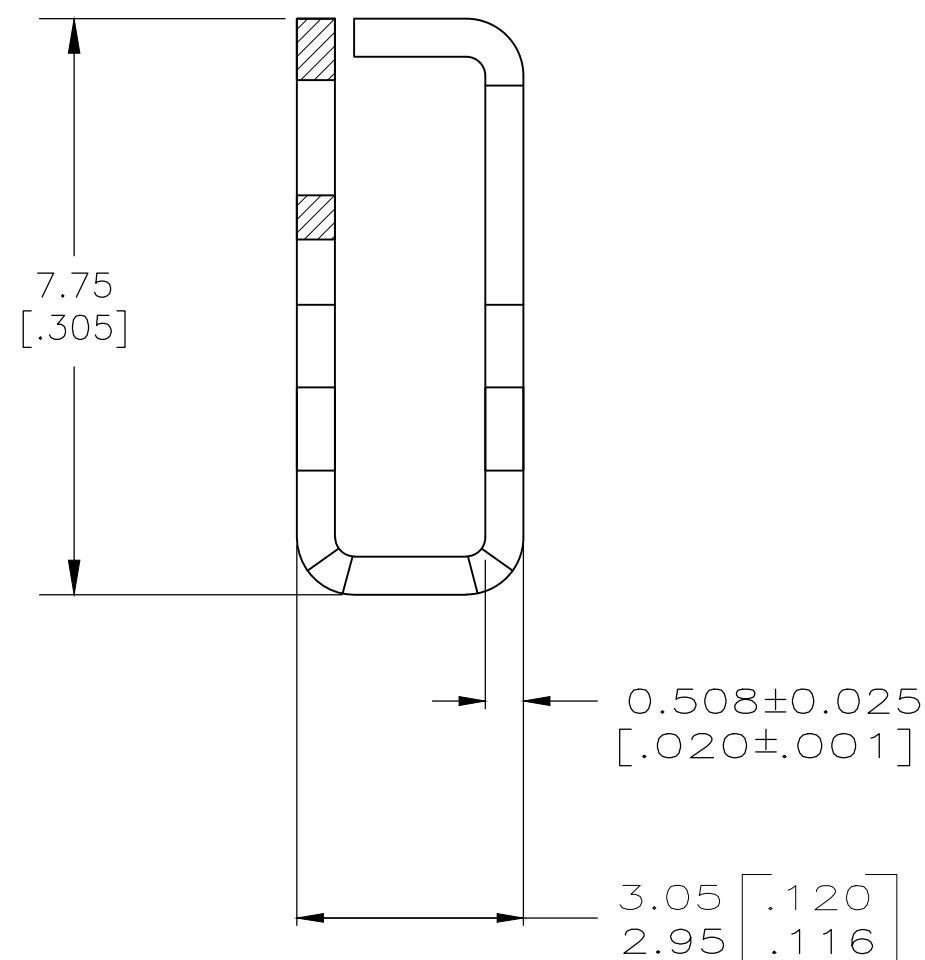
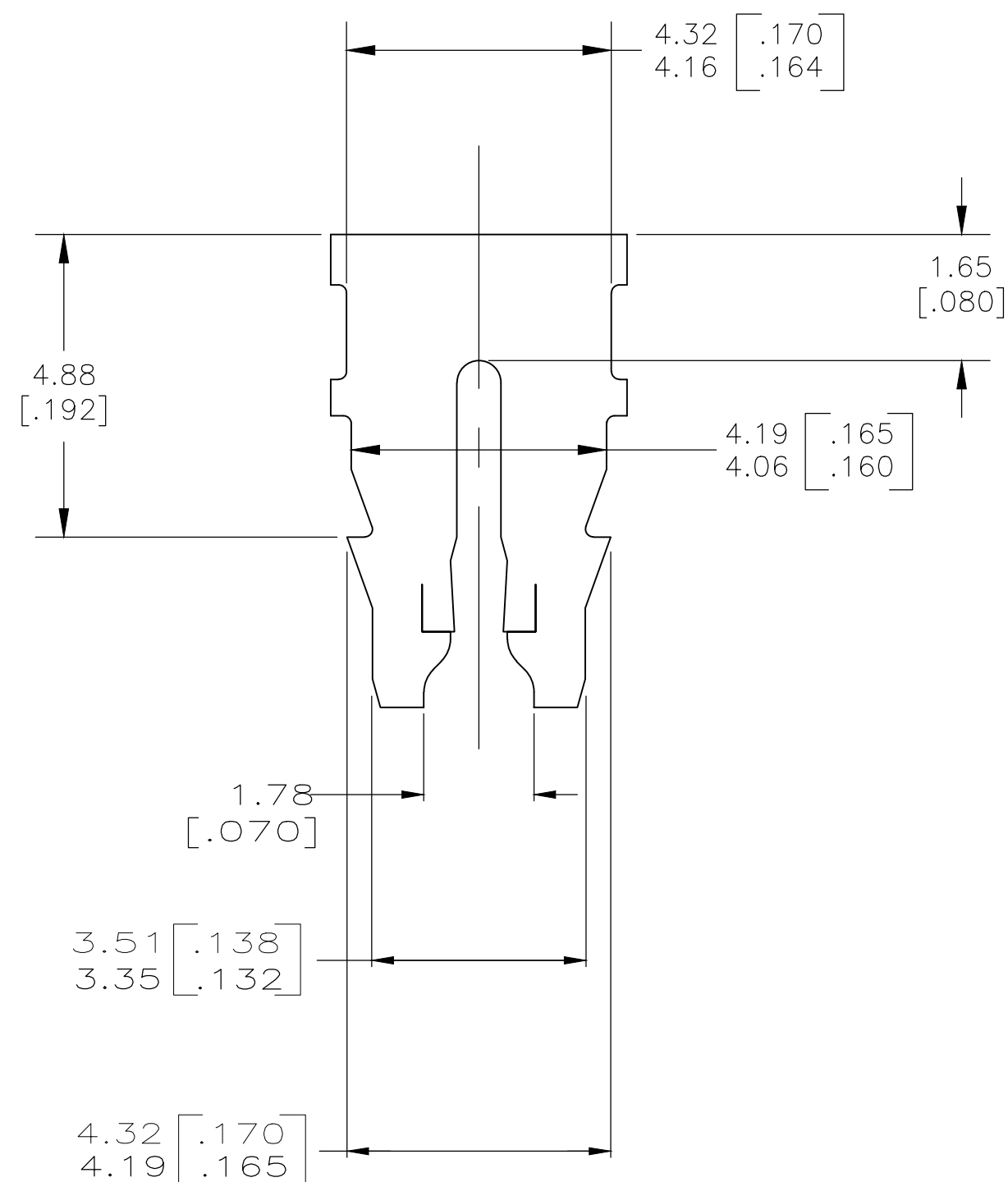


THIS DRAWING IS UNPUBLISHED. RELEASED FOR PUBLICATION
 © COPYRIGHT - TE Connectivity Ltd. ALL RIGHTS RESERVED.

REVISIONS				
P	LTR	DESCRIPTION	DATE	APVD
B1		DRAWING CLARIFICATION ON WIRE RANGE	08FEB2018	SV PKS



- 1 SLOT TERMINATES EITHER A SINGLE OR DOUBLE MAGNET WIRE OF THE SAME SIZE AND TYPE.
COPPER RANGE: 0.91-1.15mm [#19-#17] AWG.
- 2 SPECIAL CAVITY ANVIL LOCATION REQUIRED
4.83±0.07 [.190±.003]. REF APPLICATION SPEC 114-2046, SEC. 3.2, NOTE 7. REVISION T OR LATER.
- 3 ORANGE COLORING APPLIED TO THIS SURFACE DURING LOOSE PIECE OPERATION TO PROVIDE COLOR CODING OF MAGNET WIRE RANGE.



1742240-1
PART NUMBER

THIS DRAWING IS A CONTROLLED DOCUMENT.		DWN MICHAEL S. FEHER 17FEB2005																				
DIMENSIONS: INCHES		CHK KURT A. RANDOLPH 17FEB2005																				
TOLERANCES UNLESS OTHERWISE SPECIFIED:		APVD KURT A. RANDOLPH 17FEB2005	NAME TERMINAL, SPLICE, LOOSE PIECE, 300 SERIES MAG-MATE																			
<table border="0"> <tr><td>0 PLC</td><td>±</td><td>-</td></tr> <tr><td>1 PLC</td><td>±</td><td>-</td></tr> <tr><td>2 PLC</td><td>±</td><td>0.25 [.010]</td></tr> <tr><td>3 PLC</td><td>±</td><td>-</td></tr> <tr><td>4 PLC</td><td>±</td><td>-</td></tr> <tr><td>ANGLES</td><td>±</td><td>-</td></tr> </table>		0 PLC	±	-	1 PLC	±	-	2 PLC	±	0.25 [.010]	3 PLC	±	-	4 PLC	±	-	ANGLES	±	-	PRODUCT SPEC 108-2012	SIZE A2	CAGE CODE 00779
0 PLC	±	-																				
1 PLC	±	-																				
2 PLC	±	0.25 [.010]																				
3 PLC	±	-																				
4 PLC	±	-																				
ANGLES	±	-																				
MATERIAL 4M BRASS	FINISH 0.002032 [.000080] MIN TIN PLATE	APPLIC. SPEC 114-2046 2	DRAWING NO C=1742240	RESTRICTED TO -																		
CUSTOMER DRAWING		WEIGHT 0.000000	SCALE 10:1	SHEET 1 OF 1																		
		REV B1																				