



# Customer Product/Process Change Notification

PCN # TPC13120501\_OPCMIDIF

Issued Date: 12/16/2013

Issued By: Dave Weimer

Author: DW

Change affects whole product family? NO

Part #'s affected (See attached if entire product family is affected)

OPC11MDIF, OPXP1MDIF AND OPXC1MED

**Description of Change:**

Obsoleting OPC11MDIF and to be replaced with OPXC1MED  
Obsoleting OPXP1MDIF and to be replaced with OPXC1MED

**Reason for Change:**

New Optic that is compatible with Rebel ES, Rebel LXLM, Cree XPG, Cree XTE and Nichia 219B.

**Properties of Old vs. Changed Product:**

Optical Output:  
MDIF Rebel = 10° (Half Divergence) Rebel  
Medium Universal = see page 2 for Full Divergence details  
see page 2 for visual and dimensional changes (Universal Optics is taller and smaller in dia.)

**Disposition of Old Product:**

Deplete existng inventory

Expected Implementation Date: March 1,2014

Customer Feedback Expected by: N/R

**Additional Comments: (Include Potential Risks if Appropriate)**

**Supporting Qualification Data:**

**Approved By:**

(Minimum of three approvals are required.)

Vice President of Operations: \_\_\_\_\_

Vice President of Sales OED/Signals: \_\_\_\_\_

Director of Customer Service: Kathy Smith

Applications Engineer: Dave Weimer

Director of Quality: Rich Liskoff

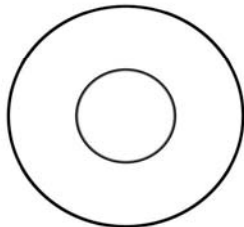


OPC11MDIF and  
OPXP1MDIF  
TIR MDIF - Rebel

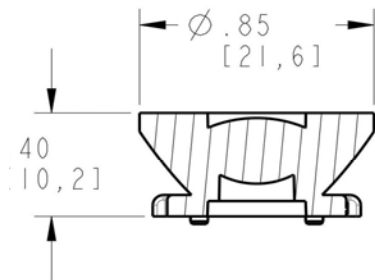
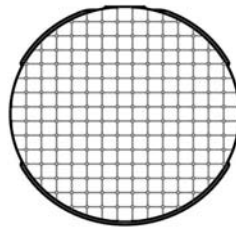
OPXC1MED  
TIR Medium- Universal

**OPC11MDIF  
Rebel**

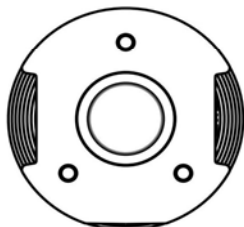
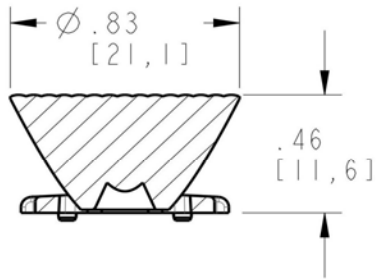
**OPXC1MED  
Universal**



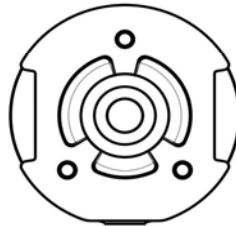
**TOP  
VIEW**



**FRONT  
VIEW  
(SECTIONED)**

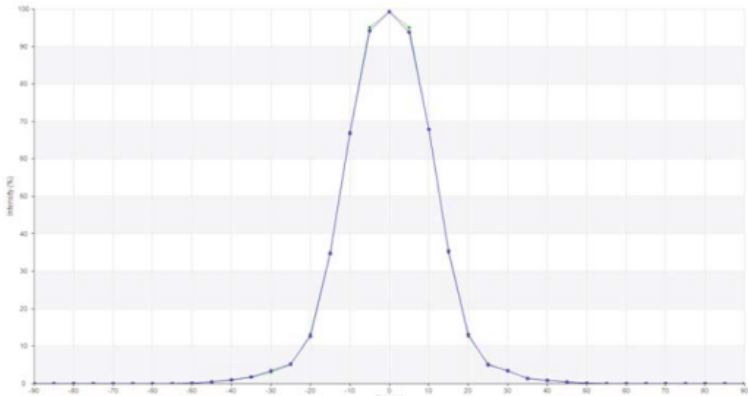


**BOTTOM VIEW**  
THE SIZE AND  
LOCATION OF  
THE 3 PINS  
ARE THE SAME



OPC11MDIF OPXP1MDIF
Rebel = 10°
the above angle is referred to half divergence

**OPXC1MED**



The typical full-width at half-maximum emission angle

- 23° (+/- 12.5 degree) for Cree XPG
- 24° (+/- 12 degree) for Cree XTE
- 24° (+/- 12 degree) for Luxeon rebel ES
- 27° (+/- 13.5 degree) for Luxeon rebel XLXM
- 24° (+/- 12 degree) for Nichia 219B