

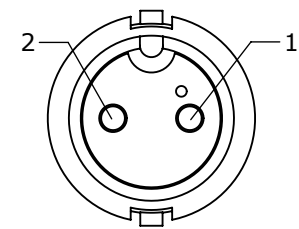
CUSTOMER PRINT

PART NUMBER: 6280-XPG-3XXW

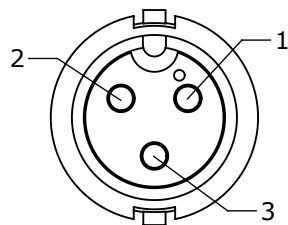
NOTES:
 1. ALL PARTS TO BE BULK PACKED.
 2. ALL DIMENSIONS ARE REFERENCE ONLY.

ASSY P/N	GROMMET SIZE
6280-XPG-3DCW	DAISY CHAIN
6280-XPG-311W	CABLE O.D. .09-.14
6280-XPG-315W	CABLE O.D. .15-.17
6280-XPG-318W	CABLE O.D. .18-.20
6280-XPG-321W	CABLE O.D. .21-.23

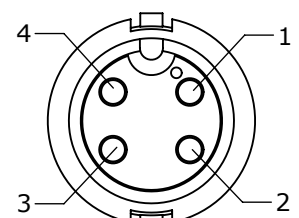
ASSY P/N	NO. OF CONTACTS	GROMMET SIZE
6280-2PG-3XXW	2 #20	DAISY CHAIN
6280-3PG-3XXW	3 #20	CABLE O.D. .09-.14
6280-4PG-3XXW	4 #20	CABLE O.D. .15-.17
6280-5PG-3XXW	5 #20	CABLE O.D. .18-.20
6280-6PG-3XXW	6 #20	CABLE O.D. .21-.23
6280-XPG-3XXW		



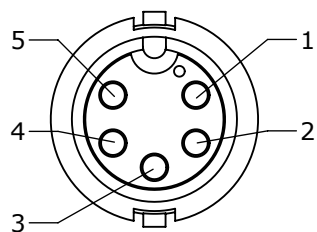
FACE VIEW
6280-2PG-3XXW



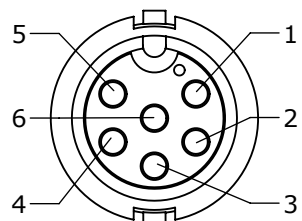
FACE VIEW
6280-3PG-3XXW



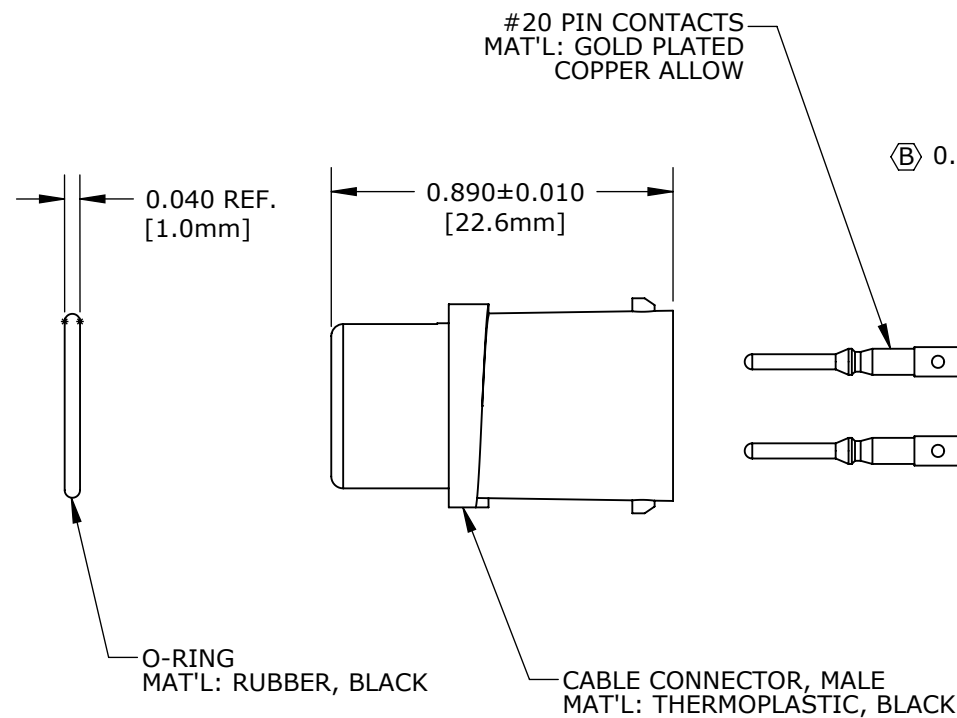
FACE VIEW
6280-4PG-3XXW



FACE VIEW
6280-5PG-3XXW



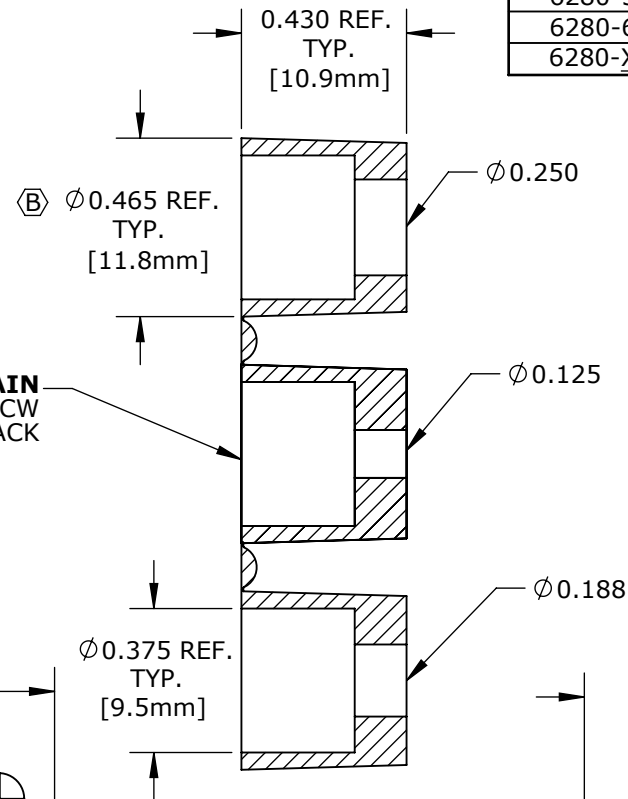
FACE VIEW
6280-6PG-3XXW



GROMMET, DAISY CHAIN
 FOR 6280-XPG-3DCW
 MAT'L: RUBBER, BLACK

Ø 0.434±0.010 [11.0mm]

WINGED COUPLING RING
MAT'L: THERMOPLASTIC, BLACK



SINGLE GROMMET
 MAT'L: SANTOPRENE, BLACK
 6280-XPG-311W (.125 I.D. FOR CABLES .09-.14 O.D.)
 6280-XPG-315W (.188 I.D. FOR CABLES .15-.17 O.D.)
 6280-XPG-318W (.156 I.D. FOR CABLES .18-.20 O.D.)
 6280-XPG-321W (.225 I.D. FOR CABLES .21-.23 O.D.)

GROMMET SIZE FOR SINGLE GROMMET OR "DC" FOR DAISY CHAIN

NO. OF CONTACTS

0.688±0.015 [17.5mm]

BACKSHELL
MAT'L: THERMOPLASTIC, BLACK

DIMENSIONS IN BRACKET [] ARE METRIC.

CUSTOMER APPROVAL

THIS DOCUMENT CONTAINS CONFIDENTIAL INFORMATION PROPRIETARY TO CONXALL CORPORATION. ANY REPRODUCTION, DISCLOSURE, OR USE OF THIS DOCUMENT / INFORMATION IS EXPRESSLY PROHIBITED UNLESS AUTHORIZED IN WRITING BY CONXALL CORPORATION.

APPROVED BY: _____

DATE: _____

B	AN	10-10-13	GROMMET O.D. 0.465 WAS 0.475, COUPLING RING DIM. 0.434 WAS 0.442, ADDED TOLERANCES AND MATERIALS. PER ECR 8561
A	AN	02-11-10	DRAWING CREATED PER DOR 10-E149SL
REV.	INIT.	DATE	DESCRIPTION
	AN	02-11-10	ORIG. DRAWN BY: DATE: 02-11-10
ALL INFORMATION ILLUSTRATED IS THE PROPERTY OF CONXALL CORPORATION. UNAUTHORIZED DUPLICATION OR DISTRIBUTION OF THIS DOCUMENT IS PROHIBITED.			<p>601 E. WILDWOOD VILLA PARK, IL 60181</p>
ALL UNITS ARE IN FEET, INCHES, FRACTION OF INCHES AND DECIMALS. UNLESS OTHERWISE SPECIFIED TOLERANCES: 3 PLACE DECIMALS ±.005 ANGLES ±1° FRACTIONS ±1/16			
APPROVED BY:		SCALE	TITLE: CONNECTOR ASSEMBLY KIT (2-6) #20 PIN CONTACTS MINI-CON-X
		SIZE	CUSTOMER: STANDARD PRODUCT
		SHEET	PART NUMBER: 6280-XPG-3XXW
		1 OF 1	REV B
FILE: 6280-XPG-3XXW		DIRECTORY: SLW	